



# INSTALLATION GUIDE

SIMBOOTH KIT 1

SimBooth Safety Notice .....	3
IDRA II Safety Notice .....	4
PC Specifications .....	5
Parts List .....	6-7
Structure assembly .....	8-10
Floor assembly .....	11-12
IDRA II installation .....	13
Projector installation .....	13-14
Cables connection .....	15-16
GolfIn Launcher & IDRA II calibration .....	17
Appendix A (projector placement) .....	18
Appendix B (AH30ST adjustments with a monitor) .....	19-23
Appendix C (AH30ST adjustments without a monitor) ...	24-28



**WARNING**

**PLEASE READ THE FOLLOWING BEFORE USE.**

**FAILURE TO FOLLOW THE INSTRUCTIONS COULD RESULT IN SERIOUS INJURY, PROPERTY DAMAGE, AND/OR VOID THE DEVICE WARRANTY.**

- NEVER lift, move, or raise the structure if the impact screen is not installed and secured. The impact screen plays a critical structural stabilization role. Lifting or handling the structure without the screen installed may cause the frame to become unstable, tip, or collapse. This may result in serious injury, death, or severe property damage.
- SimBooth structures are designed exclusively for indoor golf simulation. Do not use the structure for storage, climbing, or for hanging objects.
- Install only on a flat and stable floor capable of supporting the total weight of the structure. Assembly must be performed by a minimum of four (4) people.
- Ensure all bolts, screws, and panels are correctly tightened before use. Loose or missing components may cause instability or structural collapse.
- Do not remove or modify the impact screen during normal operation. The screen is essential to absorb golf ball impacts and help prevent injuries.
- Keep children and pets away from the hitting area. Always remain aware of your surroundings and use caution while swinging.
- Do not modify the structure or add any additional weight to the frame or ceiling area.
- Indoor use only. Do not expose the structure to outdoor conditions, excessive humidity, water infiltration, or direct sunlight. Recommended operating conditions: Temperature: 10°C to 35°C (50°F to 95°F) Humidity: 30% to 65%
- Verify that the ceiling height and room dimensions meet the requirements of your specific SimBooth model before installation.
- Inspect the structure regularly to detect: Loose hardware, Worn impact screen, Damaged panels, etc. Replace worn or damaged components as needed.
- Always follow official SimBooth installation instructions. Improper assembly may compromise safety and void the warranty.

**WARNING**

**PLEASE READ THE FOLLOWING BEFORE USE.**

**FAILURE TO FOLLOW THE INSTRUCTIONS COULD RESULT IN SERIOUS INJURY, PROPERTY DAMAGE, AND/OR VOID THE DEVICE WARRANTY.**

- Before installing IDRA II, ensure the ceiling structure is capable of supporting a minimum of 20 lbs (9 kg). If the installation area is not sufficiently strong, it must be reinforced before installation. Failure to install on a secure structure may cause the launch monitor to fall, resulting in serious injury or equipment damage.
- The IDRA II mounting plate is specifically designed to secure an IDRA II launch monitor to the ceiling. **DO NOT** attach additional equipment or objects to the supplied bracket. Additional weight may cause damage or structural failure.
- Install IDRA II on a flat and stable surface only. Failure to do so may result in the launch monitor falling and causing injury.
- Do not attempt to disassemble, repair, or modify IDRA II. This may result in fire, electric shock, injury, or equipment damage. Contact support if issues occur.
- Ensure the hitting area is not directly exposed to sunlight, as this may negatively affect tracking performance.
- Always remain aware of your surroundings and play with caution.
- Do not install or operate IDRA II outdoors. This device is designed exclusively for indoor use.
- Do not install IDRA II where operating temperatures may be exceeded. Recommended operating temperature: 16°C to 30°C (61°F – 86°F) Excessive heat may damage the launch monitor.
- Install IDRA II away from excessive dust or humidity to prevent lens contamination and optical issues. Recommended humidity range: 30% to 65%
- Avoid touching the LED light to prevent burns. do not look directly into the LED light to avoid possible eye damage.

### PC SPECIFICATIONS WITH GSPRO

Requirement	Minimum	Recommended
Processor	Intel Core i7, 10th Gen, with at least 16 logical processors	<b>Intel Core i7, 10th Gen or newer, with at least 24 logical processors</b>
Storage	512 GB	<b>1 TB</b>
GPU	Nvidia GeForce RTX 20 series	<b>Nvidia GeForce RTX 40 series or newer</b>
RAM memory	16 GB	<b>32 GB</b>
USB Ports	2 USB 3.0 & 1 USB-C ports are required	
Internet	High-speed Internet is required	

### PC SPECIFICATIONS WITH E6 CONNECT

Requirement	Minimum	Recommended
Processor	Intel Core i7, 10th Gen or newer, with at least 16 logical processors	
Storage	512 GB	
GPU	Nvidia GeForce RTX 20 series	<b>Nvidia GeForce RTX 30 series or newer</b>
RAM memory	16 GB	
USB Ports	2 USB 3.0 & 1 USB-C ports are required	
Internet	High-speed Internet is required	



**AMD PROCESSORS & GPUS ARE NOT SUPPORTED.**

**DO NOT USE USB CABLE EXTENSION BETWEEN YOUR PC AND YOUR IDRA II.**

### WALL PANELS

LEFT WALLS



LEFT TOP WALL

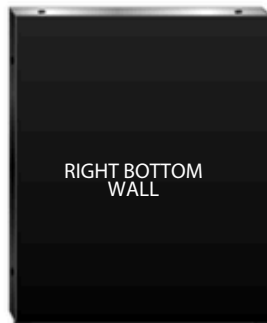


LEFT BOTTOM WALL

RIGHT WALLS

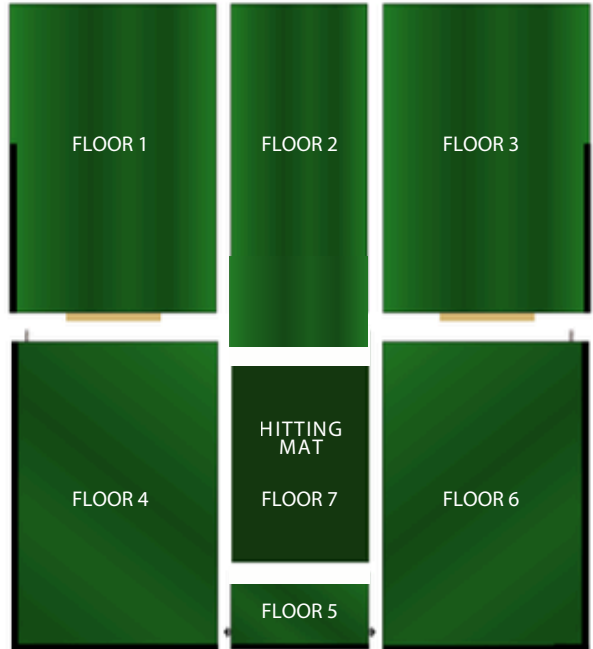


RIGHT TOP WALL



RIGHT BOTTOM WALL

### FLOOR PANELS



### CEILING PANELS



LEFT CEILING



MIDDLE CEILING



RIGHT CEILING

**ACCESSOIRES**

Bolt-01 (2x)



Washer (28x)



Wing nut (3x)



Nut (28x)



Bolt-04 (2x)



Allen Key



Bolt-02 (2x)



Bolt-03 (4x)



Elevating bracket



Tees (10x)



Remote & Projector



Black impact screen



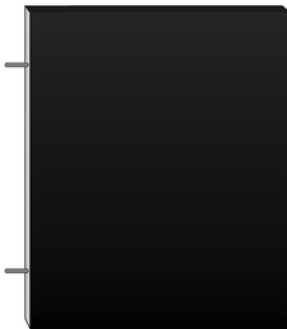
White projection screen



Scissor bar



Half wall (2x)



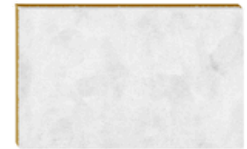
Projector beam



Hitting mat



Shim 1/2"



Wire cover



Shim 1/8"



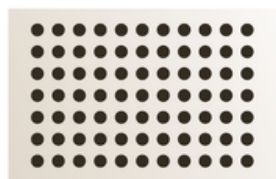
**LAUNCH MONITOR**

IDRA II AI launch monitor



With power cable and two  
USB camera cables (1x)

Calibration board (1x)



Nuts + Washers  
(2x)



USB Hub (1x)



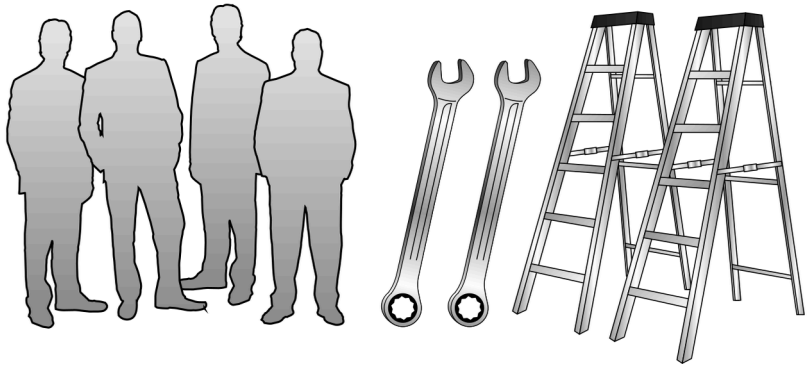
Wireless remotely  
operated switch (1x)  
(Only included in North America)



For illustration purposes only. Model may vary.

**BEFORE STARTING**

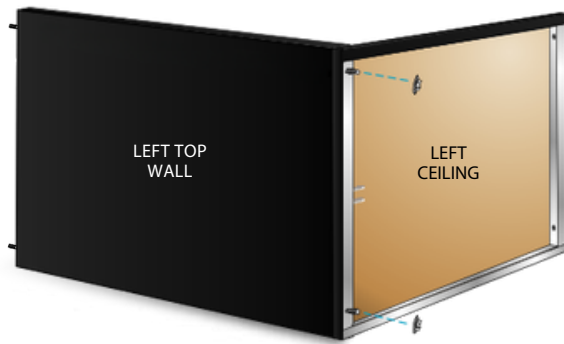
You will need 4 people, two ladders, and two 1/2" (13 mm) wrenches.



**1**

Attach the left top wall to the left ceiling with washers & nuts.

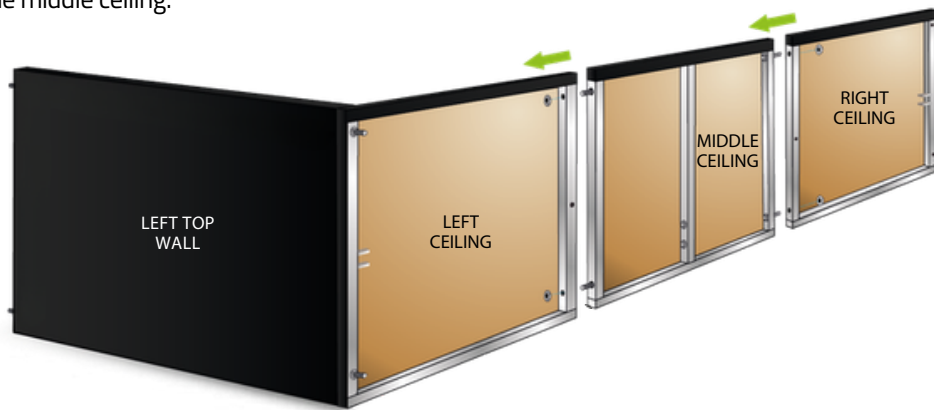
2x Washers  
2x Nuts



**2**

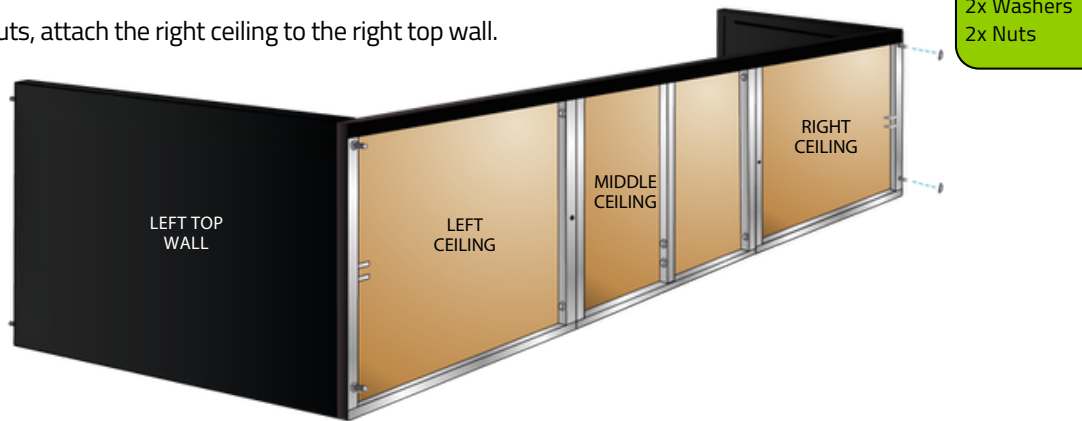
Using washers and nuts, attach the middle ceiling to the left ceiling, then attach the right ceiling to the middle ceiling.

4x Washers  
4x Nuts



3

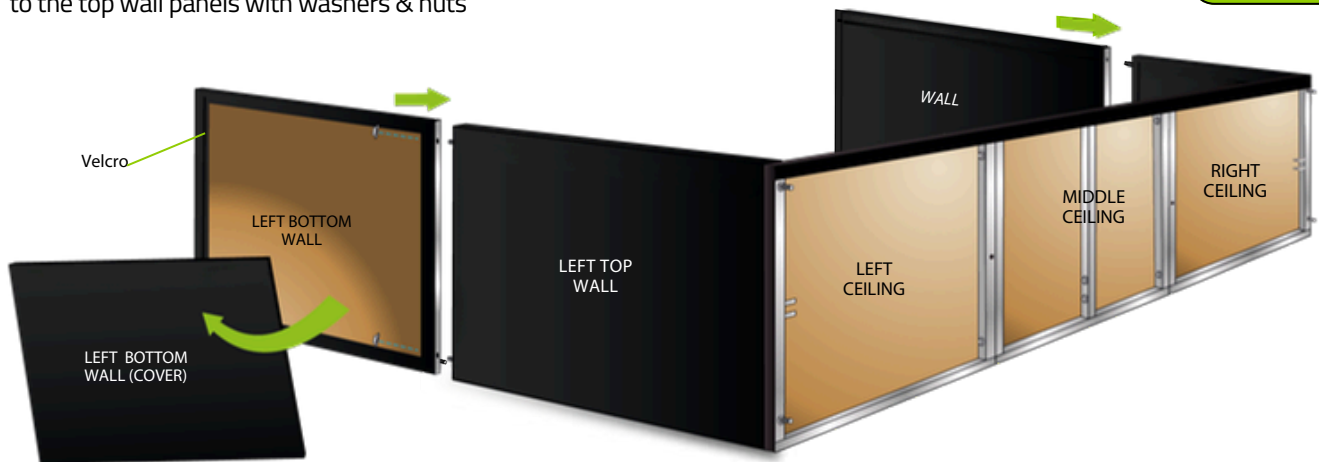
Using washers and nuts, attach the right ceiling to the right top wall.



2x Washers  
2x Nuts

4

Remove the bottom wall covers, then attach the bottom wall panels to the top wall panels with washers & nuts

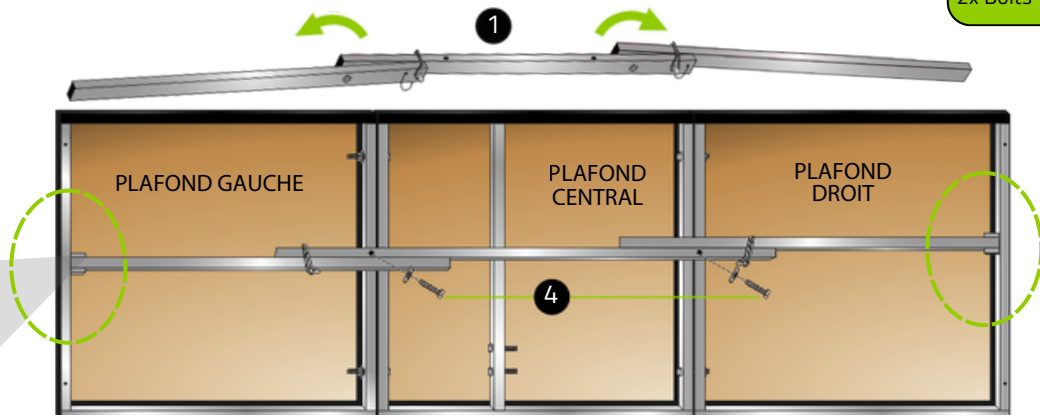
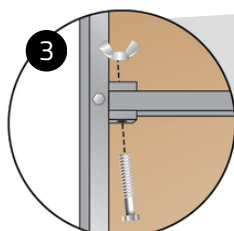
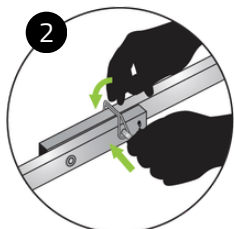


4x Washers  
4x Nuts

5

(1) Unfold the scissor bar (2) and secure it with the safety pins. (3) Attach the scissor bar to both ends of the structure using wing nuts and bolts-02. (4) Attach the scissor bar to the center of the structure using washers and bolts-01.

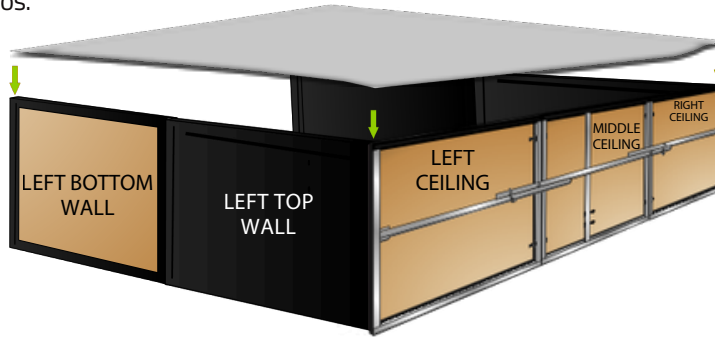
2x Washers  
2x Wing Nuts  
2x Bolts-01  
2x Bolts-02



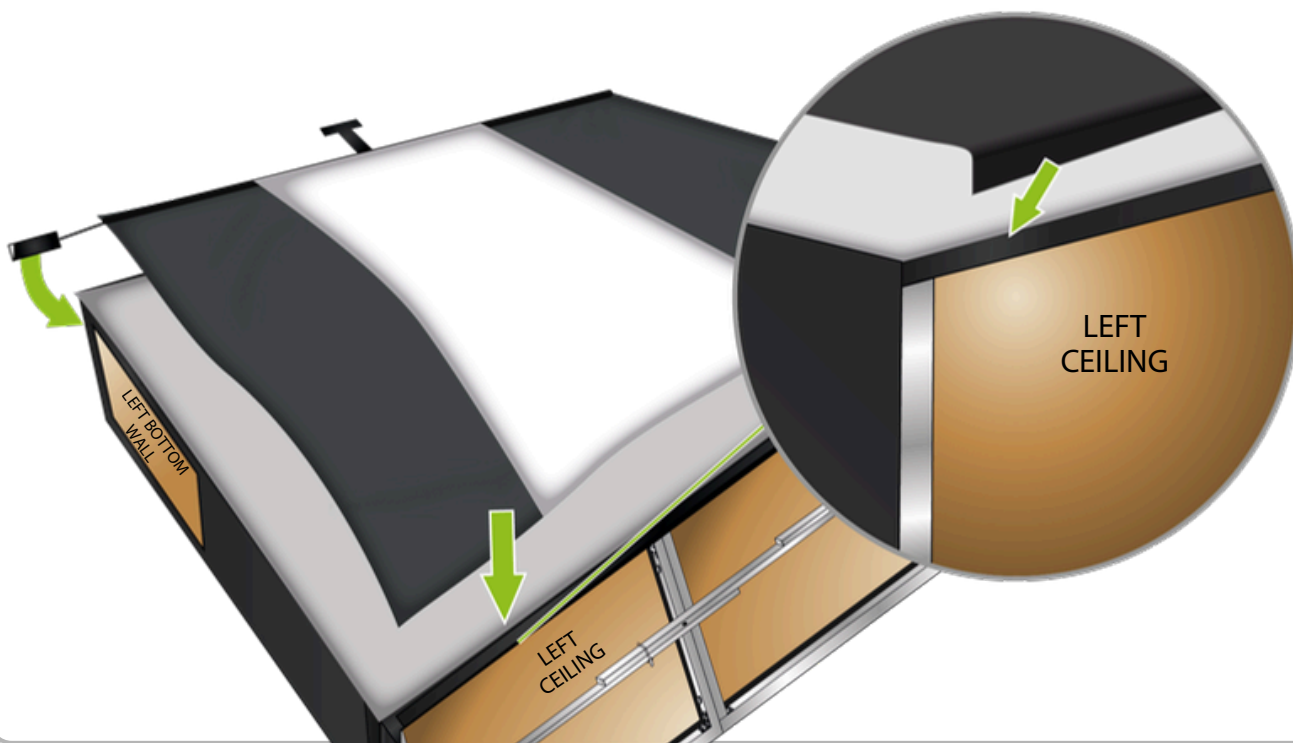
**IT IS IMPORTANT TO COMPLETE THIS STEP BEFORE LIFTING THE STRUCTURE.**

**6**

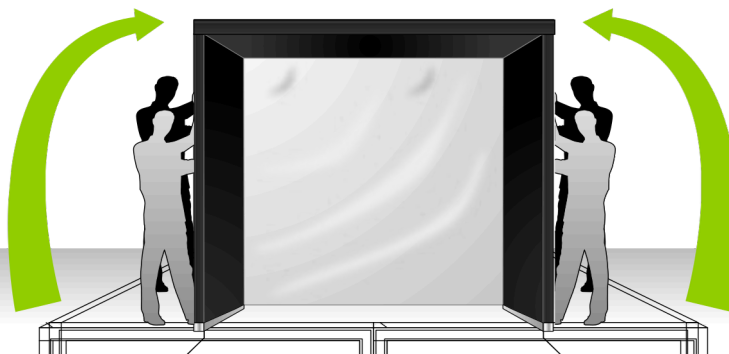
Attach the white projection screen to the structure using the velcros.

**7**

Attach the black impact screen over the white projection screen using the velcros. Make sure it is attached to the top velcros on the ceiling panels and that the bottom doesn't rest on the floor.

**8**

Lift the structure with 4 people.

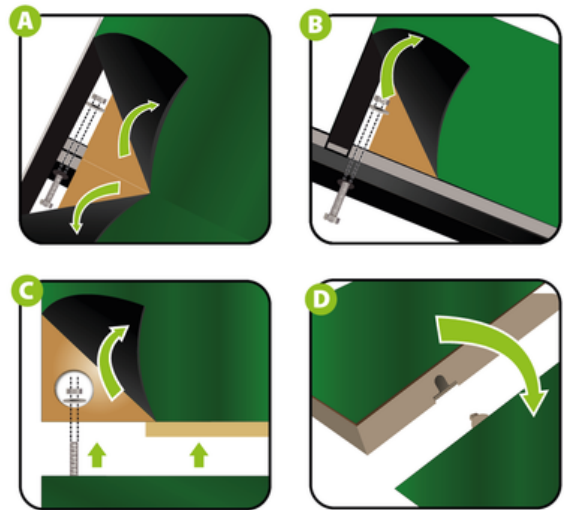
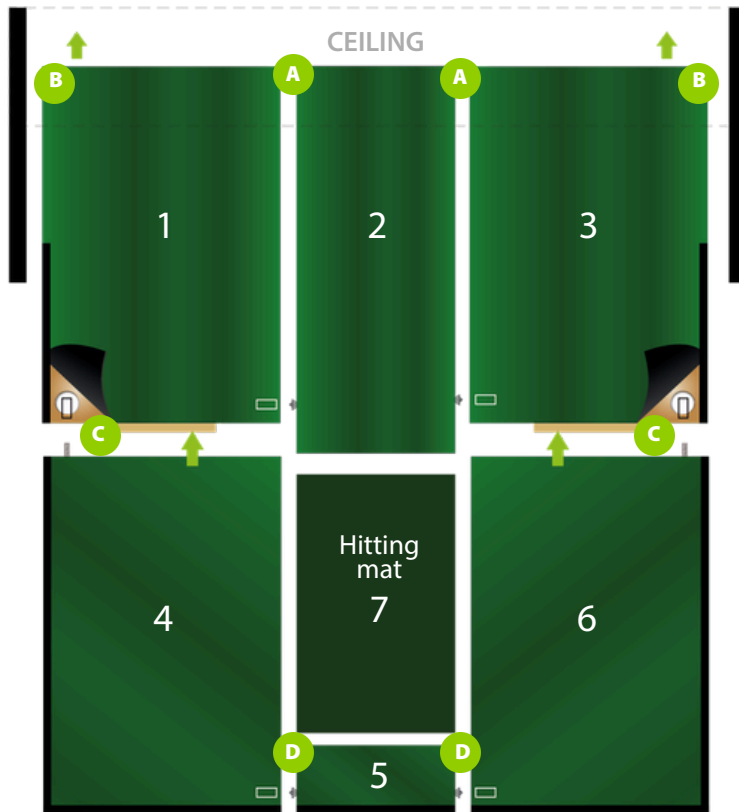
**WARNING**

Never lift or raise the structure if the white projection screen is not installed. The structure may tip or fall and cause serious injury.

1

Assemble the floor sections in order (1 to 7). For A and B, you will need bolts-03, washers, and nuts. For C, you will need washers and nuts. Use the shim to adjust the height of the hitting mat.

- 6x Washers
- 6x Nuts
- 4x Bolts-03



2

**Step 1**

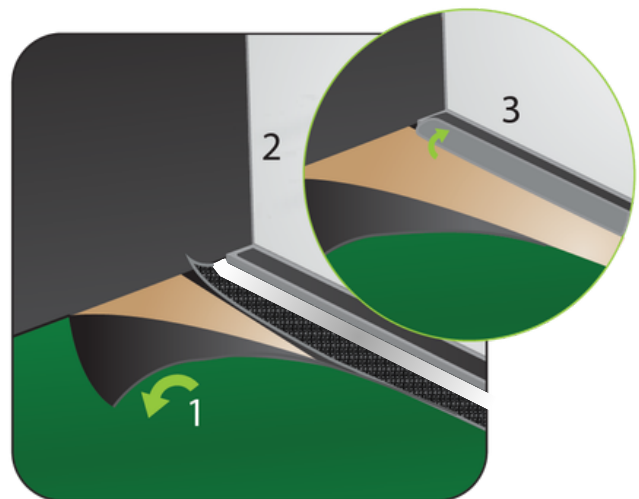
Lift green carpet.

**Step 2**

Stretch the white projection screen behind and under the aluminum bar and reach for it through the space.

**Step 3**

Attach it on the first half of the velcro on the aluminum bar.



3

**Step 1**

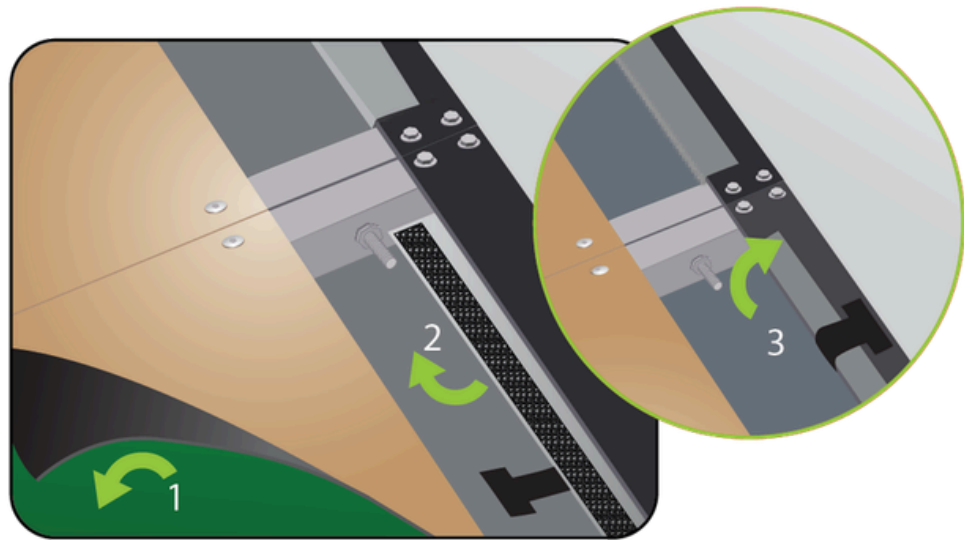
Lift green carpet.

**Step 2**

Stretch the black impact screen behind and under the aluminum bar and reach for it through the space.

**Step 3**

Attach the T on the remaining half.



END OF STRUCTURE FLOOR INSTALLATION SECTION

**HALF WALLS INSTALLATION**

4x Washers  
4x Nuts

Simply cut through the black carpet to access the pre-drill holes and insert the half-walls. Fix the half-walls to the structure with washers and nuts. Then, fix the removable panel on the bottom walls with the velcro.



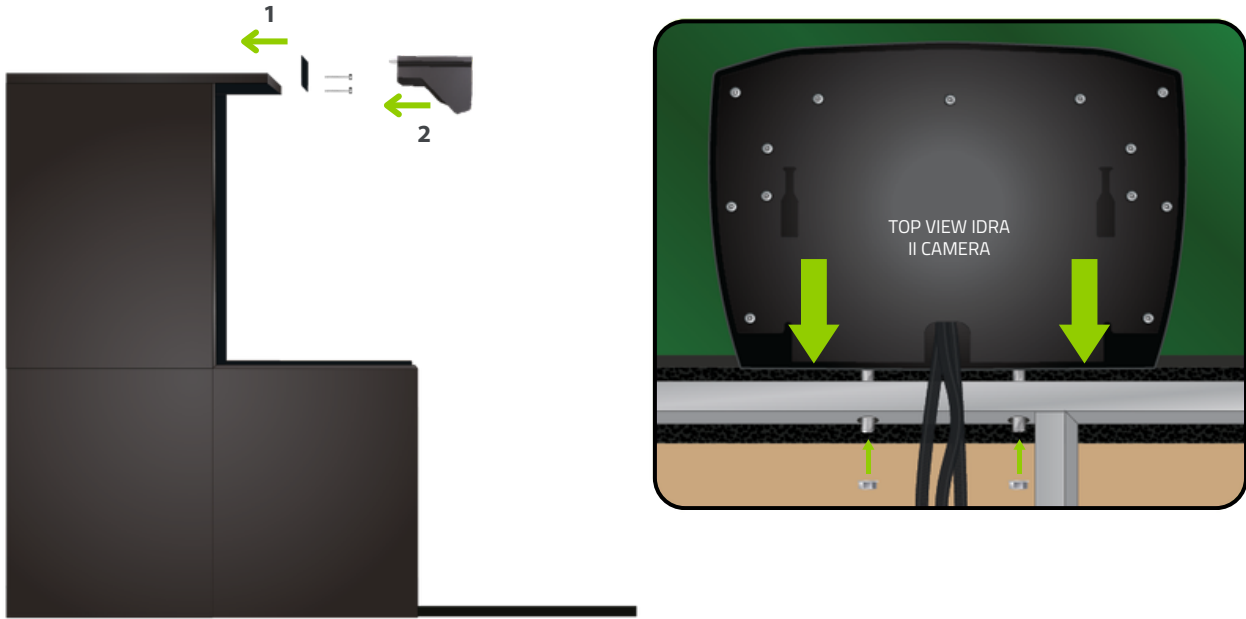
1

### IDRA II INSTALLATION

Climb on a ladder and attach the IDRA II camera through the holes that are located at the center the structure. Then, secure it tightly with washers and nuts on the other side.

- 2x Washers
- 2x Nuts
- 2x Bolts-04

**\*To be able to achieve a full-screen projection, you must install your IDRA II on the elevating bracket. Using the Allen key, attach the mount through the holes located at the front of the central ceiling using bolt-04, washers, and nuts. Finally, secure the IDRA II onto it.**

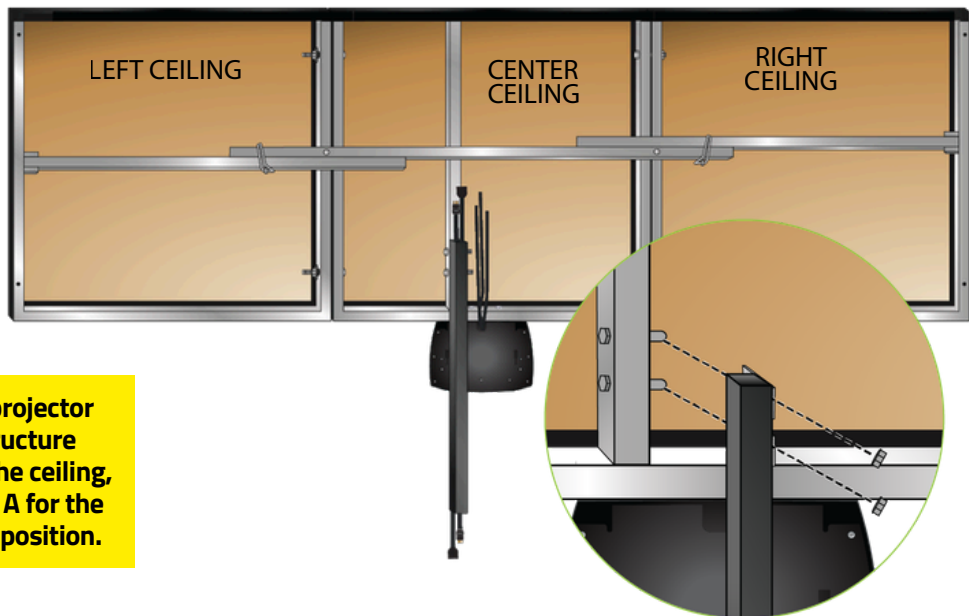


2

### PROJECTOR BEAM INSTALLATION

Attach the projector beam to the ceiling structure with washers and nuts.

- 2x Washers
- 2x Nuts

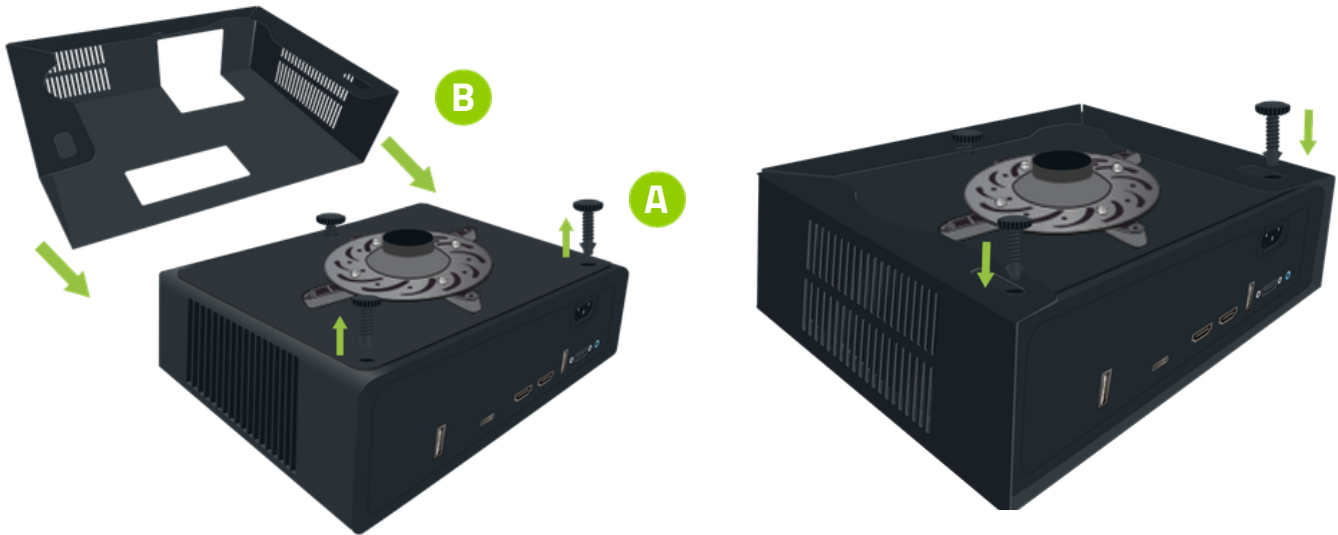


**If you are not using the projector beam attached to the structure and plan to install it on the ceiling, please refer to Appendix A for the recommended projector position.**

3

### PROJECTOR ENCLOSURE INSTALLATION (OPTIONAL)

**(A)** To install the projector enclosure, first remove the rear adjuster feet of the projector completely, and slightly loosen the front adjustable foot without removing it. **(B)** Next, insert the projector into the enclosure, making sure the lens is properly aligned with the designated opening. **(C)** Finally, reinstall the removed adjustable feet through the holes of the enclosure to secure the projector in place, and re-tighten the front adjustable foot.



4

### PROJECTOR INSTALLATION

Attach the projector on the projector mount. Refer to the instruction sheet inside the projector box.



### IDRA CABLE CONNECTIONS

Connect the power cable (country-specific) to the wireless remote switch. Then, plug the wireless remote switch into your electrical outlet. Connect one of the two USB camera cables to the USB 3.0 SS port on your PC and the other to the hub. Plug the hub into the USB-C port on your PC. Make sure the USB cables are not bend or under tension.



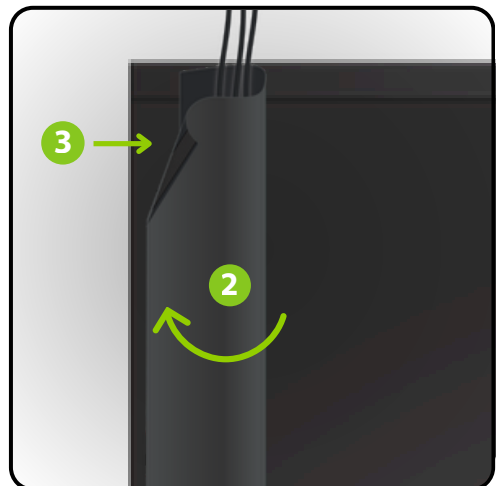
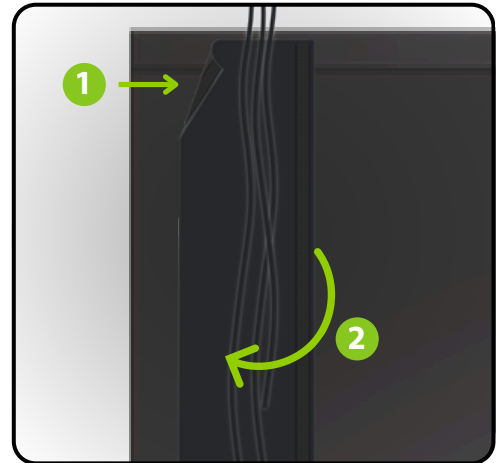
### PROJECTOR CABLE CONNECTIONS

Plug the HDMI cable to the HDMI port on your projector and on your PC. Connect the power cable to the ground terminal and your electrical outlet. **Refer to Appendix B, C, D or E for your projector adjustments.**



## WIRE COVER

Stick one side of the wire cover to the structure using the Velcro. Gather your wires inside the wire cover and, forming a loop over the wires, stick the second side of the wire cover just in front of your first Velcro.



## GOLFIN LAUNCHER INSTALLATION AND IDRA II CALIBRATION

**Follow these steps to complete your installation:**

### STEP 1

Ensure your simulator computer (PC) is connected to the Internet.

### STEP 2

From the computer (PC) you use for your simulator, consult our websites resources page to download the Golfln Launcher: <https://www.golfinsim.com/resources/>

### STEP 3

Once the Golfln Launcher is downloaded onto your computer (PC) click on finish,

### STEP 4

A window will open automatically click on Continue. Follow the on-screen instructions to complete the calibration.

### STEP 5

Once calibration completed, the Golfln Launcher main menu will open. Select GSPro & enter your product key (You can find your key in the Welcome & Important Information - SimBooth Kit email we sent you).

### STEP 6

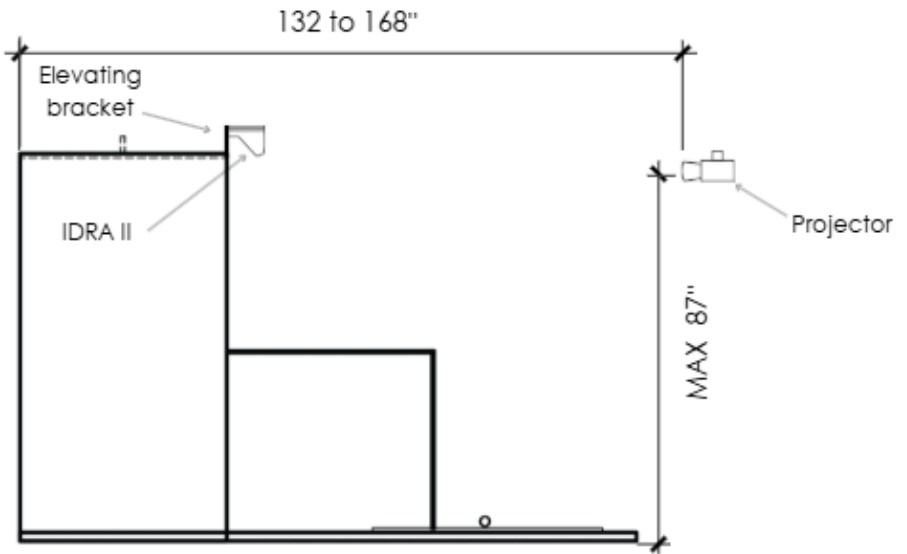
Enjoy your IDRA II !

**PROJECTOR PLACEMENT WHEN NOT USING THE PROJECTOR BEAM**

Minimum projector distance:  
132" (335.3 cm)  
Screen to lens

Maximum projector distance:  
168" (426.7 cm)  
Screen to lens

Projector Height:  
87" (221 cm)  
Floor to the middle of the lens



# BENQ AH30ST PROJECTOR AJUSTEMENTS WITH MONITOR

## TABLE OF CONTENTS

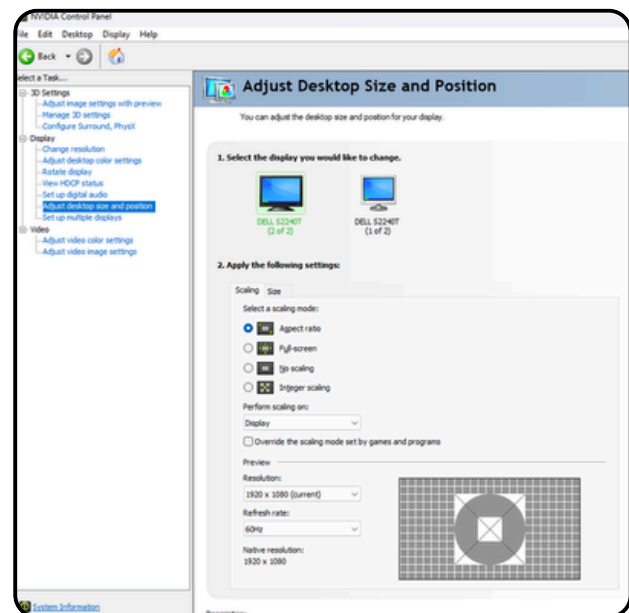
- |                                   |                          |
|-----------------------------------|--------------------------|
| 1. Select the correct HDMI Source | 4. Projector Settings    |
| 2. NVIDIA Control Panel (PC)      | 5. Projector Ajustements |
| 3. Windows Display Settings (PC)  |                          |

## 1. SELECT THE CORRECT HDMI SOURCE

1. Turn on the projector and press the 'Source' button on the remote control.
2. Use the arrows to navigate to the appropriate HDMI input (HDMI 1 or HDMI 2) and press 'OK' to select.

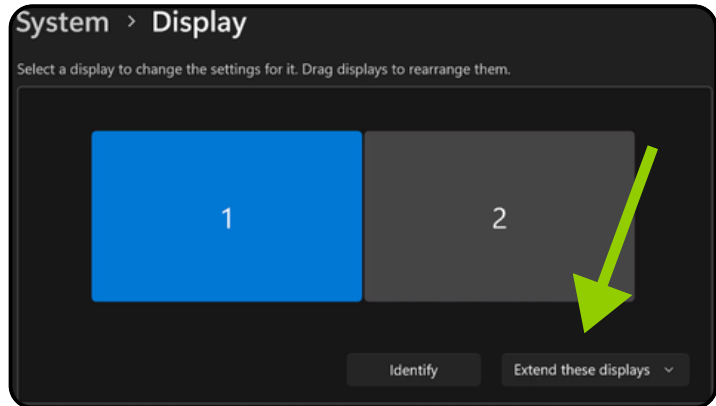
## 2. WINDOWS DISPLAY SETTINGS (PC)

1. Open the NVIDIA Control Panel & make sure the projector is turned on.
2. Click on "Adjust desktop size and position"
3. Select your monitor
4. Select "Aspect ratio"
5. Keep the resolution at 1920 x 1080
6. Select your projector
7. Select "Aspect ratio"
8. Keep the resolution at 1920 x 1080
9. Click "Apply" at the bottom right of the screen. Then "Yes" to "Apply Changes"



### 3. WINDOWS DISPLAY SETTINGS (PC)

1. Click Start > Settings
2. Go to System > Display
3. If both screens are detected, you will see two numbered rectangles (1 and 2)
4. Click on Extend these Display (menu below and to the right of the 2 screens)
5. Select "Duplicate these displays"
6. Click "Keep Change"
7. Make sure the display resolution is set to 1920 x 1080



### 4. PROJECTOR SETTINGS

1. Language: Select the desired language
2. Menu (On the remote) : Menu Type > Choose Advanced
3. Picture > Picture Mode: Select Golf



## 4. PROJECTOR SETTINGS (CONTINUED)

4. Display > Screen Fill: Choose 16:9 (1920 x 1080)



5. Display > Aspect Ratio : Select 16:10



## 5. PROJECTOR AJUSTEMENTS

Each environment is unique, so this section may require a bit more time and patience. Depending on your setup (screen size, projector distance, ceiling height, etc.), the adjustments needed can vary significantly from one user to another.

Take the time to explore and combine the different adjustments below to achieve an image perfectly suited to your installation. Don't hesitate to repeat the process multiple times to fine-tune the result to your preferences.

- Zoom: Adjust the image size using the zoom dial under the lens



- Display > Image Resizing: Use Digital Shrink & Shift → Adjust the image so that it slightly exceeds the desired size on all sides

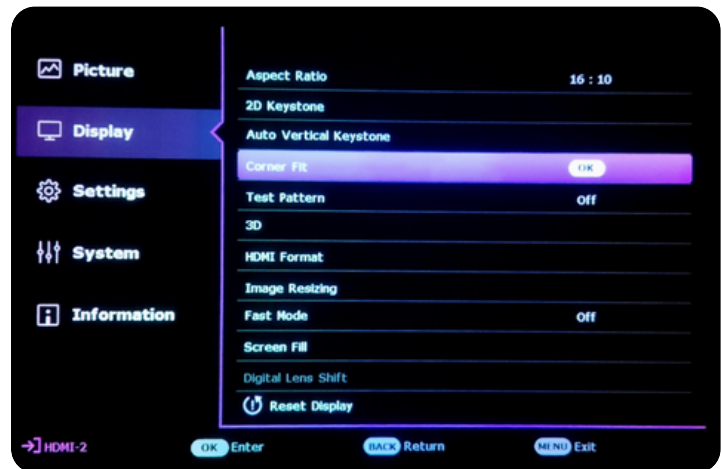


## 5. PROJECTOR AJUSTEMENTS (CONTINUED)

- Display > 2D Keystone: Correct vertical tilt and horizontal shift of the image



- Display > Corner Fit: Fine-tune the image size and position for precise alignment



- Focus: Adjust image sharpness using the focus dial under the lens



# BENQ AH30ST PROJECTOR AJUSTEMENTS **WITHOUT MONITOR**

## TABLE OF CONTENTS

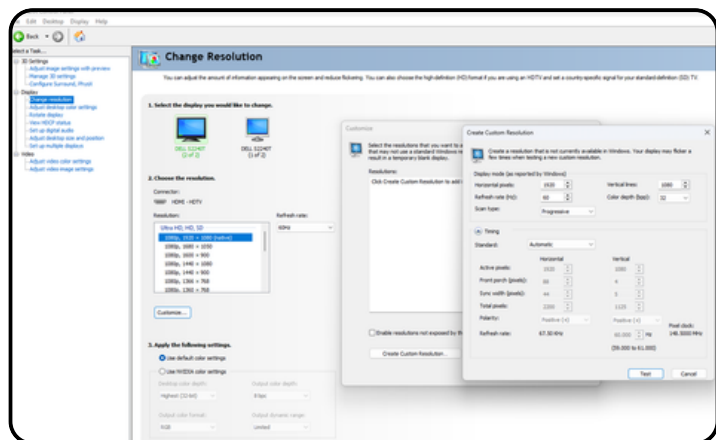
- |                                   |                          |
|-----------------------------------|--------------------------|
| 1. Select the correct HDMI Source | 4. Projector Settings    |
| 2. NVIDIA Control Panel (PC)      | 5. Projector Ajustements |
| 3. Windows Display Settings (PC)  |                          |

## 1. SELECT THE CORRECT HDMI SOURCE

1. Turn on the projector and press the 'Source' button on the remote control.
2. Use the arrows to navigate to the appropriate HDMI input (HDMI 1 or HDMI 2) and press 'OK' to select.

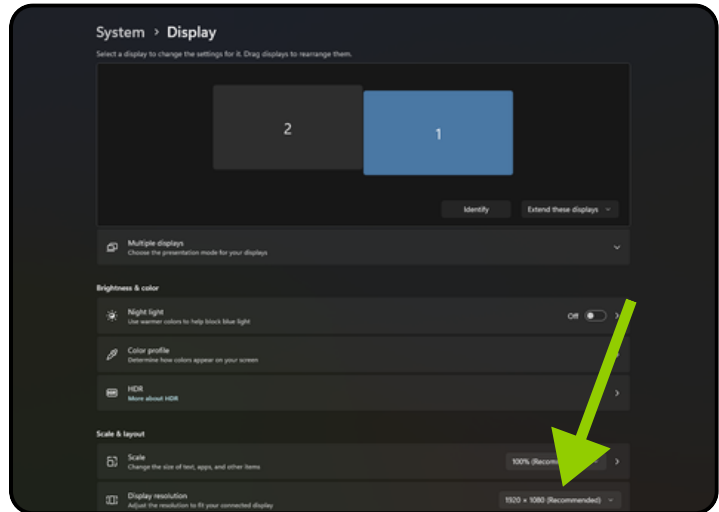
## 2. WINDOWS DISPLAY SETTINGS (PC)

1. Open the NVIDIA Control Panel
2. Click on Change resolution:
  - Customise > Create custom resolution
3. Under Display mode (as reported by Windows), Change :
  - Horizontal pixels to 1547
  - Vertical Lines to 1080
4. Click on Test > Apply change > Yes
5. Click on Adjust desktop size and position:
6. Select "Aspect ratio" (The projector must be turned on beforehand)
7. Change the Resolution to 1547 × 1080
8. Click "Apply" at the bottom right of the screen. Then "Yes" to "Apply Changes"



### 3. WINDOWS DISPLAY SETTINGS (PC)

1. Click Start > Settings
2. Go to System > Display
3. Make sure the display resolution is set to 1547 × 1080
4. If not, change it & Click "Yes" to Keep these display setting



### 4. PROJECTOR SETTINGS

1. Language: Select the desired language
2. Menu (On the remote) : Menu Type > Choose Advanced
3. Picture > Picture Mode: Select Golf

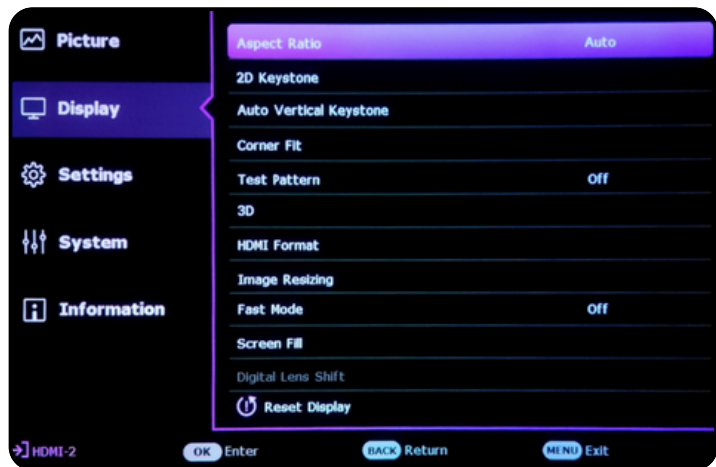


## 4. PROJECTOR SETTINGS (CONTINUED)

4. Display > Screen Fill: Choose 16:9 (1920 x 1080)



5. Display > Aspect Ratio : Select "Auto"

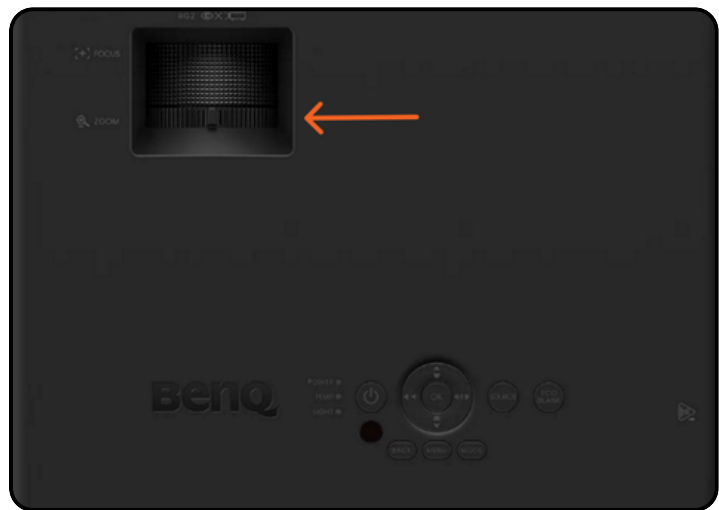


## 5. PROJECTOR AJUSTEMENTS

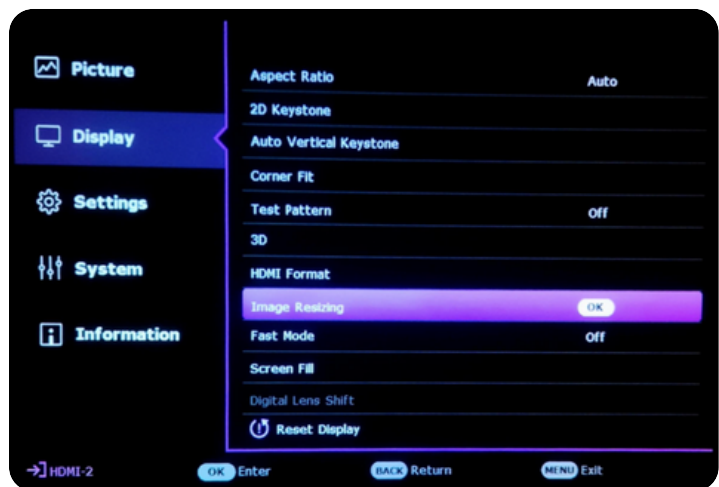
Each environment is unique, so this section may require a bit more time and patience. Depending on your setup (screen size, projector distance, ceiling height, etc.), the adjustments needed can vary significantly from one user to another.

Take the time to explore and combine the different adjustments below to achieve an image perfectly suited to your installation. Don't hesitate to repeat the process multiple times to fine-tune the result to your preferences.

- Zoom: Adjust the image size using the zoom dial under the lens

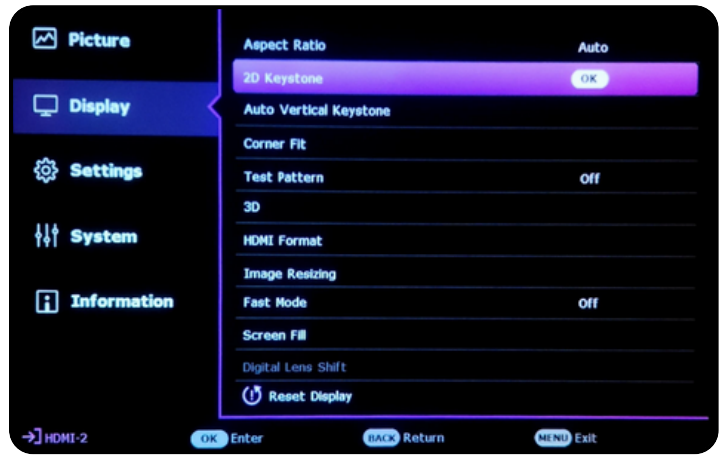


- Display > Image Resizing: Use Digital Shrink & Shift → Adjust the image so that it slightly exceeds the desired size on all sides

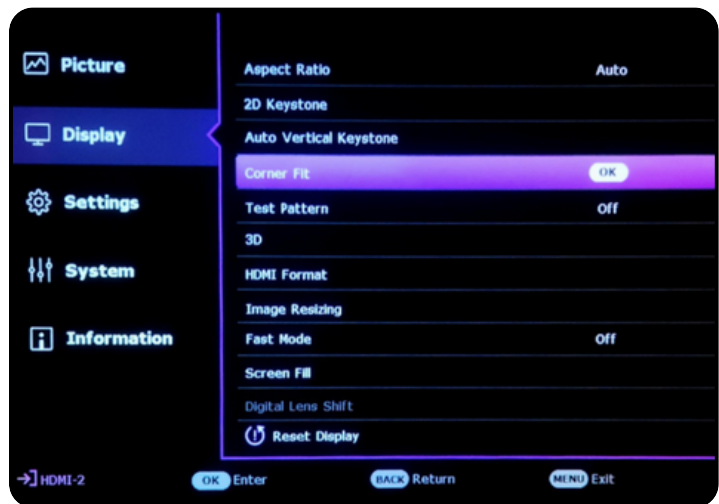


## 5. PROJECTOR AJUSTEMENTS (CONTINUED)

- Display > 2D Keystone: Correct vertical tilt and horizontal shift of the image



- Display > Corner Fit: Fine-tune the image size and position for precise alignment



- Focus: Adjust image sharpness using the focus dial under the lens

