



INSTALLATION GUIDE

SIMBOOTH 1

SimBooth Safety Notice	3
Parts List	4-5
Structure assembly	6-8
Floor assembly	9-10
Half walls installation	10
Projector installation	11-12
Wire cover installation	13
Appendix A (projector position)	14
Appendix B (AH30ST adjustment with monitor)	15-19
Appendix C (AH30ST adjustment without monitor)	20 -24
Appendix D (AK700ST adjustment)	25 -28



**WARNING**

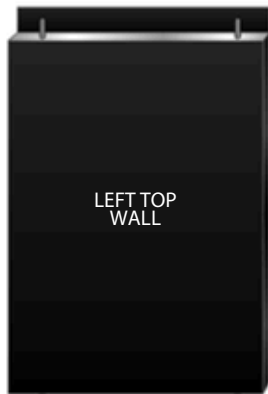
PLEASE READ THE FOLLOWING BEFORE USE.

FAILURE TO FOLLOW THE INSTRUCTIONS COULD RESULT IN SERIOUS INJURY, PROPERTY DAMAGE, AND/OR VOID THE DEVICE WARRANTY.

- NEVER lift, move, or raise the structure if the impact screen is not installed and secured. The impact screen plays a critical structural stabilization role. Lifting or handling the structure without the screen installed may cause the frame to become unstable, tip, or collapse. This may result in serious injury, death, or severe property damage.
- SimBooth structures are designed exclusively for indoor golf simulation. Do not use the structure for storage, climbing, or for hanging objects.
- Install only on a flat and stable floor capable of supporting the total weight of the structure. Assembly must be performed by a minimum of four (4) people.
- Ensure all bolts, screws, and panels are correctly tightened before use. Loose or missing components may cause instability or structural collapse.
- Do not remove or modify the impact screen during normal operation. The screen is essential to absorb golf ball impacts and help prevent injuries.
- Keep children and pets away from the hitting area. Always remain aware of your surroundings and use caution while swinging.
- Do not modify the structure or add any additional weight to the frame or ceiling area.
- Indoor use only. Do not expose the structure to outdoor conditions, excessive humidity, water infiltration, or direct sunlight. Recommended operating conditions: Temperature: 10°C to 35°C (50°F to 95°F) Humidity: 30% to 65%
- Verify that the ceiling height and room dimensions meet the requirements of your specific SimBooth model before installation.
- Inspect the structure regularly to detect: Loose hardware, Worn impact screen, Damaged panels, etc. Replace worn or damaged components as needed.
- Always follow official SimBooth installation instructions. Improper assembly may compromise safety and void the warranty.

WALL PANELS

LEFT WALLS



LEFT TOP WALL

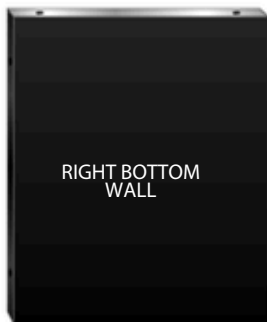


LEFT BOTTOM WALL

RIGHT WALLS

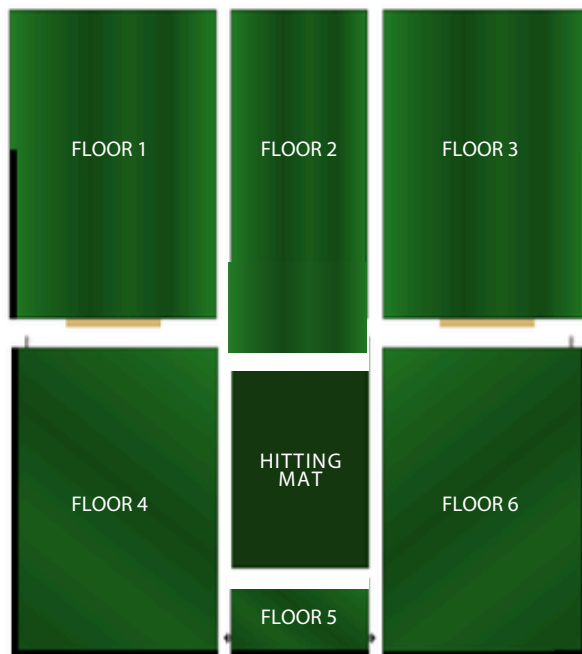


RIGHT TOP WALL



RIGHT BOTTOM WALL

FLOOR PANELS



CEILING PANELS



ACCESSOIRES

Bolt-01 (2x)



Wing nut (3x)



Washer (28x)



Nut (28x)



Bolt-02 (2x)



Bolt-03 (4x)



Black impact screen



Tees (10x)



Bolt-04 (2x)



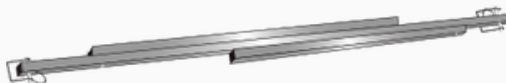
Allen Key



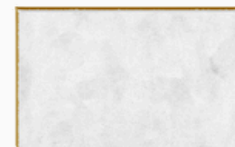
Hitting mat



Scissor bar



Shim 1/2"



White projection screen



Elevating bracket



Shim 1/8"



OPTIONALS

Half-Walls
(2x)



Projector & Remote



Projector Beam

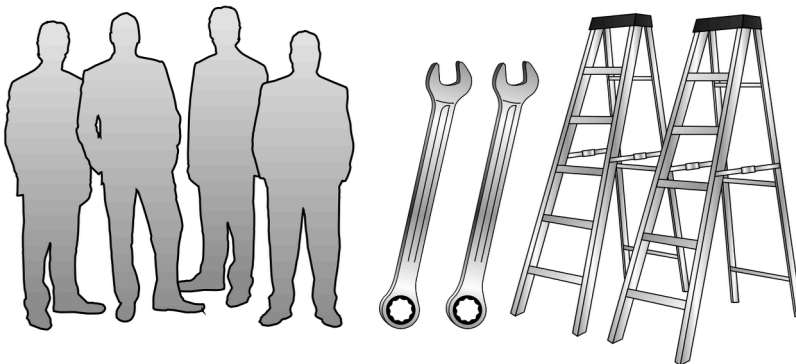


Wire Cover



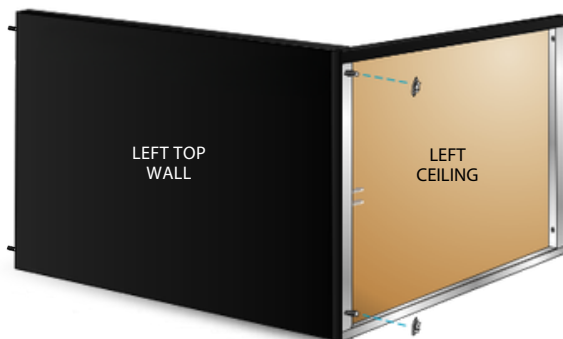
BEFORE STARTING

You will need 4 people, two ladders, and two 1/2" (13 mm) wrenches.

**1**

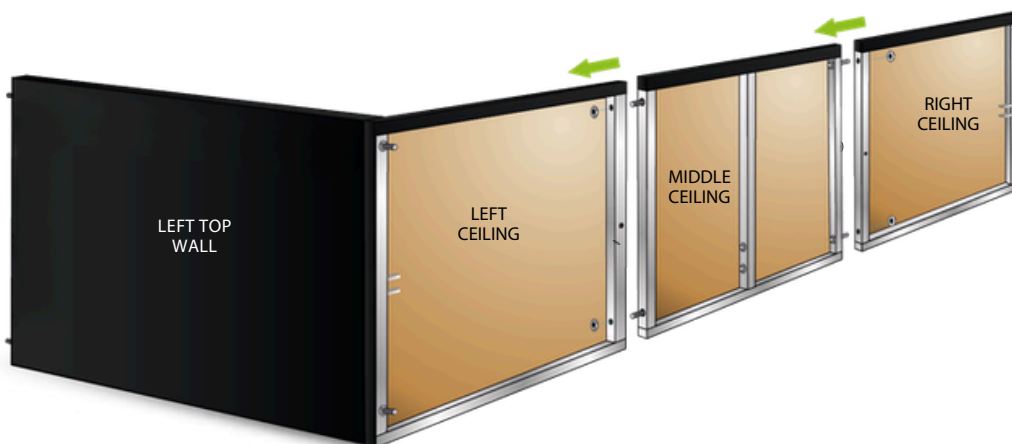
Attach the left top wall to the left ceiling with washers & nuts.

2x Washers
2x Nuts

**2**

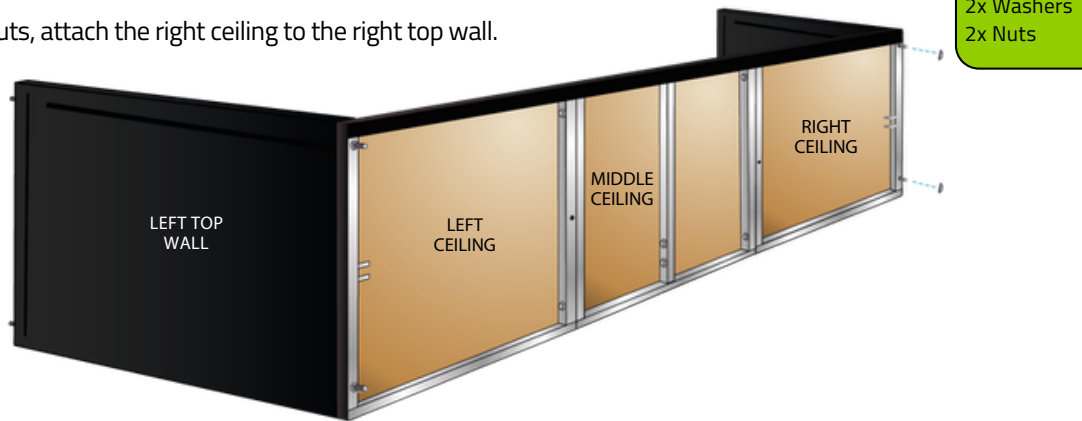
Using washers and nuts, attach the middle ceiling to the left ceiling, then attach the right ceiling to the middle ceiling.

4x Washers
4x Nuts



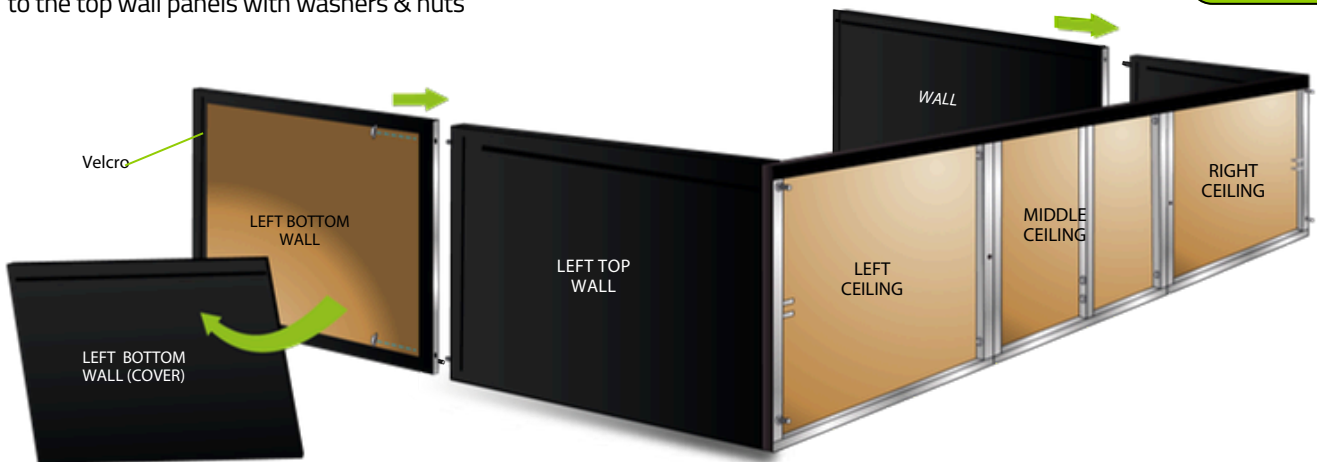
3

Using washers and nuts, attach the right ceiling to the right top wall.



4

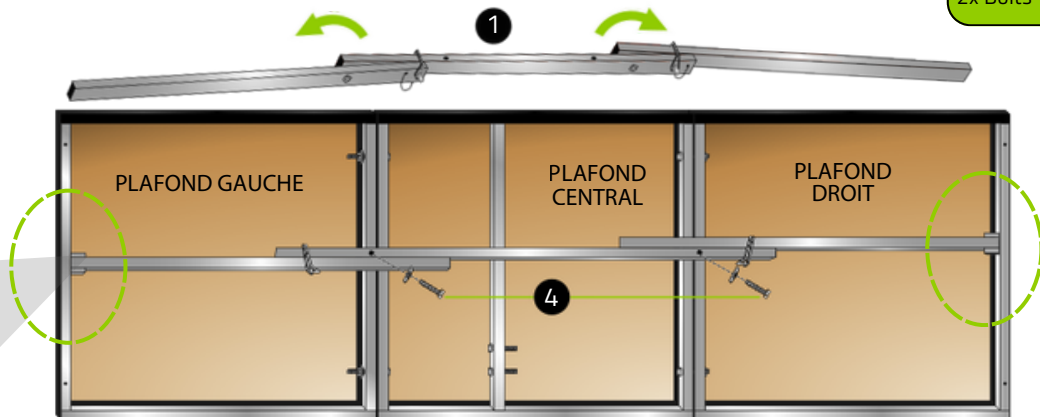
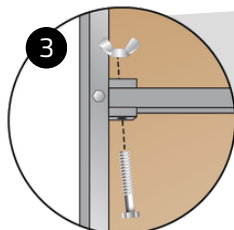
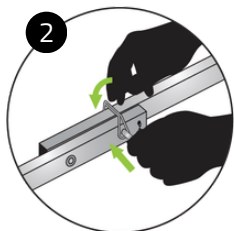
Remove the bottom wall covers, then attach the bottom wall panels to the top wall panels with washers & nuts



5

(1) Unfold the scissor bar (2) and secure it with the safety pins. (3) Attach the scissor bar to both ends of the structure using wing nuts and bolts-02. (4) Attach the scissor bar to the center of the structure using washers and bolts-01.

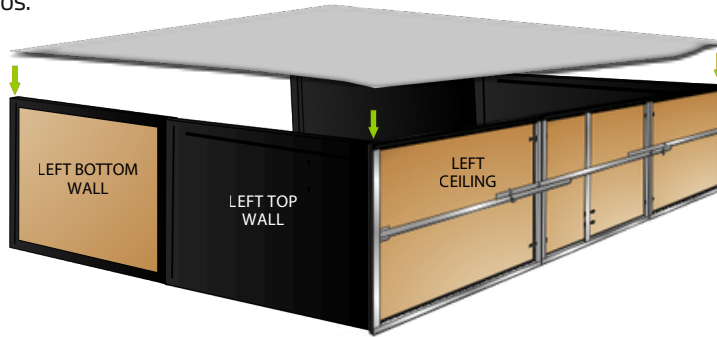
2x Washers
2x Wing Nuts
2x Bolts-01
2x Bolts-02



IT IS IMPORTANT TO COMPLETE THIS STEP BEFORE LIFTING THE STRUCTURE.

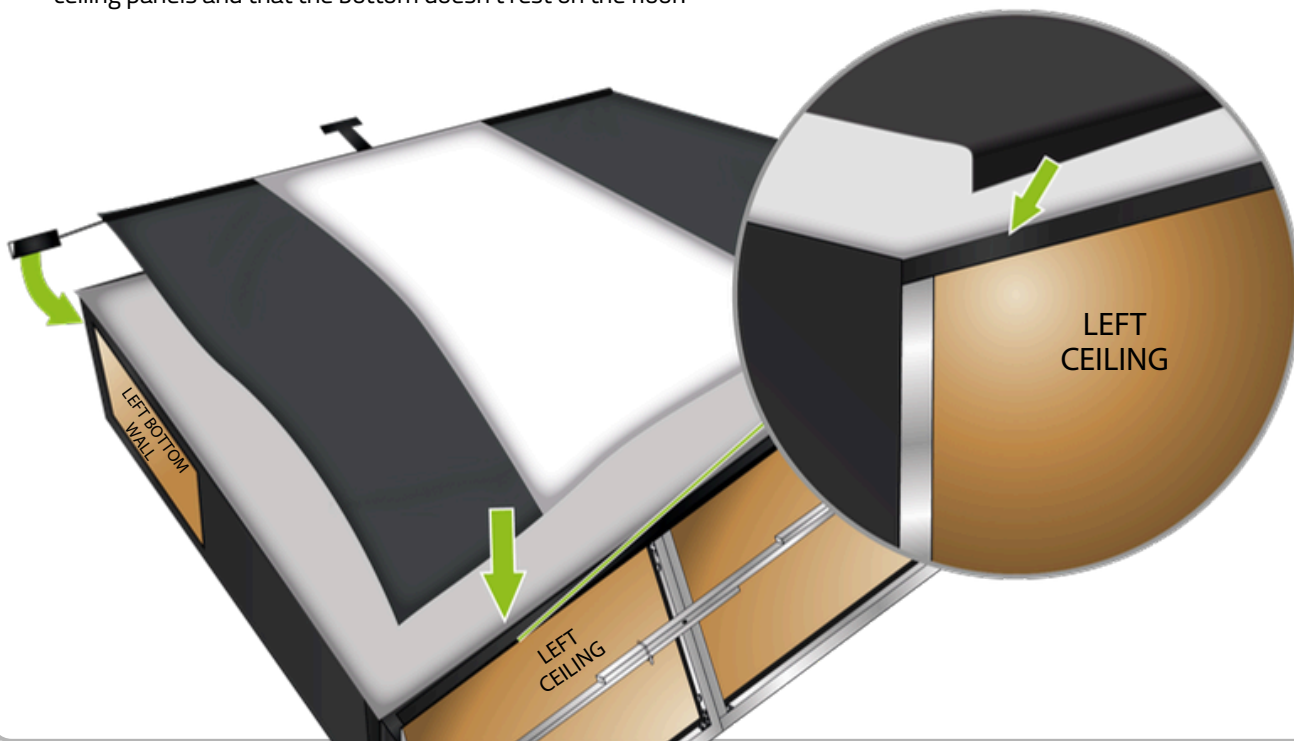
6

Attach the white projection screen to the structure using the velcros.



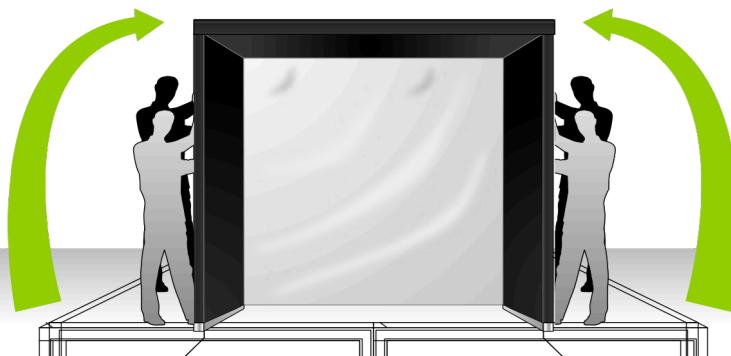
7

Attach the black impact screen over the white projection screen using the velcros. Make sure it is attached to the top velcros on the ceiling panels and that the bottom doesn't rest on the floor.



8

Lift the structure with 4 people.



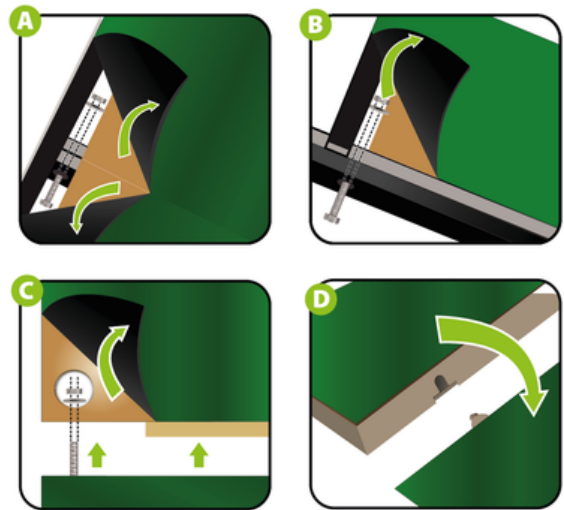
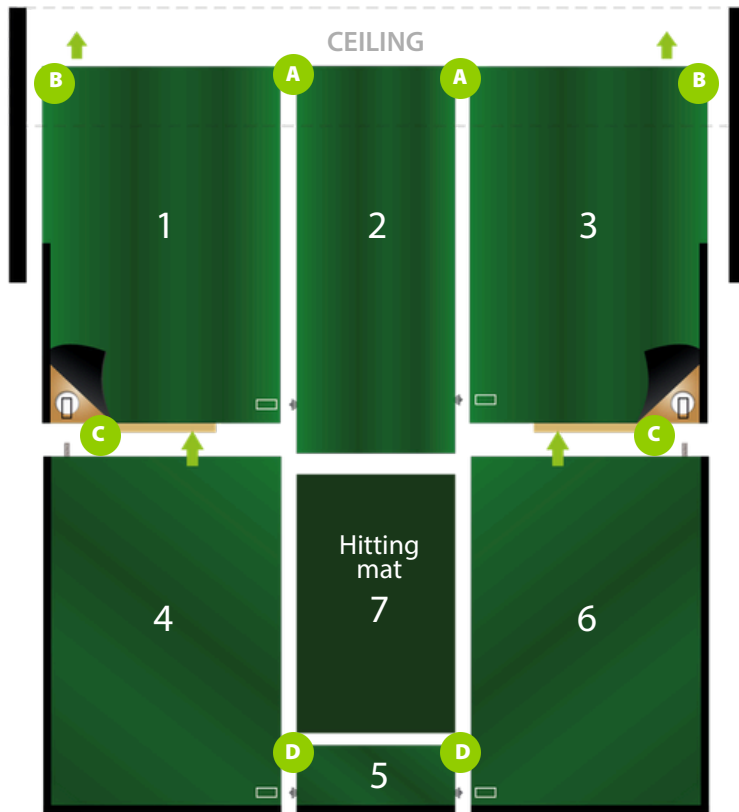
WARNING

Never lift or raise the structure if the white projection screen is not installed. The structure may tip or fall and cause serious injury.

1

Assemble the floor sections in order (1 to 7). For A and B, you will need bolts-03, washers, and nuts. For C, you will need washers and nuts. Use the shim to adjust the height of the hitting mat.

- 6x Washers
- 6x Nuts
- 4x Bolts-03



2

Step 1

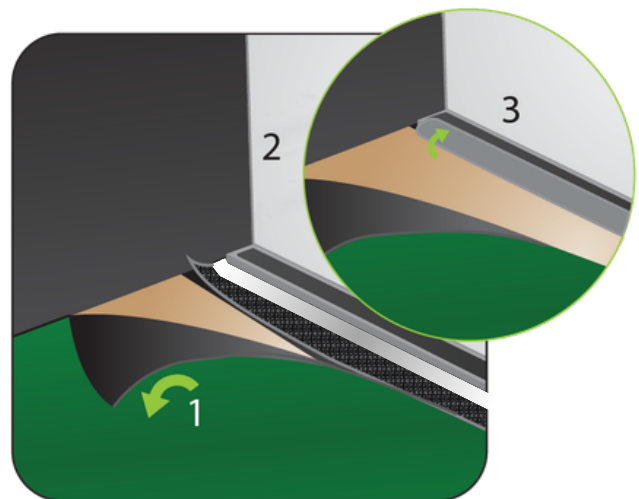
Lift green carpet.

Step 2

Stretch the white projection screen behind and under the aluminum bar and reach for it through the space.

Step 3

Attach it on the first half of the velcro on the aluminum bar.



3

Step 1

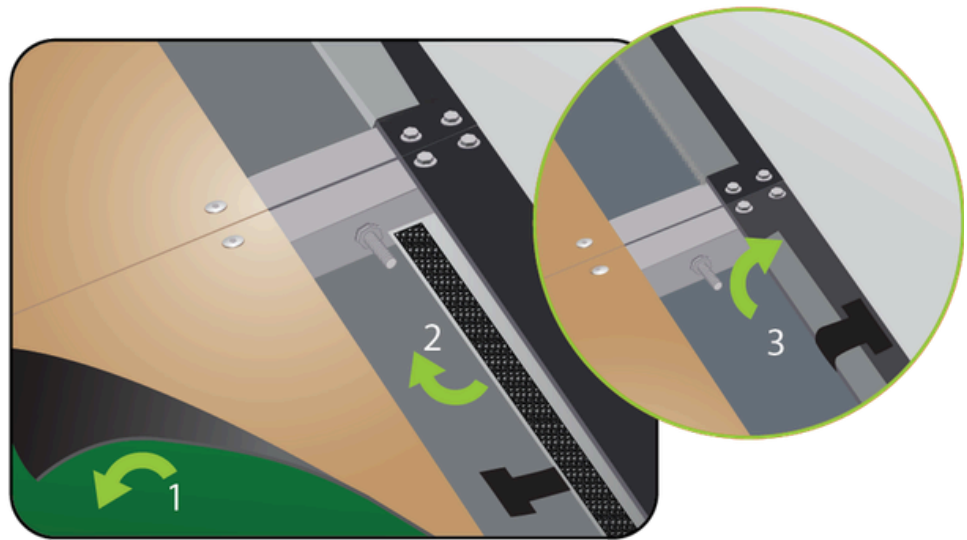
Lift green carpet.

Step 2

Stretch the black impact screen behind and under the aluminum bar and reach for it through the space.

Step 3

Attach the T on the remaining half.



END OF STRUCTURE FLOOR INSTALLATION SECTION

HALF WALLS INSTALLATION

4x Washers
4x Nuts

Simply cut through the black carpet to access the pre-drill holes and insert the half-walls. Attach the half-walls to the structure with washers and nuts. Then, attach the removable panel on the bottom walls with the velcro.

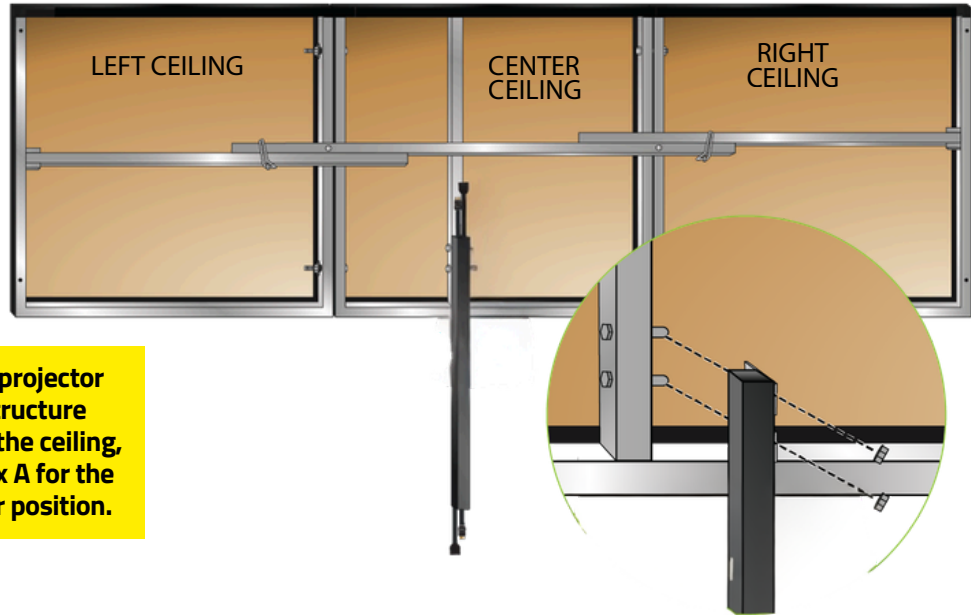


1

PROJECTOR BEAM INSTALLATION (OPTIONAL)

Attach the projector beam to the ceiling structure with washers and nuts.

2x Washers
2x Nuts

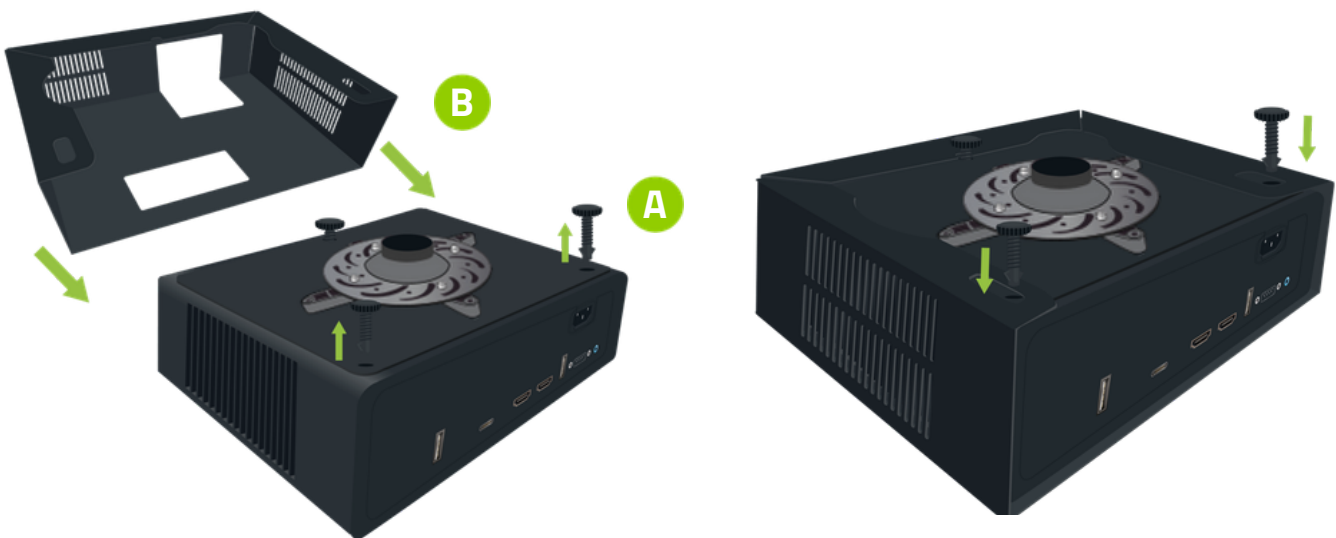


If you are not using the projector beam attached to the structure and plan to install it on the ceiling, please refer to Appendix A for the recommended projector position.

2

PROJECTOR ENCLOSURE INSTALLATION (OPTIONAL)

(A) To install the projector enclosure, first remove the rear adjuster feet of the projector completely, and slightly loosen the front adjustable foot without removing it. **(B)** Next, insert the projector into the enclosure, making sure the lens is properly aligned with the designated opening. **(C)** Finally, reinstall the removed adjustable feet through the holes of the enclosure to secure the projector in place, and re-tighten the front adjustable foot.



3

PROJECTOR INSTALLATION (OPTIONAL)

Attach the projector on the projector mount. Refer to the instruction sheet inside the projector box.



4

PROJECTOR CABLE CONNECTIONS

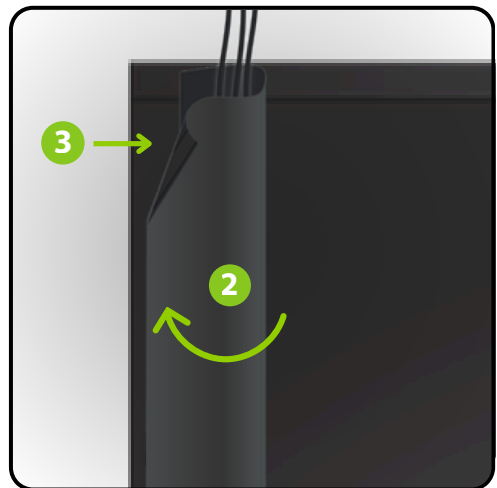
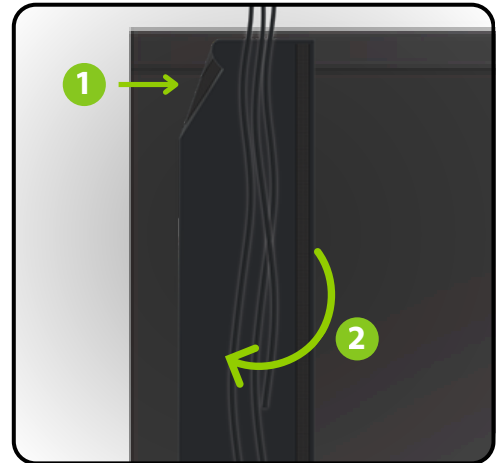
Plug the HDMI cable to the HDMI port on your projector and on your PC. Connect the power cable to the ground terminal and your electrical outlet. **Refer to Appendix B, C, D or E for your projector adjustments.**



**PLEASE
DO NOT
BEND**

WIRE COVER

Stick one side of the wire cover to the structure using the Velcro. Gather your wires inside the wire cover and, forming a loop over the wires, stick the second side of the wire cover just in front of your first Velcro.

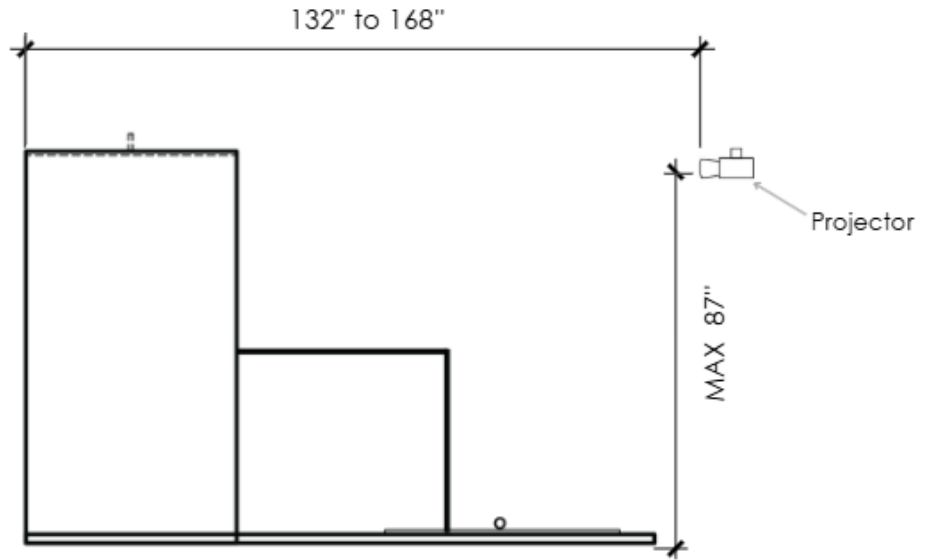


PROJECTOR PLACEMENT WHEN NOT USING THE PROJECTOR BEAM

Minimum projector distance:
132" (335.3 cm)
Screen to lens

Maximum projector distance:
168" (426.7 cm)
Screen to lens

Projector Height:
87" (221 cm)
Floor to the middle of the lens



BENQ AH30ST PROJECTOR AJUSTEMENTS WITH MONITOR

TABLE OF CONTENTS

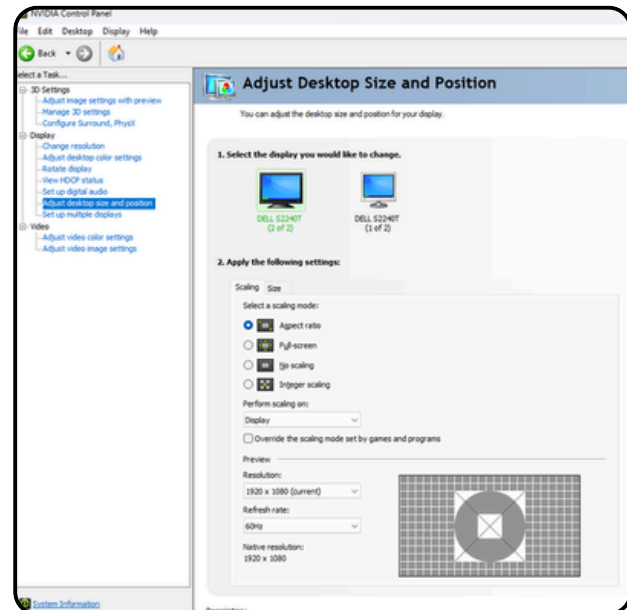
- | | |
|-----------------------------------|--------------------------|
| 1. Select the correct HDMI Source | 4. Projector Settings |
| 2. NVIDIA Control Panel (PC) | 5. Projector Ajustements |
| 3. Windows Display Settings (PC) | |

1. SELECT THE CORRECT HDMI SOURCE

1. Turn on the projector and press the 'Source' button on the remote control.
2. Use the arrows to navigate to the appropriate HDMI input (HDMI 1 or HDMI 2) and press 'OK' to select.

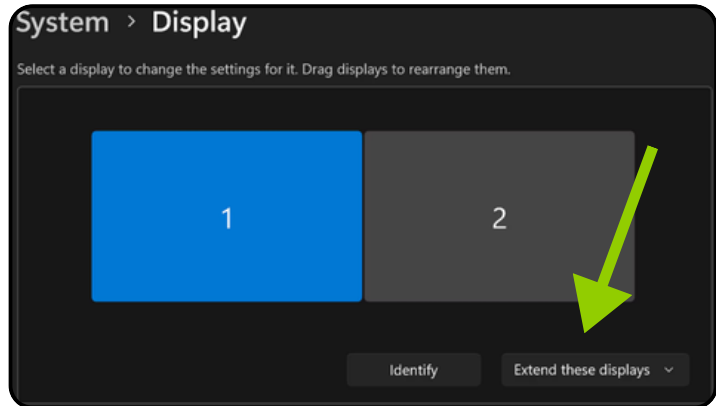
2. WINDOWS DISPLAY SETTINGS (PC)

1. Open the NVIDIA Control Panel & make sure the projector is turned on.
2. Click on "Adjust desktop size and position"
3. Select your monitor
4. Select "Aspect ratio"
5. Keep the resolution at 1920 x 1080
6. Select your projector
7. Select "Aspect ratio"
8. Keep the resolution at 1920 x 1080
9. Click "Apply" at the bottom right of the screen. Then "Yes" to "Apply Changes"



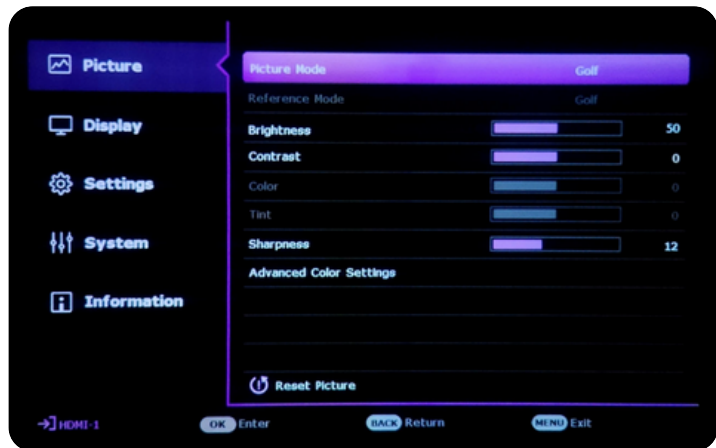
3. WINDOWS DISPLAY SETTINGS (PC)

1. Click Start > Settings
2. Go to System > Display
3. If both screens are detected, you will see two numbered rectangles (1 and 2)
4. Click on Extend these Display (menu below and to the right of the 2 screens)
5. Select "Duplicate these displays"
6. Click "Keep Change"
7. Make sure the display resolution is set to 1920 x 1080



4. PROJECTOR SETTINGS

1. Language: Select the desired language
2. Menu (On the remote) : Menu Type > Choose Advanced
3. Picture > Picture Mode: Select Golf



4. PROJECTOR SETTINGS (CONTINUED)

4. Display > Screen Fill: Choose 16:9 (1920 x 1080)



5. Display > Aspect Ratio : Select 16:10



5. PROJECTOR AJUSTEMENTS

Each environment is unique, so this section may require a bit more time and patience. Depending on your setup (screen size, projector distance, ceiling height, etc.), the adjustments needed can vary significantly from one user to another.

Take the time to explore and combine the different adjustments below to achieve an image perfectly suited to your installation. Don't hesitate to repeat the process multiple times to fine-tune the result to your preferences.

- Zoom: Adjust the image size using the zoom dial under the lens



- Display > Image Resizing: Use Digital Shrink & Shift → Adjust the image so that it slightly exceeds the desired size on all sides

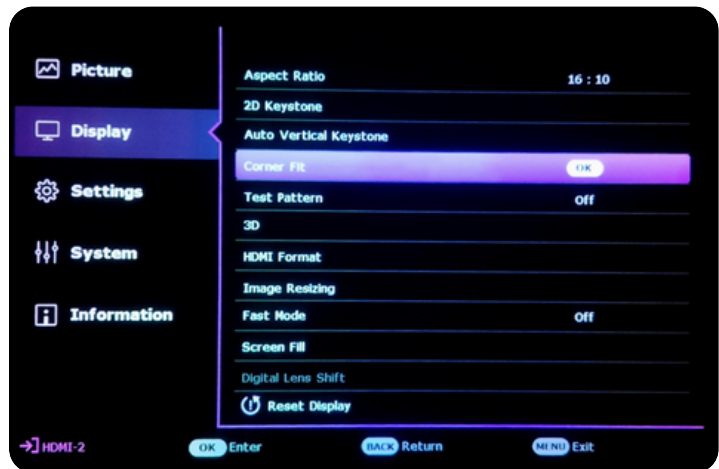


5. PROJECTOR AJUSTEMENTS (CONTINUED)

- Display > 2D Keystone: Correct vertical tilt and horizontal shift of the image



- Display > Corner Fit: Fine-tune the image size and position for precise alignment



- Focus: Adjust image sharpness using the focus dial under the lens



BENQ AH30ST PROJECTOR AJUSTEMENTS **WITHOUT MONITOR**

TABLE OF CONTENTS

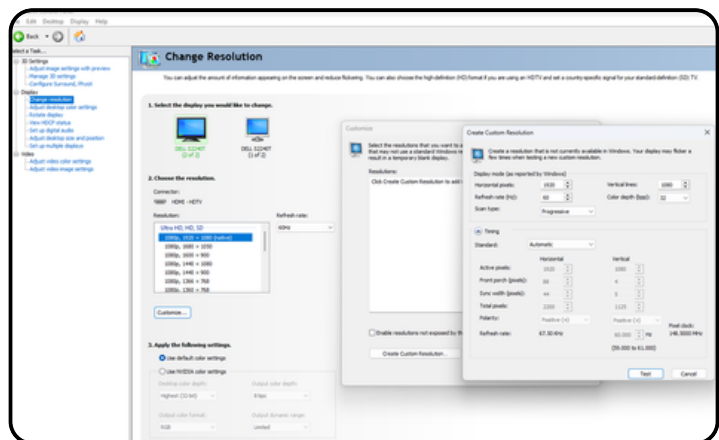
- | | |
|-----------------------------------|--------------------------|
| 1. Select the correct HDMI Source | 4. Projector Settings |
| 2. NVIDIA Control Panel (PC) | 5. Projector Ajustements |
| 3. Windows Display Settings (PC) | |

1. SELECT THE CORRECT HDMI SOURCE

1. Turn on the projector and press the 'Source' button on the remote control.
2. Use the arrows to navigate to the appropriate HDMI input (HDMI 1 or HDMI 2) and press 'OK' to select.

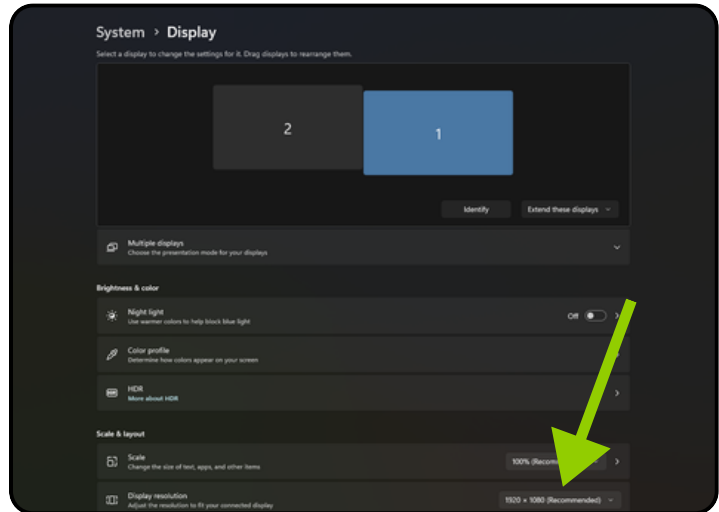
2. WINDOWS DISPLAY SETTINGS (PC)

1. Open the NVIDIA Control Panel
2. Click on Change resolution:
 - Customise > Create custom resolution
3. Under Display mode (as reported by Windows), Change :
 - Horizontal pixels to 1547
 - Vertical Lines to 1080
4. Click on Test > Apply change > Yes
5. Click on Adjust desktop size and position:
6. Select "Aspect ratio" (The projector must be turned on beforehand)
7. Change the Resolution to 1547 × 1080
8. Click "Apply" at the bottom right of the screen. Then "Yes" to "Apply Changes"



3. WINDOWS DISPLAY SETTINGS (PC)

1. Click Start > Settings
2. Go to System > Display
3. Make sure the display resolution is set to 1547 × 1080
4. If not, change it & Click "Yes" to Keep these display setting



4. PROJECTOR SETTINGS

1. Language: Select the desired language
2. Menu (On the remote) : Menu Type > Choose Advanced
3. Picture > Picture Mode: Select Golf

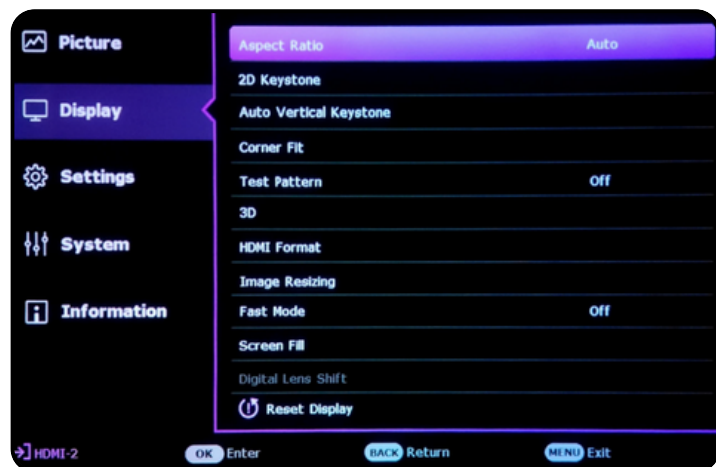


4. PROJECTOR SETTINGS (CONTINUED)

4. Display > Screen Fill: Choose 16:9 (1920 × 1080)



5. Display > Aspect Ratio : Select "Auto"



5. PROJECTOR AJUSTEMENTS

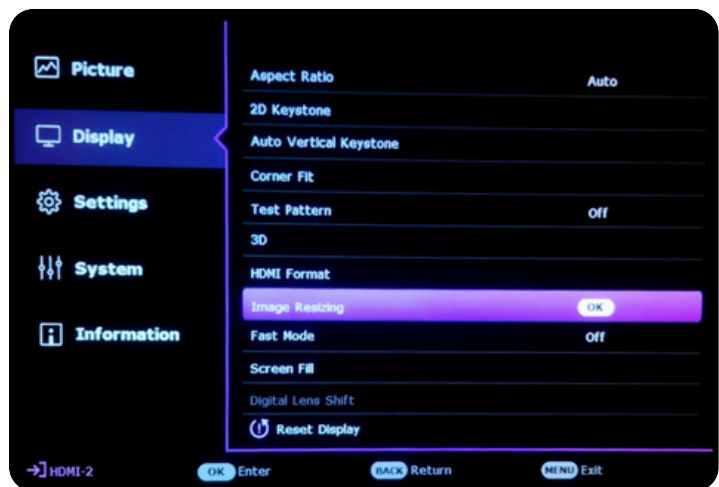
Each environment is unique, so this section may require a bit more time and patience. Depending on your setup (screen size, projector distance, ceiling height, etc.), the adjustments needed can vary significantly from one user to another.

Take the time to explore and combine the different adjustments below to achieve an image perfectly suited to your installation. Don't hesitate to repeat the process multiple times to fine-tune the result to your preferences.

- Zoom: Adjust the image size using the zoom dial under the lens

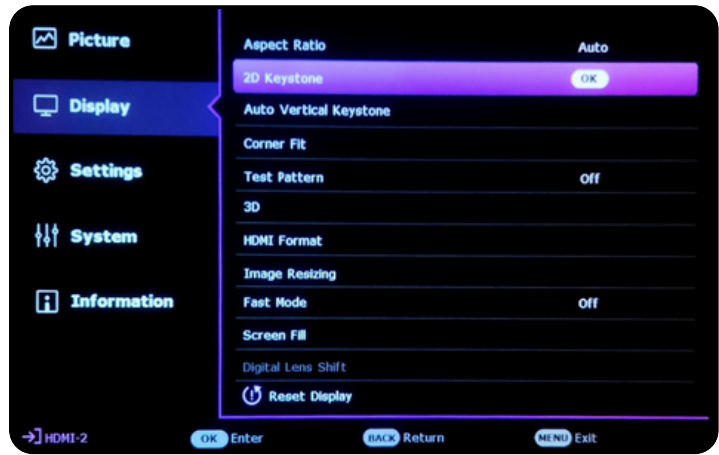


- Display > Image Resizing: Use Digital Shrink & Shift → Adjust the image so that it slightly exceeds the desired size on all sides

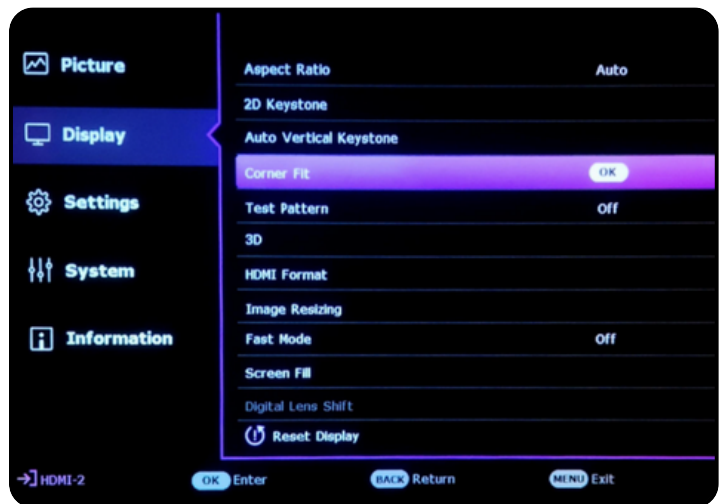


5. PROJECTOR AJUSTEMENTS (CONTINUED)

- Display > 2D Keystone: Correct vertical tilt and horizontal shift of the image



- Display > Corner Fit: Fine-tune the image size and position for precise alignment



- Focus: Adjust image sharpness using the focus dial under the lens



BENQ AK700ST PROJECTOR AJUSTEMENTS

Please note that **it is not possible** to achieve a full-screen projection when the projector is mounted on the projector beam installed on the simulator structure. In this setup, a strip of approximately 10 inches will not be projected at the top of the screen.

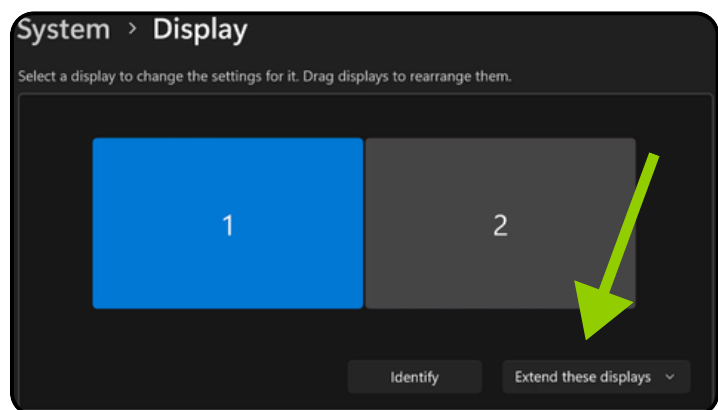
Regarding projector adjustment, some steps may vary if you are using an additional monitor along with the projector, as well as depending on your monitor's resolution.

1. SELECT THE CORRECT HDMI SOURCE

1. Turn on the BenQ AK700ST, then press Source (sometimes labeled **Input**) on the remote
2. Use the arrow buttons to highlight HDMI 1 or HDMI 2, then press OK to confirm
3. **If you see "No Signal"**: confirm the HDMI cable is connected, the computer is awake, and try the other HDMI input

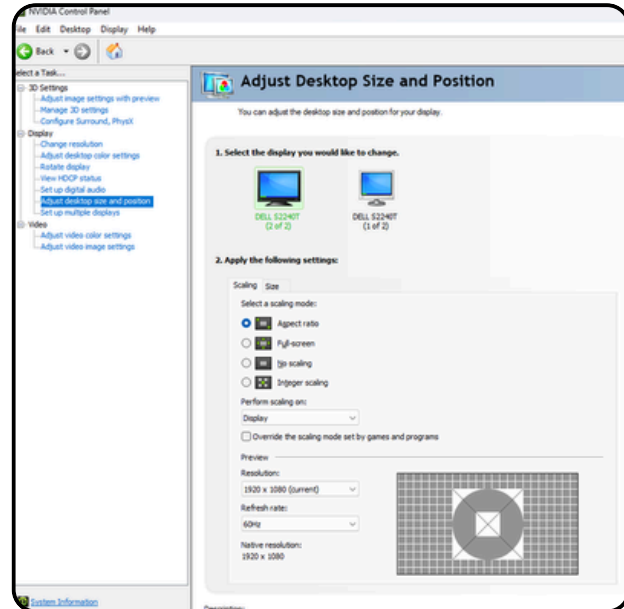
2. WINDOWS DISPLAY SETTINGS (PC)

1. Select Start > Settings
2. Go to System > Display
3. If both screens are detected, you will see two numbered rectangles 1 and 2. *(This option is only for users with both a monitor and a projector. Otherwise, proceed to step 6)*
4. Under Multiple displays, select Duplicate these displays
5. Select Keep changes when prompted
6. Confirm the display resolution is set to 3840 × 2160



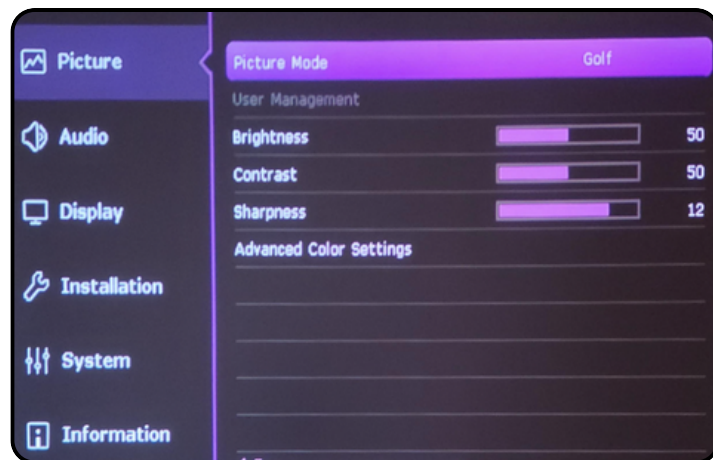
3. NVIDIA CONTROL PANEL (PC)

1. Open the NVIDIA Control Panel (make sure the projector is turned on)
2. Select Display > Adjust desktop size and position
3. Select your monitor, then set Scaling to Full-screen. *(If you are using only a projector, proceed to step 6)*
4. Keep (or change) the monitor resolution to 1920 x 1080 or 3840 x 1080 , as needed
5. Select your projector, then set Scaling to Full-screen
6. Set the projector resolution to 3840 x 2160
7. Select Apply (bottom-right), then select Yes to confirm Apply changes



4. PROJECTOR SETTINGS

1. Press Menu / Select Projector Position
2. Language / Select the desired language
3. Click Ok for the next two steps
4. Press Menu again / Menu Type / Advanced
5. Picture / Picture Mode / Golf
6. Display / Aspect Ratio / 16:10
7. Display / Screen Fill / 16:9



5. PROJECTOR AJUSTEMENTS

Each environment is unique, so this section may require a bit more time and patience. Depending on your setup (screen size, projector distance, ceiling height, etc.), the adjustments needed can vary significantly from one user to another.

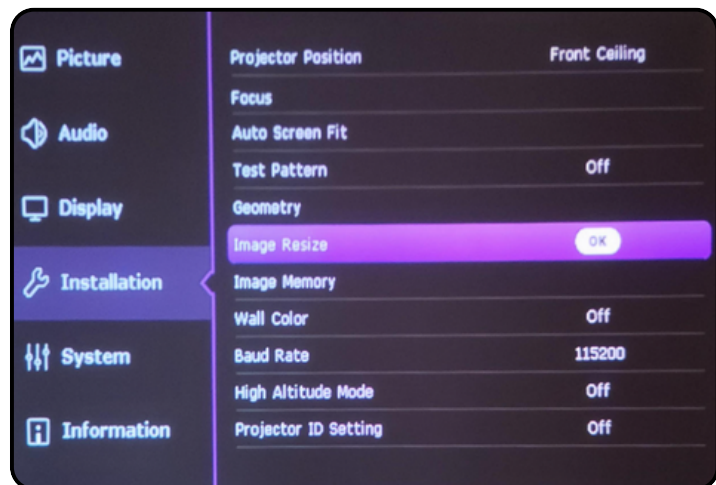
Take the time to explore and combine the different adjustments below to achieve an image perfectly suited to your installation. Don't hesitate to repeat the process multiple times to fine-tune the result to your preferences.

Start with physical alignment (recommended): make sure the projector is stable and centered, and that Projector Position is correct

- Menu / Installation / Image Resize / Digital Shrink & Shift

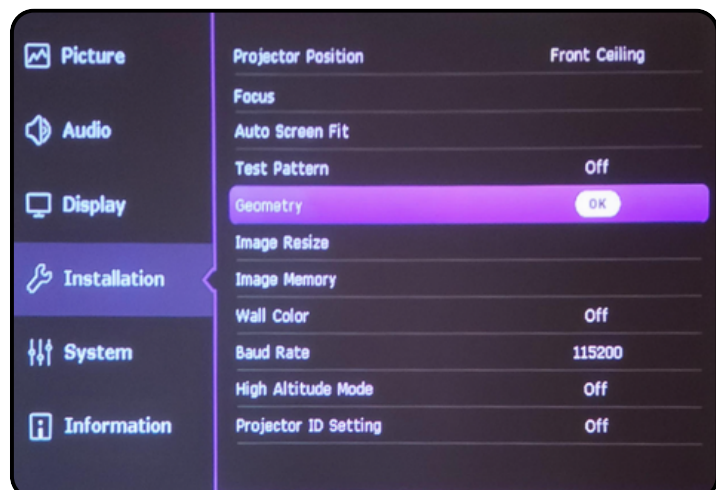
Adjust the image so that it is slightly larger than the desired projection area. You can then fine-tune it in the next step.

If you use the Shift function to move the image up, down, left, or right, it may reset the next time you turn on the projector. We recommend physically moving the projector instead.



- Installation / Geometry / Corner Fit

Fine-tune each corner so the image aligns precisely with the screen corners (top-left, top-right, bottom-right, bottom-left).



5. PROJECTOR AJUSTEMENTS (CONTINUED)

- Installation / Focus / Focus / Ok

Adjust the focus control on the projector until text and fine details look sharp (check the center first, then the corners)



- After the auto-focus, fine-tune the focus using the left and right arrows on the remote.

