



# INSTALLATION GUIDE

SIMBOOTH KIT 1 - 4K

# TABLE OF CONTENTS

Important informations .....	1
PC Specifications .....	2
Parts List .....	3-4
Structure assembly .....	5-7
Floor assembly .....	8-9
IDRA II installation .....	10
Projector installation .....	10-11
Cables connection .....	12-13
Golfn Launcher & IDRA II calibration .....	14
Appendix A (projector placement) .	15
Appendix B (AH30ST adjustments with a monitor) .....	16-19
Appendix C (AH30ST adjustments without a monitor) ...	20-23



**WARNING**

**PLEASE READ THE FOLLOWING BEFORE USE.**

**FAILURE TO FOLLOW THE INSTRUCTIONS COULD RESULT IN SERIOUS INJURY, PROPERTY DAMAGE, AND/OR VOID THE DEVICE WARRANTY.**

- 1.** Do NOT install IDRA II in a location where its operating temperature may be exceeded. Excessive temperatures may damage the launch monitor. Recommended operating temperature range is 0°C – 50°C (32°F – 122°F).
- 2.** Install IDRA II in a room free of excessive dust and humidity to prevent the lens or optical components of IDRA II from becoming clouded or dirty.
- 3.** Do NOT attempt to disassemble, repair, or modify IDRA II. Doing so may result in fire, electrical shock, or injury. Contact our support team if any problems occur with the launch monitor.
- 4.** Make sure the hitting zone is not located in direct sun exposure.
- 5.** Be aware of your surroundings and use cautiously with children around.
- 6.** Do NOT install IDRA II outside. This device is only designed for indoor use.
- 7.** Do NOT touch the LED light as it may cause burns, and avoid looking directly at the light to prevent potential eye damage.

## PC SPECIFICATIONS WITH GSPRO

Requirement	Minimum	Recommended
Processor	Intel Core i7, 10th Gen, with at least 16 logical processors	<b>Intel Core i7, 10th Gen or newer, with at least 24 logical processors</b>
Storage	512 GB	<b>1 TB</b>
GPU	Nvidia GeForce RTX 20 series	<b>Nvidia GeForce RTX 40 series or newer</b>
RAM memory	16 GB	<b>32 GB</b>
USB Ports	2 USB 3.0 & 1 USB-C ports are required	
Internet	High-speed Internet is required	

## PC SPECIFICATIONS WITH E6 CONNECT

Requirement	Minimum	Recommended
Processor	Intel Core i7, 10th Gen or newer, with at least 16 logical processors	
Storage	512 GB	
GPU	Nvidia GeForce RTX 20 series	<b>Nvidia GeForce RTX 30 series or newer</b>
RAM memory	16 GB	
USB Ports	2 USB 3.0 & 1 USB-C ports are required	
Internet	High-speed Internet is required	



**AMD PROCESSORS ARE NOT SUPPORTED.**

**DO NOT USE USB CABLE EXTENSION BETWEEN YOUR PC AND YOUR IDRA II.**



# PARTS LIST

## WALL PANELS

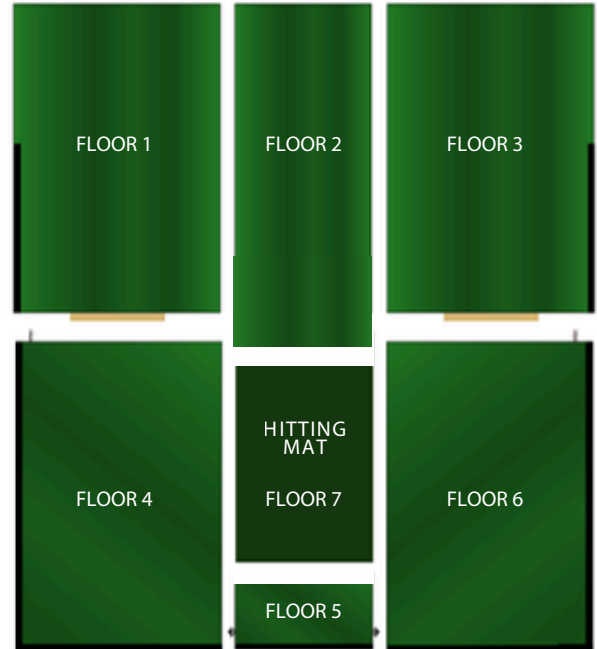
LEFT WALLS



RIGHT WALLS



## FLOOR PANELS



## CEILING PANELS



# PARTS LIST

## ACCESSOIRES

Bolt-01 (2x)



Washer (28x)



Wing nut (3x)



Nut (28x)



Bolt-04 (2x)



Allen Key



Bolt-02 (2x)



Bolt-03 (8x)



Elevating bracket



Tees (10x)



Remote & Projector



Black impact screen



White projection screen



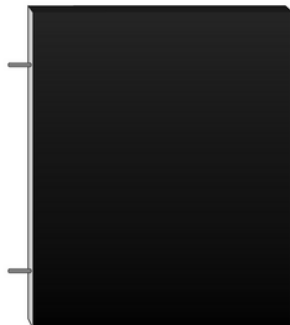
Scissor bar



Hitting mat



Half wall (2x)



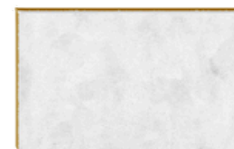
Projector beam



Wire cover



Shim 1/2"



Shim 1/8"



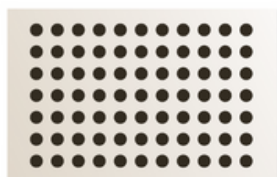
## LAUNCH MONITOR

IDRA II AI launch monitor



With power cable and two  
USB camera cables (1x)

Calibration board (1x)



Nuts + Washers  
(2x)



USB Hub (1x)



Wireless remotely  
operated switch (1x)  
(Only included in North America)

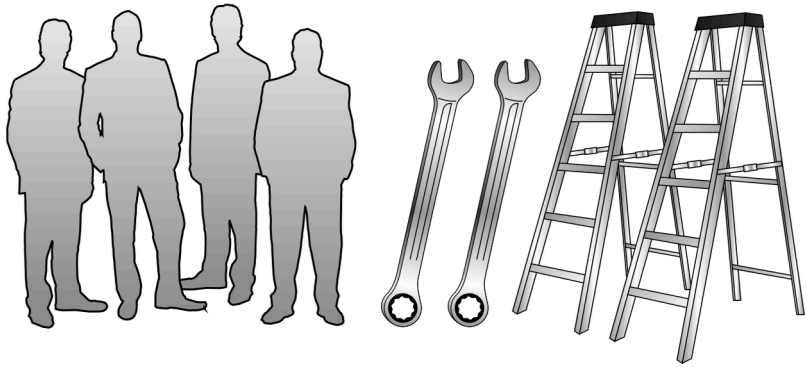


For illustration purposes only. Model may vary.

END OF PARTS LIST

### BEFORE STARTING

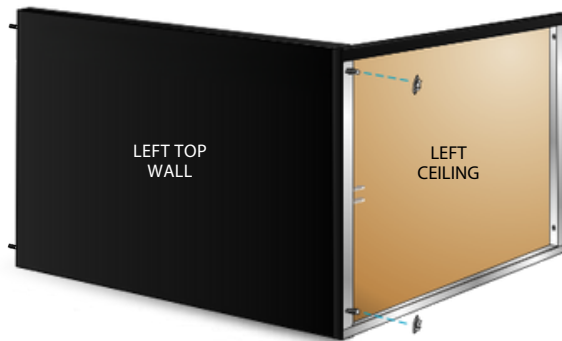
You will need 4 people, two ladders, and two 1/2" wrenches.



1

Attach the left top wall to the left ceiling with washers & nuts.

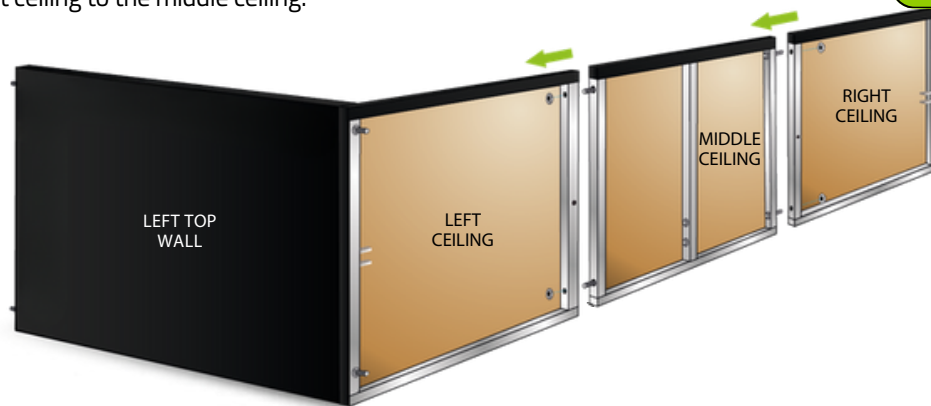
2x Washers  
2x Nuts



2

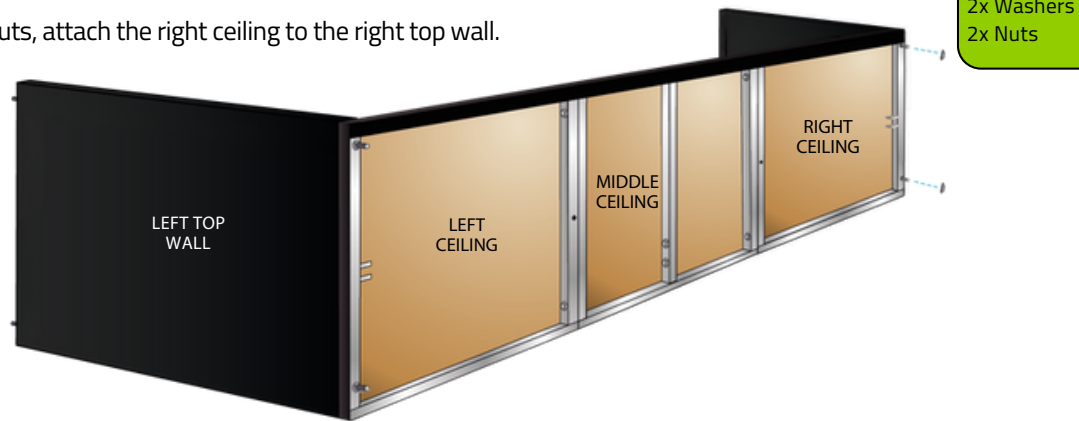
Using bolts-03, washers, and nuts, attach the middle ceiling to the left ceiling, then attach the right ceiling to the middle ceiling.

4x Bolt-03  
4x Washers  
4x Nuts



3

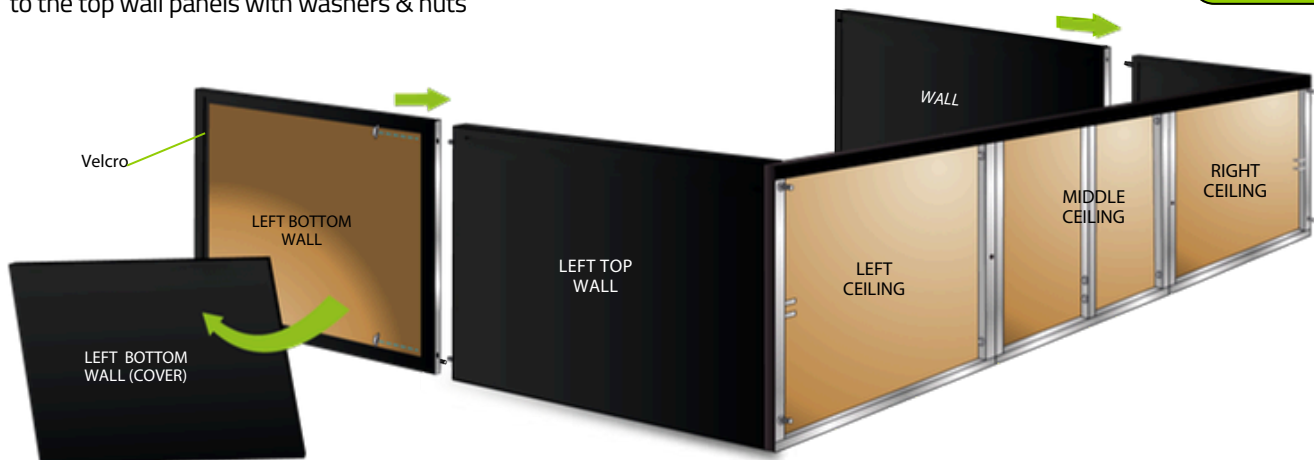
Using washers and nuts, attach the right ceiling to the right top wall.



2x Washers  
2x Nuts

4

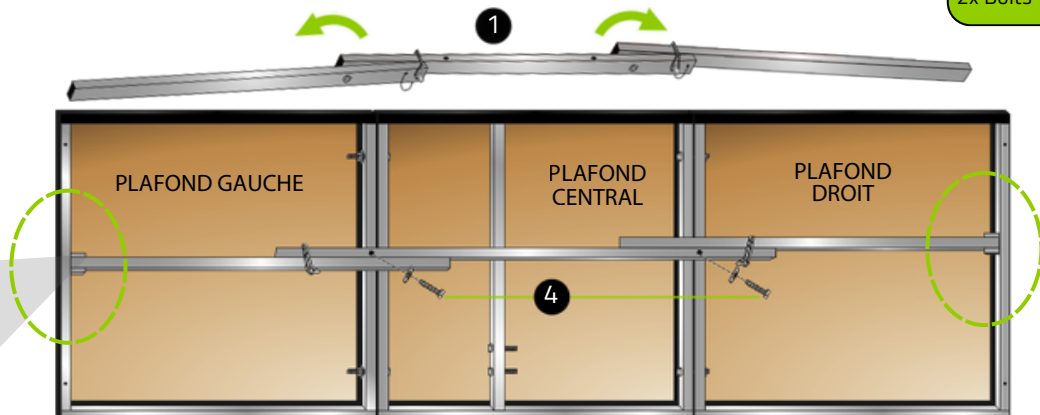
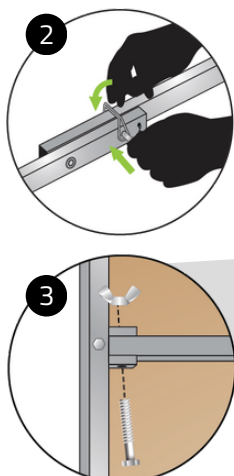
Remove the bottom wall covers, then attach the bottom wall panels to the top wall panels with washers & nuts



4x Washers  
4x Nuts

5

**(1)** Unfold the scissor bar **(2)** and secure it with the safety pins. **(3)** Attach the scissor bar to both ends of the structure using wing nuts and bolts-02. **(4)** Attach the scissor bar to the center of the structure using washers and bolts-01.

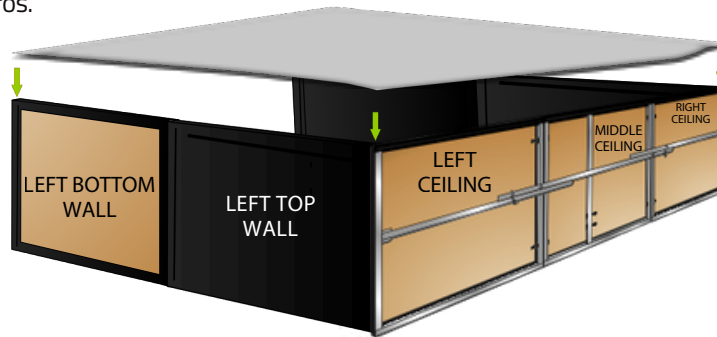


2x Washers  
2x Wing Nuts  
2x Bolts-01  
2x Bolts-02

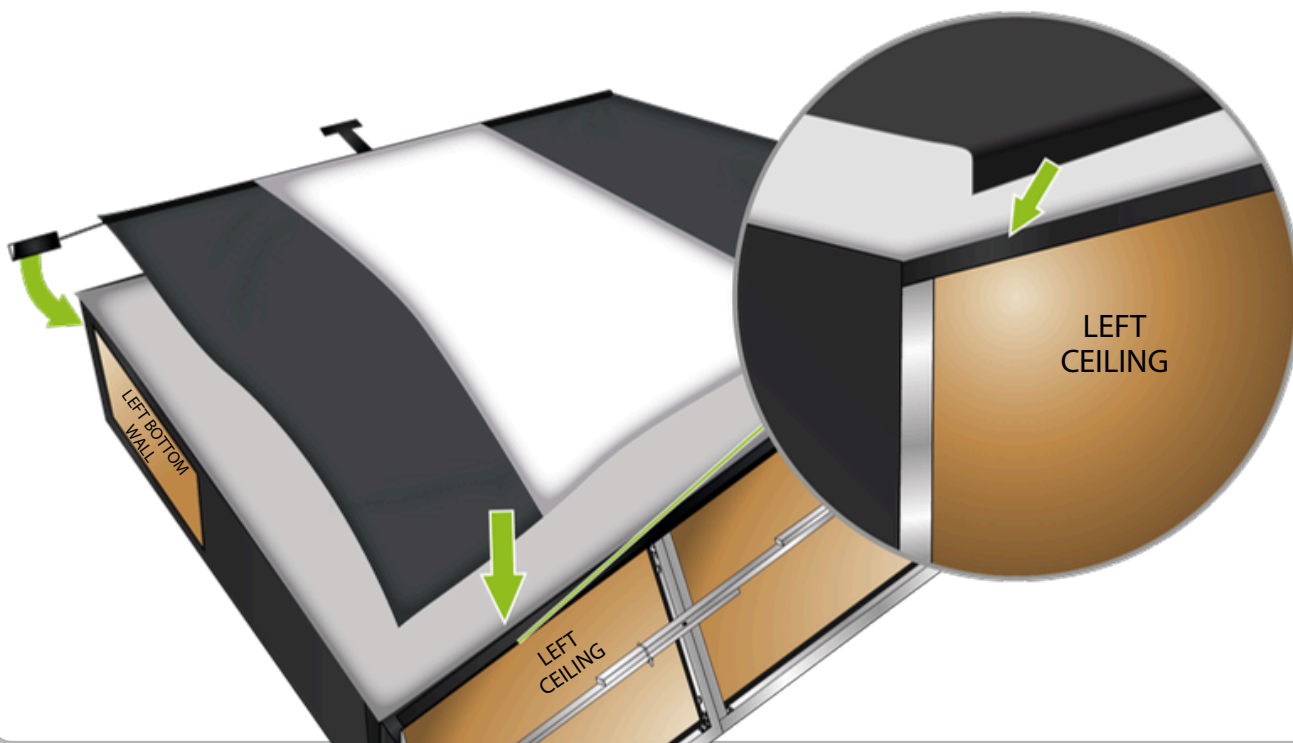
IT IS IMPORTANT TO COMPLETE THIS STEP BEFORE LIFTING THE STRUCTURE.

**6**

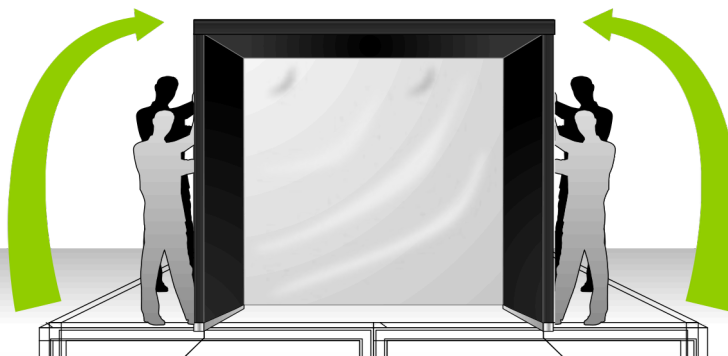
Attach the white projection screen to the structure using the velcros.


**7**

Attach the black impact screen over the white projection screen using the velcros. Make sure it is attached to the top velcros on the ceiling panels and that the bottom doesn't rest on the floor.


**8**

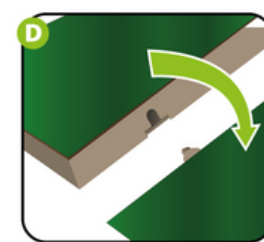
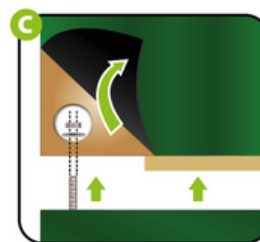
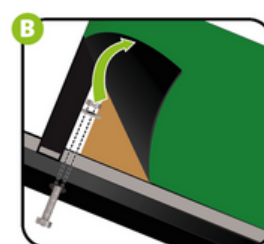
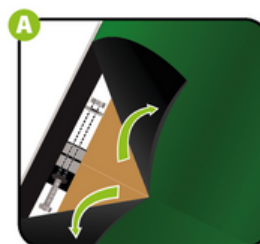
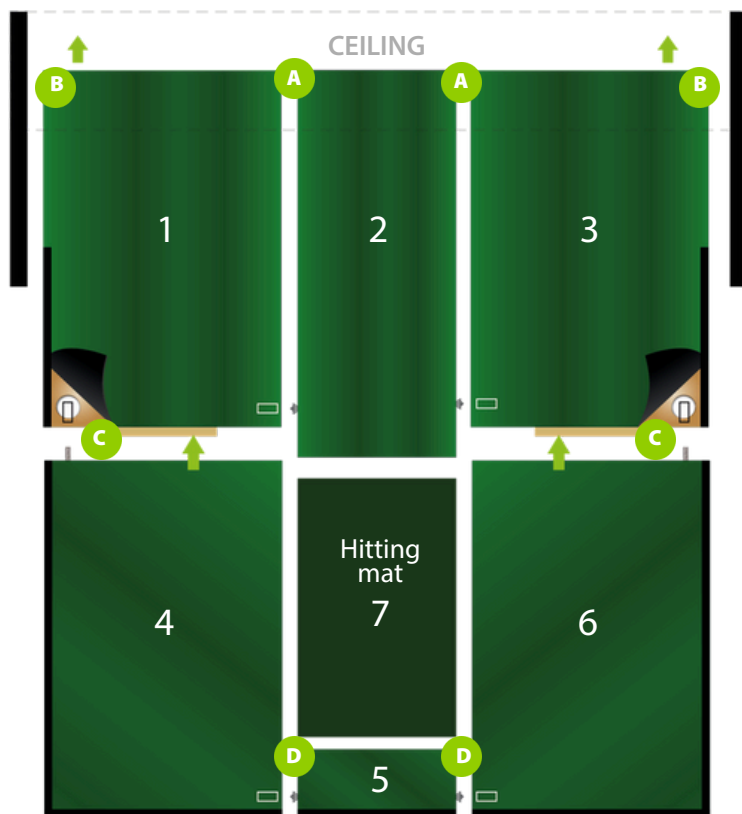
Lift the structure with 4 people.



1

Assemble the floor sections in order (1 to 7). For A and B, you will need bolts-03, washers, and nuts. For C, you will need washers and nuts. Use the shim to adjust the height of the hitting mat.

6x Washers  
6x Nuts  
4x Bolts-03



2

### Step 1

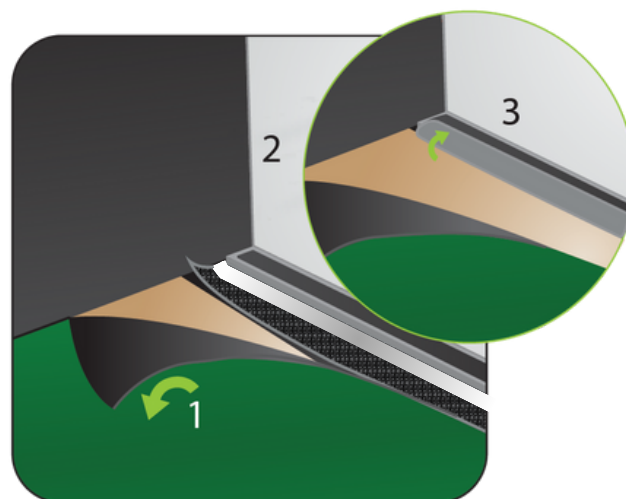
Lift green carpet.

### Step 2

Stretch the white projection screen behind and under the aluminum bar and reach for it through the space.

### Step 3

Attach it on the first half of the velcro on the aluminum bar.



3

**Step 1**

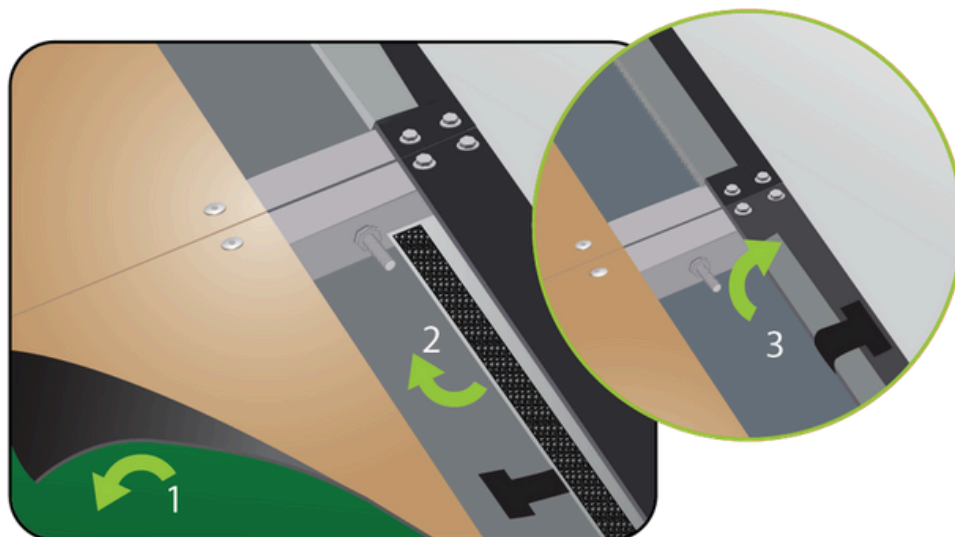
Lift green carpet.

**Step 2**

Stretch the black impact screen behind and under the aluminum bar and reach for it through the space.

**Step 3**

Attach the T on the remaining half.



END OF STRUCTURE FLOOR INSTALLATION SECTION

## HALF WALLS INSTALLATION

 4x Washers  
 4x Nuts

Simply cut through the black carpet to access the pre-drill holes and insert the half-walls. Fix the half-walls to the structure with washers and nuts. Then, fix the removable panel on the bottom walls with the velcro.





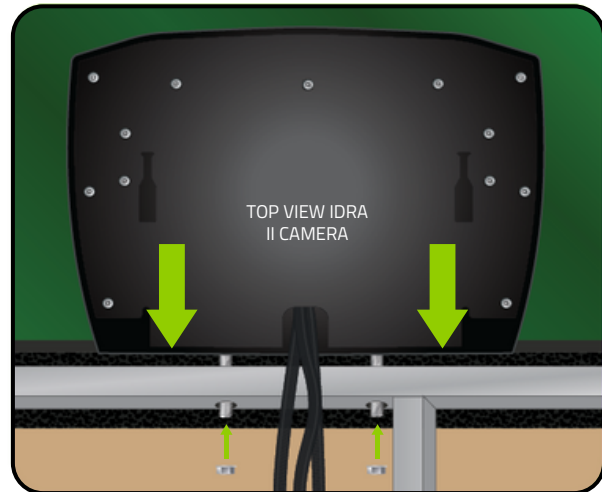
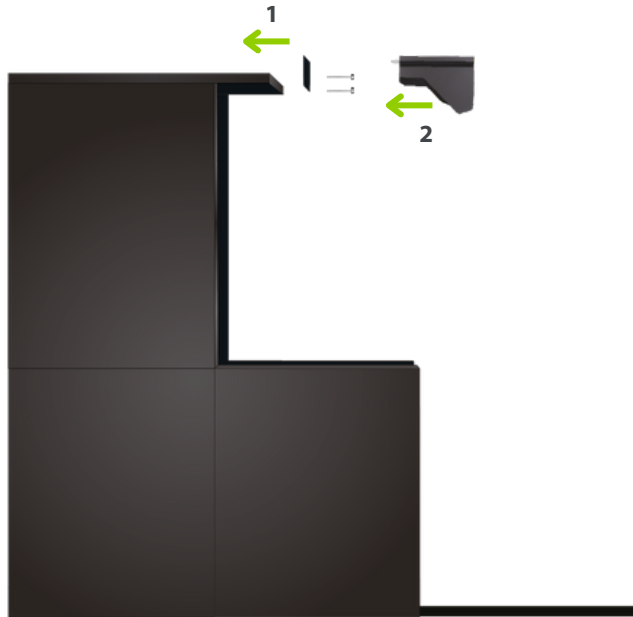
1

## IDRA II INSTALLATION

Climb on a ladder and attach the IDRA II camera through the holes that are located at the center the structure. Then, secure it tightly with two nuts on the other side.

2x Washers  
2x Nuts  
2x Bolts-04

**\*To be able to achieve a full-screen projection, you must install your IDRA II on the elevating bracket. Using the Allen key, attach the mount through the holes located at the front of the central ceiling using bolt-04, washers, and nuts. Finally, secure the IDRA II onto it.**

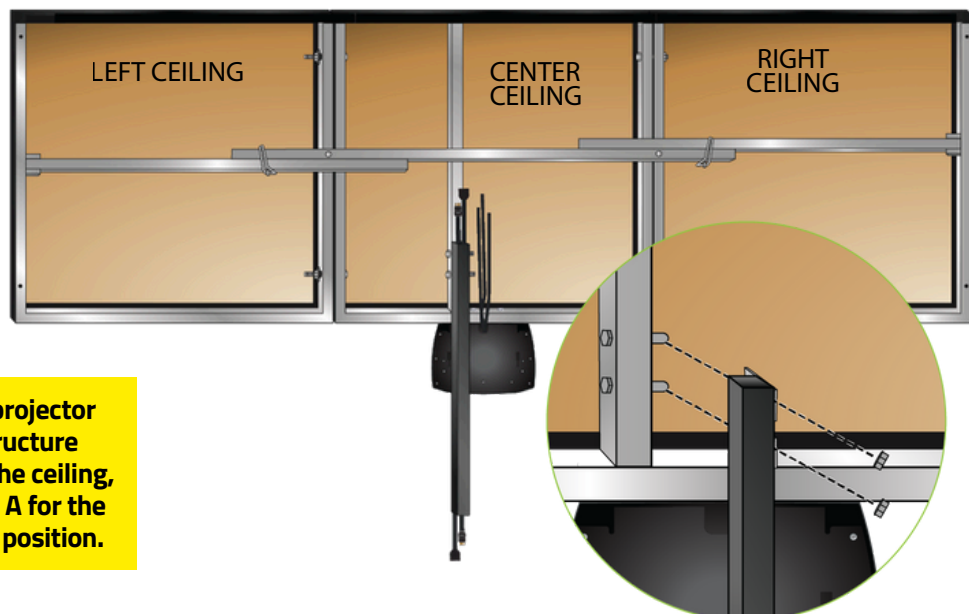


2

## PROJECTOR BEAM INSTALLATION

Attach the projector beam to the ceiling structure with washers and nuts.

2x Washers  
2x Nuts



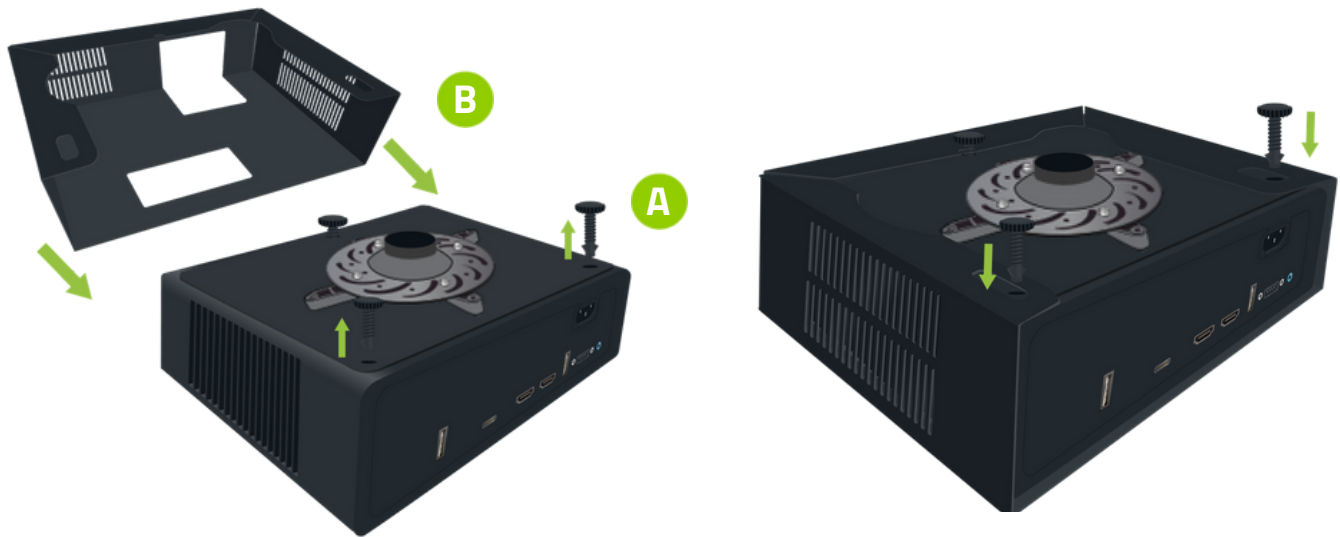
**If you are not using the projector beam attached to the structure and plan to install it on the ceiling, please refer to Appendix A for the recommended projector position.**



3

### PROJECTOR ENCLOSURE INSTALLATION (OPTIONAL)

**(A)** To install the projector enclosure, first remove the rear adjuster feet of the projector completely, and slightly loosen the front adjustable foot without removing it. **(B)** Next, insert the projector into the enclosure, making sure the lens is properly aligned with the designated opening. **(C)** Finally, reinstall the removed adjustable feet through the holes of the enclosure to secure the projector in place, and re-tighten the front adjustable foot.



4

### PROJECTOR INSTALLATION

Attach the projector on the projector mount. Refer to the instruction sheet inside the projector box.



## IDRA CABLE CONNECTIONS

Connect the power cable (country-specific) to the wireless remote switch. Then, plug the wireless remote switch into your electrical outlet. Connect one of the two USB camera cables to the USB 3.0 SS port on your PC and the other to the hub. Plug the hub into the USB-C port on your PC. Make sure the USB cables are not under tension.



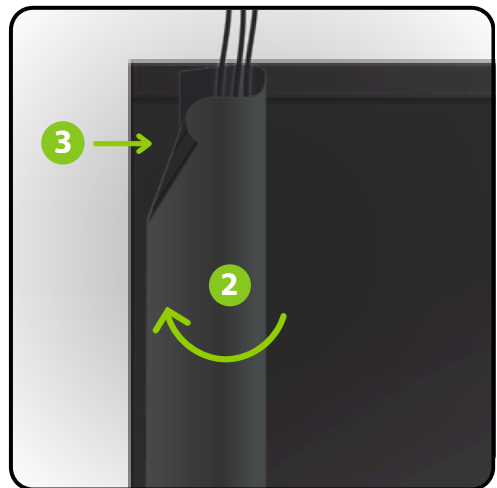
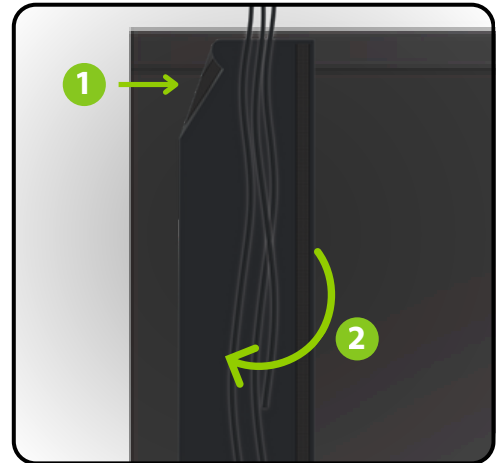
## PROJECTOR CABLE CONNECTIONS

Plug the HDMI cable to the HDMI port on your projector and on your PC. Connect the power cable to the ground terminal and your electrical outlet. **Refer to Appendix B, C, D or E for your projector adjustments.**



## WIRE COVER

Stick one side of the wire cover to the structure using the Velcro. Gather your wires inside the wire cover and, forming a loop over the wires, stick the second side of the wire cover just in front of your first Velcro.



## GOLFIN LAUNCHER INSTALLATION AND IDRA II CALIBRATION

Follow these steps to complete your installation:

### STEP 1

Ensure your computer is connected to the Internet.

### STEP 2

Confirm that you have purchased the necessary software. IDRA II is compatible with GSPro and E6 Connect.

### STEP 3

Visit <https://simbooth.com/steps-to-follow/>, then start following the steps from Step 2.

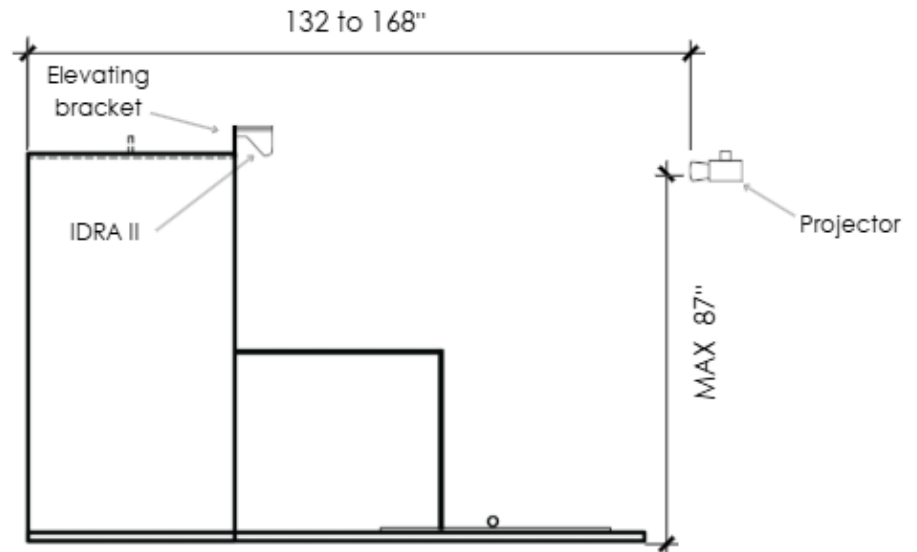
1

## PROJECTOR PLACEMENT WHEN NOT USING THE PROJECTOR BEAM

Minimum projector distance:  
132" (335.3 cm)  
Screen to lens

Maximum projector distance:  
168" (426.7 cm)  
Screen to lens

Projector Height:  
87" (221 cm)  
Floor to the middle of the lens



# BENQ AK700ST PROJECTOR AJUSTEMENTS **WITH MONITOR**

## TABLE OF CONTENTS

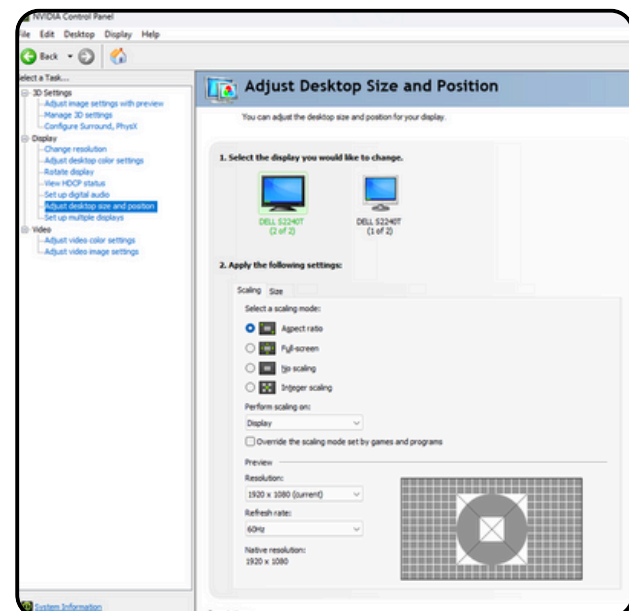
- |                                   |                          |
|-----------------------------------|--------------------------|
| 1. Select the correct HDMI Source | 4. Projector Settings    |
| 2. NVIDIA Control Panel (PC)      | 5. Projector Ajustements |
| 3. Windows Display Settings (PC)  |                          |

## 1.SELECT THE CORRECT HDMI SOURCE

- 1.Turn on the projector and press the 'Source' button on the remote control.
- 2.Use the arrows to navigate to the appropriate HDMI input (HDMI 1 or HDMI 2) and press 'OK' to select.

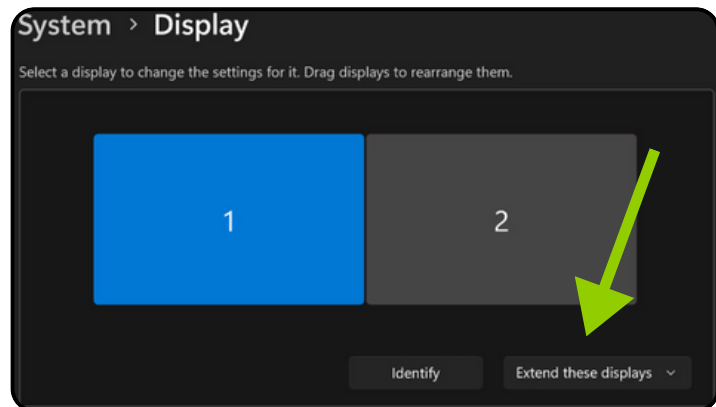
## 2.WINDOWS DISPLAY SETTINGS (PC)

1. Open the NVIDIA Control Panel & make sure the projector is turned on.
2. Click on "Adjust desktop size and position"
3. Select your monitor
4. Select "Aspect ratio"
5. Keep the resolution at 1920 × 1080
6. Select your projector
7. Select "Aspect ratio"
8. Keep the resolution at 1920 × 1080
9. Click "Apply" at the bottom right of the screen. Then "Yes" to "Apply Changes"



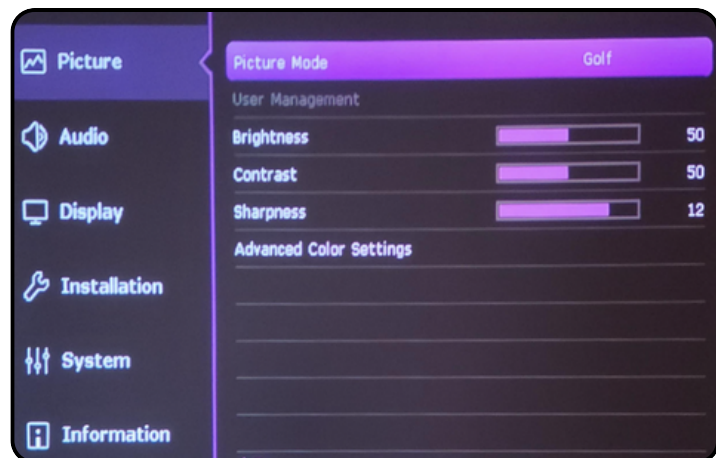
### 3. WINDOWS DISPLAY SETTINGS (PC)

1. Click Start > Settings
2. Go to System > Display
3. If both screens are detected, you will see two numbered rectangles (1 and 2)
4. Click on Extend these Display (menu below and to the right of the 2 screens)
5. Select "Duplicate these displays"
6. Click "Keep Change"
7. Make sure the display resolution is set to 1920 x 1080

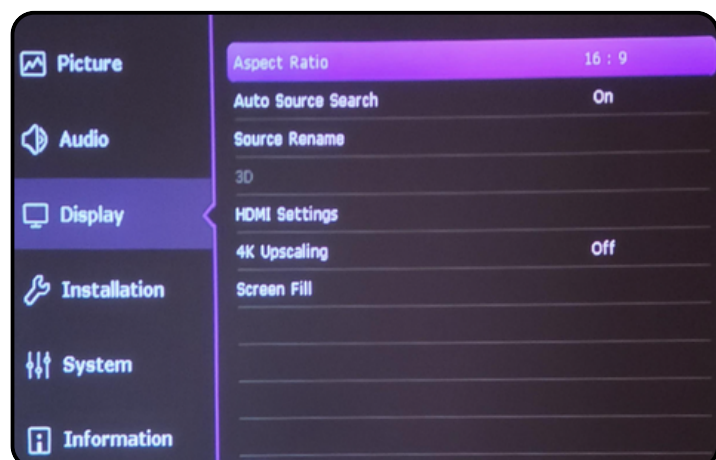


### 4. PROJECTOR SETTINGS

1. Turn on your Projector
2. Auto Screen Fit / Ok
3. Menu / Select Projector Position
4. Language: Select the desired language
5. Press Menu (On the remote) : Menu Type / Choose Advanced
6. Picture / Picture Mode: Select Golf



7. Display / Aspect Ratio / 16:9



## 5. PROJECTOR AJUSTEMENTS

Each environment is unique, so this section may require a bit more time and patience. Depending on your setup (screen size, projector distance, ceiling height, etc.), the adjustments needed can vary significantly from one user to another.

Take the time to explore and combine the different adjustments below to achieve an image perfectly suited to your installation. Don't hesitate to repeat the process multiple times to fine-tune the result to your preferences.

- Installation / Image Resize / Digital Shrink & Shift



- Installation / Geometry / Corner Fit :  
Fine-tune the image size and position for precise alignment



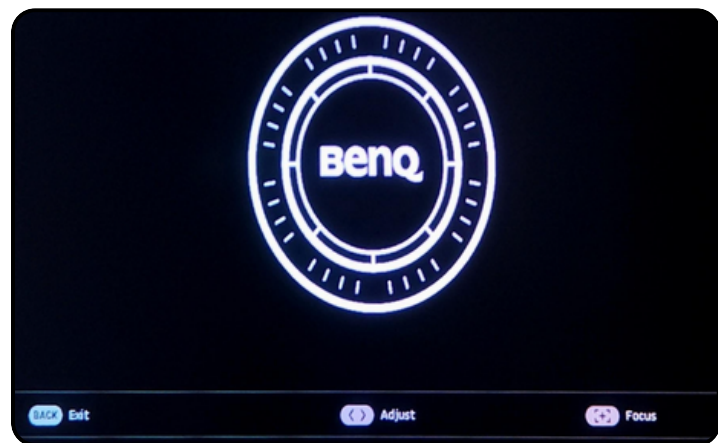


## 5. PROJECTOR AJUSTEMENTS (CONTINUED)

- Installation / Focus / Focus / Ok



- After the auto-focus, fine-tune the focus using the left and right arrows on the remote.



# BENQ AK700ST PROJECTOR AJUSTEMENTS WITHOUT MONITOR

## TABLE OF CONTENTS

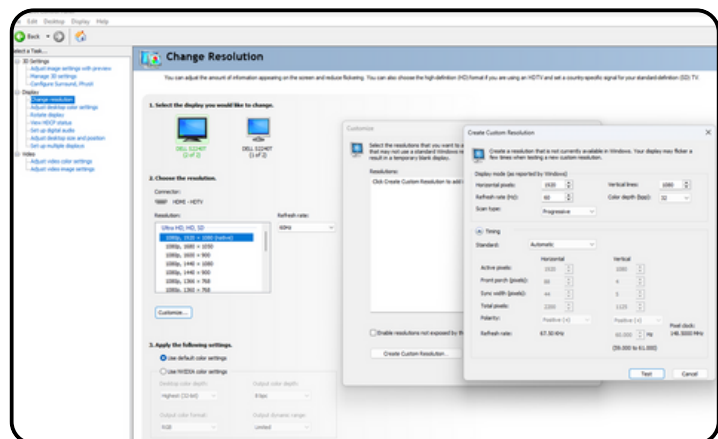
1. Select the correct HDMI Source
2. NVIDIA Control Panel (PC)
3. Windows Display Settings (PC)
4. Projector Settings
5. Projector Ajustements

## 1.SELECT THE CORRECT HDMI SOURCE

- 1.Turn on the projector and press the 'Source' button on the remote control.
- 2.Use the arrows to navigate to the appropriate HDMI input (HDMI 1 or HDMI 2) and press 'OK' to select.

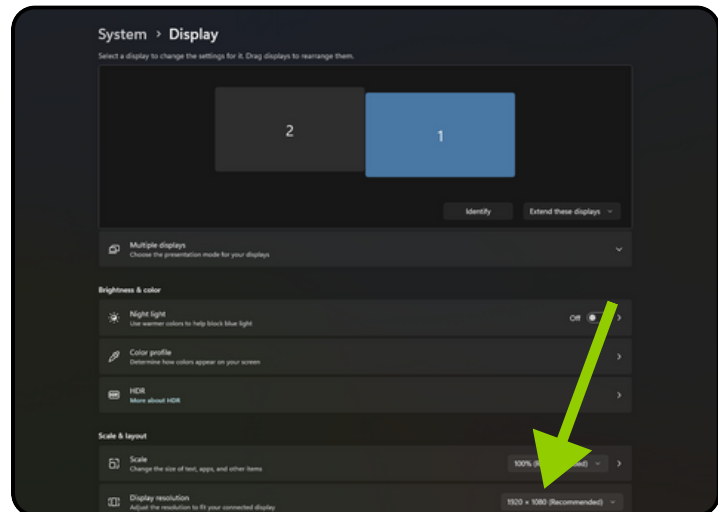
## 2.WINDOWS DISPLAY SETTINGS (PC)

1. Open the NVIDIA Control Panel
2. Click on Change resolution:  
Customise > Create custom resolution
3. Under Display mode (as reported by Windows), Change :
  - Horizontal pixels to 1547
  - Vertical Lines to 1080
4. Click on Test > Apply change > Yes
5. Click on Adjust desktop size and position:
6. Select "Full screen" (The projector must be turned on beforehand)
7. Change the Resolution to 1547 × 1080
8. Click "Apply" at the bottom right of the screen. Then "Yes" to "Apply Changes"



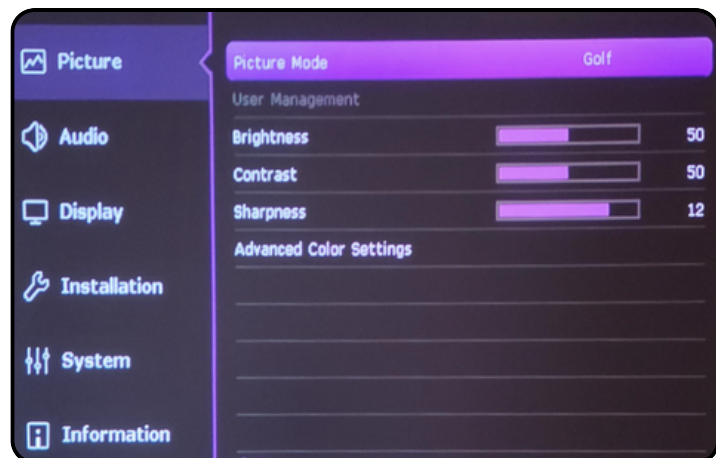
### 3. WINDOWS DISPLAY SETTINGS (PC)

1. Click Start > Settings
2. Go to System > Display
3. Make sure the display resolution is set to 1547 × 1080
4. If not, change it & Click "Yes" to keep these display setting

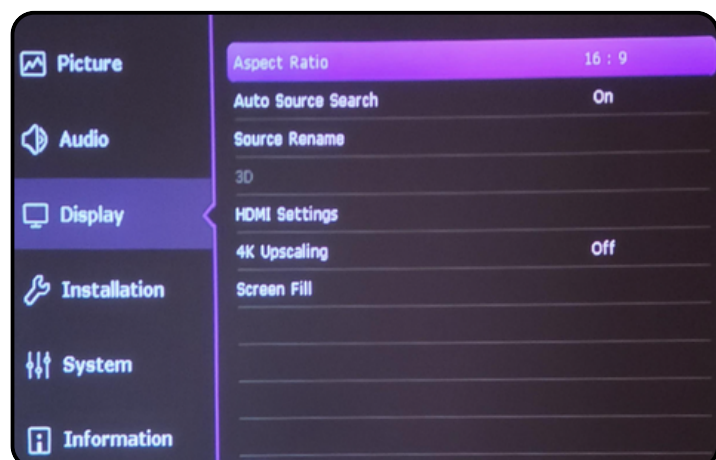


### 4. PROJECTOR SETTINGS

1. Turn on your Projector
2. Auto Screen Fit / Ok
3. Menu / Select Projector Position
4. Language: Select the desired language
5. Press Menu (On the remote) : Menu Type / Choose Advanced
6. Picture / Picture Mode: Select Golf



7. Display / Aspect Ratio / 16:9

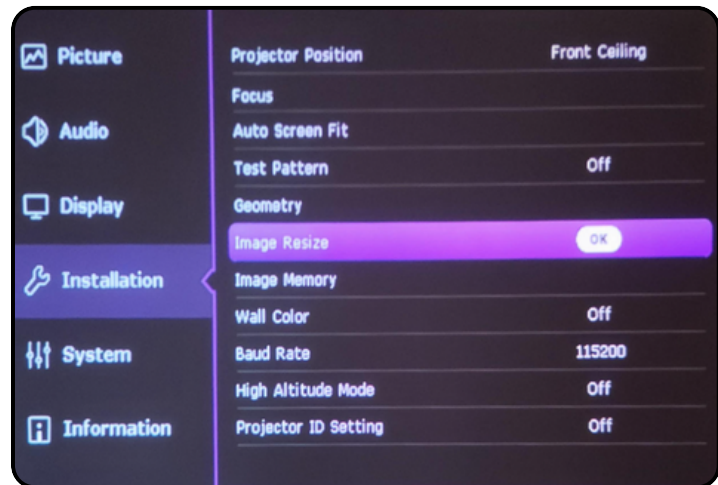


## 5. PROJECTOR AJUSTEMENTS

Each environment is unique, so this section may require a bit more time and patience. Depending on your setup (screen size, projector distance, ceiling height, etc.), the adjustments needed can vary significantly from one user to another.

Take the time to explore and combine the different adjustments below to achieve an image perfectly suited to your installation. Don't hesitate to repeat the process multiple times to fine-tune the result to your preferences.

- Installation / Image Resize / Digital Shrink & Shift



- Installation / Geometry / Corner Fit :  
Fine-tune the image size and position for precise alignment



5. PROJECTOR AJUSTEMENTS (CONTINUED)

- Installation / Focus / Focus / Ok

