



INSTALLATION GUIDE

SIMBOOTH 1

TABLE OF CONTENTS

Parts List 3-4

Structure assembly 5-7

Floor assembly 8-9

Half walls installation 9

Projector installation 10-11

Wire cover installation 12

Appendix A (projector position) 13

Appendix B (AH30ST adjustment with monitor) 14 -18

Appendix C (AH30ST adjustment without monitor) 19 -23

Appendix D (AK700ST adjustment with monitor) 24 -27

Appendix E (AK700ST adjustment without monitor) ... 28 -31



PARTS LIST

WALL PANELS

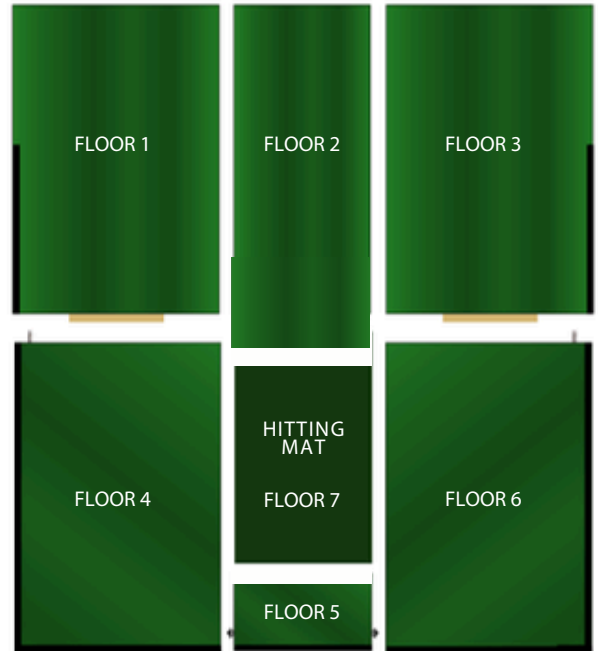
LEFT WALLS



RIGHT WALLS



FLOOR PANELS



CEILING PANELS



PARTS LIST

ACCESSOIRES

Bolt-01 (2x)



Wing nut (3x)



Washer (28x)



Nut (28x)



Bolt-02 (2x)



Bolt-03 (8x)



Black impact screen



Tees (10x)



Bolt-04 (2x)



Allen Key



Hitting mat



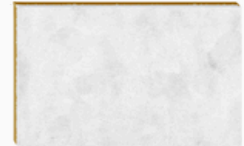
Scissor bar



Elevating bracket



Shim 1/2"



White projection screen



Shim 1/8"



OPTIONALS

Half-Walls
(2x)



Projector & Remote



Projector Beam



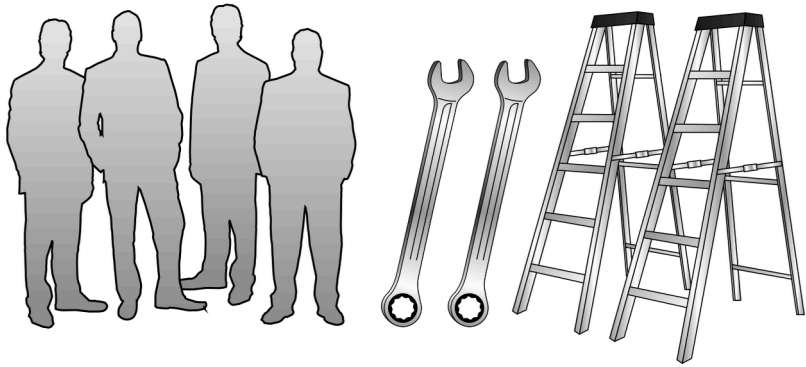
Wire Cover



END OF PARTS LIST

BEFORE STARTING

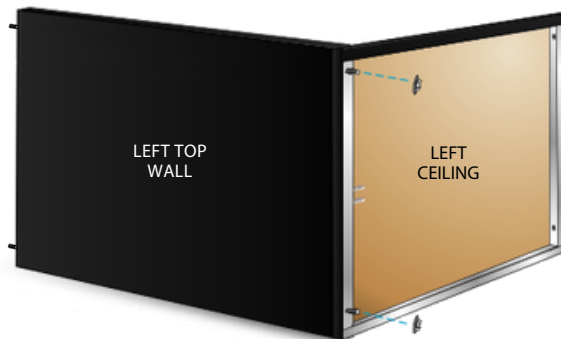
You will need 4 people, two ladders, and two 1/2" (13 mm) wrenches.



1

Attach the left top wall to the left ceiling with washers & nuts.

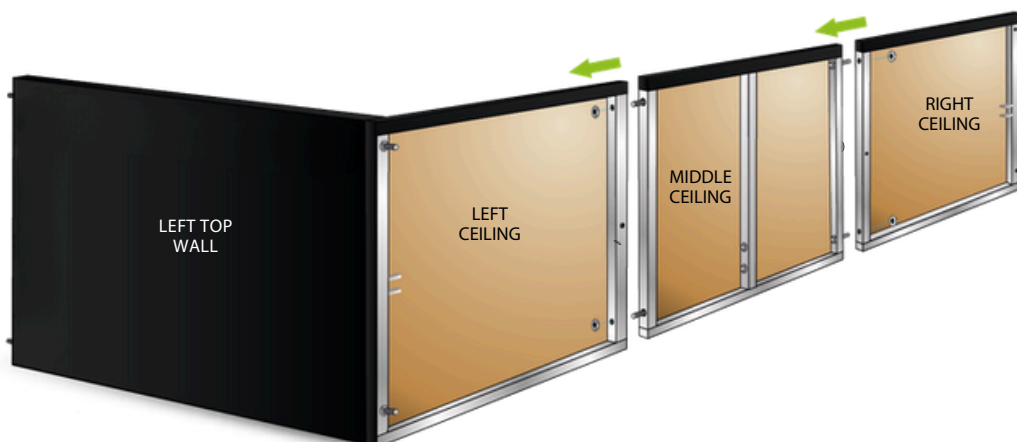
2x Washers
2x Nuts



2

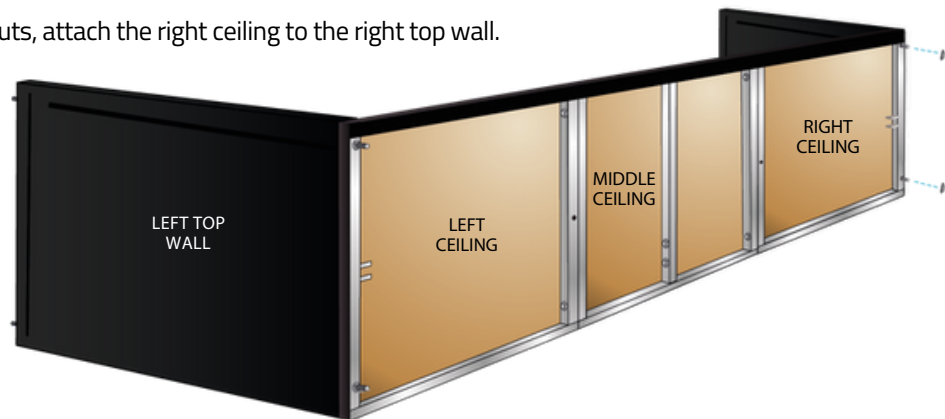
Using bolts-03, washers, and nuts, attach the middle ceiling to the left ceiling, then attach the right ceiling to the middle ceiling.

4x Bolt-03
4x Washers
4x Nuts



3

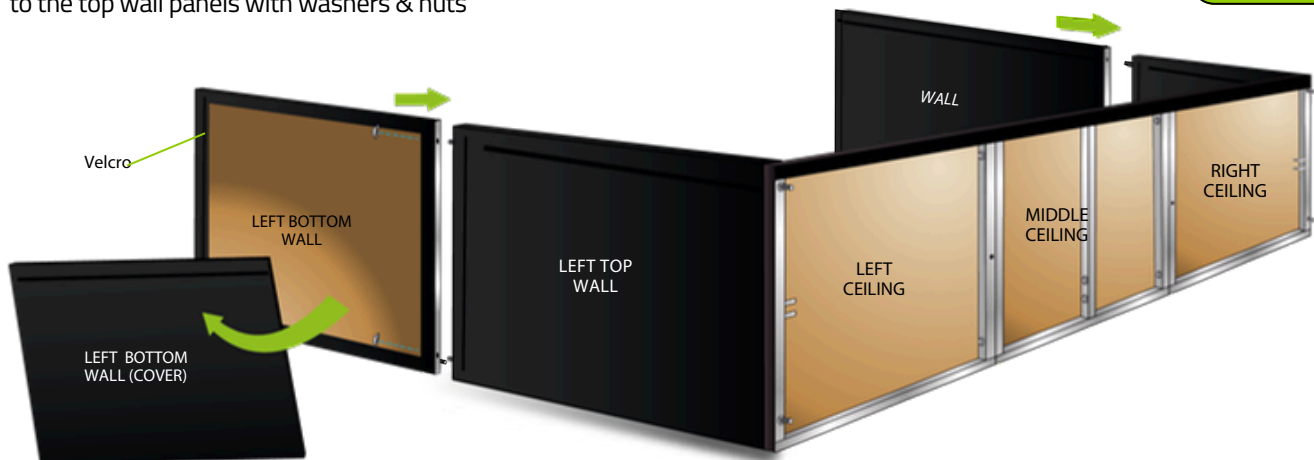
Using washers and nuts, attach the right ceiling to the right top wall.



2x Washers
2x Nuts

4

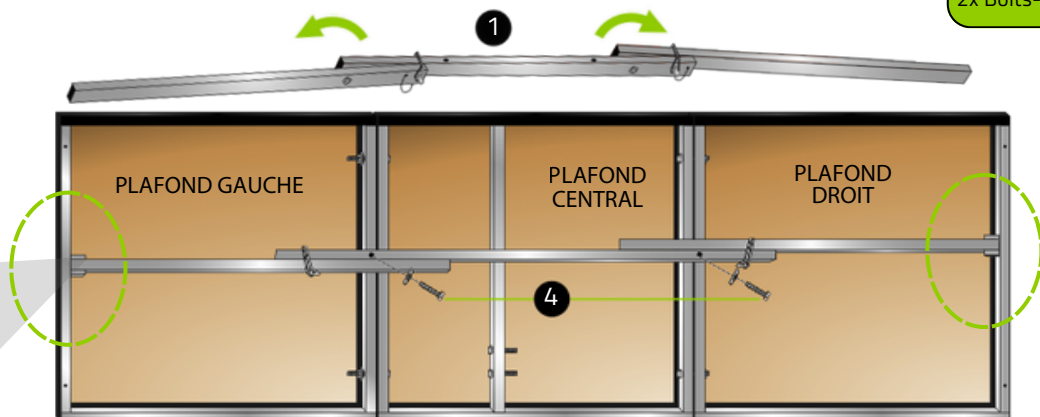
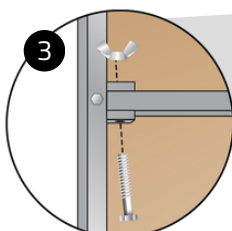
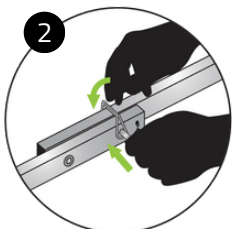
Remove the bottom wall covers, then attach the bottom wall panels to the top wall panels with washers & nuts



4x Washers
4x Nuts

5

(1) Unfold the scissor bar (2) and secure it with the safety pins. (3) Attach the scissor bar to both ends of the structure using wing nuts and bolts-02. (4) Attach the scissor bar to the center of the structure using washers and bolts-01.

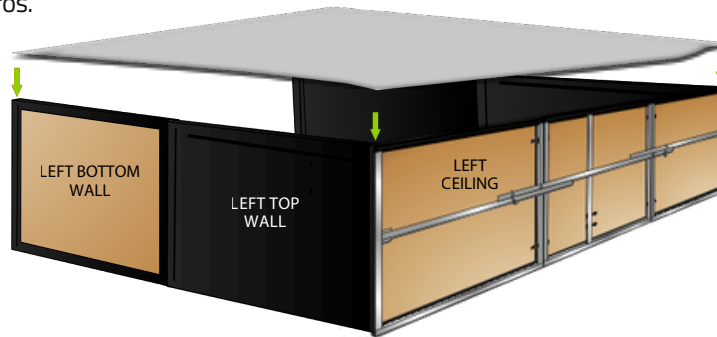


2x Washers
2x Wing Nuts
2x Bolts-01
2x Bolts-02

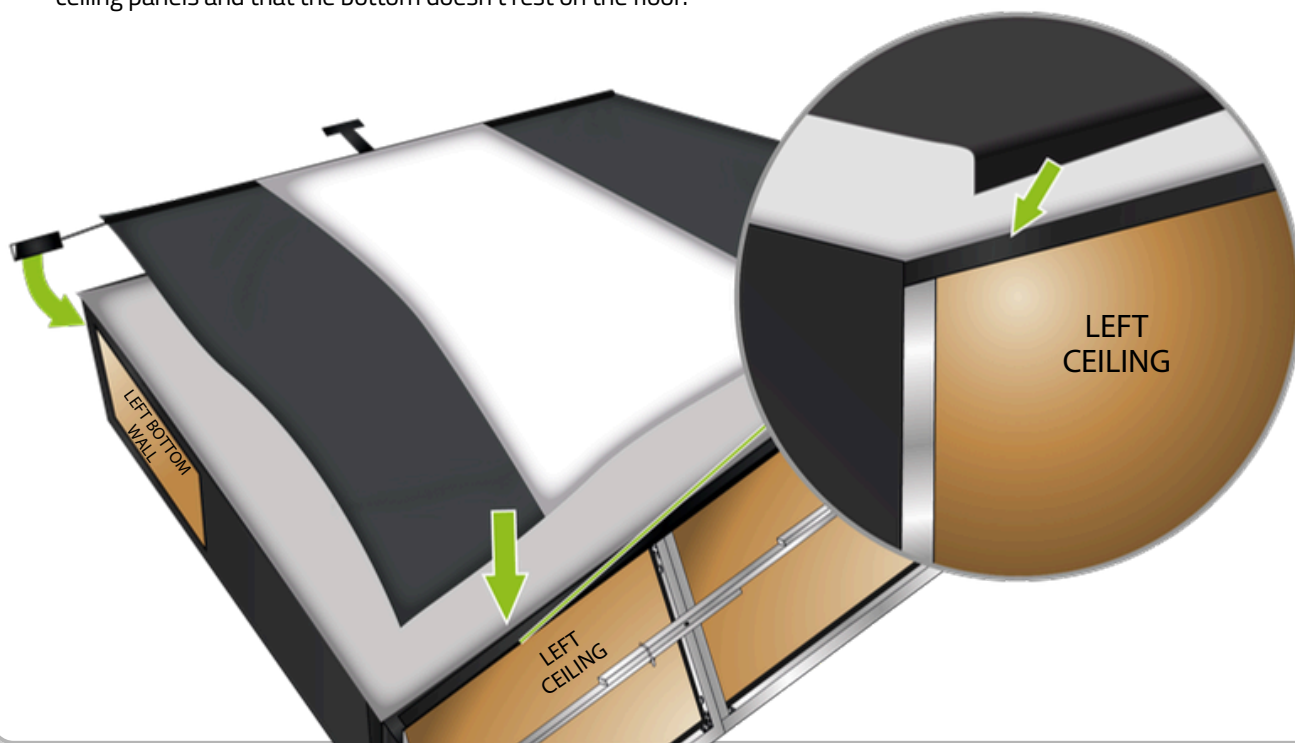
IT IS IMPORTANT TO COMPLETE THIS STEP BEFORE LIFTING THE STRUCTURE.

6

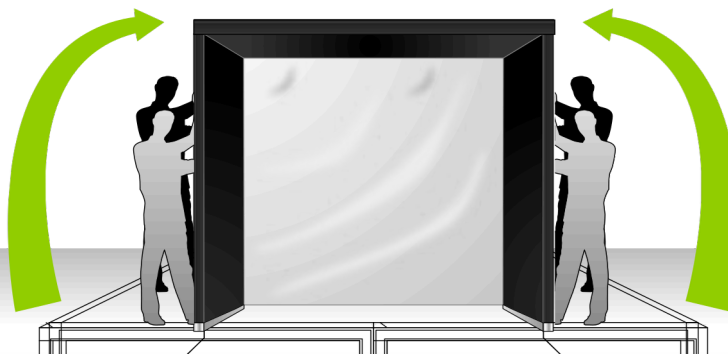
Attach the white projection screen to the structure using the velcros.


7

Attach the black impact screen over the white projection screen using the velcros. Make sure it is attached to the top velcros on the ceiling panels and that the bottom doesn't rest on the floor.


8

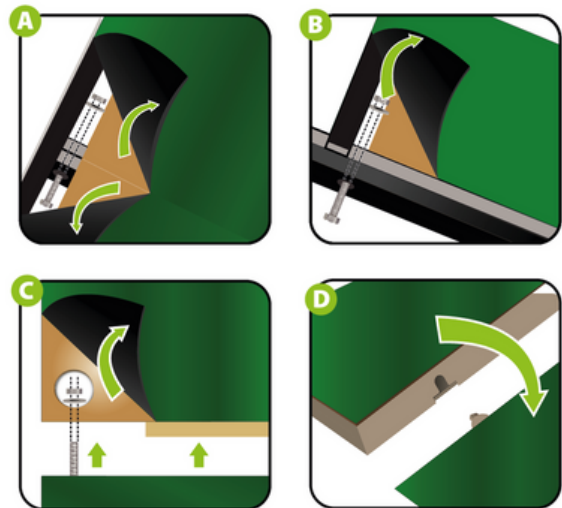
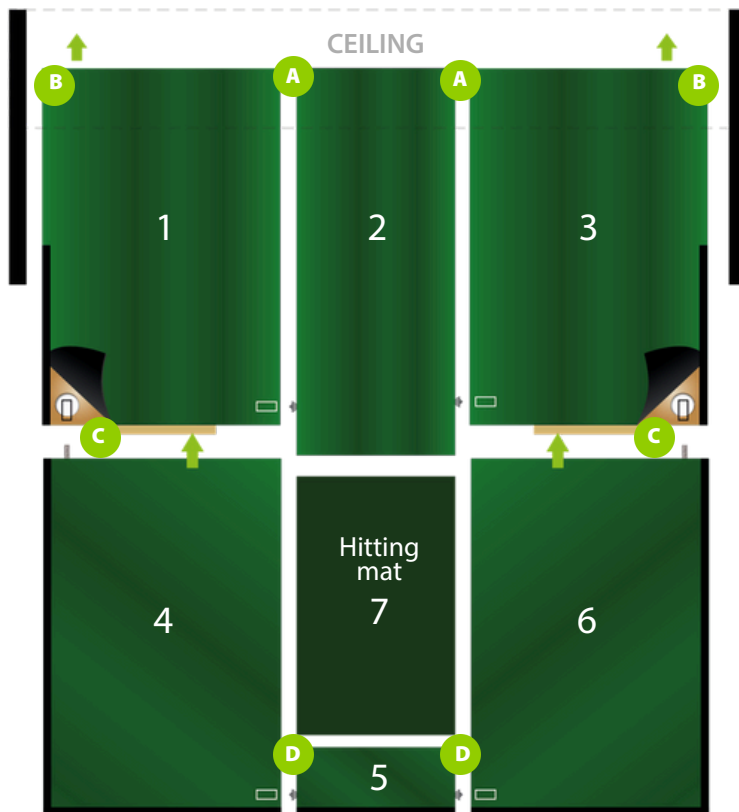
Lift the structure with 4 people.



1

Assemble the floor sections in order (1 to 7). For A and B, you will need bolts-03, washers, and nuts. For C, you will need washers and nuts. Use the shim to adjust the height of the hitting mat.

6x Washers
6x Nuts
4x Bolts-03



2

Step 1

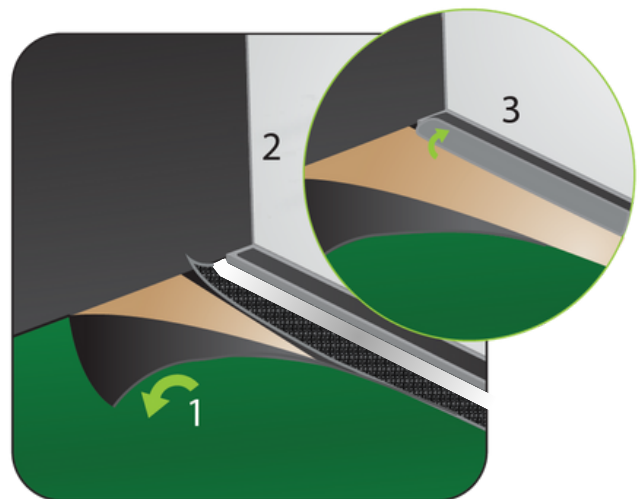
Lift green carpet.

Step 2

Stretch the white projection screen behind and under the aluminum bar and reach for it through the space.

Step 3

Attach it on the first half of the velcro on the aluminum bar.



3

Step 1

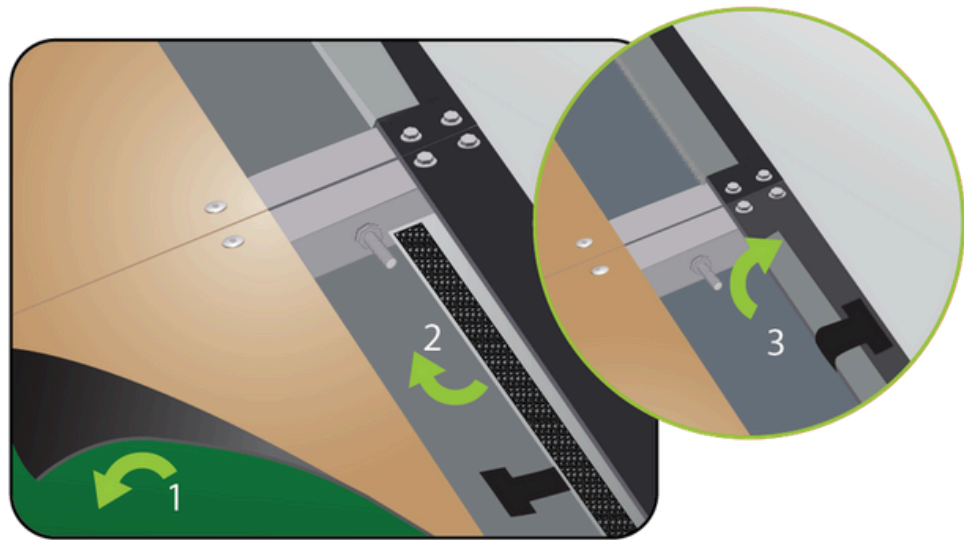
Lift green carpet.

Step 2

Stretch the black impact screen behind and under the aluminum bar and reach for it through the space.

Step 3

Attach the T on the remaining half.



END OF STRUCTURE FLOOR INSTALLATION SECTION

HALF WALLS INSTALLATION

4x Washers
4x Nuts

Simply cut through the black carpet to access the pre-drill holes and insert the half-walls. Attach the half-walls to the structure with washers and nuts. Then, attach the removable panel on the bottom walls with the velcro.



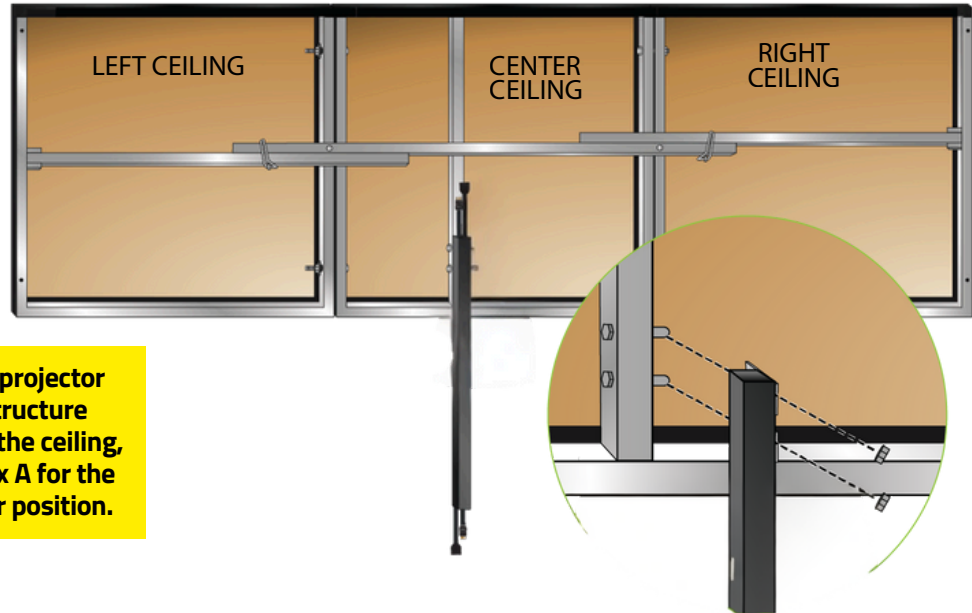
1

PROJECTOR BEAM INSTALLATION (OPTIONAL)

Attach the projector beam to the ceiling structure with washers and nuts.

2x Washers
2x Nuts

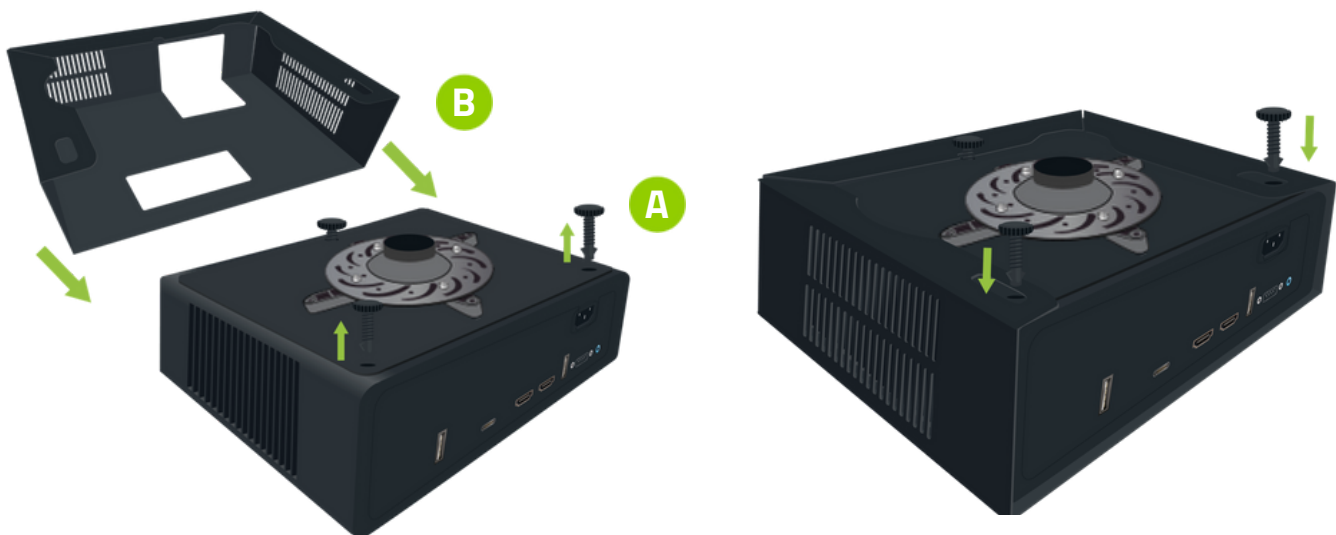
If you are not using the projector beam attached to the structure and plan to install it on the ceiling, please refer to Appendix A for the recommended projector position.



2

PROJECTOR ENCLOSURE INSTALLATION (OPTIONAL)

(A) To install the projector enclosure, first remove the rear adjuster feet of the projector completely, and slightly loosen the front adjustable foot without removing it. **(B)** Next, insert the projector into the enclosure, making sure the lens is properly aligned with the designated opening. **(C)** Finally, reinstall the removed adjustable feet through the holes of the enclosure to secure the projector in place, and re-tighten the front adjustable foot.



3

PROJECTOR INSTALLATION (OPTIONAL)

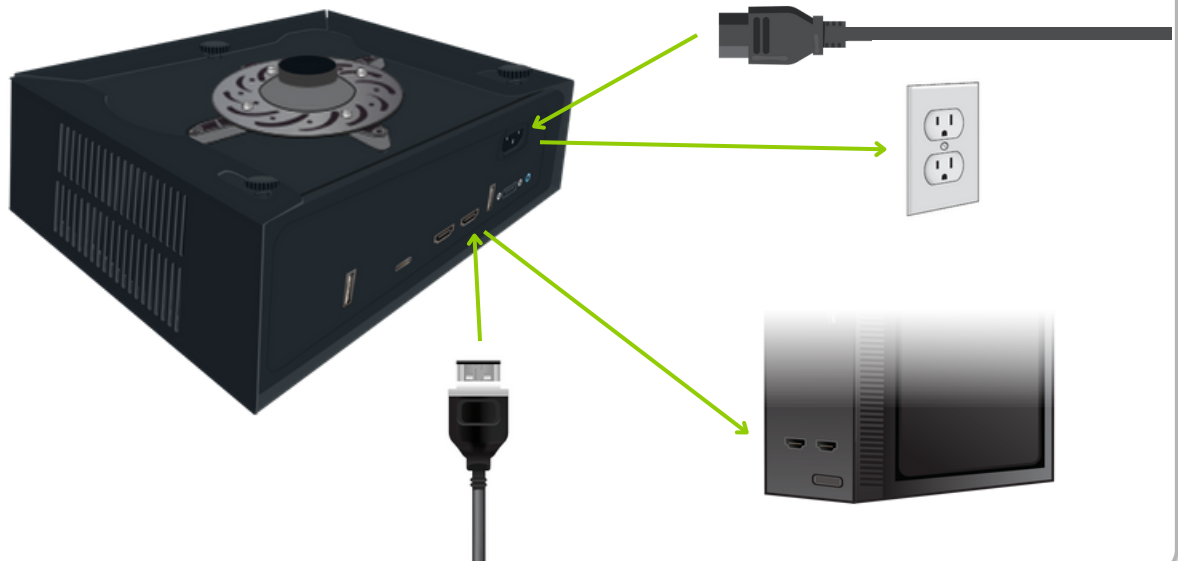
Attach the projector on the projector mount. Refer to the instruction sheet inside the projector box.



4

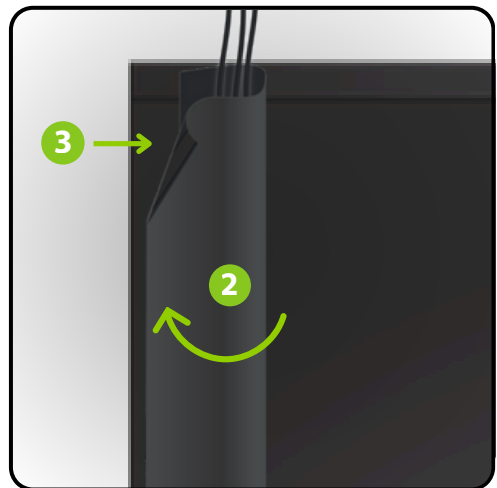
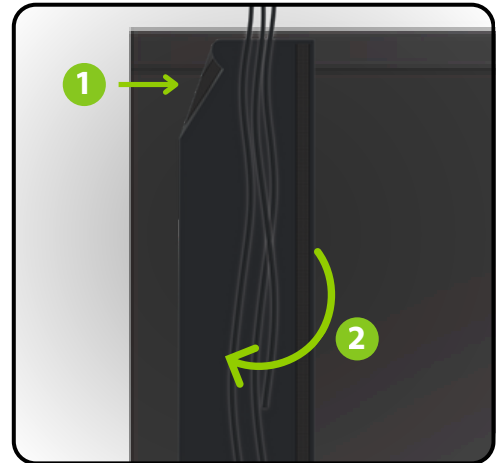
PROJECTOR CABLE CONNECTIONS

Plug the HDMI cable to the HDMI port on your projector and on your PC. Connect the power cable to the ground terminal and your electrical outlet. **Refer to Appendix B, C, D or E for your projector adjustments.**



WIRE COVER

Stick one side of the wire cover to the structure using the Velcro. Gather your wires inside the wire cover and, forming a loop over the wires, stick the second side of the wire cover just in front of your first Velcro.



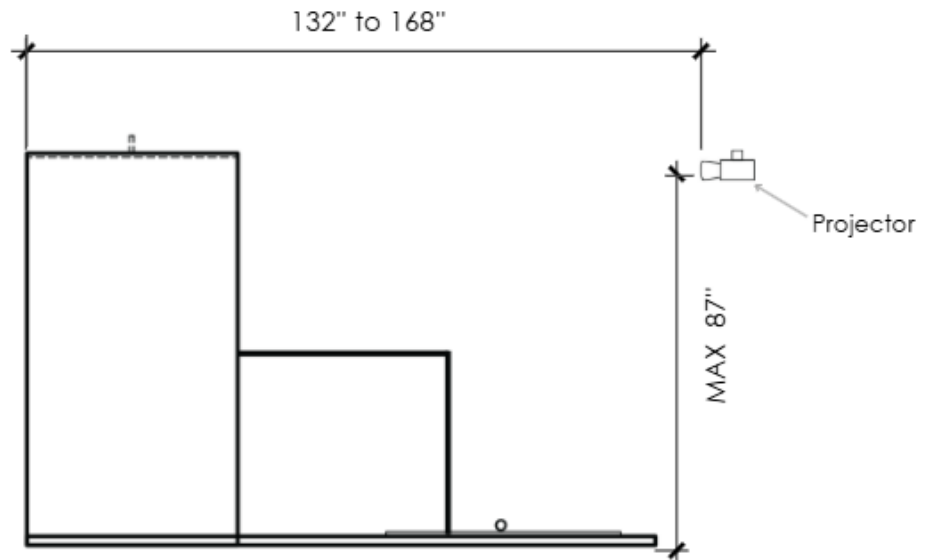
1

PROJECTOR PLACEMENT WHEN NOT USING THE PROJECTOR BEAM

Minimum projector distance:
132" (335.3 cm)
Screen to lens

Maximum projector distance:
168" (426.7 cm)
Screen to lens

Projector Height:
87" (221 cm)
Floor to the middle of the lens



BENQ AH30ST PROJECTOR AJUSTEMENTS WITH MONITOR

TABLE OF CONTENTS

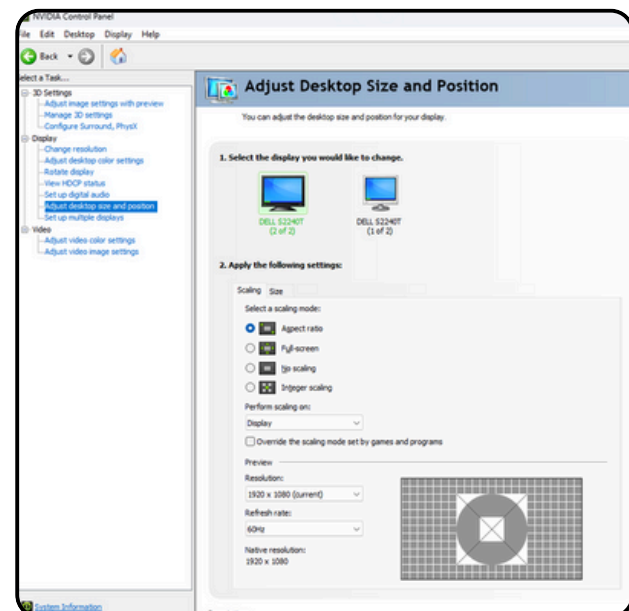
- | | |
|-----------------------------------|--------------------------|
| 1. Select the correct HDMI Source | 4. Projector Settings |
| 2. NVIDIA Control Panel (PC) | 5. Projector Ajustements |
| 3. Windows Display Settings (PC) | |

1.SELECT THE CORRECT HDMI SOURCE

- 1.Turn on the projector and press the 'Source' button on the remote control.
- 2.Use the arrows to navigate to the appropriate HDMI input (HDMI 1 or HDMI 2) and press 'OK' to select.

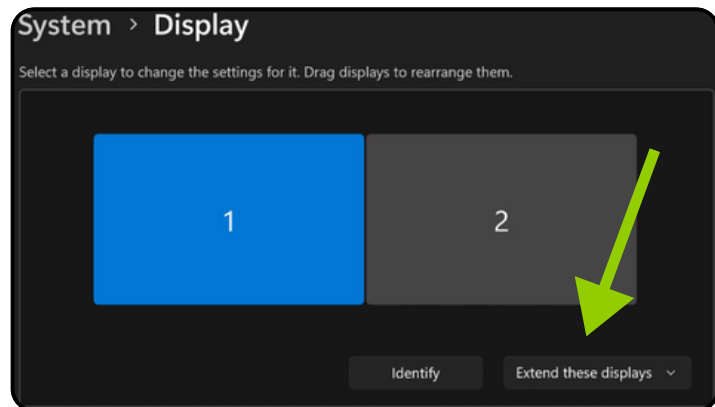
2.WINDOWS DISPLAY SETTINGS (PC)

1. Open the NVIDIA Control Panel & make sure the projector is turned on.
2. Click on "Adjust desktop size and position"
3. Select your monitor
4. Select "Aspect ratio"
5. Keep the resolution at 1920 × 1080
6. Select your projector
7. Select "Aspect ratio"
8. Keep the resolution at 1920 × 1080
9. Click "Apply" at the bottom right of the screen. Then "Yes" to "Apply Changes"



3. WINDOWS DISPLAY SETTINGS (PC)

1. Click Start > Settings
2. Go to System > Display
3. If both screens are detected, you will see two numbered rectangles (1 and 2)
4. Click on Extend these Display (menu below and to the right of the 2 screens)
5. Select "Duplicate these displays"
6. Click "Keep Change"
7. Make sure the display resolution is set to 1920 x 1080



4. PROJECTOR SETTINGS

1. Language: Select the desired language
2. Menu (On the remote) : Menu Type > Choose Advanced
3. Picture> Picture Mode: Select Golf

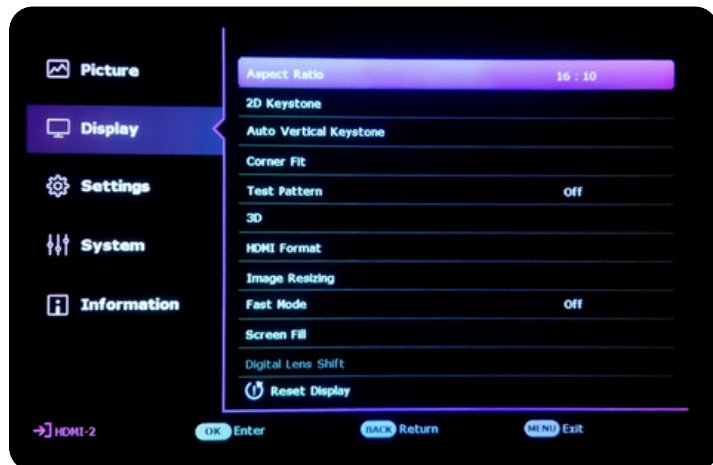


4. PROJECTOR SETTINGS (CONTINUED)

4. Display > Screen Fill: Choose 16:9 (1920 × 1080)



5. Display > Aspect Ratio : Select 16:10



5. PROJECTOR AJUSTEMENTS

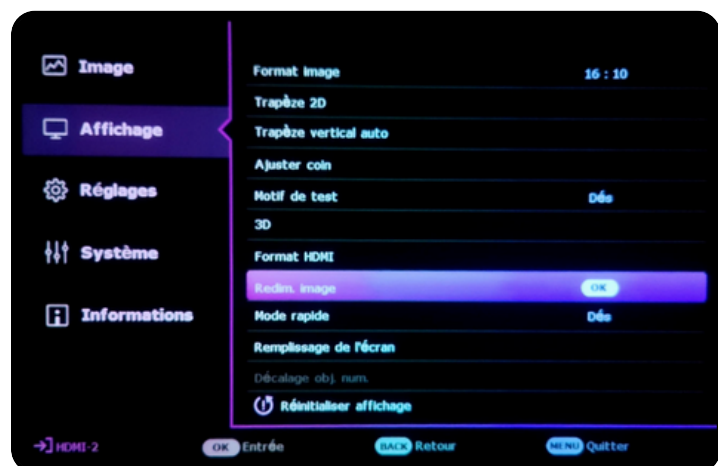
Each environment is unique, so this section may require a bit more time and patience. Depending on your setup (screen size, projector distance, ceiling height, etc.), the adjustments needed can vary significantly from one user to another.

Take the time to explore and combine the different adjustments below to achieve an image perfectly suited to your installation. Don't hesitate to repeat the process multiple times to fine-tune the result to your preferences.

- Zoom: Adjust the image size using the zoom dial under the lens

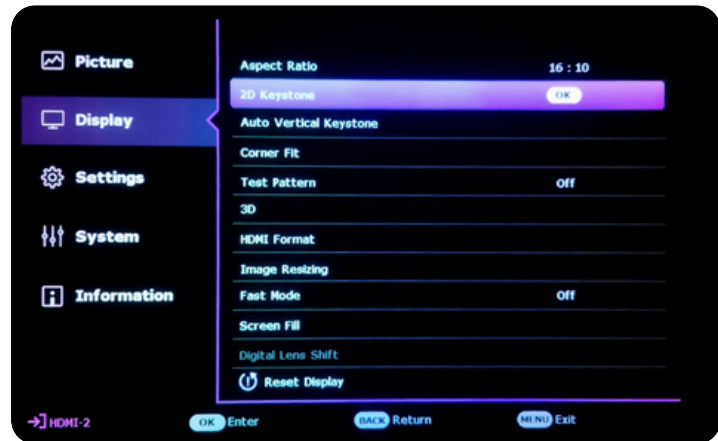


- Display > Image Resizing: Use Digital Shrink & Shift → Adjust the image so that it slightly exceeds the desired size on all sides



5. PROJECTOR AJUSTEMENTS (CONTINUED)

- Display > 2D Keystone: Correct vertical tilt and horizontal shift of the image



- Display > Corner Fit: Fine-tune the image size and position for precise alignment



- Focus: Adjust image sharpness using the focus dial under the lens



BENQ AH30ST PROJECTOR AJUSTEMENTS **WITHOUT MONITOR**

TABLE OF CONTENTS

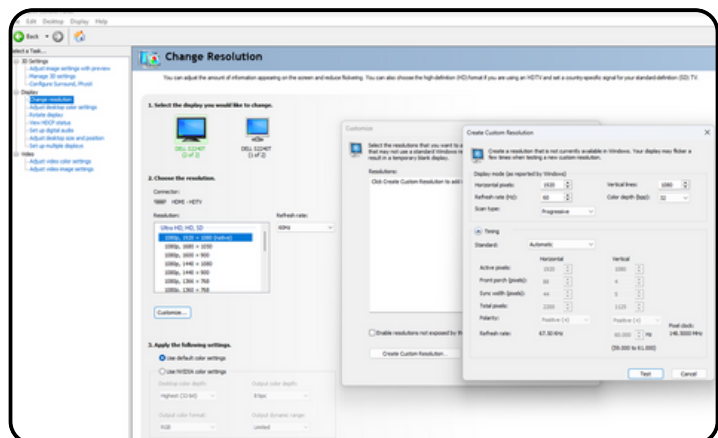
1. Select the correct HDMI Source
2. NVIDIA Control Panel (PC)
3. Windows Display Settings (PC)
4. Projector Settings
5. Projector Ajustements

1.SELECT THE CORRECT HDMI SOURCE

- 1.Turn on the projector and press the 'Source' button on the remote control.
- 2.Use the arrows to navigate to the appropriate HDMI input (HDMI 1 or HDMI 2) and press 'OK' to select.

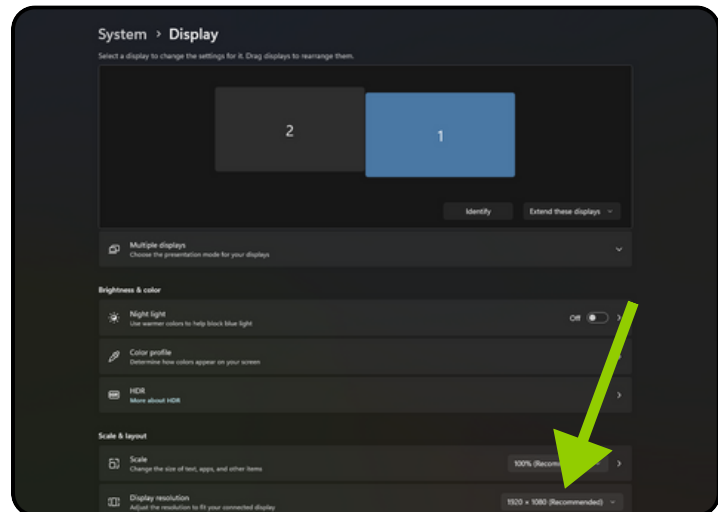
2.WINDOWS DISPLAY SETTINGS (PC)

1. Open the NVIDIA Control Panel
2. Click on Change resolution:
Customise > Create custom resolution
3. Under Display mode (as reported by Windows), Change :
 - Horizontal pixels to 1547
 - Vertical Lines to 1080
4. Click on Test > Apply change > Yes
5. Click on Adjust desktop size and position:
6. Select "Aspect ratio" (The projector must be turned on beforehand)
7. Change the Resolution to 1547 × 1080
8. Click "Apply" at the bottom right of the screen. Then "Yes" to "Apply Changes"



3. WINDOWS DISPLAY SETTINGS (PC)

1. Click Start > Settings
2. Go to System > Display
3. Make sure the display resolution is set to 1547 × 1080
4. If not, change it & Click "Yes" to Keep these display setting



4. PROJECTOR SETTINGS

1. Language: Select the desired language
2. Menu (On the remote) : Menu Type > Choose Advanced
3. Picture> Picture Mode: Select Golf

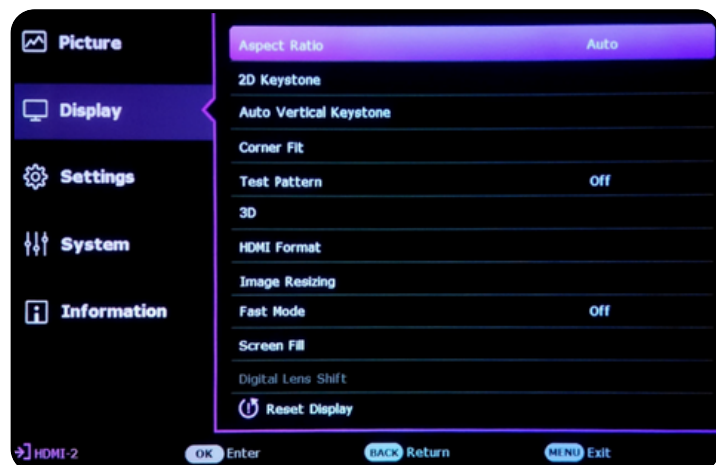


4. PROJECTOR SETTINGS (CONTINUED)

4. Display > Screen Fill: Choose 16:9 (1920 × 1080)



5. Display > Aspect Ratio : Select "Auto"



5. PROJECTOR AJUSTEMENTS

Each environment is unique, so this section may require a bit more time and patience. Depending on your setup (screen size, projector distance, ceiling height, etc.), the adjustments needed can vary significantly from one user to another.

Take the time to explore and combine the different adjustments below to achieve an image perfectly suited to your installation. Don't hesitate to repeat the process multiple times to fine-tune the result to your preferences.

- Zoom: Adjust the image size using the zoom dial under the lens

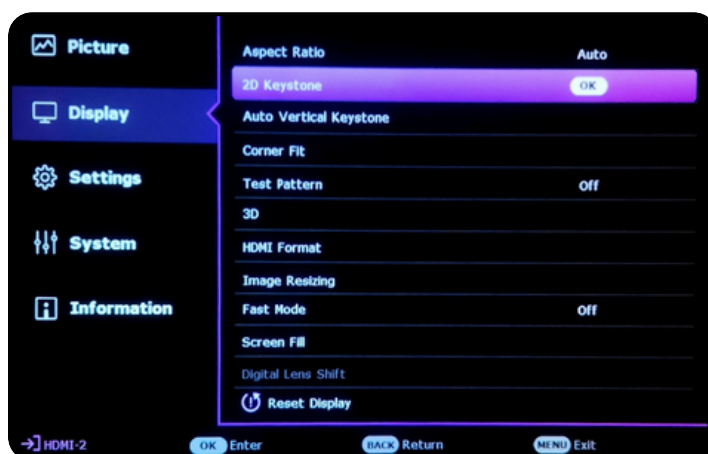


- Display > Image Resizing: Use Digital Shrink & Shift → Adjust the image so that it slightly exceeds the desired size on all sides



5. PROJECTOR AJUSTEMENTS (CONTINUED)

- Display > 2D Keystone: Correct vertical tilt and horizontal shift of the image



- Display > Corner Fit: Fine-tune the image size and position for precise alignment



- Focus: Adjust image sharpness using the focus dial under the lens



BENQ AK700ST PROJECTOR AJUSTEMENTS **WITH MONITOR**

TABLE OF CONTENTS

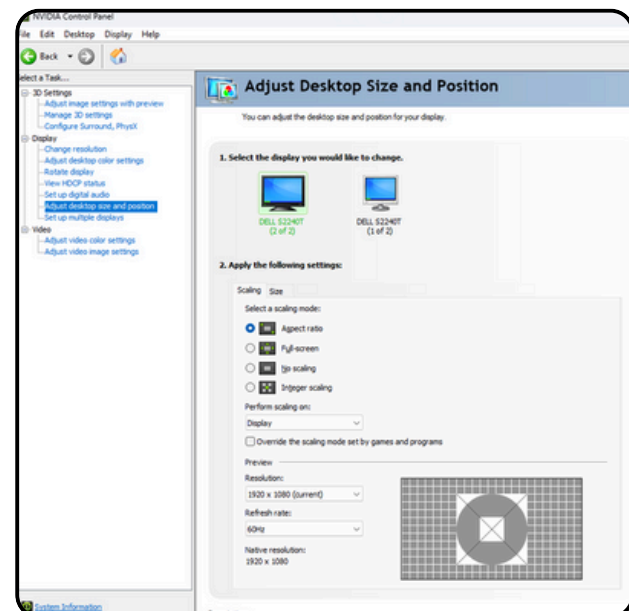
- | | |
|-----------------------------------|--------------------------|
| 1. Select the correct HDMI Source | 4. Projector Settings |
| 2. NVIDIA Control Panel (PC) | 5. Projector Ajustements |
| 3. Windows Display Settings (PC) | |

1.SELECT THE CORRECT HDMI SOURCE

- 1.Turn on the projector and press the 'Source' button on the remote control.
- 2.Use the arrows to navigate to the appropriate HDMI input (HDMI 1 or HDMI 2) and press 'OK' to select.

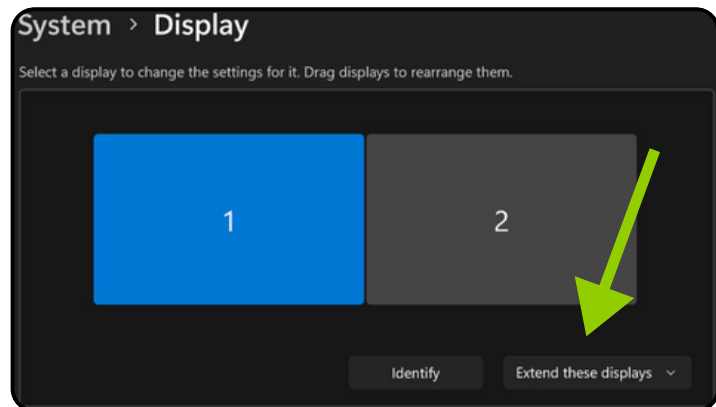
2.WINDOWS DISPLAY SETTINGS (PC)

1. Open the NVIDIA Control Panel & make sure the projector is turned on.
2. Click on "Adjust desktop size and position"
3. Select your monitor
4. Select "Aspect ratio"
5. Keep the resolution at 1920 × 1080
6. Select your projector
7. Select "Aspect ratio"
8. Keep the resolution at 1920 × 1080
9. Click "Apply" at the bottom right of the screen. Then "Yes" to "Apply Changes"



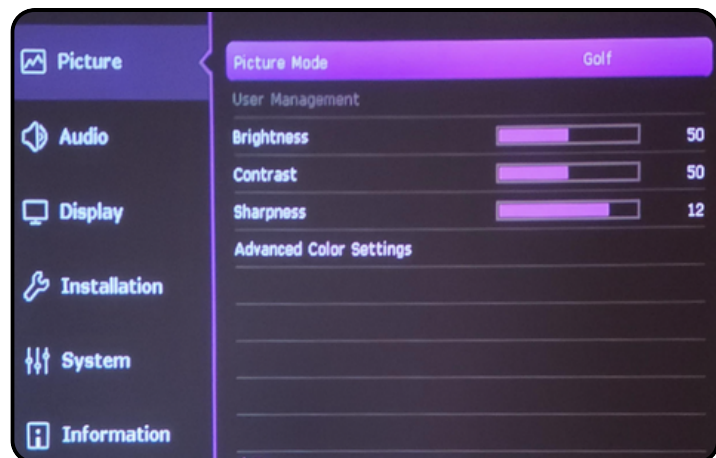
3. WINDOWS DISPLAY SETTINGS (PC)

1. Click Start > Settings
2. Go to System > Display
3. If both screens are detected, you will see two numbered rectangles (1 and 2)
4. Click on Extend these Display (menu below and to the right of the 2 screens)
5. Select "Duplicate these displays"
6. Click "Keep Change"
7. Make sure the display resolution is set to 1920 x 1080

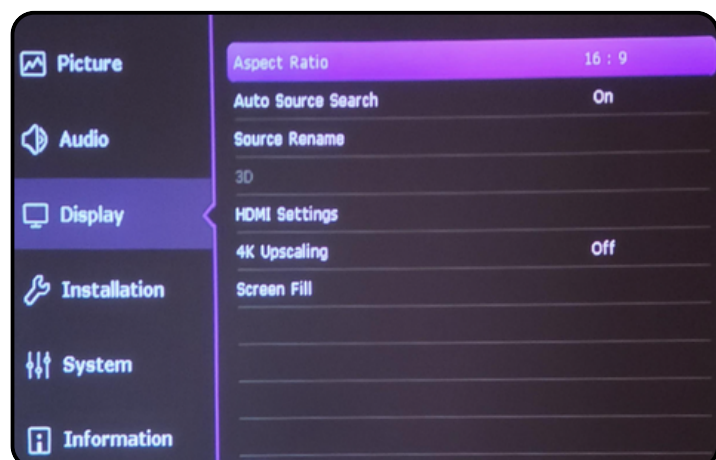


4. PROJECTOR SETTINGS

1. Turn on your Projector
2. Auto Screen Fit / Ok
3. Menu / Select Projector Position
4. Language: Select the desired language
5. Press Menu (On the remote) : Menu Type / Choose Advanced
6. Picture / Picture Mode: Select Golf



7. Display / Aspect Ratio / 16:9



5. PROJECTOR AJUSTEMENTS

Each environment is unique, so this section may require a bit more time and patience. Depending on your setup (screen size, projector distance, ceiling height, etc.), the adjustments needed can vary significantly from one user to another.

Take the time to explore and combine the different adjustments below to achieve an image perfectly suited to your installation. Don't hesitate to repeat the process multiple times to fine-tune the result to your preferences.

- Installation / Image Resize / Digital Shrink & Shift

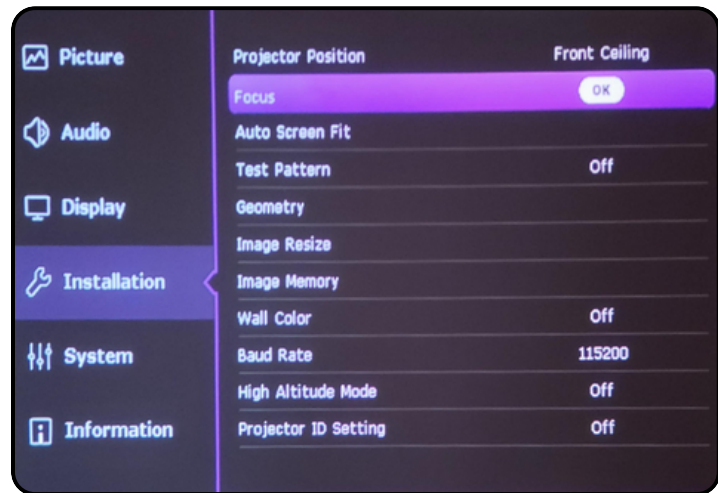


- Installation / Geometry / Corner Fit :
Fine-tune the image size and position for precise alignment

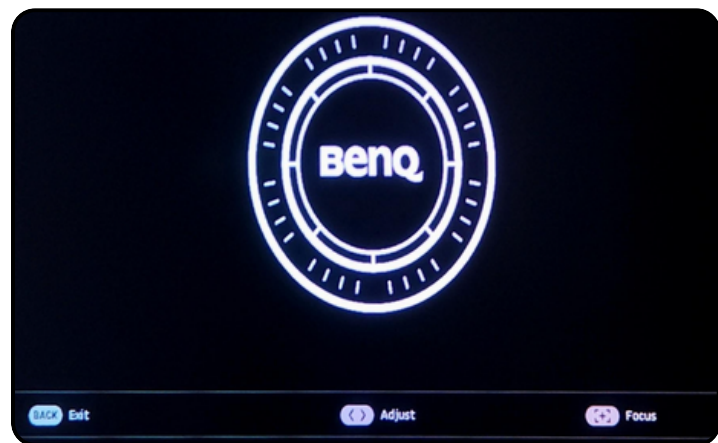


5. PROJECTOR AJUSTEMENTS (CONTINUED)

- Installation / Focus / Focus / Ok



- After the auto-focus, fine-tune the focus using the left and right arrows on the remote.



BENQ AK700ST PROJECTOR AJUSTEMENTS WITHOUT MONITOR

TABLE OF CONTENTS

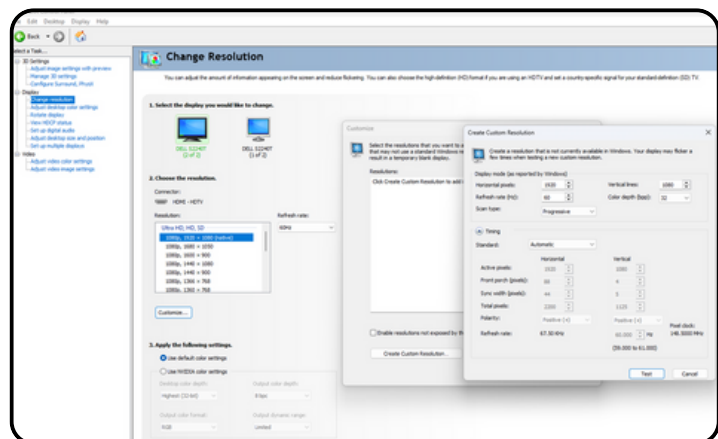
1. Select the correct HDMI Source
2. NVIDIA Control Panel (PC)
3. Windows Display Settings (PC)
4. Projector Settings
5. Projector Ajustements

1.SELECT THE CORRECT HDMI SOURCE

- 1.Turn on the projector and press the 'Source' button on the remote control.
- 2.Use the arrows to navigate to the appropriate HDMI input (HDMI 1 or HDMI 2) and press 'OK' to select.

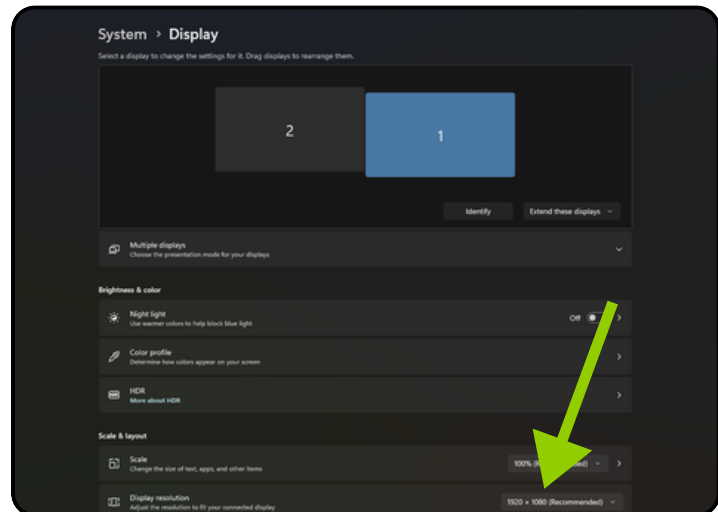
2.WINDOWS DISPLAY SETTINGS (PC)

1. Open the NVIDIA Control Panel
2. Click on Change resolution:
Customise > Create custom resolution
3. Under Display mode (as reported by Windows), Change :
 - Horizontal pixels to 1547
 - Vertical Lines to 1080
4. Click on Test > Apply change > Yes
5. Click on Adjust desktop size and position:
6. Select "Full screen" (The projector must be turned on beforehand)
7. Change the Resolution to 1547 × 1080
8. Click "Apply" at the bottom right of the screen. Then "Yes" to "Apply Changes"



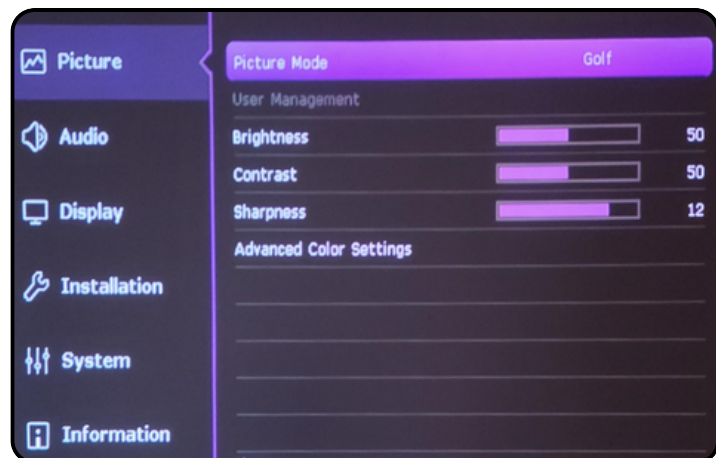
3. WINDOWS DISPLAY SETTINGS (PC)

1. Click Start > Settings
2. Go to System > Display
3. Make sure the display resolution is set to 1547 × 1080
4. If not, change it & Click "Yes" to keep these display setting

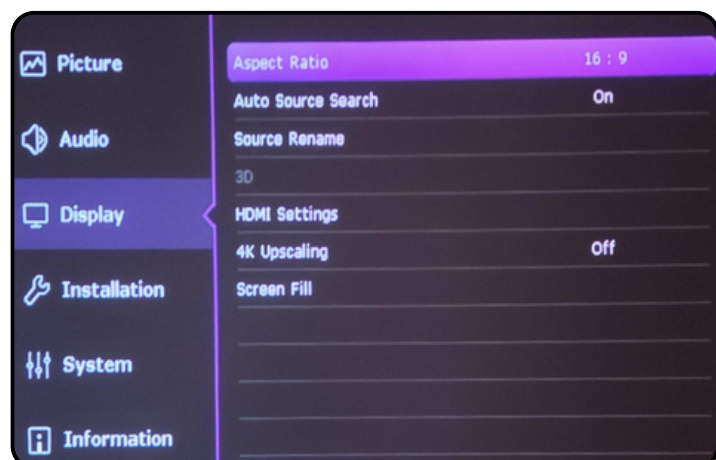


4. PROJECTOR SETTINGS

1. Turn on your Projector
2. Auto Screen Fit / Ok
3. Menu / Select Projector Position
4. Language: Select the desired language
5. Press Menu (On the remote) : Menu Type / Choose Advanced
6. Picture / Picture Mode: Select Golf



7. Display / Aspect Ratio / 16:9

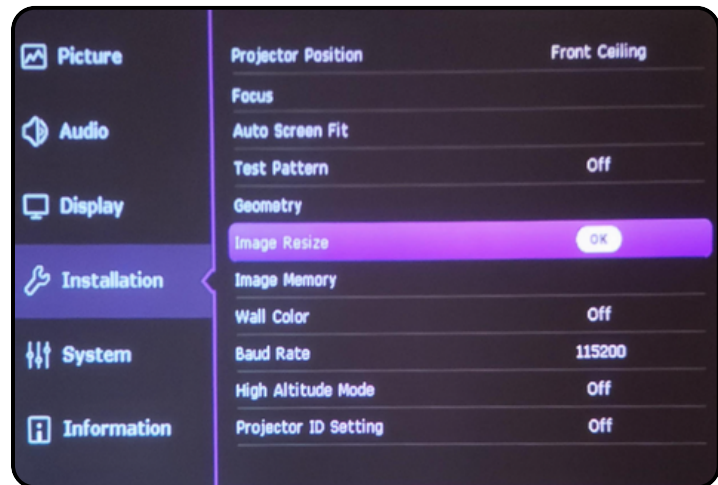


5. PROJECTOR AJUSTEMENTS

Each environment is unique, so this section may require a bit more time and patience. Depending on your setup (screen size, projector distance, ceiling height, etc.), the adjustments needed can vary significantly from one user to another.

Take the time to explore and combine the different adjustments below to achieve an image perfectly suited to your installation. Don't hesitate to repeat the process multiple times to fine-tune the result to your preferences.

- Installation / Image Resize / Digital Shrink & Shift



- Installation / Geometry / Corner Fit :
Fine-tune the image size and position for precise alignment



5. PROJECTOR AJUSTEMENTS (CONTINUED)

- Installation / Focus / Focus / Ok

