



# INSTALLATION GUIDE

SIMBOOTH 1

# TABLE OF CONTENTS

Parts list ..... 3-4

Structure installation ..... 5-7

Floor installation ..... 8-9

Half walls installation ..... 9

Electronics installation ..... 10-11

Cable connections ..... 12

Appendix A ..... 13

Appendix B ..... 14-18

Appendix C ..... 19-23

Appendix D ..... 24-27

Appendix E ..... 28-31



# PARTS LIST

## WALL PANELS

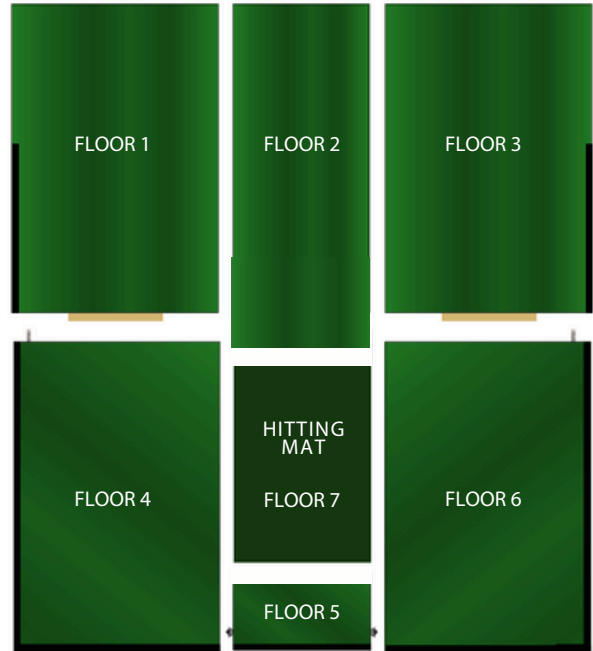
### LEFT WALLS



### RIGHT WALLS



## FLOOR PANELS



## CEILING PANELS



# PARTS LIST

## ACCESSORIES

Bolt-02



2" (2x)

Wing Nuts



(2x)

Washer



(32x)

Nuts



(26x)

Bolt-01



3-1/2" (2x)

Black impact screen



Tees (10x)



Bolt-03



3-1/2" (8x)

Bolt-04



2" (2x)

Allen Key



Scissor Bar



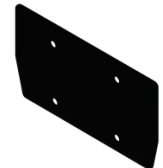
White screen



Hitting mat



Elevating bracket



## OPTIONALS

Half-Walls  
(2x)



Projector & Remote



Projector Beam



Wire Cover

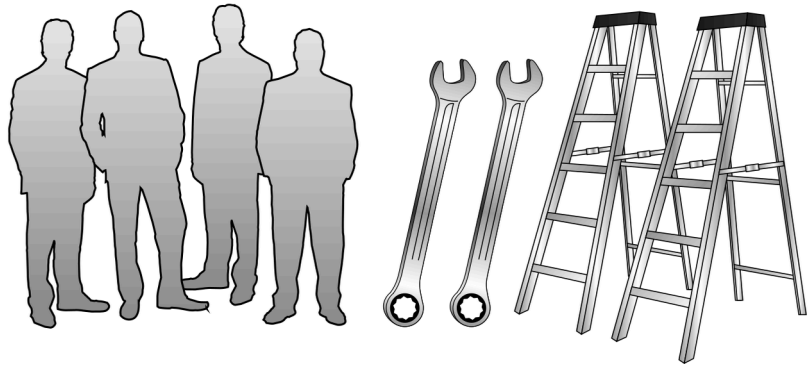


END OF PARTS LIST



### BEFORE STARTING

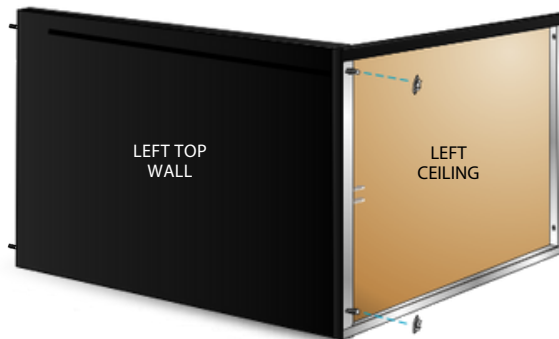
You will need 4 people, two ladders, and two 1/2" wrenches.



1

Fix the left top wall to the left ceiling with washers & nuts.

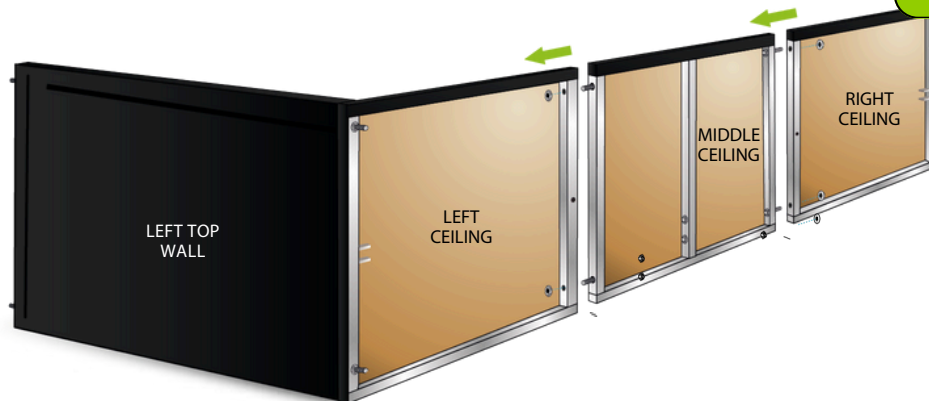
2x Washers  
2x Nuts



2

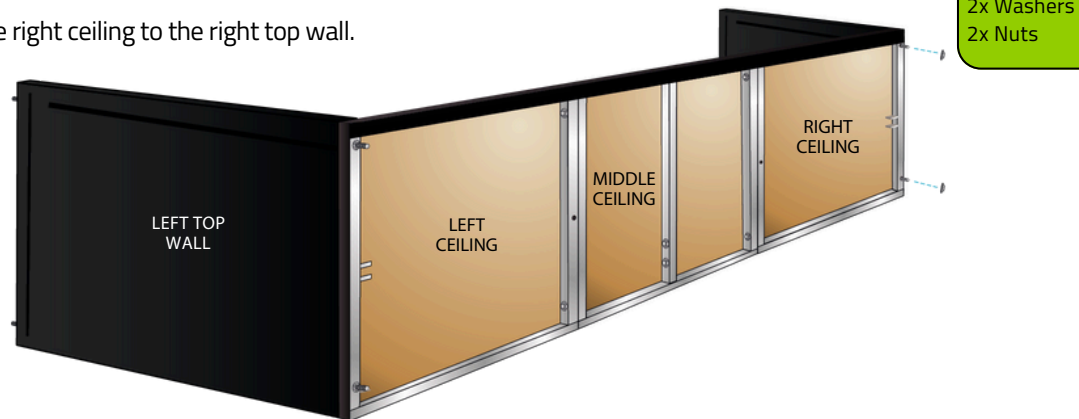
Using bolts-03, washers & nuts, fix the middle ceiling to the left ceiling, then fix the right ceiling to the middle ceiling.

4x Bolt-03  
4x Washers  
4x Nuts



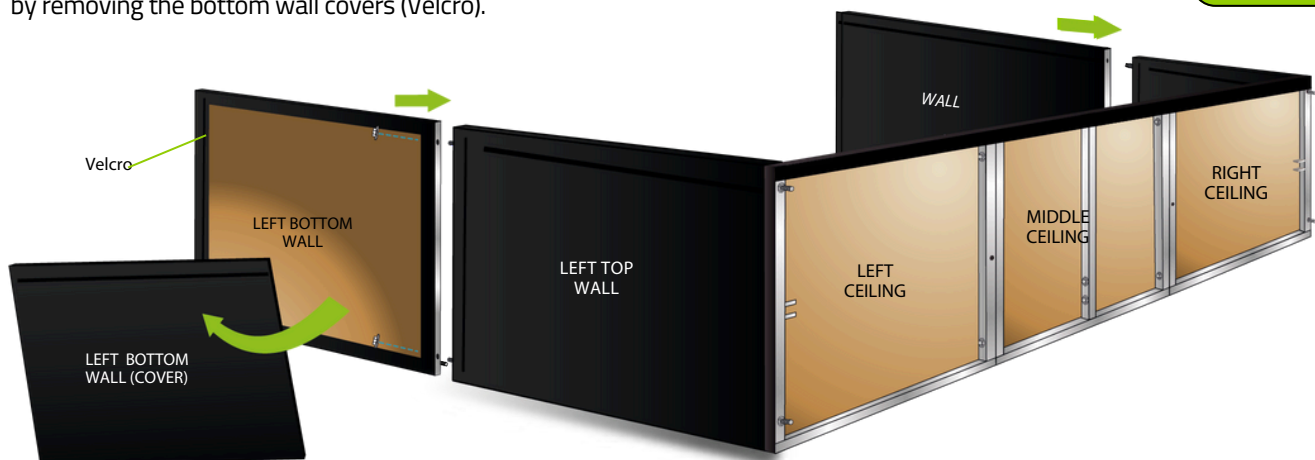
3

Using the nuts, fix the right ceiling to the right top wall.



4

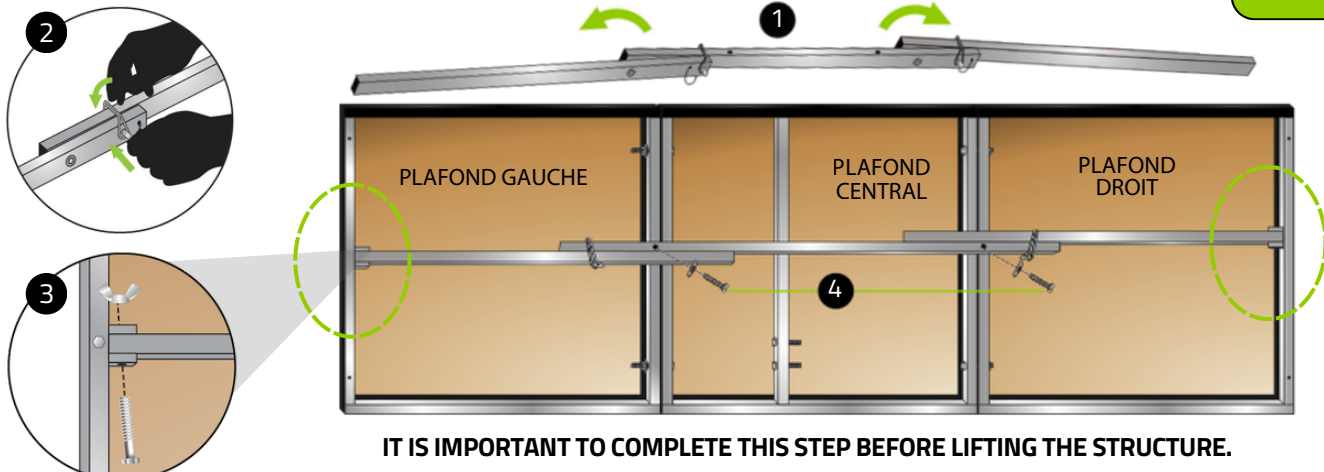
Fix the bottom wall panels to the top wall panels with washers & nuts by removing the bottom wall covers (Velcro).



5

**(1)** Unfold the scissor bar **(2)** and secure it with the safety pins. **(3)** Attach the scissor bar to both ends of the structure using washers, wing nuts, and bolts-02. **(4)** Attach the scissor bar to the center of the structure using washers and bolts-01.

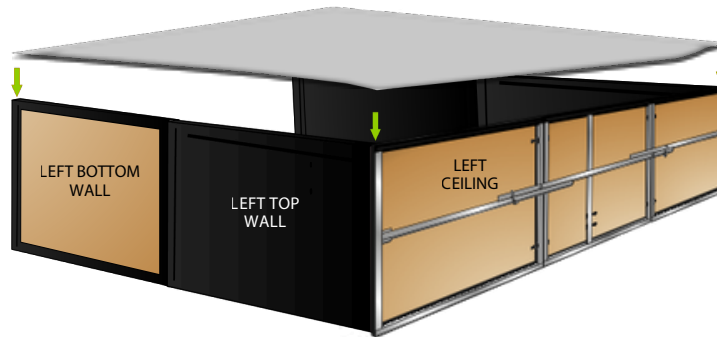
4x Washers  
2x Wing Nuts  
2x Bolts-01  
2x Bolts-02



IT IS IMPORTANT TO COMPLETE THIS STEP BEFORE LIFTING THE STRUCTURE.

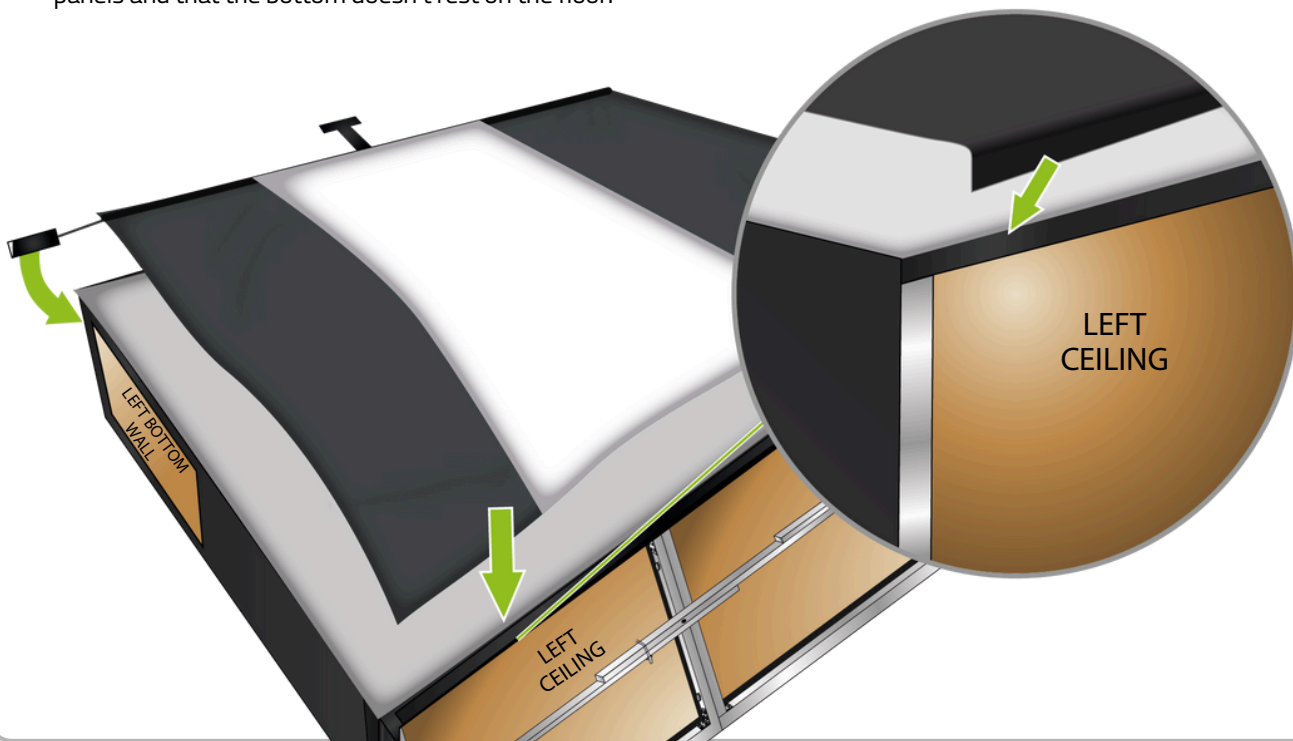
6

Attach the white screen to the structure using the velcros.



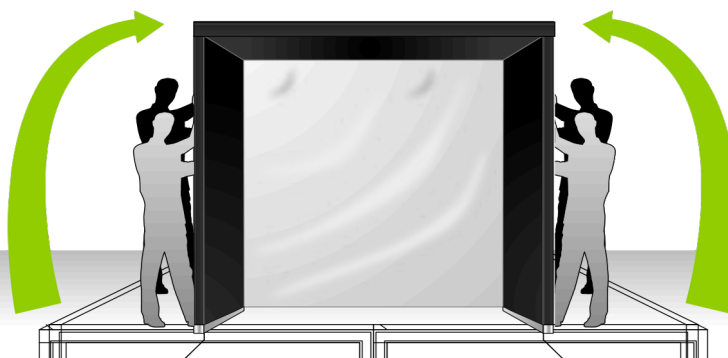
7

Attach the black impact netting over the white screen using the velcros. Make sure it is attached to the top velcros on the ceiling panels and that the bottom doesn't rest on the floor.



8

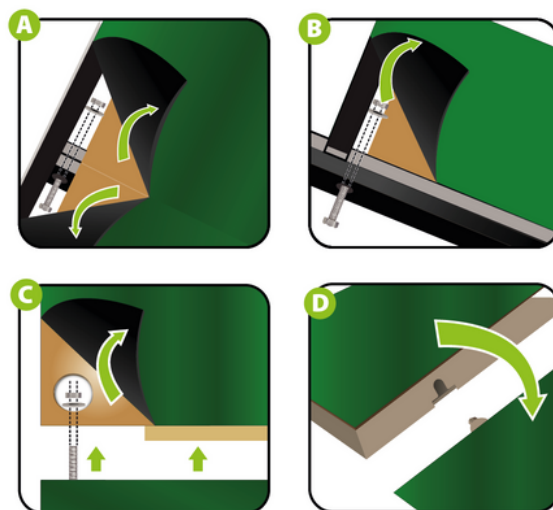
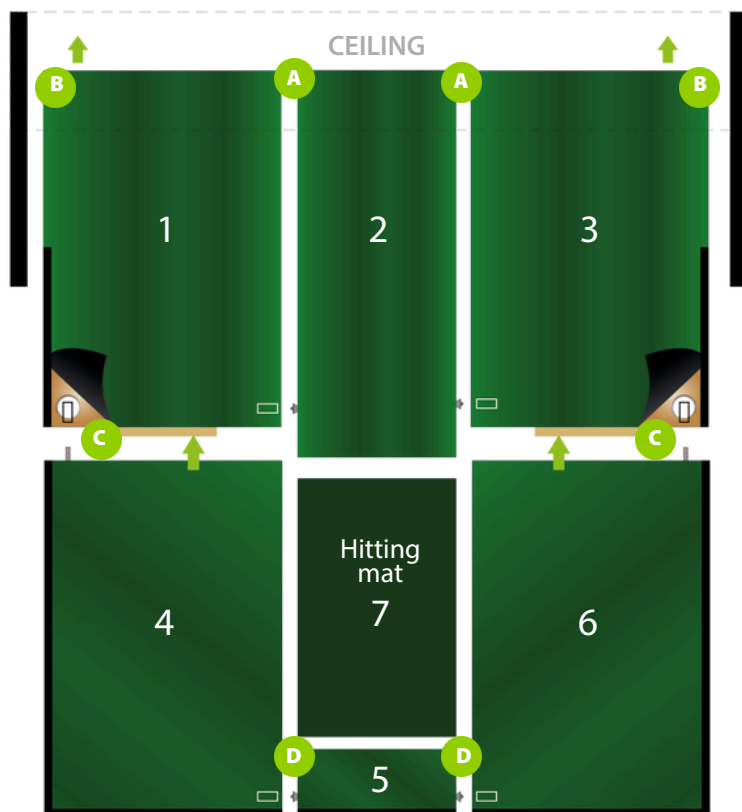
Lift the structure with 4 people.



1

Install the floor sections in order (1 to 7). For A and B, you will need bolts-03, washers, and nuts. For C, you will need washers and nuts.

6x Washers  
6x Nuts  
4x Bolts-03



2

### Step 1

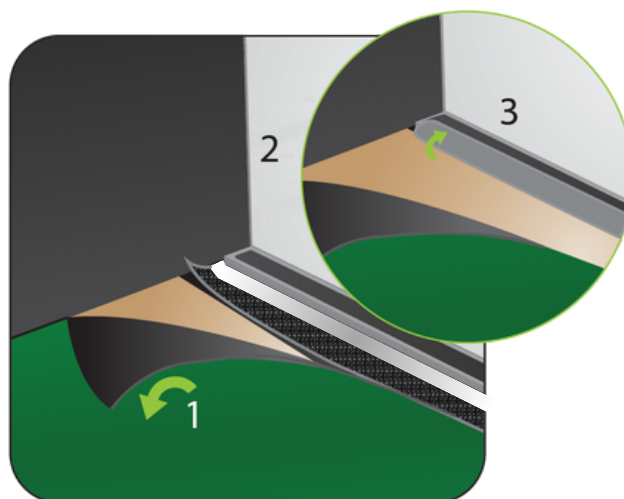
Lift green carpet.

### Step 2

Stretch the white screen behind and under the aluminum bar and reach for it through the space.

### Step 3

Fix the screen on the first half of the velcro on the aluminum bar.



3

**Step 1**

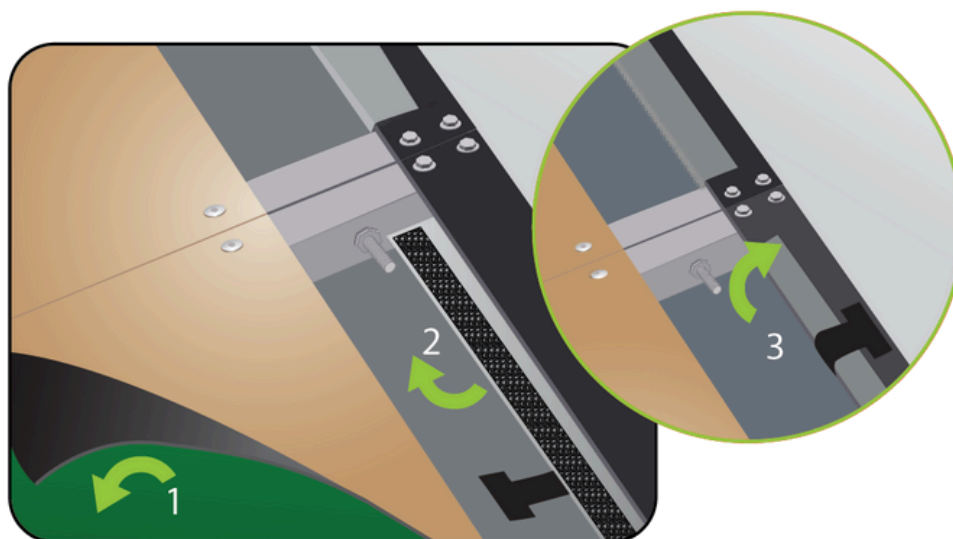
Lift green carpet.

**Step 2**

Stretch the white screen behind and under the aluminum bar and reach for it through the space.

**Step 3**

Stick it on the first half of the aluminum bar velcro. Fix the T on the remaining half.



END OF STRUCTURE FLOOR INSTALLATION SECTION

## HALF WALLS INSTALLATION

4x Washers  
4x Nuts

Simply cut through the black carpet to access the pre-drill holes and insert the half-walls. Fix the half-walls to the structure with washers and nuts. Then, fix the removable panel on the bottom walls with the velcro.

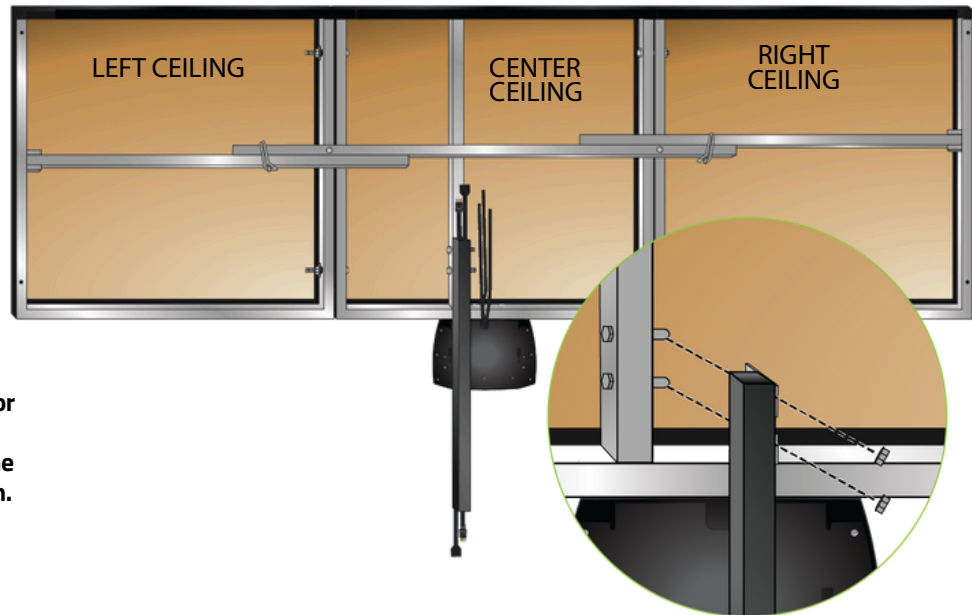


1

## PROJECTOR BEAM INSTALLATION

Fix the projector beam to the ceiling structure with washers and nuts.

2x Washers  
2x Nuts

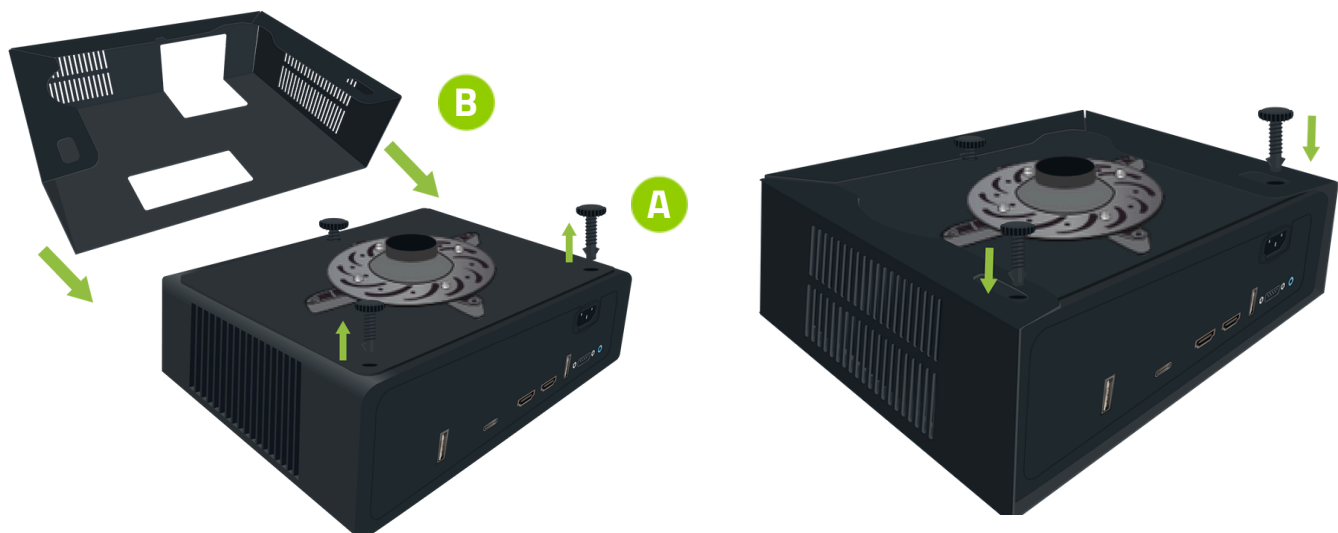


\*If you are not using the projector beam attached to the structure, please refer to Appendix A for the recommended projector position.

2

## PROJECTOR ENCLOSURE INSTALLATION (OPTIONAL)

**(A)** To install the projector enclosure, first remove the rear adjuster feet of the projector completely, and slightly loosen the front adjustable foot without removing it. **(B)** Next, insert the projector into the enclosure, making sure the lens is properly aligned with the designated opening. **(C)** Finally, reinstall the removed adjustable feet through the holes of the enclosure to secure the projector in place, and re-tighten the front adjustable foot.



3

### PROJECTOR INSTALLATION

Attach the projector on the projector mount. Refer to the instruction sheet inside the projector box.



4

### PROJECTOR CABLE CONNECTIONS

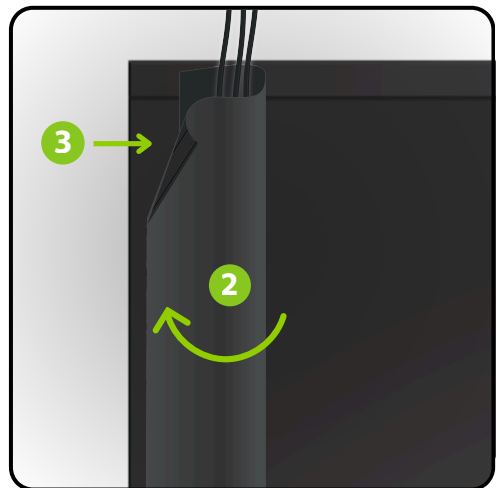
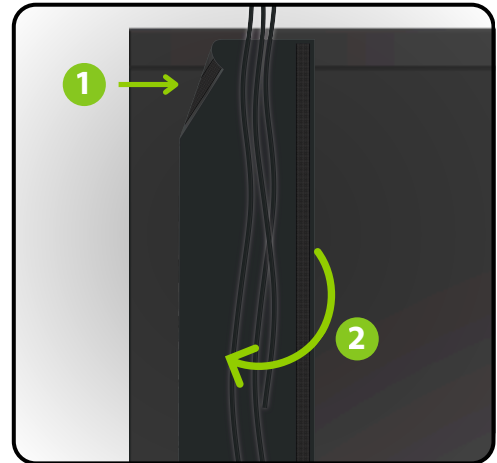
Plug the HDMI cable to the HDMI port on your projector and on your PC. Connect the power cable to the ground terminal and your electrical outlet. **Refer to Appendix B, C, D or E for your projector adjustments.**





## WIRE COVER

Stick one side of the wire cover to the structure using the Velcro. Gather your wires inside the wire cover and, forming a loop over the wires, stick the second side of the wire cover just in front of your first Velcro.





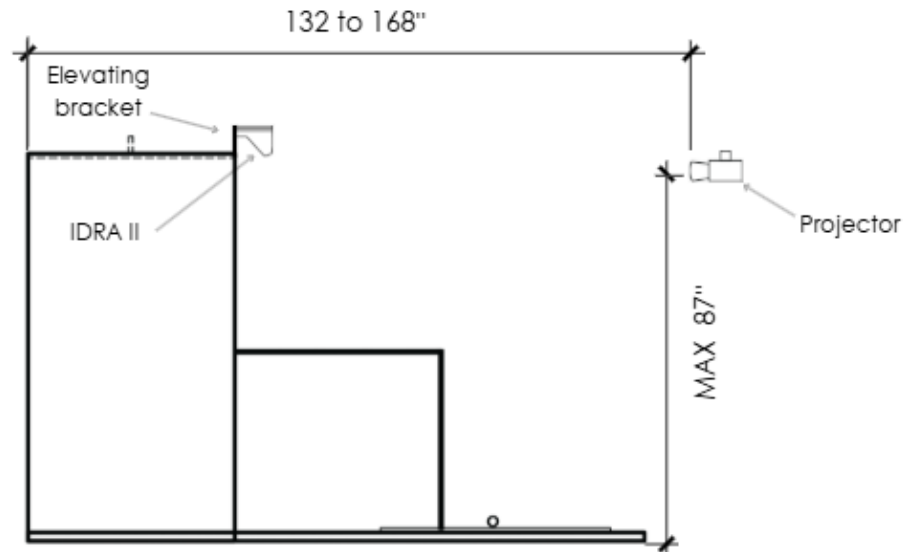
1

## PROJECTOR POSITION ON THE CEILING

Minimum projector distance:  
132" (screen to lens)

Maximum projector distance:  
168" (screen to lens)

Projector Height:  
87" (floor to the middle of the lens)



# BENQ AH30ST PROJECTOR AJUSTEMENTS WITH MONITOR

## TABLE OF CONTENTS

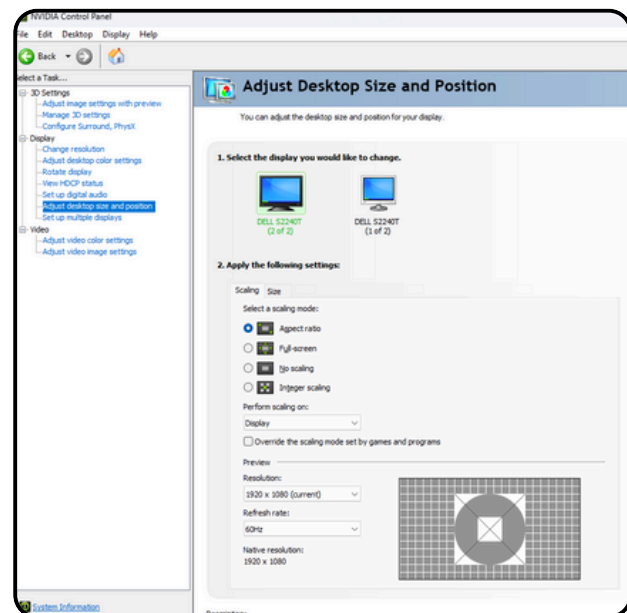
- |                                   |                          |
|-----------------------------------|--------------------------|
| 1. Select the correct HDMI Source | 4. Projector Settings    |
| 2. NVIDIA Control Panel (PC)      | 5. Projector Ajustements |
| 3. Windows Display Settings (PC)  |                          |

## 1.SELECT THE CORRECT HDMI SOURCE

- 1.Turn on the projector and press the 'Source' button on the remote control.
- 2.Use the arrows to navigate to the appropriate HDMI input (HDMI 1 or HDMI 2) and press 'OK' to select.

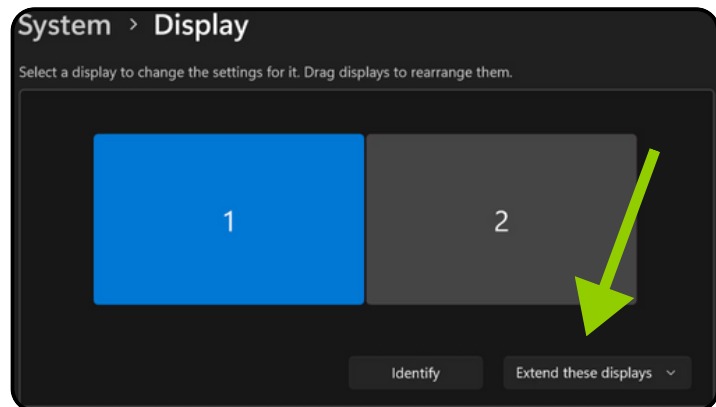
## 2.WINDOWS DISPLAY SETTINGS (PC)

1. Open the NVIDIA Control Panel & make sure the projector is turned on.
2. Click on "Adjust desktop size and position"
3. Select your monitor
4. Select "Aspect ratio"
5. Keep the resolution at 1920 × 1080
6. Select your projector
7. Select "Aspect ratio"
8. Keep the resolution at 1920 × 1080
9. Click "Apply" at the bottom right of the screen. Then "Yes" to "Apply Changes"



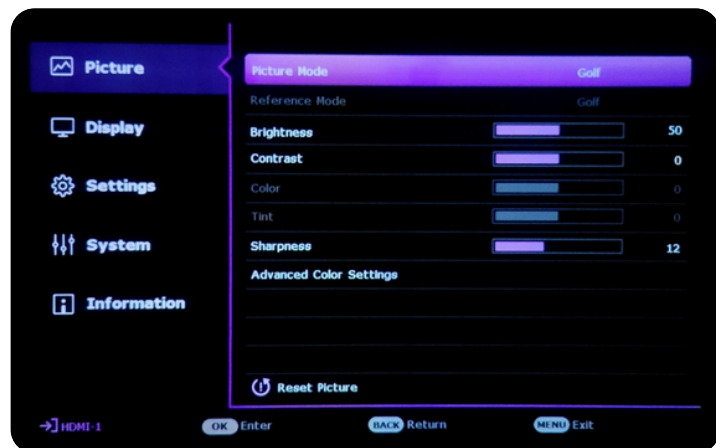
### 3. WINDOWS DISPLAY SETTINGS (PC)

1. Click Start > Settings
2. Go to System > Display
3. If both screens are detected, you will see two numbered rectangles (1 and 2)
4. Click on Extend these Display (menu below and to the right of the 2 screens)
5. Select "Duplicate these displays"
6. Click "Keep Change"
7. Make sure the display resolution is set to 1920 x 1080



### 4. PROJECTOR SETTINGS

1. Language: Select the desired language
2. Menu (On the remote) : Menu Type > Choose Advanced
3. Picture> Picture Mode: Select Golf

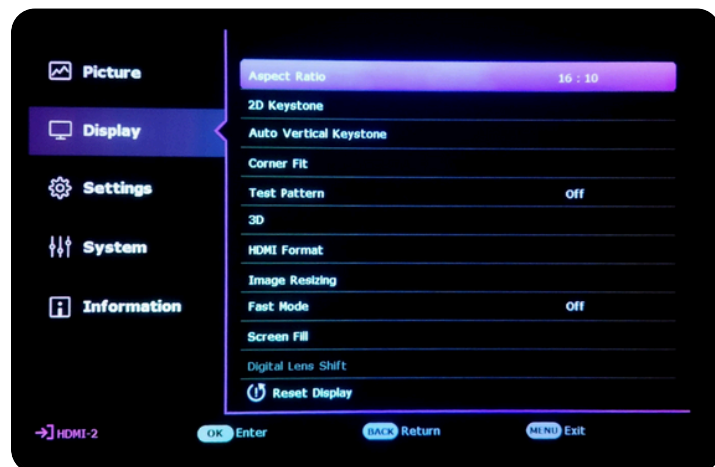


## 4. PROJECTOR SETTINGS (CONTINUED)

4. Display > Screen Fill: Choose 16:9 (1920 × 1080)



5. Display > Aspect Ratio : Select 16:10



## 5. PROJECTOR AJUSTEMENTS

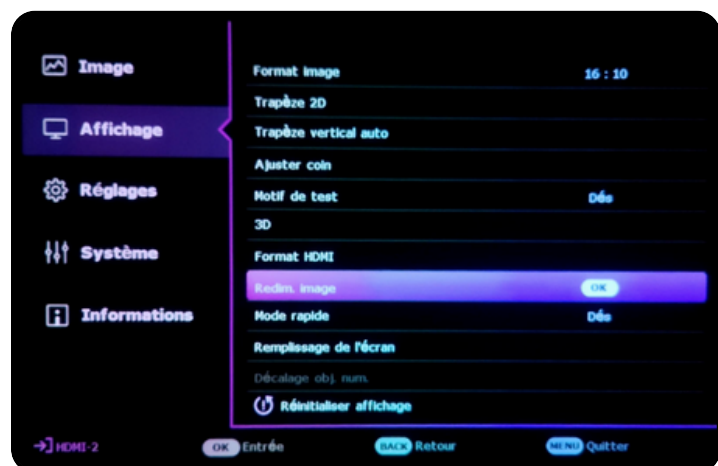
Each environment is unique, so this section may require a bit more time and patience. Depending on your setup (screen size, projector distance, ceiling height, etc.), the adjustments needed can vary significantly from one user to another.

Take the time to explore and combine the different adjustments below to achieve an image perfectly suited to your installation. Don't hesitate to repeat the process multiple times to fine-tune the result to your preferences.

- Zoom: Adjust the image size using the zoom dial under the lens

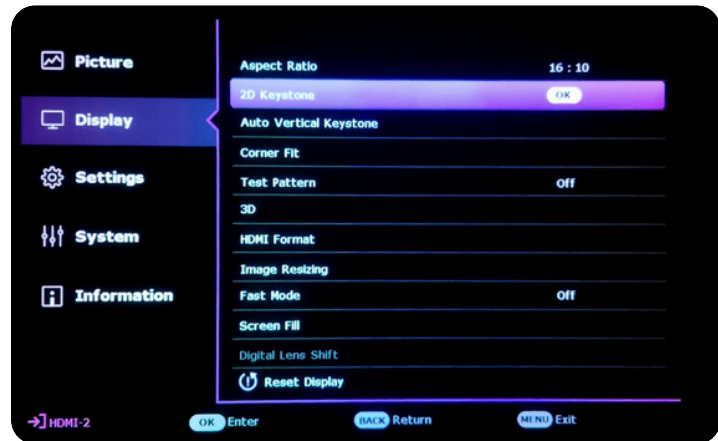


- Display > Image Resizing: Use Digital Shrink & Shift → Adjust the image so that it slightly exceeds the desired size on all sides

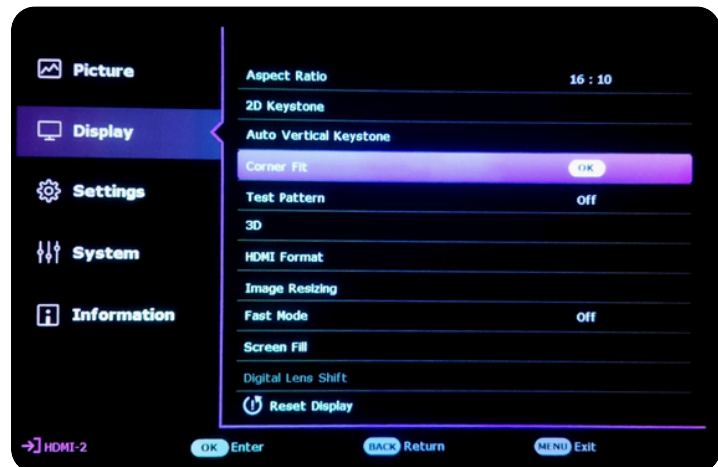


## 5. PROJECTOR AJUSTEMENTS (CONTINUED)

- Display > 2D Keystone: Correct vertical tilt and horizontal shift of the image



- Display > Corner Fit: Fine-tune the image size and position for precise alignment



- Focus: Adjust image sharpness using the focus dial under the lens



# BENQ AH30ST PROJECTOR AJUSTEMENTS **WITHOUT MONITOR**

## TABLE OF CONTENTS

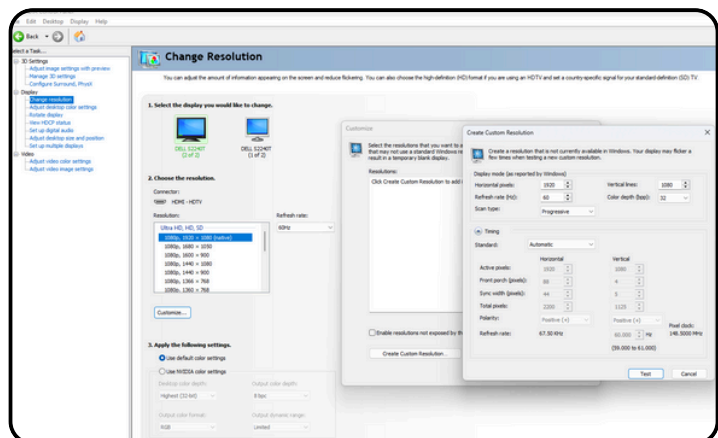
1. Select the correct HDMI Source
2. NVIDIA Control Panel (PC)
3. Windows Display Settings (PC)
4. Projector Settings
5. Projector Ajustements

## 1.SELECT THE CORRECT HDMI SOURCE

- 1.Turn on the projector and press the 'Source' button on the remote control.
- 2.Use the arrows to navigate to the appropriate HDMI input (HDMI 1 or HDMI 2) and press 'OK' to select.

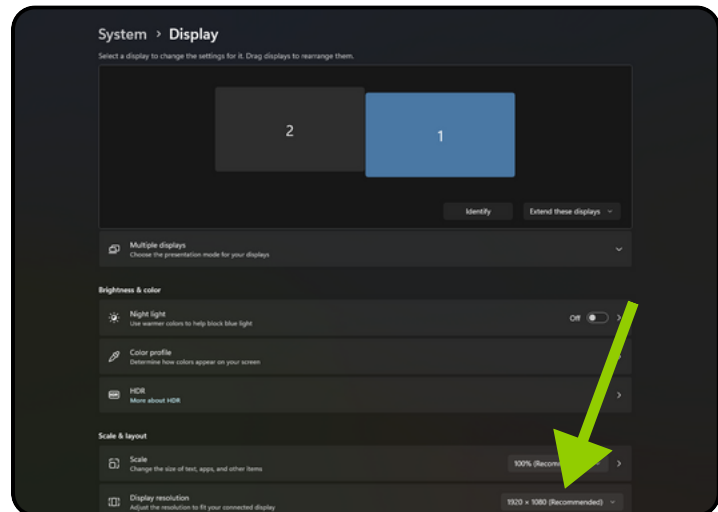
## 2.WINDOWS DISPLAY SETTINGS (PC)

1. Open the NVIDIA Control Panel
2. Click on Change resolution:  
Customise > Create custom resolution
3. Under Display mode (as reported by Windows), Change :
  - Horizontal pixels to 1547
  - Vertical Lines to 1080
4. Click on Test > Apply change > Yes
5. Click on Adjust desktop size and position:
6. Select "Aspect ratio" (The projector must be turned on beforehand)
7. Change the Resolution to 1547 × 1080
8. Click "Apply" at the bottom right of the screen. Then "Yes" to "Apply Changes"



### 3. WINDOWS DISPLAY SETTINGS (PC)

1. Click Start > Settings
2. Go to System > Display
3. Make sure the display resolution is set to 1547 × 1080
4. If not, change it & Click "Yes" to Keep these display setting



### 4. PROJECTOR SETTINGS

1. Language: Select the desired language
2. Menu (On the remote) : Menu Type > Choose Advanced
3. Picture> Picture Mode: Select Golf



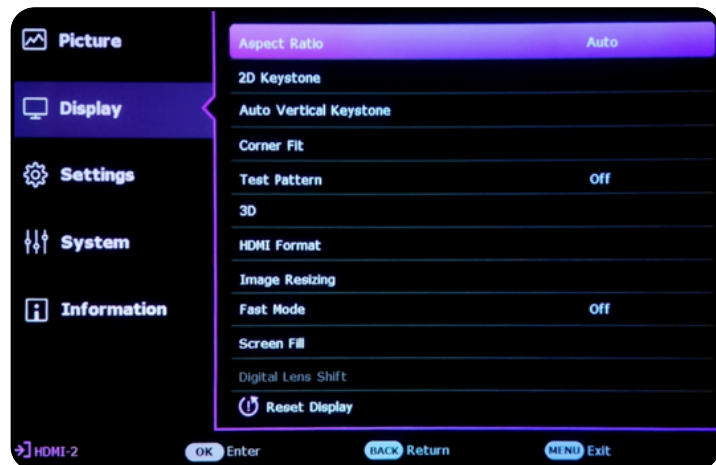


## 4. PROJECTOR SETTINGS (CONTINUED)

4. Display > Screen Fill: Choose 16:9 (1920 × 1080)



5. Display > Aspect Ratio : Select "Auto"



## 5. PROJECTOR AJUSTEMENTS

Each environment is unique, so this section may require a bit more time and patience. Depending on your setup (screen size, projector distance, ceiling height, etc.), the adjustments needed can vary significantly from one user to another.

Take the time to explore and combine the different adjustments below to achieve an image perfectly suited to your installation. Don't hesitate to repeat the process multiple times to fine-tune the result to your preferences.

- Zoom: Adjust the image size using the zoom dial under the lens



- Display > Image Resizing: Use Digital Shrink & Shift → Adjust the image so that it slightly exceeds the desired size on all sides



## 5. PROJECTOR AJUSTEMENTS (CONTINUED)

- Display > 2D Keystone: Correct vertical tilt and horizontal shift of the image



- Display > Corner Fit: Fine-tune the image size and position for precise alignment



- Focus: Adjust image sharpness using the focus dial under the lens



# BENQ AK700ST PROJECTOR AJUSTEMENTS **WITH MONITOR**

## TABLE OF CONTENTS

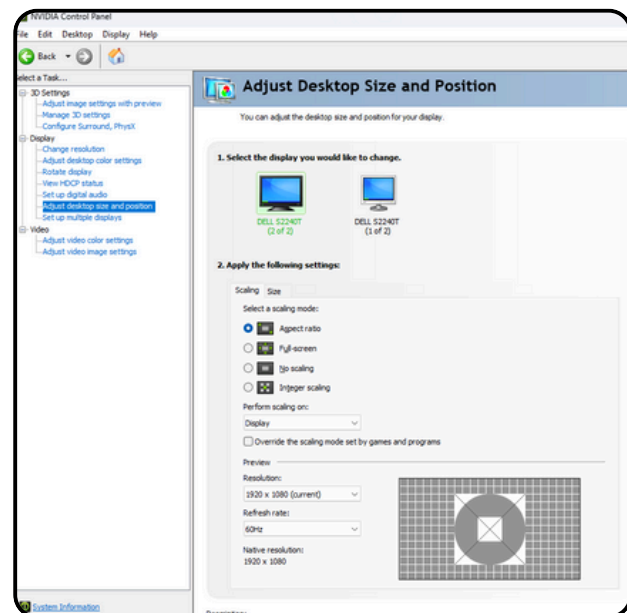
- |                                   |                          |
|-----------------------------------|--------------------------|
| 1. Select the correct HDMI Source | 4. Projector Settings    |
| 2. NVIDIA Control Panel (PC)      | 5. Projector Ajustements |
| 3. Windows Display Settings (PC)  |                          |

## 1.SELECT THE CORRECT HDMI SOURCE

- 1.Turn on the projector and press the 'Source' button on the remote control.
- 2.Use the arrows to navigate to the appropriate HDMI input (HDMI 1 or HDMI 2) and press 'OK' to select.

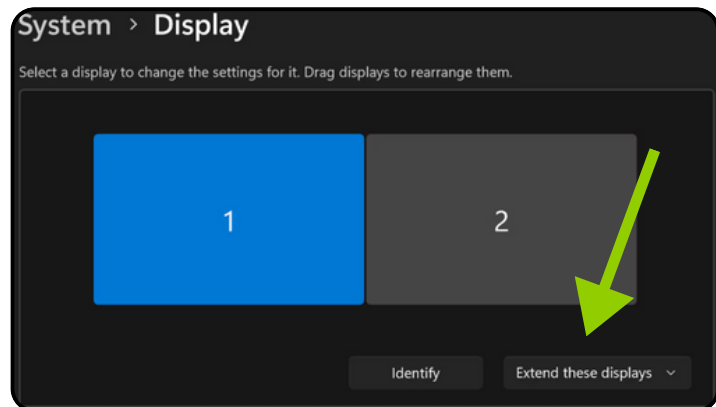
## 2.WINDOWS DISPLAY SETTINGS (PC)

1. Open the NVIDIA Control Panel & make sure the projector is turned on.
2. Click on "Adjust desktop size and position"
3. Select your monitor
4. Select "Aspect ratio"
5. Keep the resolution at 1920 × 1080
6. Select your projector
7. Select "Aspect ratio"
8. Keep the resolution at 1920 × 1080
9. Click "Apply" at the bottom right of the screen. Then "Yes" to "Apply Changes"



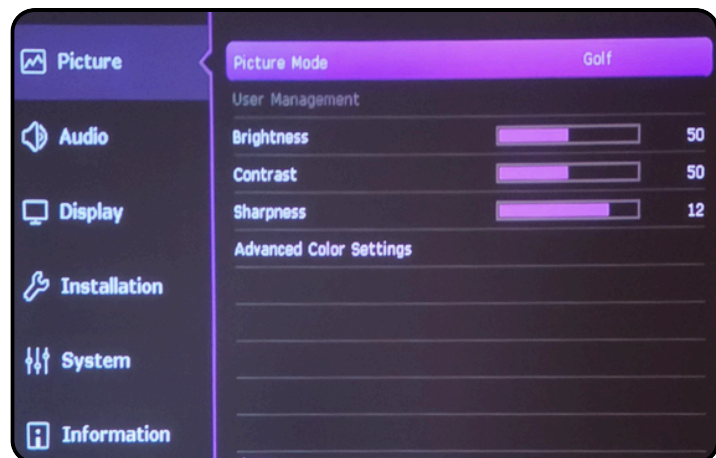
### 3. WINDOWS DISPLAY SETTINGS (PC)

1. Click Start > Settings
2. Go to System > Display
3. If both screens are detected, you will see two numbered rectangles (1 and 2)
4. Click on Extend these Display (menu below and to the right of the 2 screens)
5. Select "Duplicate these displays"
6. Click "Keep Change"
7. Make sure the display resolution is set to 1920 x 1080

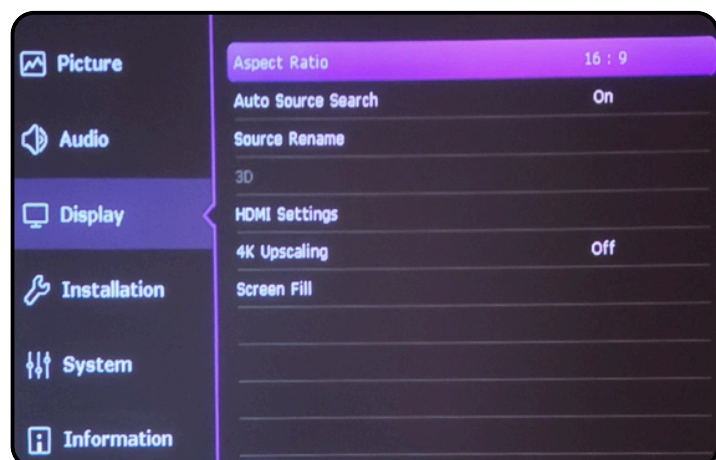


### 4. PROJECTOR SETTINGS

1. Turn on your Projector
2. Auto Screen Fit / Ok
3. Menu / Select Projector Position
4. Language: Select the desired language
5. Press Menu (On the remote) : Menu Type / Choose Advanced
6. Picture / Picture Mode: Select Golf



7. Display / Aspect Ratio / 16:9

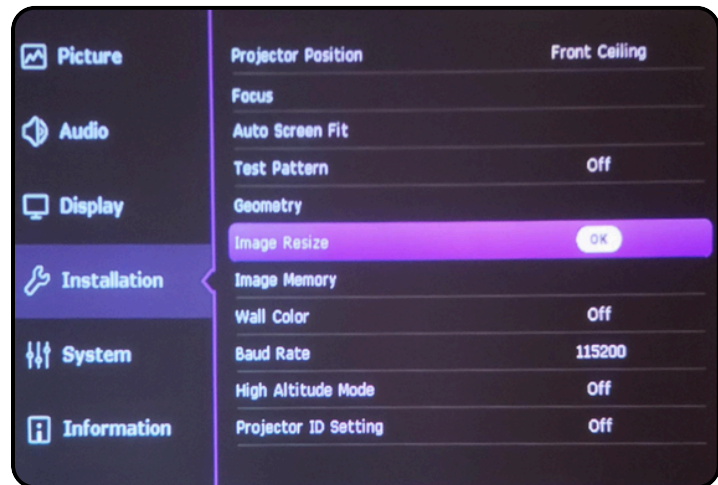


## 5. PROJECTOR AJUSTEMENTS

Each environment is unique, so this section may require a bit more time and patience. Depending on your setup (screen size, projector distance, ceiling height, etc.), the adjustments needed can vary significantly from one user to another.

Take the time to explore and combine the different adjustments below to achieve an image perfectly suited to your installation. Don't hesitate to repeat the process multiple times to fine-tune the result to your preferences.

- Installation / Image Resize / Digital Shrink & Shift



- Installation / Geometry / Corner Fit :  
Fine-tune the image size and position for precise alignment

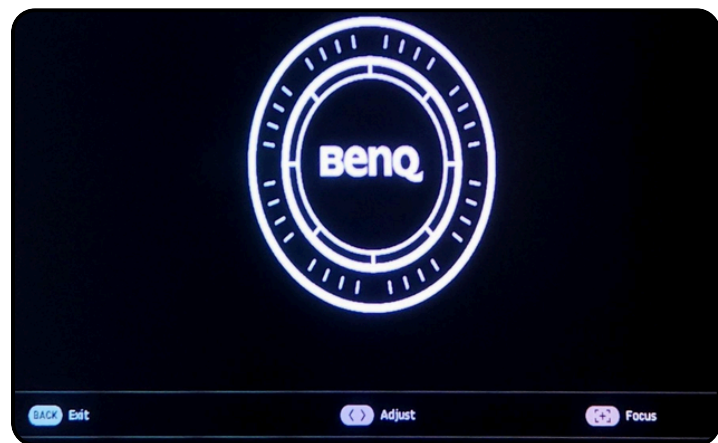


## 5. PROJECTOR AJUSTEMENTS (CONTINUED)

- Installation / Focus / Focus / Ok



- After the auto-focus, fine-tune the focus using the left and right arrows on the remote.





# BENQ AK700ST PROJECTOR AJUSTEMENTS WITHOUT MONITOR

## TABLE OF CONTENTS

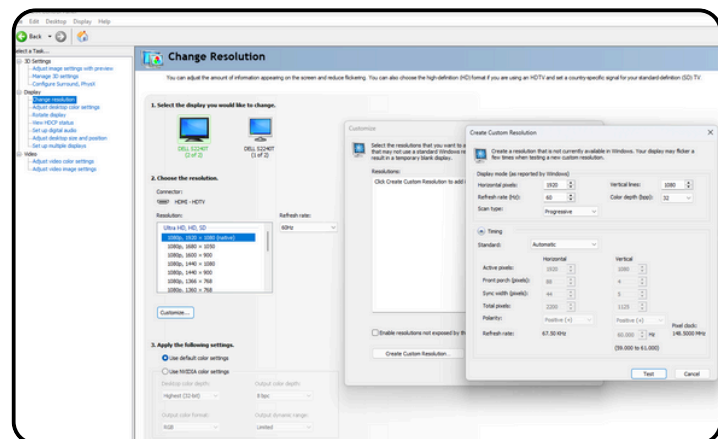
1. Select the correct HDMI Source
2. NVIDIA Control Panel (PC)
3. Windows Display Settings (PC)
4. Projector Settings
5. Projector Ajustements

## 1.SELECT THE CORRECT HDMI SOURCE

- 1.Turn on the projector and press the 'Source' button on the remote control.
- 2.Use the arrows to navigate to the appropriate HDMI input (HDMI 1 or HDMI 2) and press 'OK' to select.

## 2.WINDOWS DISPLAY SETTINGS (PC)

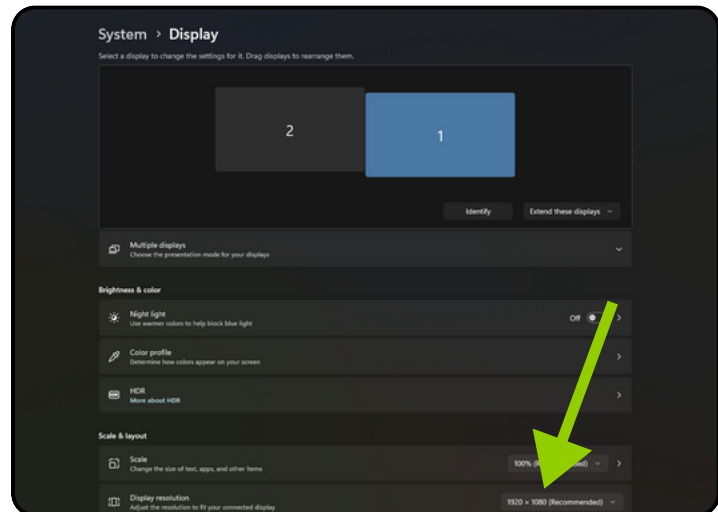
1. Open the NVIDIA Control Panel
2. Click on Change resolution:  
Customise > Create custom resolution
3. Under Display mode (as reported by Windows), Change :
  - Horizontal pixels to 1547
  - Vertical Lines to 1080
4. Click on Test > Apply change > Yes
5. Click on Adjust desktop size and position:
6. Select "Full screen" (The projector must be turned on beforehand)
7. Change the Resolution to 1547 × 1080
8. Click "Apply" at the bottom right of the screen. Then "Yes" to "Apply Changes"





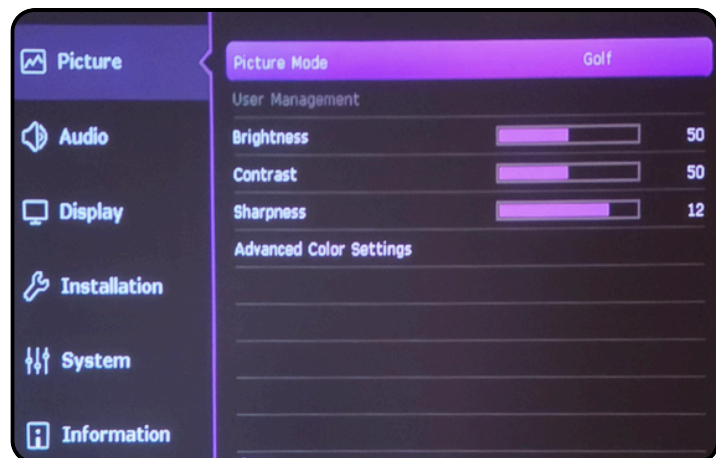
### 3. WINDOWS DISPLAY SETTINGS (PC)

1. Click Start > Settings
2. Go to System > Display
3. Make sure the display resolution is set to 1547 × 1080
4. If not, change it & Click "Yes" to keep these display setting

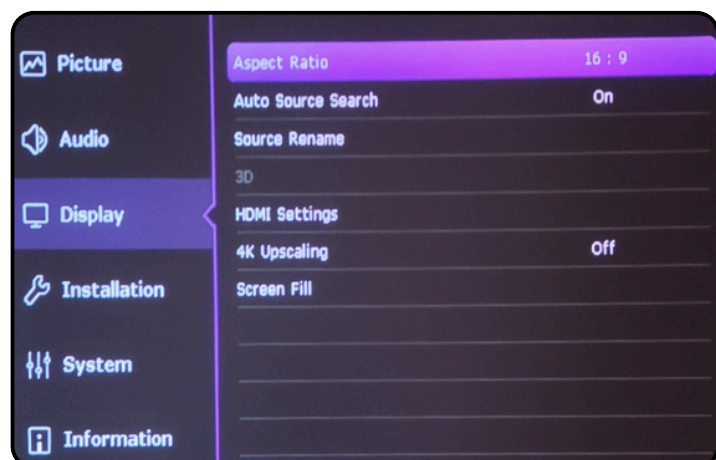


### 4. PROJECTOR SETTINGS

1. Turn on your Projector
2. Auto Screen Fit / Ok
3. Menu / Select Projector Position
4. Language: Select the desired language
5. Press Menu (On the remote) : Menu Type / Choose Advanced
6. Picture / Picture Mode: Select Golf



7. Display / Aspect Ratio / 16:9



## 5. PROJECTOR AJUSTEMENTS

Each environment is unique, so this section may require a bit more time and patience. Depending on your setup (screen size, projector distance, ceiling height, etc.), the adjustments needed can vary significantly from one user to another.

Take the time to explore and combine the different adjustments below to achieve an image perfectly suited to your installation. Don't hesitate to repeat the process multiple times to fine-tune the result to your preferences.

- Installation / Image Resize / Digital Shrink & Shift



- Installation / Geometry / Corner Fit :  
Fine-tune the image size and position for precise alignment



## 5. PROJECTOR AJUSTEMENTS (CONTINUED)

- Installation / Focus / Focus / Ok

