



INSTALLATION GUIDE

SIMBOOTH 2

TABLE OF CONTENTS

Parts List 3-4

Structure Installation 5-9

Floor Installation 10-11

Electronics Installation 12

Wire Cover Installation 13

Appendix A 14

Appendix B 15-19

Appendix C 20-24

Appendix D 25-28

Appendix E 29-32



PARTS LIST

WALL PANELS

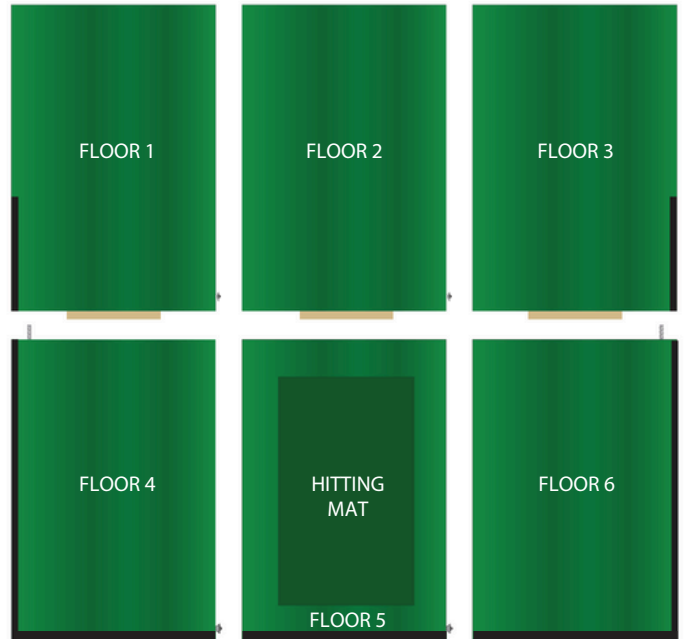
RIGHT WALLS



LEFT WALLS



FLOOR PANELS



CEILING PANELS

BACK CEILINGS



FRONT CEILINGS



PARTS LIST

ACCESSORIES

Bolts full threads



3-1/2" (10x)

Wing Nuts (4x)



Washer (42x)



Nuts (32x)



Hitting mat



Black impact screen



Scissor bar (2x)



Bolt



2" (4x)

White screen



Tees (10x)



OPTIONALS

Half-Walls
(2x)



Projector & Remote



Projector Beam



Wire Cover



END OF PARTS LIST

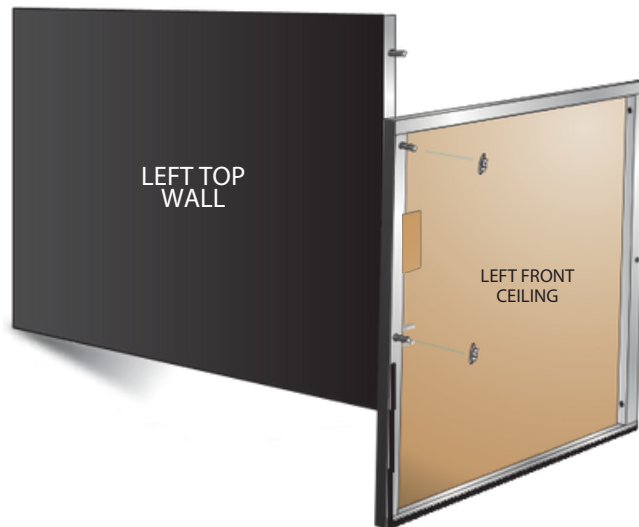
BEFORE STARTING

You will need 4 people, 2 ladders, a screwdriver and 1/2 wrench.



1

Fix the left top wall to the left front ceiling with the nuts.



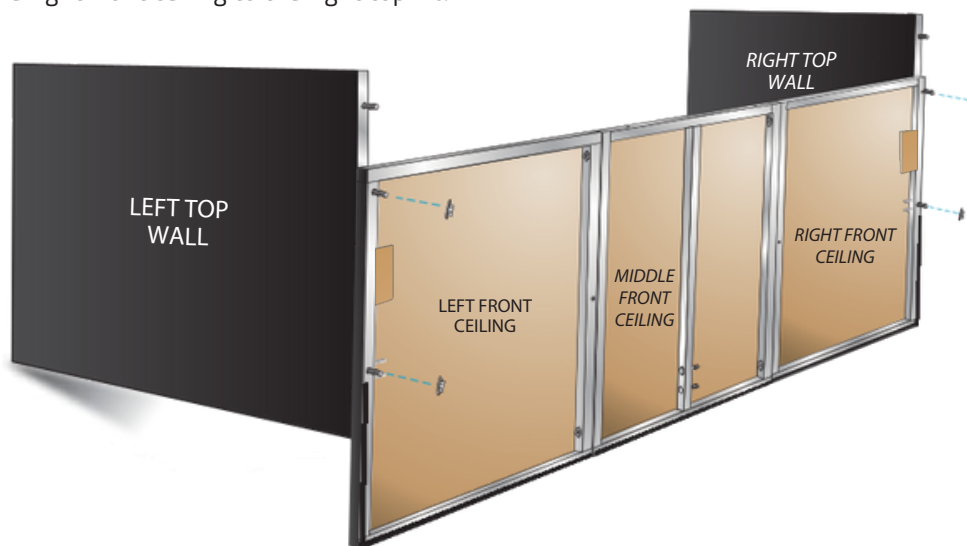
2

Using the nuts, fix the middle front ceiling to the left front ceiling, then fix the right front ceiling to the middle front ceiling.



3

Using the nuts, fix the right front ceiling to the right top wall.



4

Fix both bottom wall panels to the top wall panels with the nuts by removing the bottom wall covers (velcro).



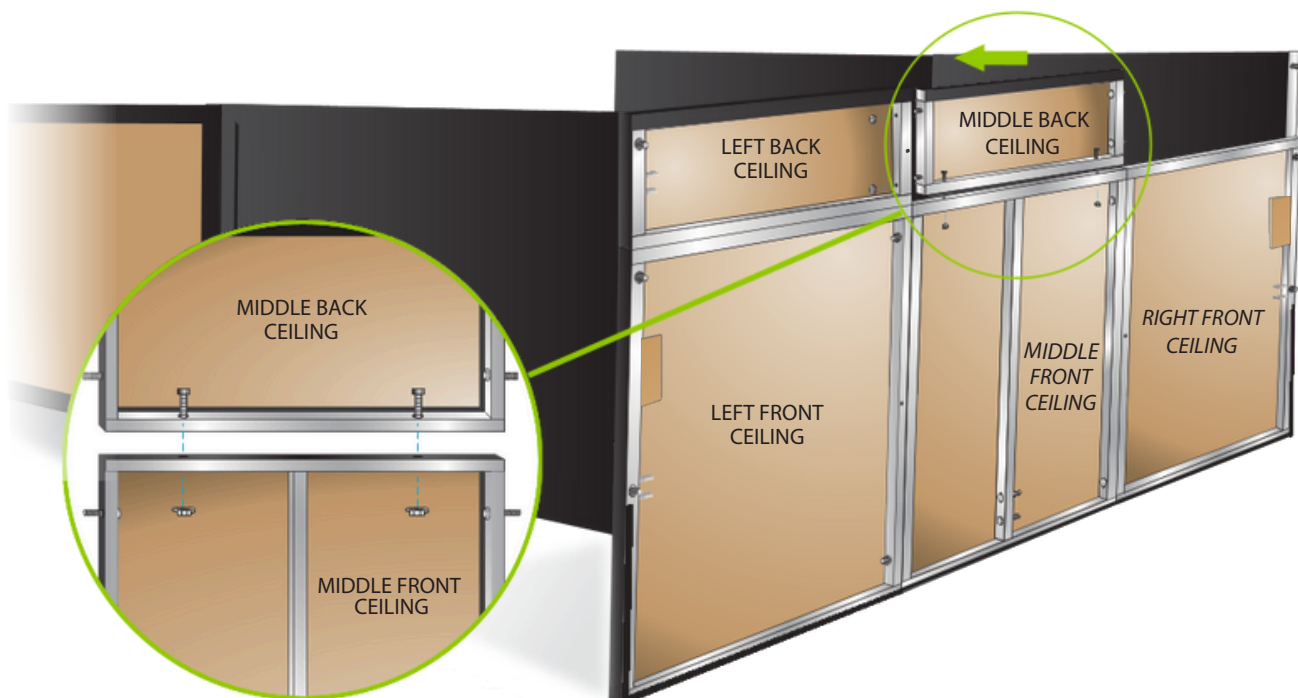
5

Fix the left back ceiling to the left top wall with the nuts.



6

Using the nuts, fix the middle back ceiling to the left back ceiling and fix the two middle ceilings together.



7

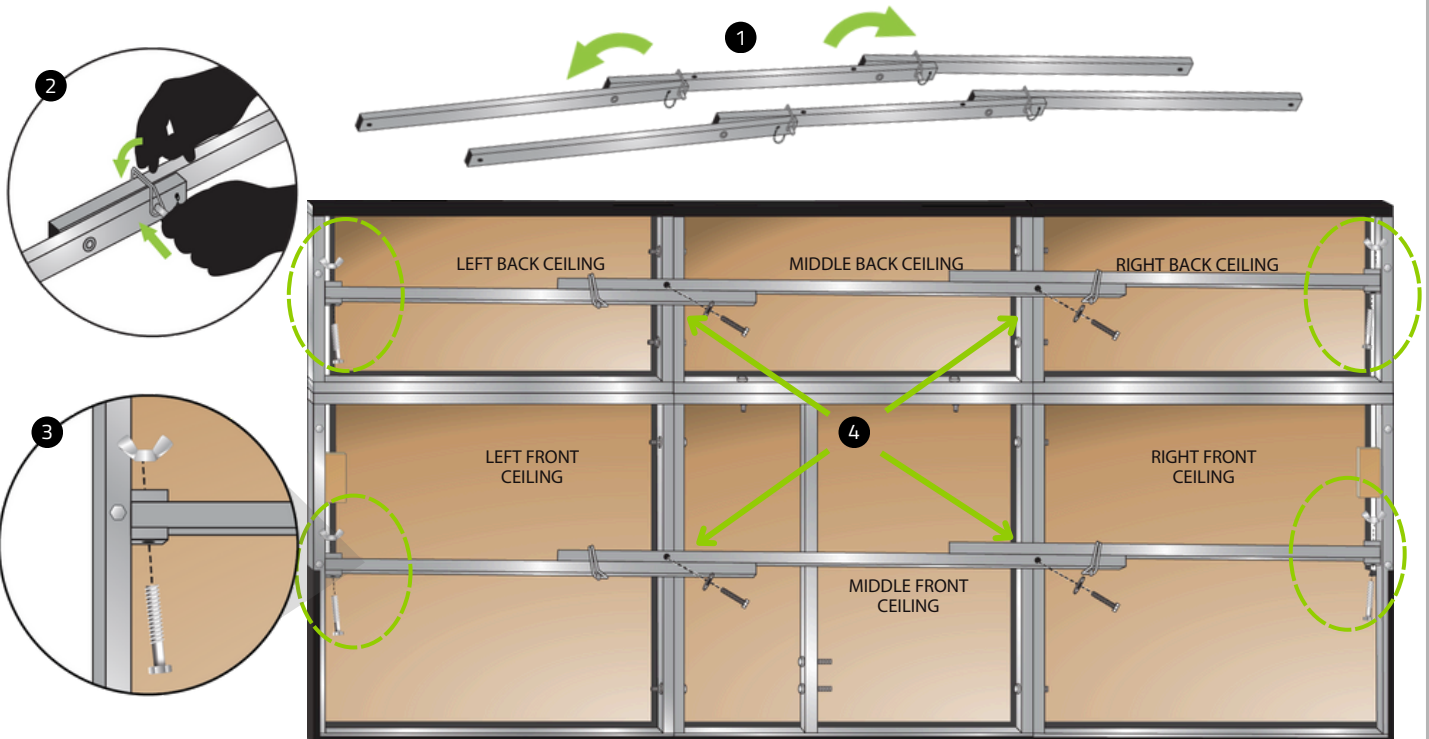
Fix the right back ceiling to the middle back ceiling and to the right top wall with the nuts.



8

SCISSOR BARS INSTALLATION

Assemble the scissor bars with bolts and security pins, then insert them in the back ceiling and the front ceiling.



IT IS IMPORTANT TO COMPLETE THIS STEP BEFORE LIFTING THE STRUCTURE.

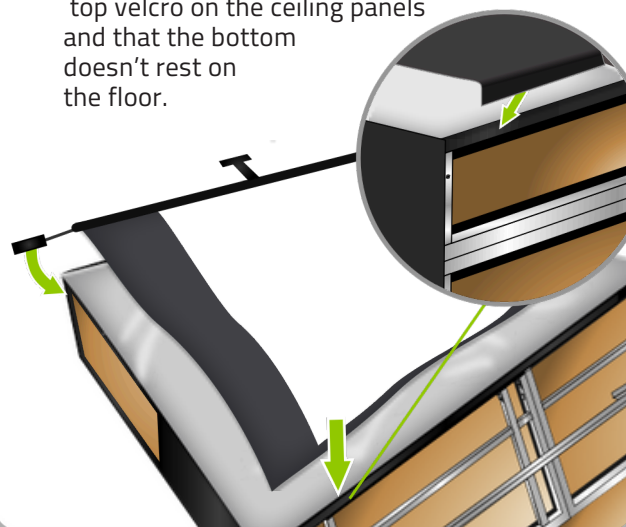
9

Attach the white screen to the structure.



10

Attach the black netting over the white screen. Make sure it is attached to the top velcro on the ceiling panels and that the bottom doesn't rest on the floor.



11

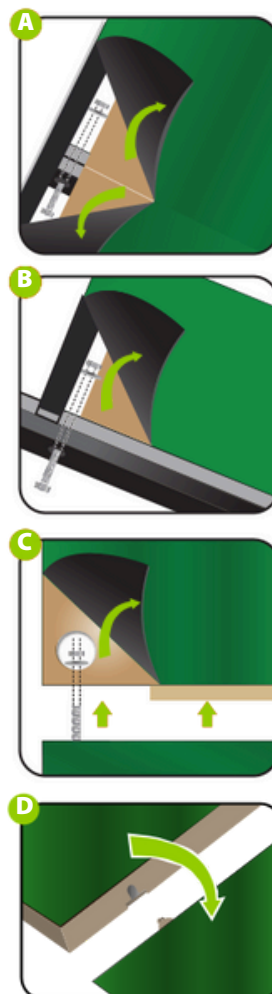
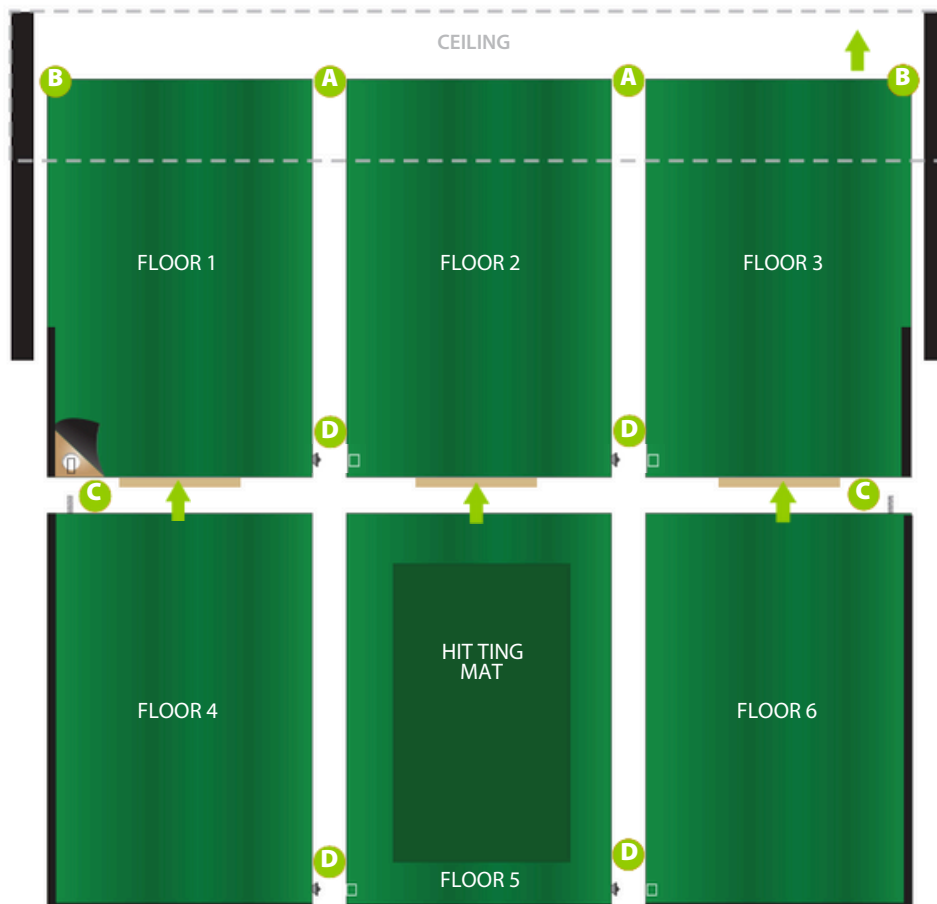
Lift the structure with four people.



END OF STRUCTURE INSTALLATION SECTION

1

Install the floor sections in order (1 to 6). A and B you will need bolts washers and nuts. C you will need washers and nuts.



2

Step 1

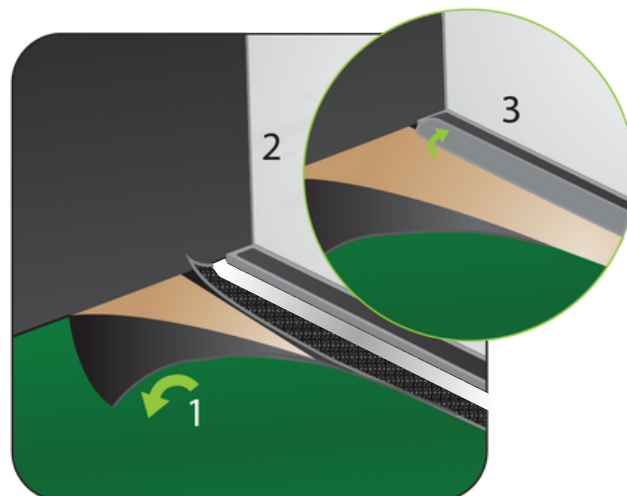
Lift green carpet.

Step 2

Stretch the white screen behind and under the aluminum bar and reach for it through the space.

Step 3

Fix the screen on the first half of the velcro on the aluminum bar.



3

Step 1

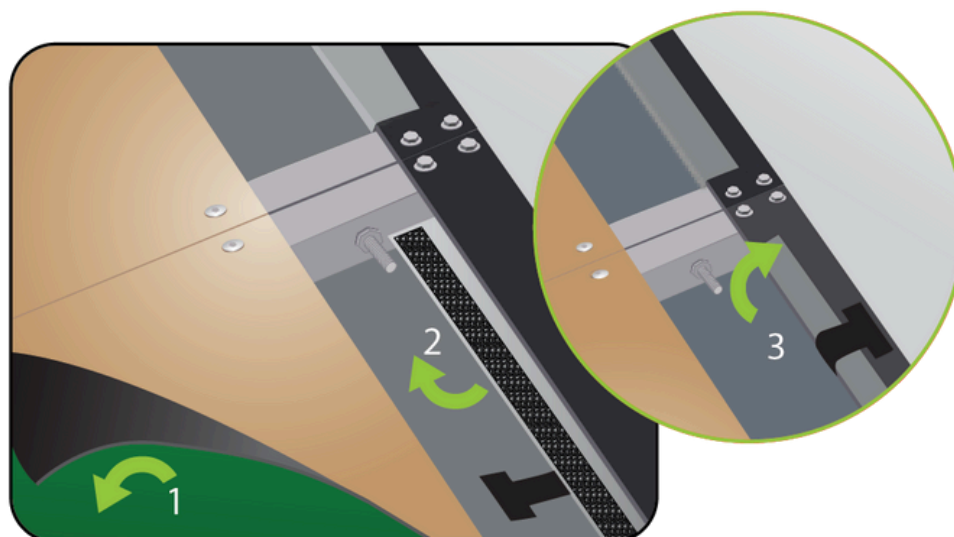
Lift green carpet.

Step 2

Stretch the white screen behind and under the aluminum bar and reach for it through the space.

Step 3

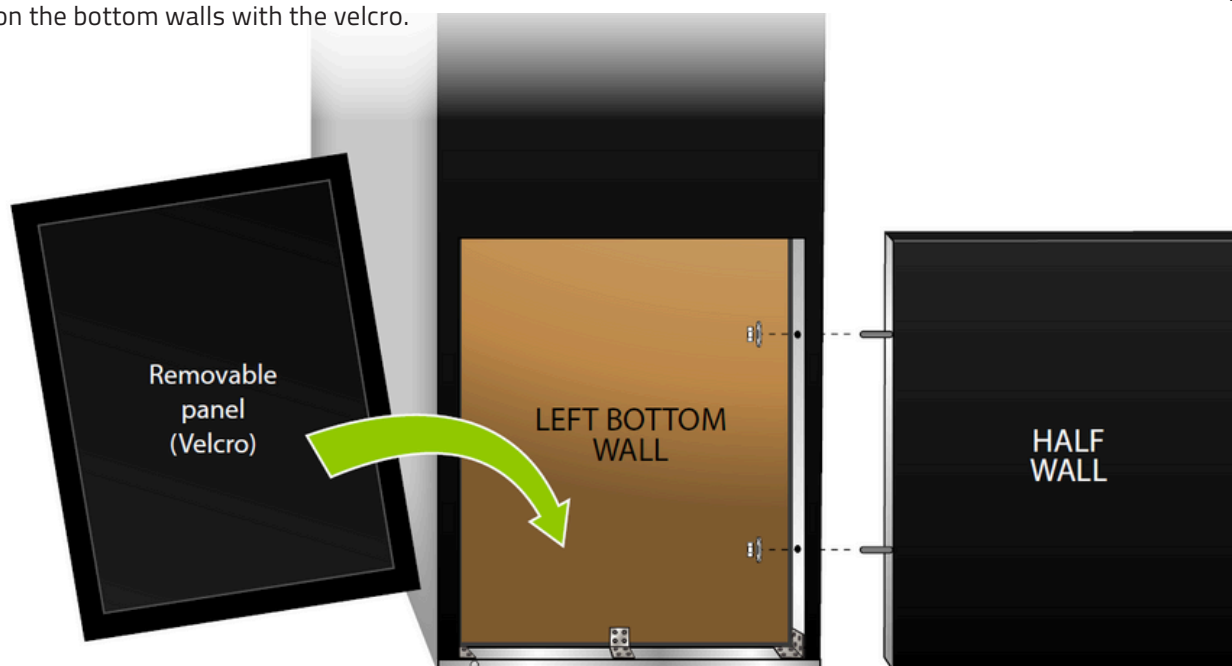
Stick it on the first half of the aluminum bar velcro. Fix the T on the remaining half.



END OF STRUCTURE FLOOR INSTALLATION SECTION

HALF WALLS INSTALLATION

Simply cut through the black carpet at 4 inches and 38 inches from the floor to access the pre-drill holes and insert the half-walls. Fix the half-walls to the structure with washers and nuts. Then, install the removable panel on the bottom walls with the velcro.

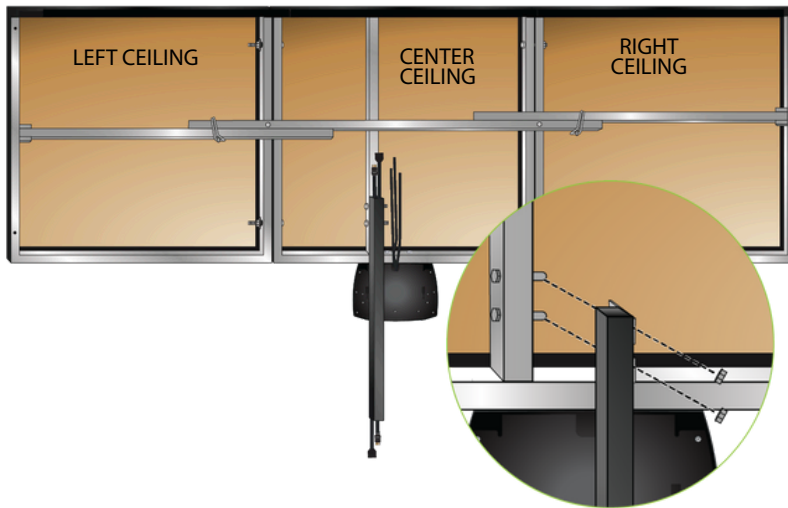


1

PROJECTOR BEAM INSTALLATION

Attach the projector beam to the ceiling structure with washers and nuts.

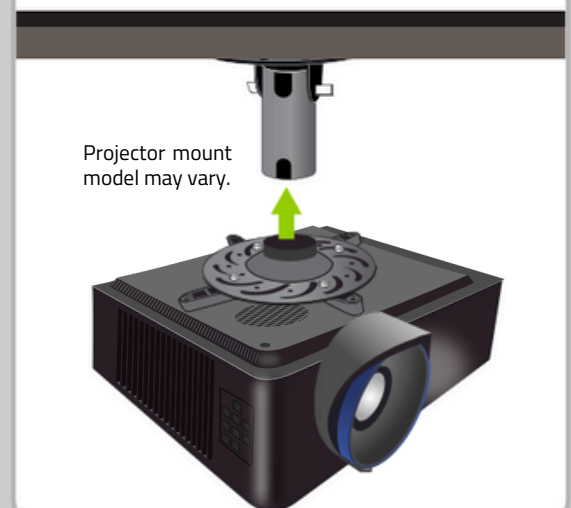
***If you are not using the projector beam attached to the structure, please refer to Appendix A for the recommended projector position.**



2

PROJECTOR INSTALLATION

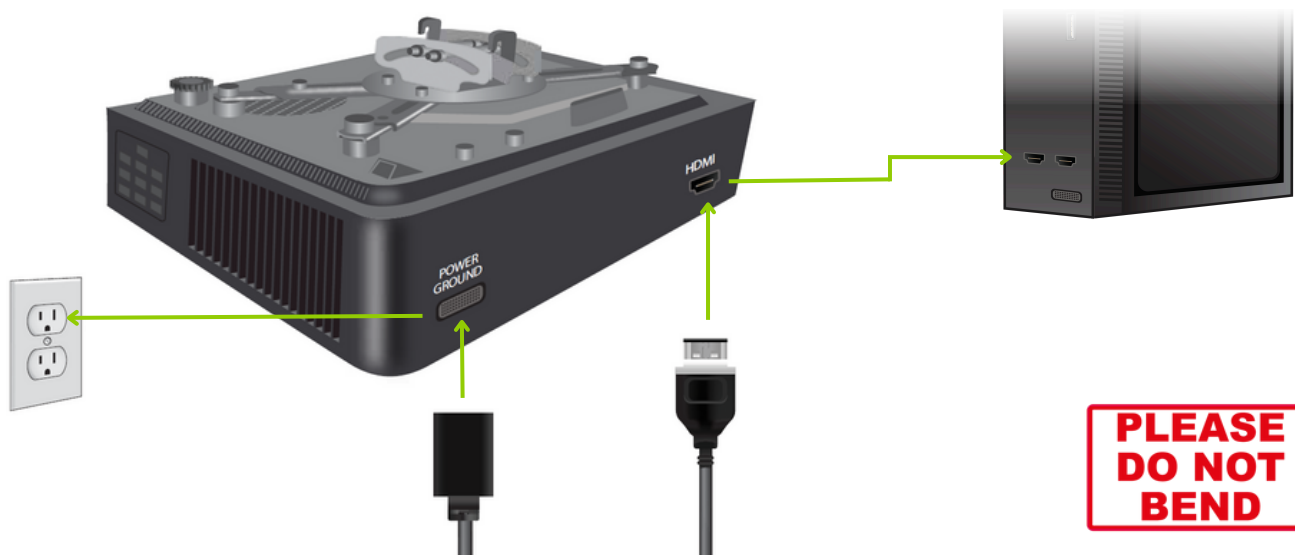
Attach the projector on the projector mount. Refer to the instruction sheet inside the projector box.



3

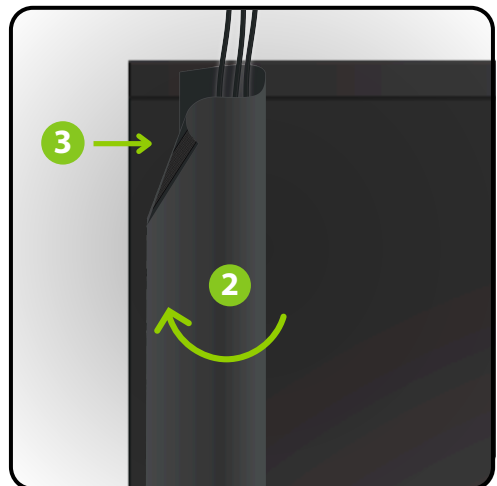
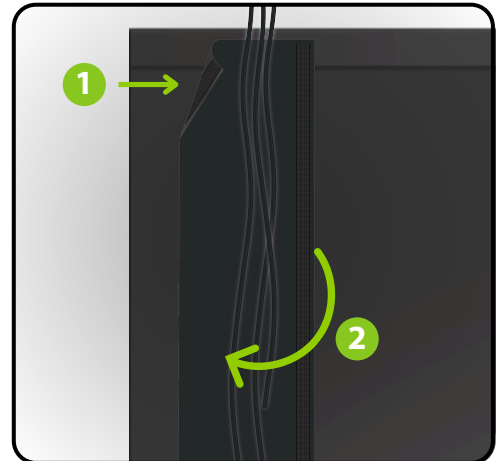
PROJECTOR CABLE CONNECTIONS

Plug the HDMI cable to the HDMI port on your projector and on your PC. Connect the power cable to the ground terminal and your electrical outlet. **Refer to Appendix B, C, D or E for your projector adjustments.**



WIRE COVER

Stick one side of the wire cover to the structure using the Velcro. Gather your wires inside the wire cover and, forming a loop over the wires, stick the second side of the wire cover just in front of your first Velcro.



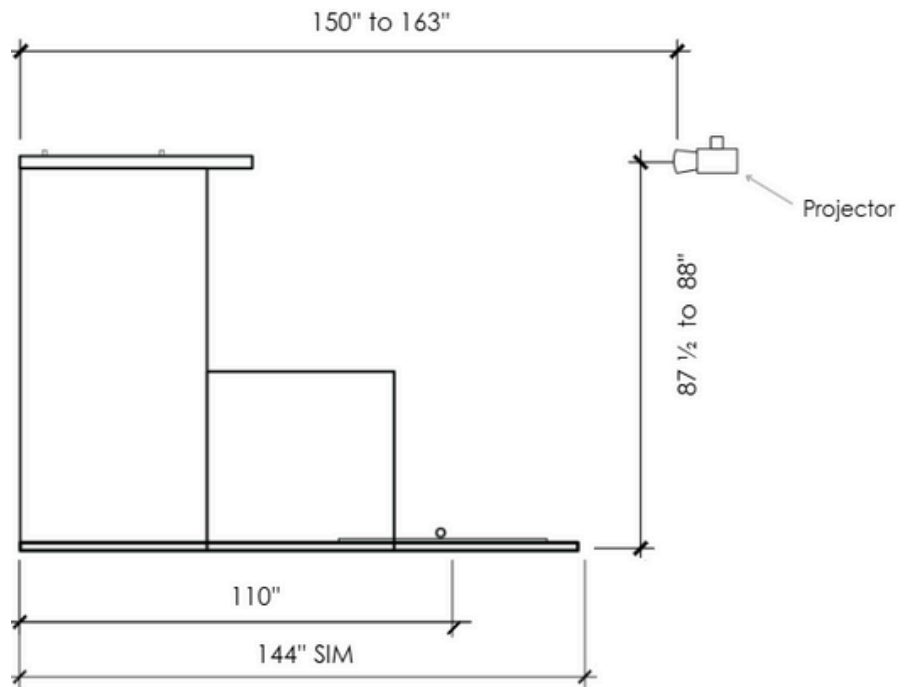
PROJECTOR POSITION ON THE CEILING

Minimum projector distance:
150" (screen to lens)

- At this distance, the projector must be installed at a height of 88" (from the room floor to the center of the lens)

Maximum projector distance:
163" (screen to lens)

- At this distance, the projector must be installed at a height of 87 ½" (from the room floor to the center of the lens)



BENQ AH30ST PROJECTOR AJUSTEMENTS WITH MONITOR

TABLE OF CONTENTS

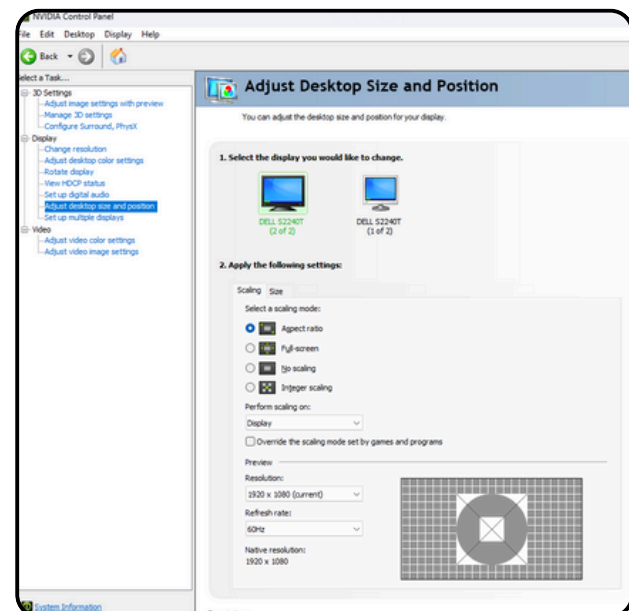
- | | |
|-----------------------------------|--------------------------|
| 1. Select the correct HDMI Source | 4. Projector Settings |
| 2. NVIDIA Control Panel (PC) | 5. Projector Ajustements |
| 3. Windows Display Settings (PC) | |

1.SELECT THE CORRECT HDMI SOURCE

- 1.Turn on the projector and press the 'Source' button on the remote control.
- 2.Use the arrows to navigate to the appropriate HDMI input (HDMI 1 or HDMI 2) and press 'OK' to select.

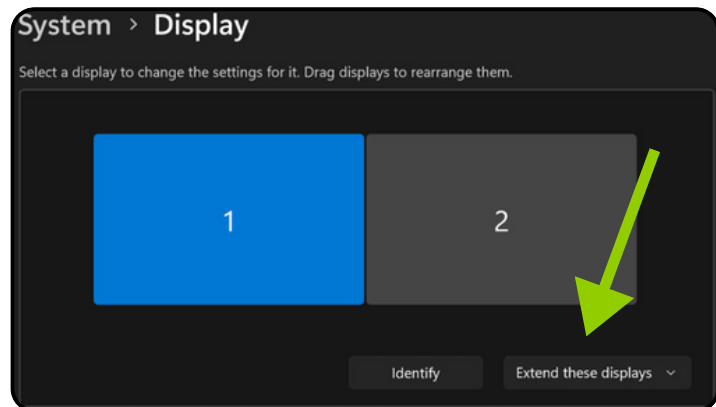
2.WINDOWS DISPLAY SETTINGS (PC)

1. Open the NVIDIA Control Panel & make sure the projector is turned on.
2. Click on "Adjust desktop size and position"
3. Select your monitor
4. Select "Aspect ratio"
5. Keep the resolution at 1920 × 1080
6. Select your projector
7. Select "Aspect ratio"
8. Keep the resolution at 1920 × 1080
9. Click "Apply" at the bottom right of the screen. Then "Yes" to "Apply Changes"



3. WINDOWS DISPLAY SETTINGS (PC)

1. Click Start > Settings
2. Go to System > Display
3. If both screens are detected, you will see two numbered rectangles (1 and 2)
4. Click on Extend these Display (menu below and to the right of the 2 screens)
5. Select "Duplicate these displays"
6. Click "Keep Change"
7. Make sure the display resolution is set to 1920 x 1080



4. PROJECTOR SETTINGS

1. Language: Select the desired language
2. Menu (On the remote) : Menu Type > Choose Advanced
3. Picture> Picture Mode: Select Golf



4. PROJECTOR SETTINGS (CONTINUED)

4. Display > Screen Fill: Choose 16:9 (1920 × 1080)



5. Display > Aspect Ratio : Select 16:10



5. PROJECTOR AJUSTEMENTS

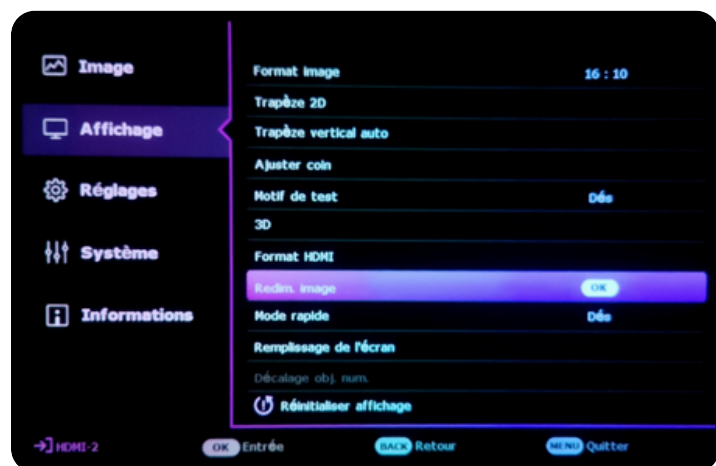
Each environment is unique, so this section may require a bit more time and patience. Depending on your setup (screen size, projector distance, ceiling height, etc.), the adjustments needed can vary significantly from one user to another.

Take the time to explore and combine the different adjustments below to achieve an image perfectly suited to your installation. Don't hesitate to repeat the process multiple times to fine-tune the result to your preferences.

- Zoom: Adjust the image size using the zoom dial under the lens

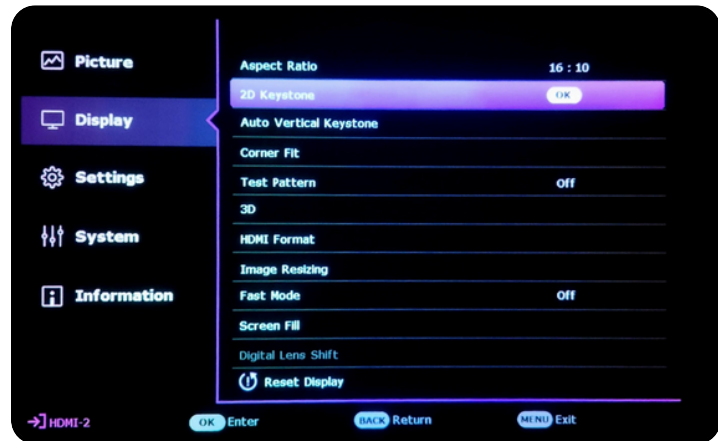


- Display > Image Resizing: Use Digital Shrink & Shift → Adjust the image so that it slightly exceeds the desired size on all sides



5. PROJECTOR AJUSTEMENTS (CONTINUED)

- Display > 2D Keystone: Correct vertical tilt and horizontal shift of the image



- Display > Corner Fit: Fine-tune the image size and position for precise alignment



- Focus: Adjust image sharpness using the focus dial under the lens



BENQ AH30ST PROJECTOR AJUSTEMENTS WITHOUT MONITOR

TABLE OF CONTENTS

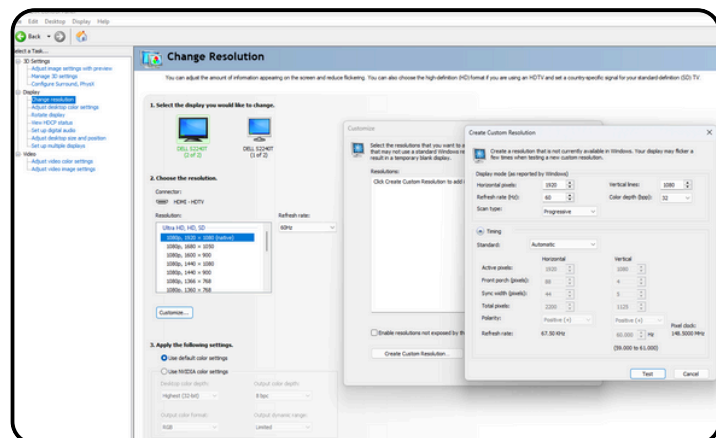
1. Select the correct HDMI Source
2. NVIDIA Control Panel (PC)
3. Windows Display Settings (PC)
4. Projector Settings
5. Projector Ajustements

1.SELECT THE CORRECT HDMI SOURCE

- 1.Turn on the projector and press the 'Source' button on the remote control.
- 2.Use the arrows to navigate to the appropriate HDMI input (HDMI 1 or HDMI 2) and press 'OK' to select.

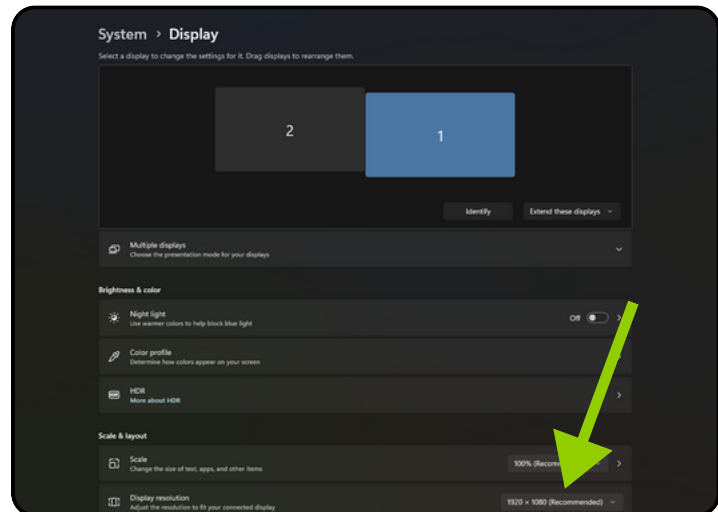
2.WINDOWS DISPLAY SETTINGS (PC)

1. Open the NVIDIA Control Panel
2. Click on Change resolution:
Customise > Create custom resolution
3. Under Display mode (as reported by Windows), Change :
 - Horizontal pixels to 1547
 - Vertical Lines to 1080
4. Click on Test > Apply change > Yes
5. Click on Adjust desktop size and position:
6. Select "Aspect ratio" (The projector must be turned on beforehand)
7. Change the Resolution to 1547 × 1080
8. Click "Apply" at the bottom right of the screen. Then "Yes" to "Apply Changes"



3. WINDOWS DISPLAY SETTINGS (PC)

1. Click Start > Settings
2. Go to System > Display
3. Make sure the display resolution is set to 1547 × 1080
4. If not, change it & Click "Yes" to Keep these display setting



4. PROJECTOR SETTINGS

1. Language: Select the desired language
2. Menu (On the remote) : Menu Type > Choose Advanced
3. Picture> Picture Mode: Select Golf



4. PROJECTOR SETTINGS (CONTINUED)

4. Display > Screen Fill: Choose 16:9 (1920 × 1080)



5. Display > Aspect Ratio : Select 16:10



5. PROJECTOR AJUSTEMENTS

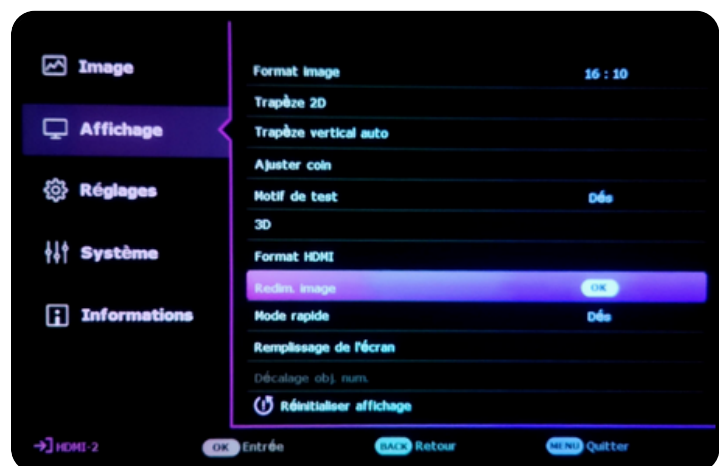
Each environment is unique, so this section may require a bit more time and patience. Depending on your setup (screen size, projector distance, ceiling height, etc.), the adjustments needed can vary significantly from one user to another.

Take the time to explore and combine the different adjustments below to achieve an image perfectly suited to your installation. Don't hesitate to repeat the process multiple times to fine-tune the result to your preferences.

- Zoom: Adjust the image size using the zoom dial under the lens

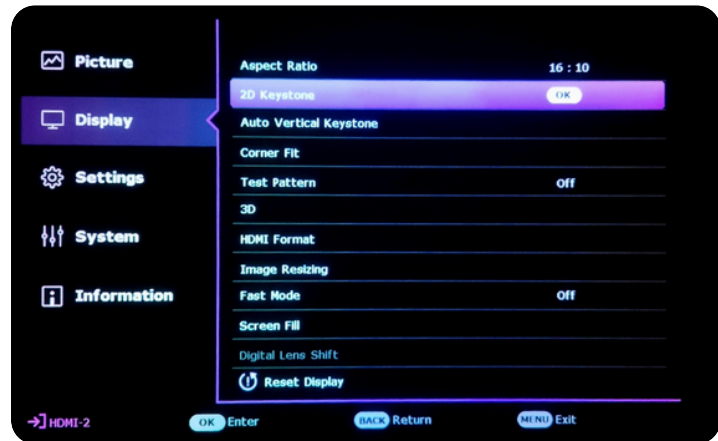


- Display > Image Resizing: Use Digital Shrink & Shift → Adjust the image so that it slightly exceeds the desired size on all sides

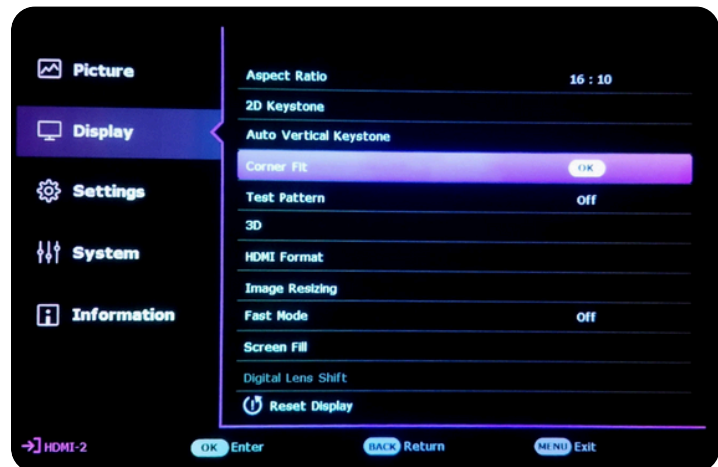


5. PROJECTOR AJUSTEMENTS (CONTINUED)

- Display > 2D Keystone: Correct vertical tilt and horizontal shift of the image



- Display > Corner Fit: Fine-tune the image size and position for precise alignment



- Focus: Adjust image sharpness using the focus dial under the lens



BENQ AK700ST PROJECTOR AJUSTEMENTS **WITH MONITOR**

TABLE OF CONTENTS

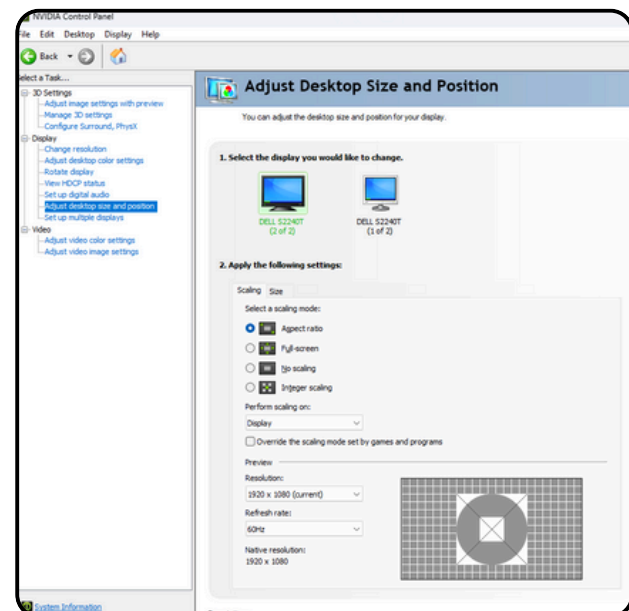
- | | |
|-----------------------------------|--------------------------|
| 1. Select the correct HDMI Source | 4. Projector Settings |
| 2. NVIDIA Control Panel (PC) | 5. Projector Ajustements |
| 3. Windows Display Settings (PC) | |

1.SELECT THE CORRECT HDMI SOURCE

- 1.Turn on the projector and press the 'Source' button on the remote control.
- 2.Use the arrows to navigate to the appropriate HDMI input (HDMI 1 or HDMI 2) and press 'OK' to select.

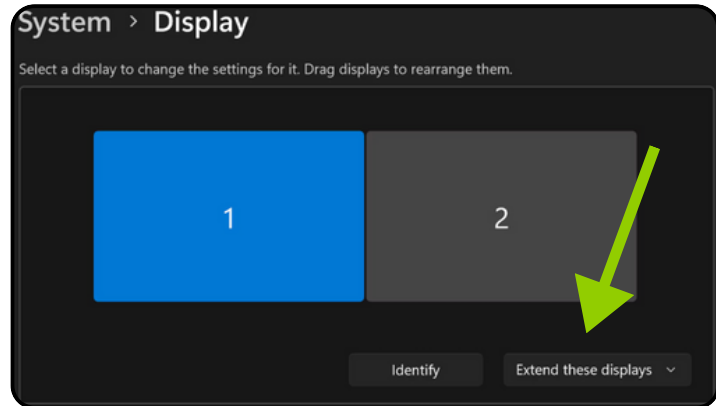
2.WINDOWS DISPLAY SETTINGS (PC)

1. Open the NVIDIA Control Panel & make sure the projector is turned on.
2. Click on "Adjust desktop size and position"
3. Select your monitor
4. Select "Aspect ratio"
5. Keep the resolution at 1920 × 1080
6. Select your projector
7. Select "Aspect ratio"
8. Keep the resolution at 1920 × 1080
9. Click "Apply" at the bottom right of the screen. Then "Yes" to "Apply Changes"



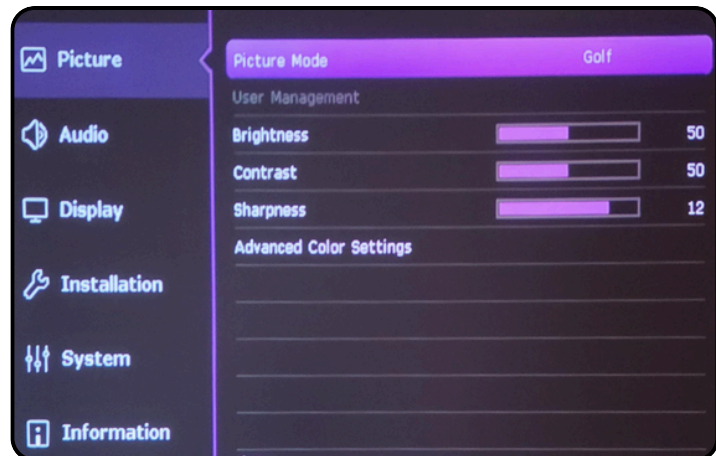
3. WINDOWS DISPLAY SETTINGS (PC)

1. Click Start > Settings
2. Go to System > Display
3. If both screens are detected, you will see two numbered rectangles (1 and 2)
4. Click on Extend these Display (menu below and to the right of the 2 screens)
5. Select "Duplicate these displays"
6. Click "Keep Change"
7. Make sure the display resolution is set to 1920 x 1080

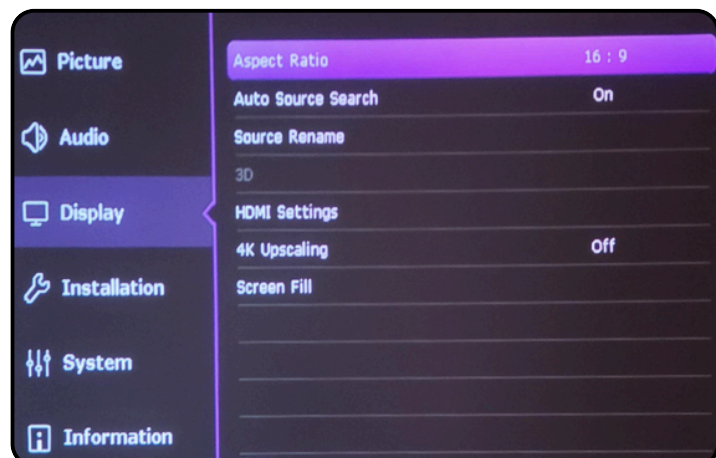


4. PROJECTOR SETTINGS

1. Turn on your Projector
2. Auto Screen Fit / Ok
3. Menu / Select Projector Position
4. Language: Select the desired language
5. Press Menu (On the remote) : Menu Type / Choose Advanced
6. Picture / Picture Mode: Select Golf



7. Display / Aspect Ratio / 16:9



5. PROJECTOR AJUSTEMENTS

Each environment is unique, so this section may require a bit more time and patience. Depending on your setup (screen size, projector distance, ceiling height, etc.), the adjustments needed can vary significantly from one user to another.

Take the time to explore and combine the different adjustments below to achieve an image perfectly suited to your installation. Don't hesitate to repeat the process multiple times to fine-tune the result to your preferences.

- Installation / Image Resize / Digital Shrink & Shift



- Installation / Geometry / Corner Fit :
Fine-tune the image size and position for precise alignment

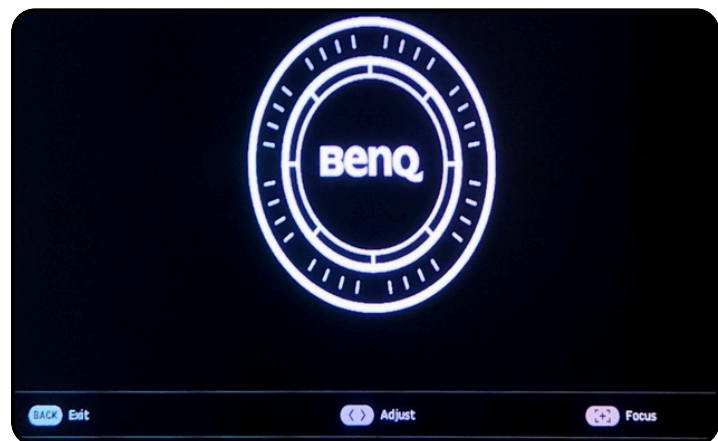


5. PROJECTOR AJUSTEMENTS (CONTINUED)

- Installation / Focus / Focus / Ok



- After the auto-focus, fine-tune the focus using the left and right arrows on the remote.



BENQ AK700ST PROJECTOR AJUSTEMENTS WITHOUT MONITOR

TABLE OF CONTENTS

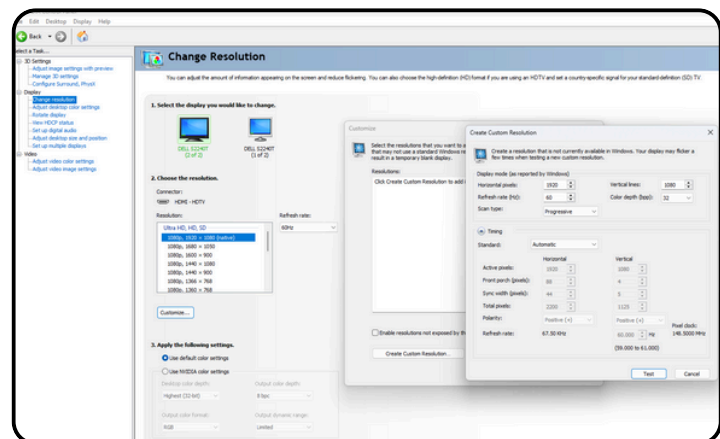
1. Select the correct HDMI Source
2. NVIDIA Control Panel (PC)
3. Windows Display Settings (PC)
4. Projector Settings
5. Projector Ajustements

1.SELECT THE CORRECT HDMI SOURCE

- 1.Turn on the projector and press the 'Source' button on the remote control.
- 2.Use the arrows to navigate to the appropriate HDMI input (HDMI 1 or HDMI 2) and press 'OK' to select.

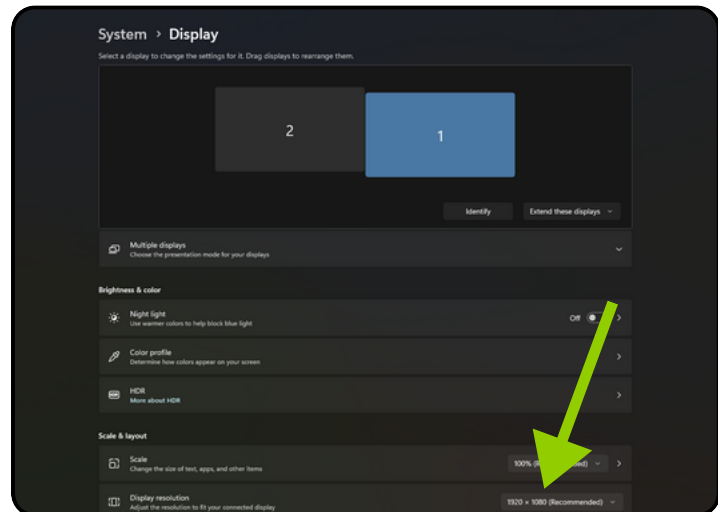
2.WINDOWS DISPLAY SETTINGS (PC)

1. Open the NVIDIA Control Panel
2. Click on Change resolution:
Customise > Create custom resolution
3. Under Display mode (as reported by Windows), Change :
 - Horizontal pixels to 1547
 - Vertical Lines to 1080
4. Click on Test > Apply change > Yes
5. Click on Adjust desktop size and position:
6. Select "Full screen" (The projector must be turned on beforehand)
7. Change the Resolution to 1547 × 1080
8. Click "Apply" at the bottom right of the screen. Then "Yes" to "Apply Changes"



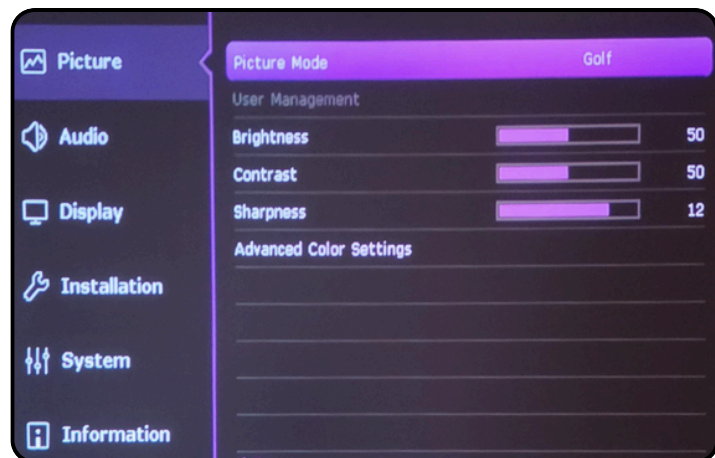
3. WINDOWS DISPLAY SETTINGS (PC)

1. Click Start > Settings
2. Go to System > Display
3. Make sure the display resolution is set to 1547 × 1080
4. If not, change it & Click "Yes" to keep these display setting

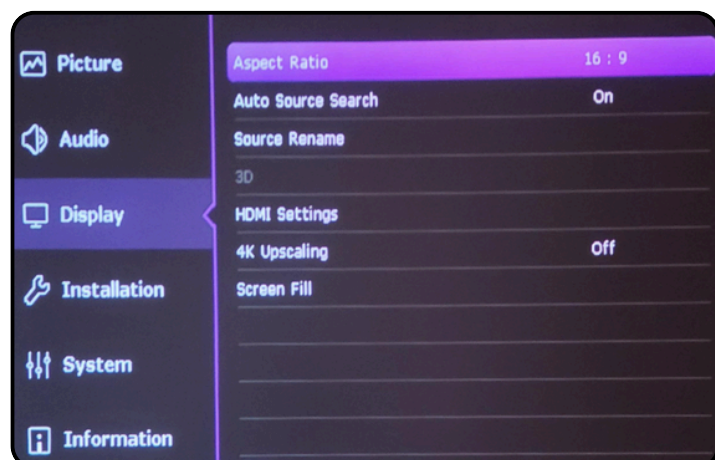


4. PROJECTOR SETTINGS

1. Turn on your Projector
2. Auto Screen Fit / Ok
3. Menu / Select Projector Position
4. Language: Select the desired language
5. Press Menu (On the remote) : Menu Type / Choose Advanced
6. Picture / Picture Mode: Select Golf



7. Display / Aspect Ratio / 16:9



5. PROJECTOR AJUSTEMENTS

Each environment is unique, so this section may require a bit more time and patience. Depending on your setup (screen size, projector distance, ceiling height, etc.), the adjustments needed can vary significantly from one user to another.

Take the time to explore and combine the different adjustments below to achieve an image perfectly suited to your installation. Don't hesitate to repeat the process multiple times to fine-tune the result to your preferences.

- Installation / Image Resize / Digital Shrink & Shift



- Installation / Geometry / Corner Fit :
Fine-tune the image size and position for precise alignment



5. PROJECTOR AJUSTEMENTS (CONTINUED)

- Installation / Focus / Focus / Ok



- After the auto-focus, fine-tune the focus using the left and right arrows on the remote.

