



INSTALLATION GUIDE

SIMBOOTH 1

TABLE OF CONTENTS

Parts list 3-4

Structure installation 5-7

Floor installation 8

Half walls installation 8

Electronics installation 9

Cable connections 10

Appendix A 11

Appendix B 12-16

Appendix C 17-21

Appendix D 22-25

Appendix E 26-29



PARTS LIST

WALL PANELS

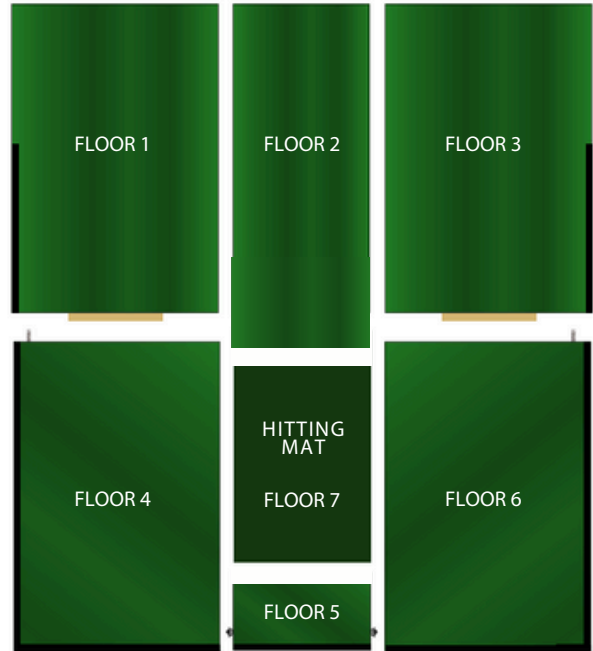
LEFT WALLS



RIGHT WALLS



FLOOR PANELS



CEILING PANELS



PARTS LIST

ACCESSORIES

Bolts



3-1/2" (6x)

Wing Nuts (2x)



Washer (32x)



Nuts (26x)



Hitting mat



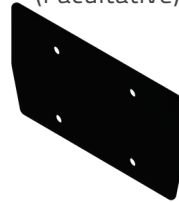
Black impact screen



Scissor Bar



Elevating bracket
(Facultative)



White screen



Bolts



2" (2x)

Tees (10x)



Black Bolts
(Facultative)



2" (2x)

OPTIONALS

Half-Walls
(2x)



Projector & Remote



Projector Beam



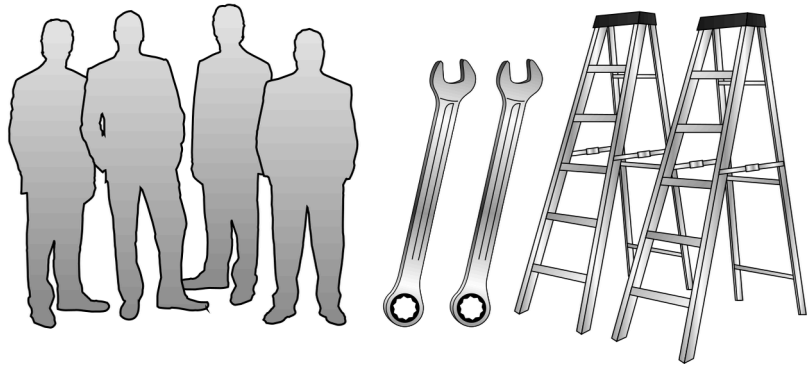
Wire Cover



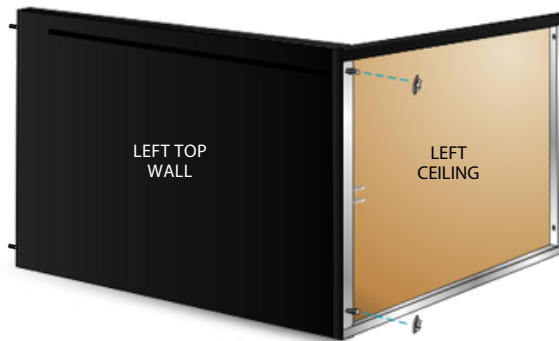
END OF PARTS LIST

BEFORE STARTING

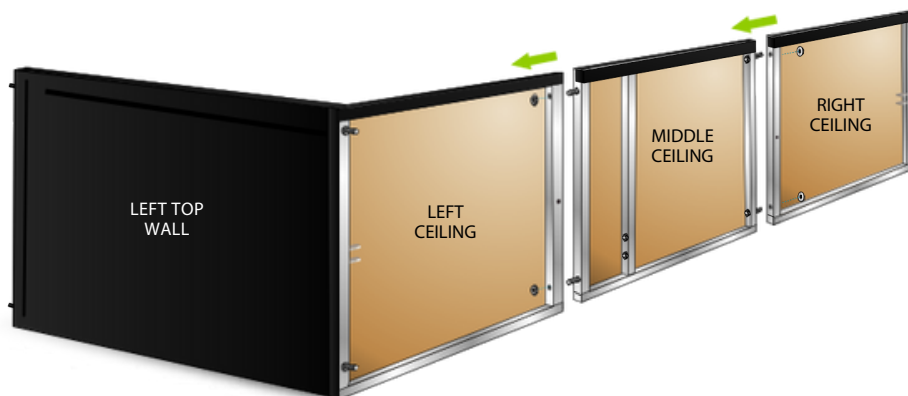
You will need 4 people, two ladders, and two 1/2" wrenches.


1

Fix the left top wall to the left ceiling with the nuts.

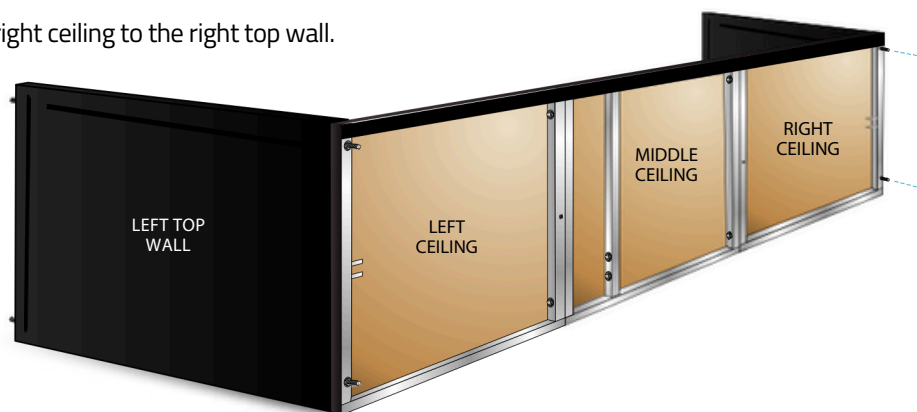

2

Using the nuts, fix the middle ceiling to the left ceiling, then fix the right ceiling to the middle ceiling.



3

Using the nuts, fix the right ceiling to the right top wall.



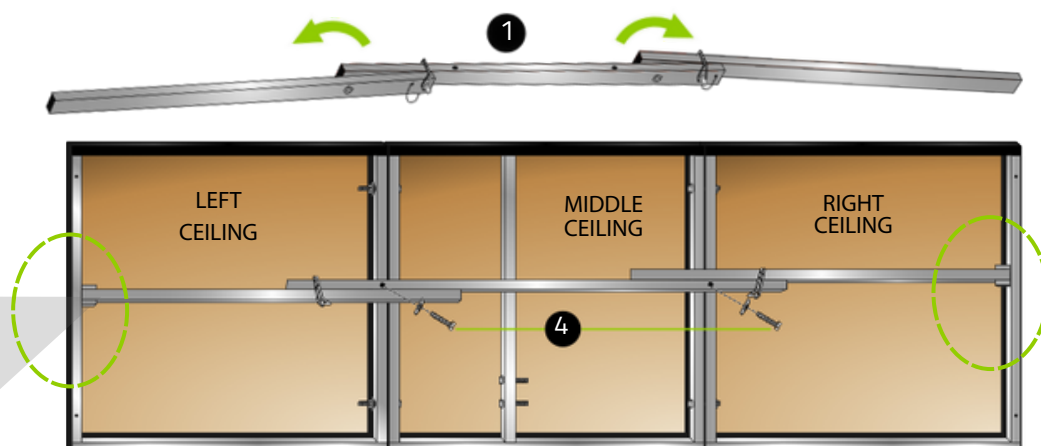
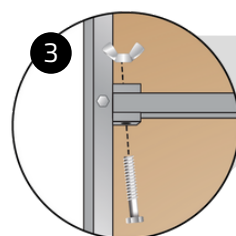
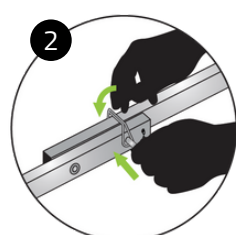
4

Fix the bottom wall panels to the top wall panels with the nuts by removing the bottom wall covers (Velcro).



5

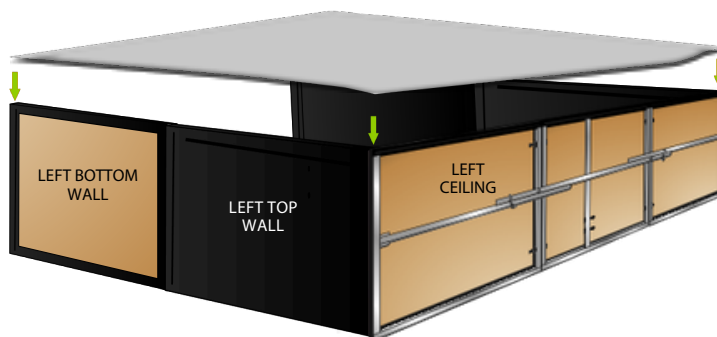
Assemble the ceiling truss with bolts and security pins.



IT IS IMPORTANT TO COMPLETE THIS STEP BEFORE LIFTING THE STRUCTURE.

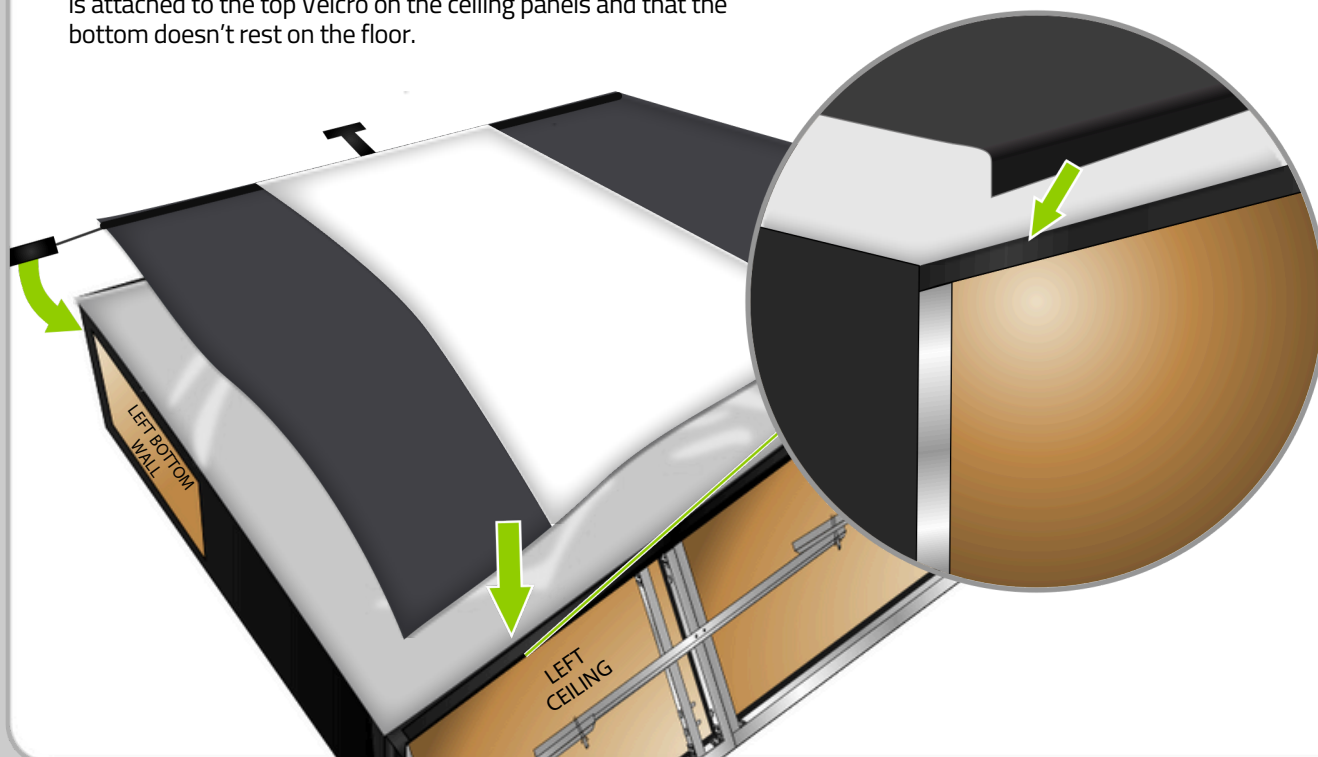
6

Attach the white screen to the structure.



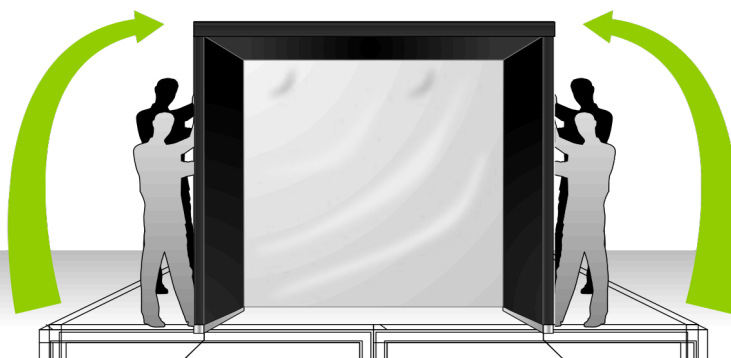
7

Attach the black impact netting over the white screen. Make sure it is attached to the top Velcro on the ceiling panels and that the bottom doesn't rest on the floor.



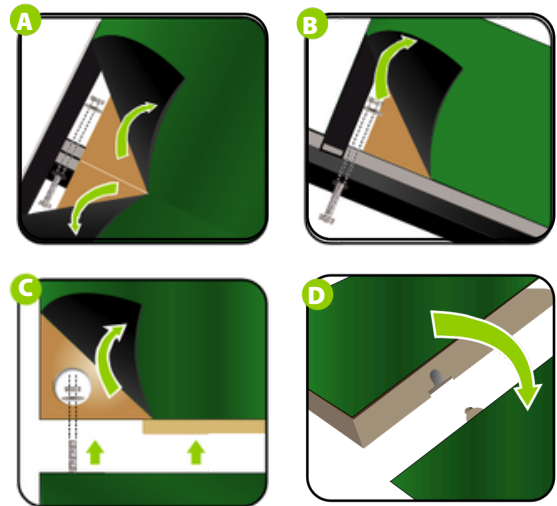
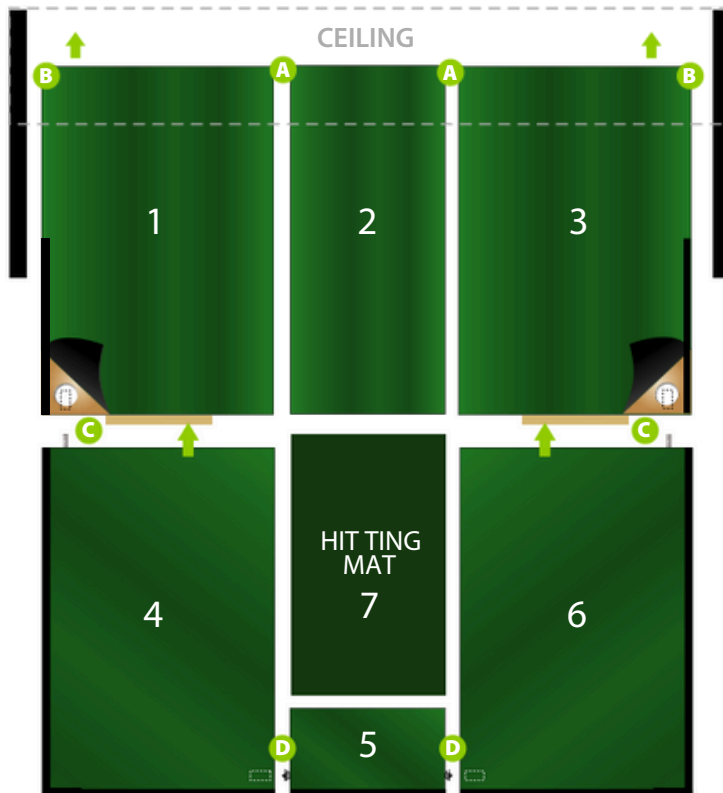
8

Lift the structure with 4 people.



1

Install the floor sections in order (1 to 7). A and B you will need bolts washers and nuts. C you will need washers and nuts.



2

Step 1

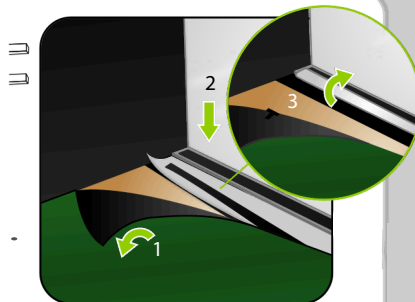
Lift green carpet.

Step 2

Stretch the white screen behind and under the aluminum bar and reach for it through the space.

Step 3

Stick it on the first half of the aluminum bar velcro.



HALF-WALLS INSTALLATION (IF INCLUDED)

Simply cut through the black carpet at 4 inches and 38 inches from the floor to access the pre-drill holes and insert the half-walls. Attach the half-wall panels to the structure with washers and nuts.

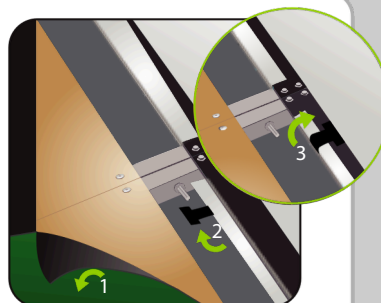
3

Step 1

Lift green carpet.

Step 2

Stretch the black netting behind and under the aluminum bar and attach it on the remaining half of the aluminum bar using the T shaped Velcro.

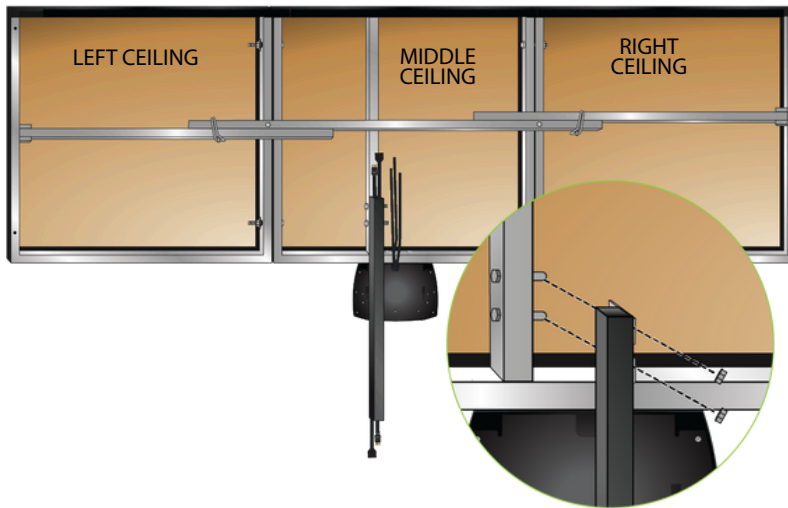


1

PROJECTOR BEAM INSTALLATION

Attach the projector beam to the ceiling structure with washers and nuts.

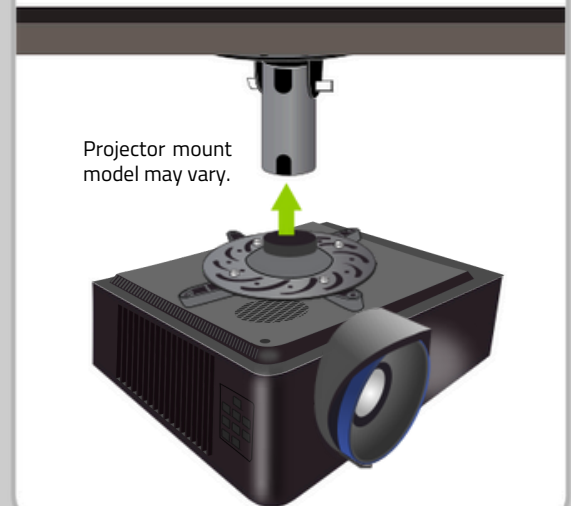
***If you are not using the projector beam attached to the structure, please refer to Appendix A for the recommended projector position.**



2

PROJECTOR INSTALLATION

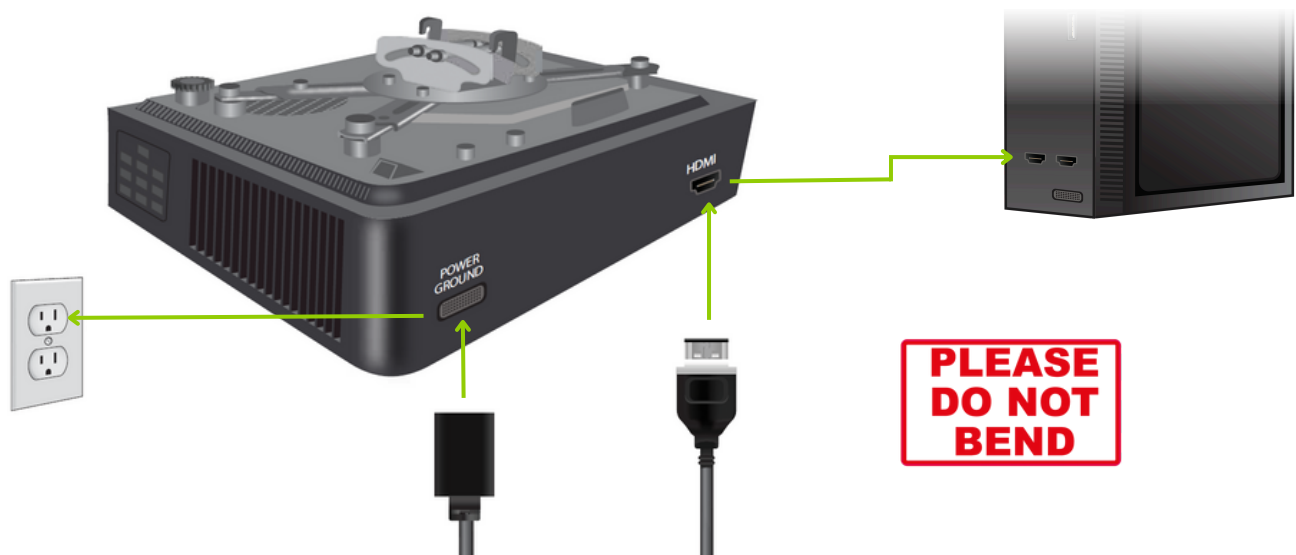
Attach the projector on the projector mount. Refer to the instruction sheet inside the projector box.



3

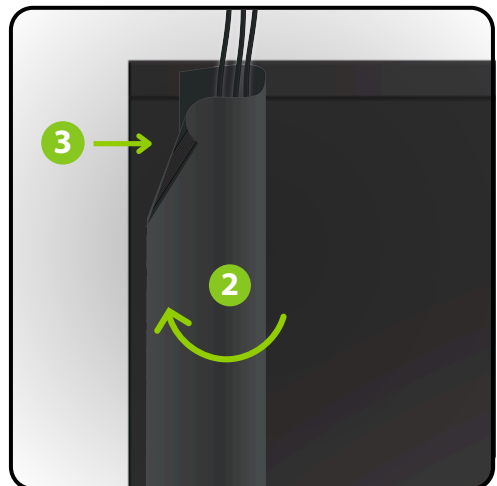
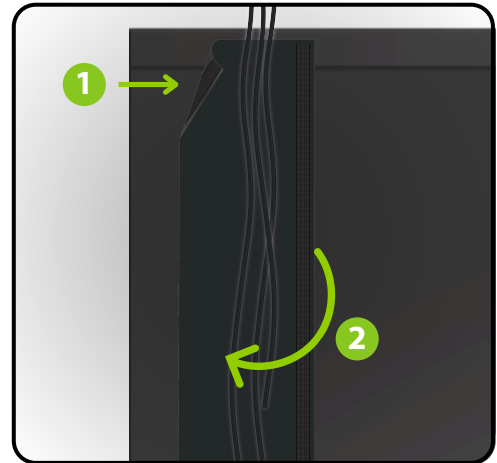
PROJECTOR CABLE CONNECTIONS

Plug the HDMI cable to the HDMI port on your projector and on your PC. Connect the power cable to the ground terminal and your electrical outlet. **Refer to Appendix B, C, D or E for your projector adjustments.**



WIRE COVER

Stick one side of the wire cover to the structure using the Velcro. Gather your wires inside the wire cover and, forming a loop over the wires, stick the second side of the wire cover just in front of your first Velcro.



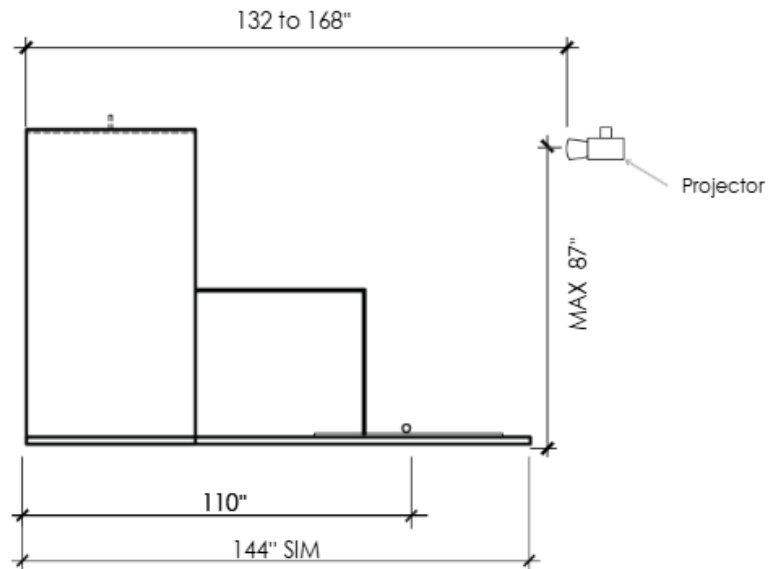
1

PROJECTOR POSITION ON THE CEILING

Minimum projector distance:
132" (screen to lens)

Maximum projector distance:
168" (screen to lens)

- Within this range, the projector must be positioned at a maximum height of 87" (from the room floor to the center of the lens)



BENQ AH30ST PROJECTOR AJUSTEMENTS WITH MONITOR

TABLE OF CONTENTS

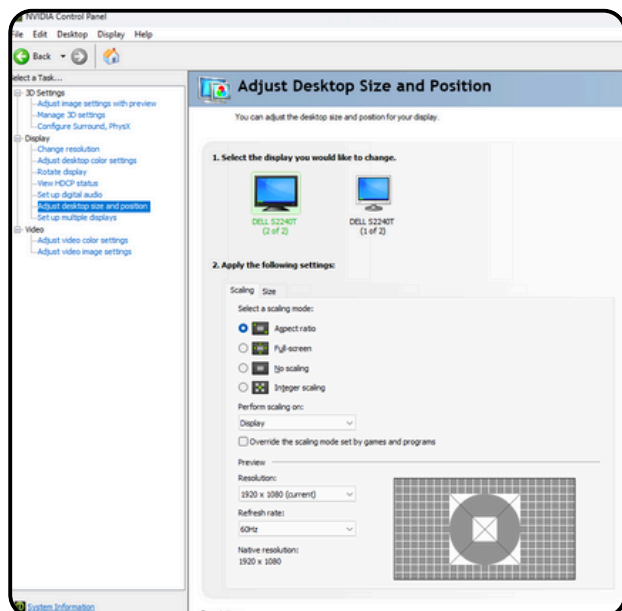
- | | |
|-----------------------------------|--------------------------|
| 1. Select the correct HDMI Source | 4. Projector Settings |
| 2. NVIDIA Control Panel (PC) | 5. Projector Ajustements |
| 3. Windows Display Settings (PC) | |

1.SELECT THE CORRECT HDMI SOURCE

- 1.Turn on the projector and press the 'Source' button on the remote control.
- 2.Use the arrows to navigate to the appropriate HDMI input (HDMI 1 or HDMI 2) and press 'OK' to select.

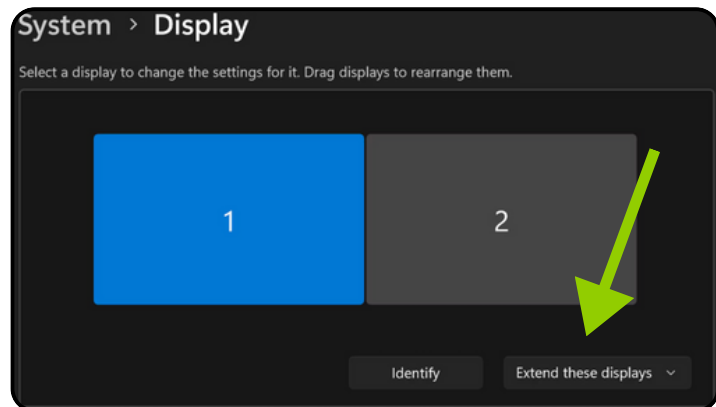
2.WINDOWS DISPLAY SETTINGS (PC)

1. Open the NVIDIA Control Panel & make sure the projector is turned on.
2. Click on "Adjust desktop size and position"
3. Select your monitor
4. Select "Aspect ratio"
5. Keep the resolution at 1920 × 1080
6. Select your projector
7. Select "Aspect ratio"
8. Keep the resolution at 1920 × 1080
9. Click "Apply" at the bottom right of the screen. Then "Yes" to "Apply Changes"



3. WINDOWS DISPLAY SETTINGS (PC)

1. Click Start > Settings
2. Go to System > Display
3. If both screens are detected, you will see two numbered rectangles (1 and 2)
4. Click on Extend these Display (menu below and to the right of the 2 screens)
5. Select "Duplicate these displays"
6. Click "Keep Change"
7. Make sure the display resolution is set to 1920 x 1080



4. PROJECTOR SETTINGS

1. Language: Select the desired language
2. Menu (On the remote) : Menu Type > Choose Advanced
3. Picture> Picture Mode: Select Golf

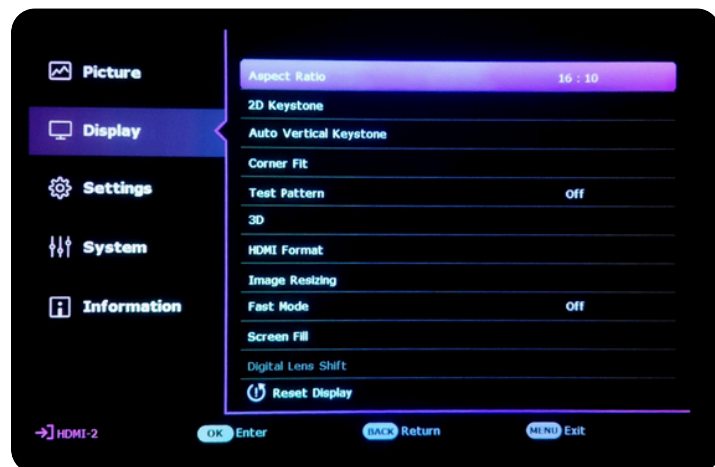


4. PROJECTOR SETTINGS (CONTINUED)

4. Display > Screen Fill: Choose 16:9 (1920 × 1080)



5. Display > Aspect Ratio : Select 16:10



5. PROJECTOR AJUSTEMENTS

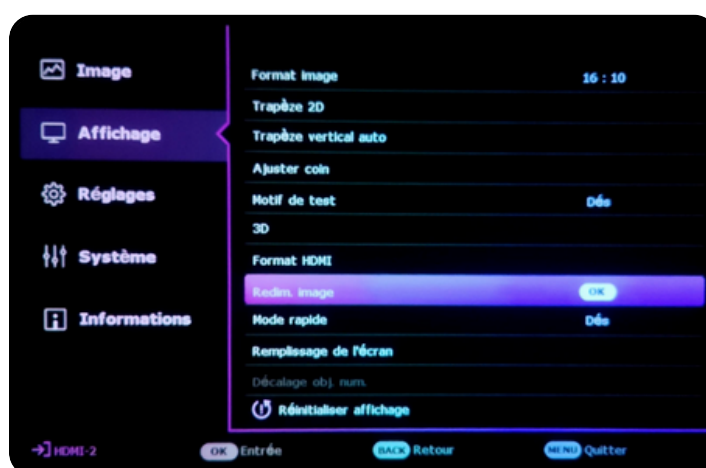
Each environment is unique, so this section may require a bit more time and patience. Depending on your setup (screen size, projector distance, ceiling height, etc.), the adjustments needed can vary significantly from one user to another.

Take the time to explore and combine the different adjustments below to achieve an image perfectly suited to your installation. Don't hesitate to repeat the process multiple times to fine-tune the result to your preferences.

- Zoom: Adjust the image size using the zoom dial under the lens



- Display > Image Resizing: Use Digital Shrink & Shift → Adjust the image so that it slightly exceeds the desired size on all sides

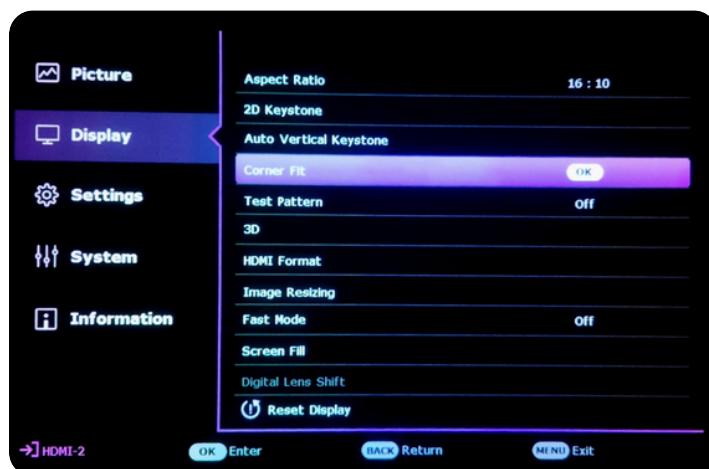


5. PROJECTOR AJUSTEMENTS (CONTINUED)

- Display > 2D Keystone: Correct vertical tilt and horizontal shift of the image



- Display > Corner Fit: Fine-tune the image size and position for precise alignment



- Focus: Adjust image sharpness using the focus dial under the lens



BENQ AH30ST PROJECTOR AJUSTEMENTS **WITHOUT MONITOR**

TABLE OF CONTENTS

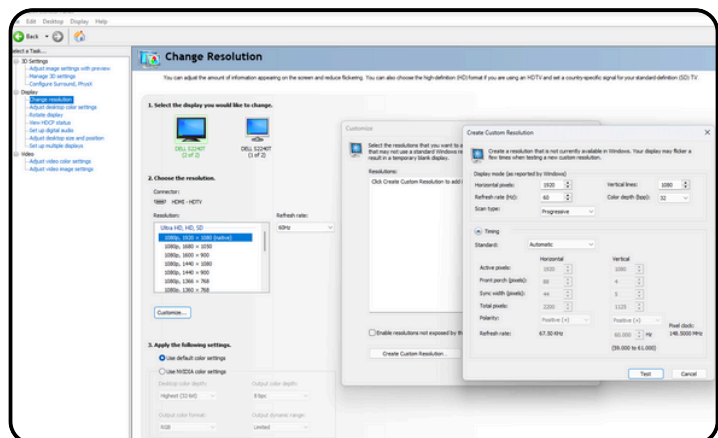
1. Select the correct HDMI Source
2. NVIDIA Control Panel (PC)
3. Windows Display Settings (PC)
4. Projector Settings
5. Projector Ajustements

1.SELECT THE CORRECT HDMI SOURCE

- 1.Turn on the projector and press the 'Source' button on the remote control.
- 2.Use the arrows to navigate to the appropriate HDMI input (HDMI 1 or HDMI 2) and press 'OK' to select.

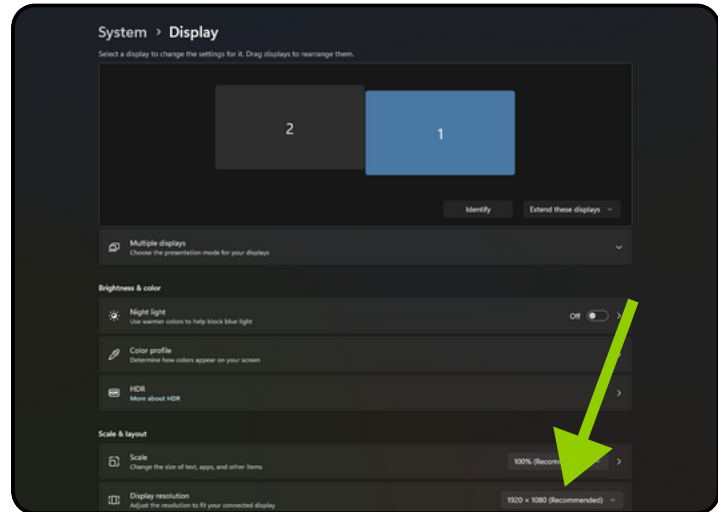
2.WINDOWS DISPLAY SETTINGS (PC)

1. Open the NVIDIA Control Panel
2. Click on Change resolution:
Customise > Create custom resolution
3. Under Display mode (as reported by Windows), Change :
 - Horizontal pixels to 1547
 - Vertical Lines to 1080
4. Click on Test > Apply change > Yes
5. Click on Adjust desktop size and position:
6. Select "Aspect ratio" (The projector must be turned on beforehand)
7. Change the Resolution to 1547 × 1080
8. Click "Apply" at the bottom right of the screen. Then "Yes" to "Apply Changes"



3. WINDOWS DISPLAY SETTINGS (PC)

1. Click Start > Settings
2. Go to System > Display
3. Make sure the display resolution is set to 1547 × 1080
4. If not, change it & Click "Yes" to Keep these display setting



4. PROJECTOR SETTINGS

1. Language: Select the desired language
2. Menu (On the remote) : Menu Type > Choose Advanced
3. Picture> Picture Mode: Select Golf

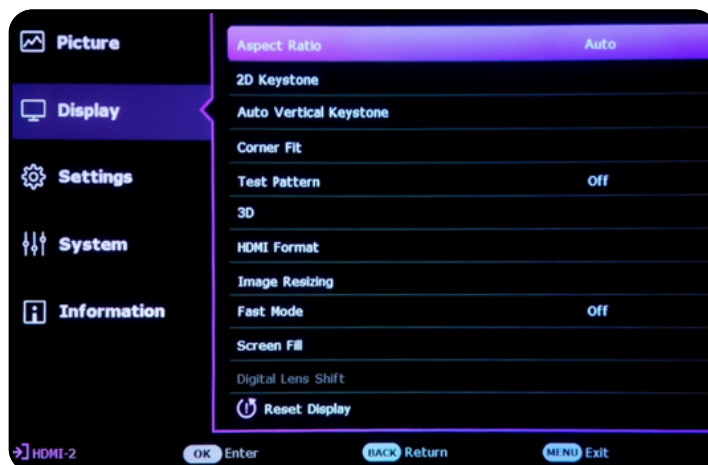


4. PROJECTOR SETTINGS (CONTINUED)

4. Display > Screen Fill: Choose 16:9 (1920 × 1080)



5. Display > Aspect Ratio : Select "Auto"



5. PROJECTOR AJUSTEMENTS

Each environment is unique, so this section may require a bit more time and patience. Depending on your setup (screen size, projector distance, ceiling height, etc.), the adjustments needed can vary significantly from one user to another.

Take the time to explore and combine the different adjustments below to achieve an image perfectly suited to your installation. Don't hesitate to repeat the process multiple times to fine-tune the result to your preferences.

- Zoom: Adjust the image size using the zoom dial under the lens

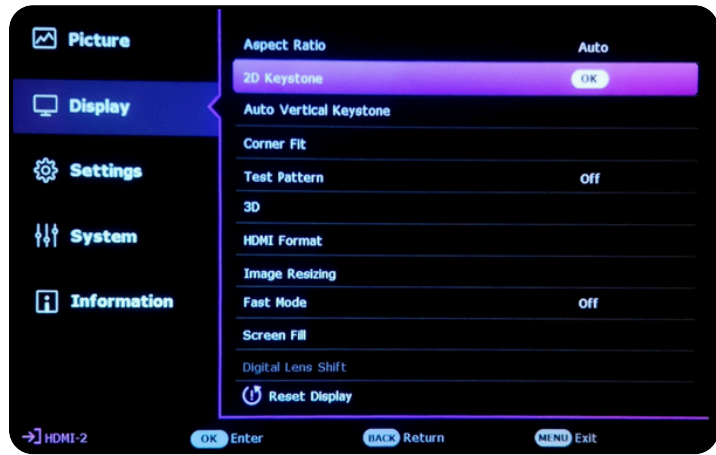


- Display > Image Resizing: Use Digital Shrink & Shift → Adjust the image so that it slightly exceeds the desired size on all sides



5. PROJECTOR AJUSTEMENTS (CONTINUED)

- Display > 2D Keystone: Correct vertical tilt and horizontal shift of the image



- Display > Corner Fit: Fine-tune the image size and position for precise alignment



- Focus: Adjust image sharpness using the focus dial under the lens



BENQ AK700ST PROJECTOR AJUSTEMENTS **WITH MONITOR**

TABLE OF CONTENTS

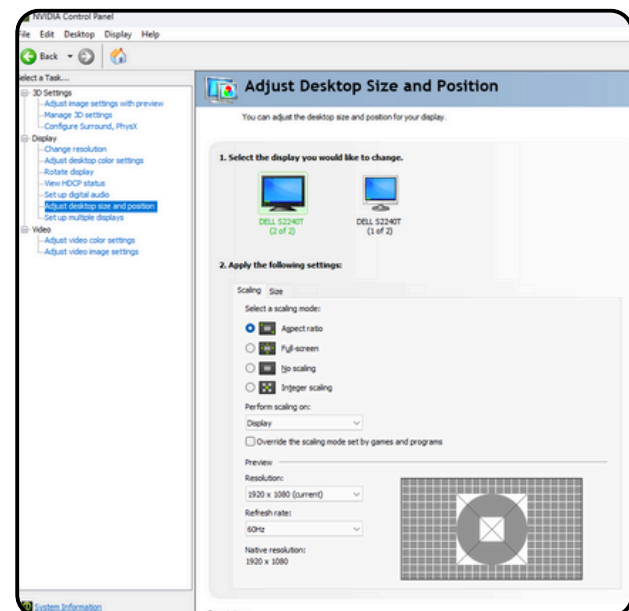
1. Select the correct HDMI Source
2. NVIDIA Control Panel (PC)
3. Windows Display Settings (PC)
4. Projector Settings
5. Projector Ajustements

1.SELECT THE CORRECT HDMI SOURCE

1. Turn on the projector and press the 'Source' button on the remote control.
2. Use the arrows to navigate to the appropriate HDMI input (HDMI 1 or HDMI 2) and press 'OK' to select.

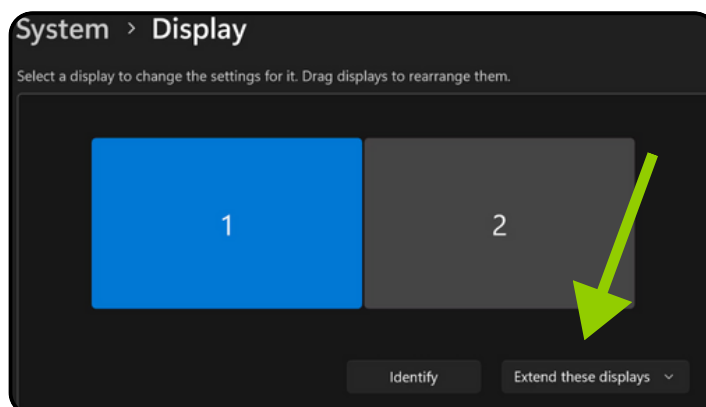
2.WINDOWS DISPLAY SETTINGS (PC)

1. Open the NVIDIA Control Panel & make sure the projector is turned on.
2. Click on "Adjust desktop size and position"
3. Select your monitor
4. Select "Aspect ratio"
5. Keep the resolution at 1920 × 1080
6. Select your projector
7. Select "Aspect ratio"
8. Keep the resolution at 1920 × 1080
9. Click "Apply" at the bottom right of the screen. Then "Yes" to "Apply Changes"



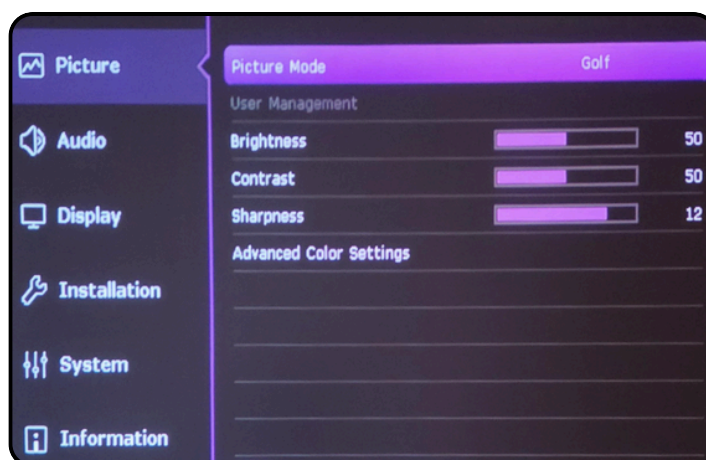
3. WINDOWS DISPLAY SETTINGS (PC)

1. Click Start > Settings
2. Go to System > Display
3. If both screens are detected, you will see two numbered rectangles (1 and 2)
4. Click on Extend these Display (menu below and to the right of the 2 screens)
5. Select "Duplicate these displays"
6. Click "Keep Change"
7. Make sure the display resolution is set to 1920 x 1080

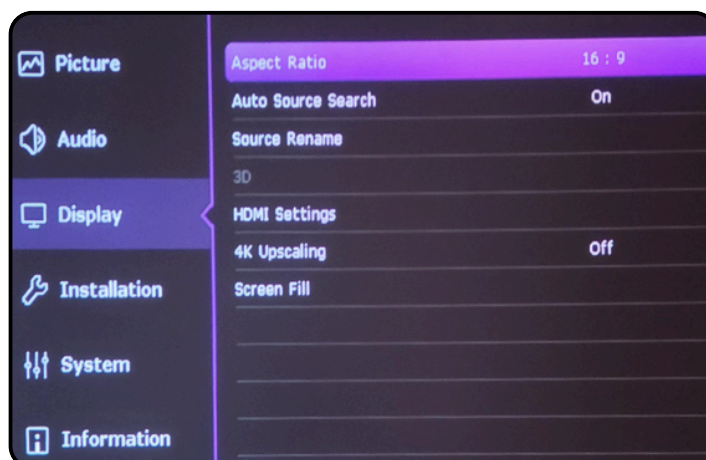


4. PROJECTOR SETTINGS

1. Turn on your Projector
2. Auto Screen Fit / Ok
3. Menu / Select Projector Position
4. Language: Select the desired language
5. Press Menu (On the remote) : Menu Type / Choose Advanced
6. Picture / Picture Mode: Select Golf



7. Display / Aspect Ratio / 16:9



5. PROJECTOR AJUSTEMENTS

Each environment is unique, so this section may require a bit more time and patience. Depending on your setup (screen size, projector distance, ceiling height, etc.), the adjustments needed can vary significantly from one user to another.

Take the time to explore and combine the different adjustments below to achieve an image perfectly suited to your installation. Don't hesitate to repeat the process multiple times to fine-tune the result to your preferences.

- Installation / Image Resize / Digital Shrink & Shift



- Installation / Geometry / Corner Fit :
Fine-tune the image size and position for precise alignment

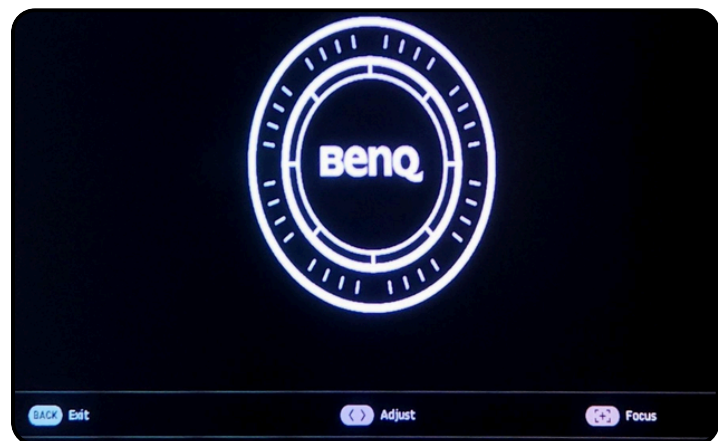


5. PROJECTOR AJUSTEMENTS (CONTINUED)

- Installation / Focus / Focus / Ok



- After the auto-focus, fine-tune the focus using the left and right arrows on the remote.



BENQ AK700ST PROJECTOR AJUSTEMENTS WITHOUT MONITOR

TABLE OF CONTENTS

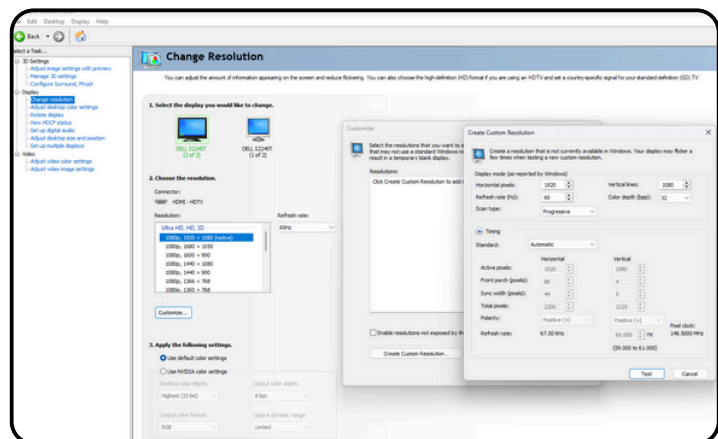
1. Select the correct HDMI Source
2. NVIDIA Control Panel (PC)
3. Windows Display Settings (PC)
4. Projector Settings
5. Projector Ajustements

1.SELECT THE CORRECT HDMI SOURCE

- 1.Turn on the projector and press the 'Source' button on the remote control.
- 2.Use the arrows to navigate to the appropriate HDMI input (HDMI 1 or HDMI 2) and press 'OK' to select.

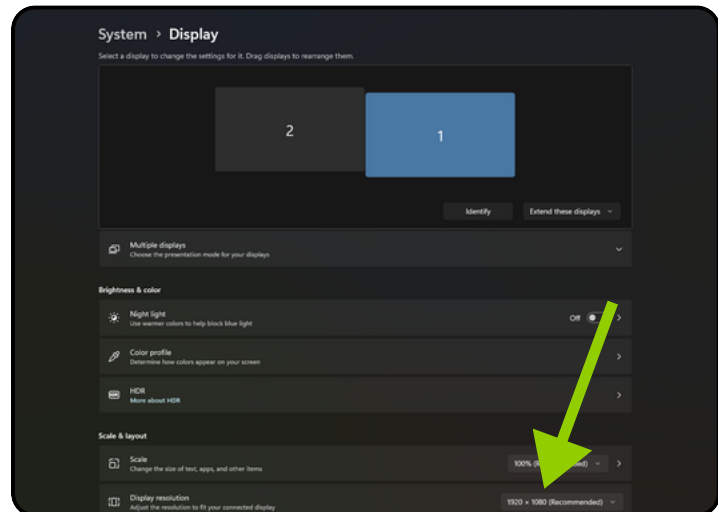
2.WINDOWS DISPLAY SETTINGS (PC)

1. Open the NVIDIA Control Panel
2. Click on Change resolution:
Customise > Create custom resolution
3. Under Display mode (as reported by Windows), Change :
 - Horizontal pixels to 1547
 - Vertical Lines to 1080
4. Click on Test > Apply change > Yes
5. Click on Adjust desktop size and position:
6. Select "Full screen" (The projector must be turned on beforehand)
7. Change the Resolution to 1547 × 1080
8. Click "Apply" at the bottom right of the screen. Then "Yes" to "Apply Changes"



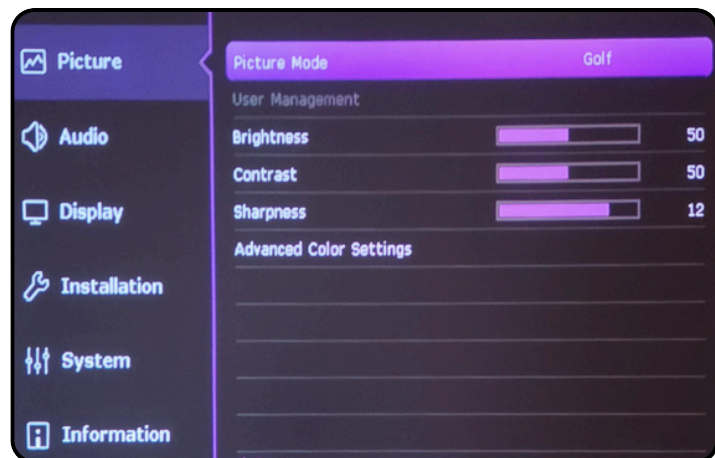
3. WINDOWS DISPLAY SETTINGS (PC)

1. Click Start > Settings
2. Go to System > Display
3. Make sure the display resolution is set to 1547 × 1080
4. If not, change it & Click "Yes" to keep these display setting

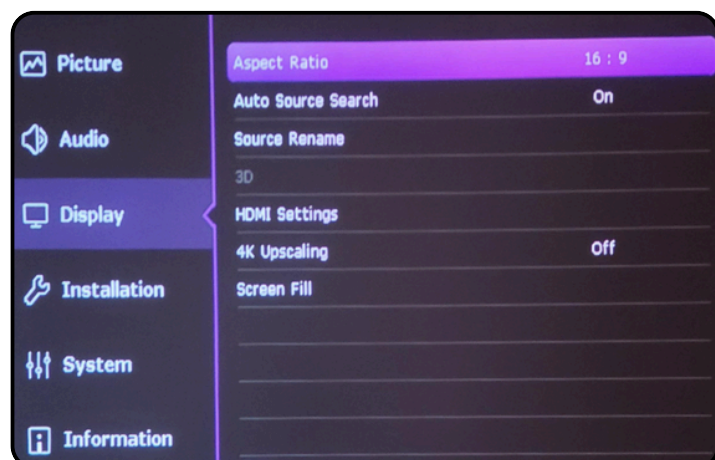


4. PROJECTOR SETTINGS

1. Turn on your Projector
2. Auto Screen Fit / Ok
3. Menu / Select Projector Position
4. Language: Select the desired language
5. Press Menu (On the remote) : Menu Type / Choose Advanced
6. Picture / Picture Mode: Select Golf



7. Display / Aspect Ratio / 16:9



5. PROJECTOR AJUSTEMENTS

Each environment is unique, so this section may require a bit more time and patience. Depending on your setup (screen size, projector distance, ceiling height, etc.), the adjustments needed can vary significantly from one user to another.

Take the time to explore and combine the different adjustments below to achieve an image perfectly suited to your installation. Don't hesitate to repeat the process multiple times to fine-tune the result to your preferences.

- Installation / Image Resize / Digital Shrink & Shift



- Installation / Geometry / Corner Fit :
Fine-tune the image size and position for precise alignment



5. PROJECTOR AJUSTEMENTS (CONTINUED)

- Installation / Focus / Focus / Ok

