



INSTALLATION GUIDE

SIMBOOTH 1

TABLE OF CONTENTS

| | |
|--------------------------------|-------|
| Parts list | 3-4 |
| Structure installation | 5-7 |
| Floor installation | 8 |
| Half walls installation | 8 |
| Electronics installation | 9 |
| Cable connections | 10 |
| Appendix A | 11 |
| Appendix B | 12-15 |



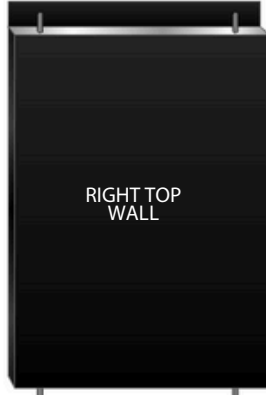
PARTS LIST

WALL PANELS

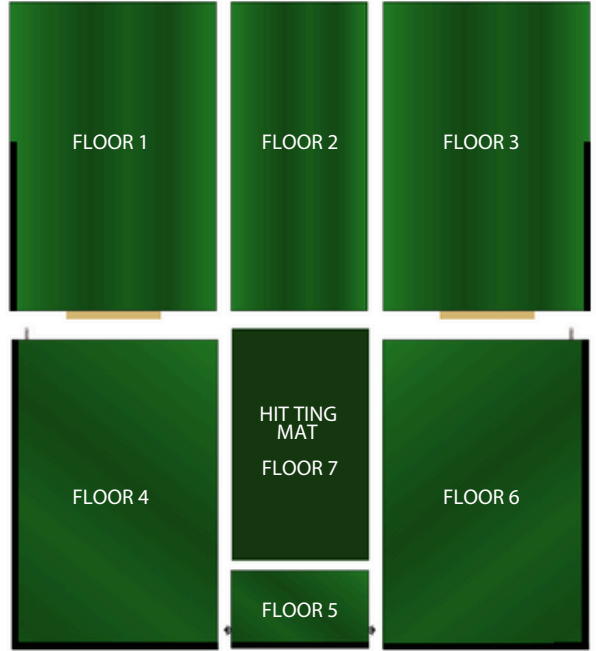
LEFT WALLS



RIGHT WALLS



FLOOR PANELS



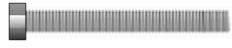
CEILING PANELS



PARTS LIST

ACCESSORIES

Bolts



3-1/2" (6x)

Washer (30x)



Nuts (24x)



Hitting mat



Black impact screen



Ceiling truss



Projector and remote



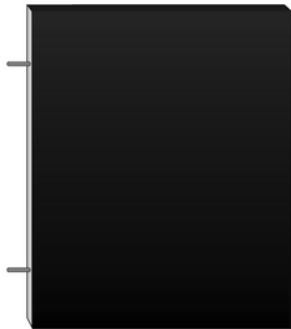
White screen



Tees (10x)



Half wall (2x)



Projector beam



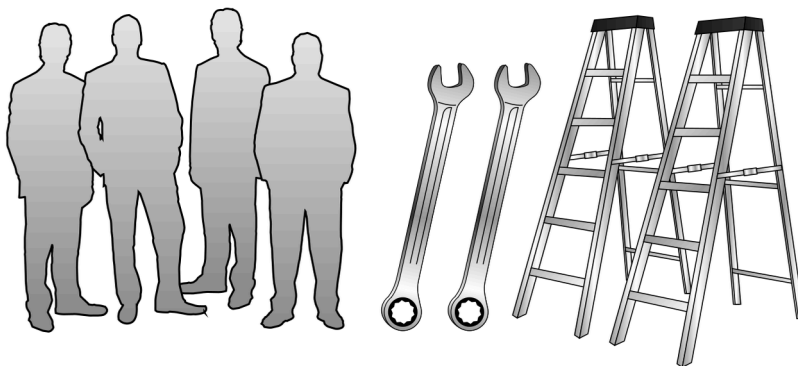
Wire Cover



END OF PARTS LIST

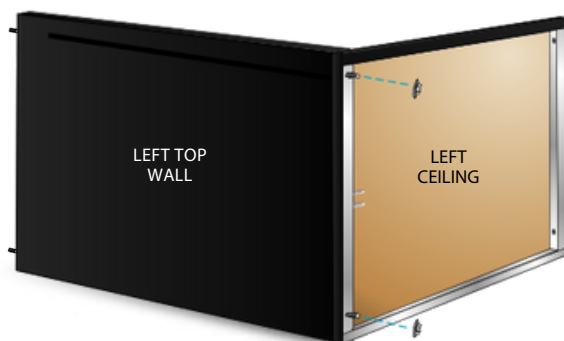
BEFORE STARTING

You will need 4 people, two ladders, and two 1/2" wrenches.



1

Fix the left top wall to the left ceiling with the nuts.

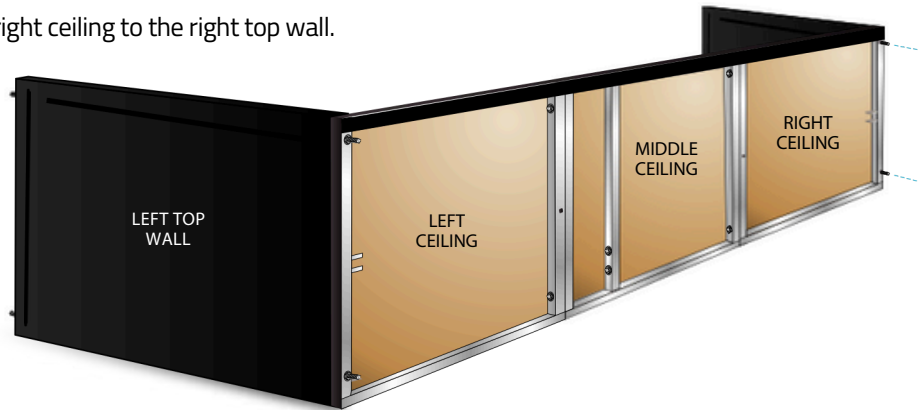


2

Using the nuts, fix the middle ceiling to the left ceiling, then fix the right ceiling to the middle ceiling.



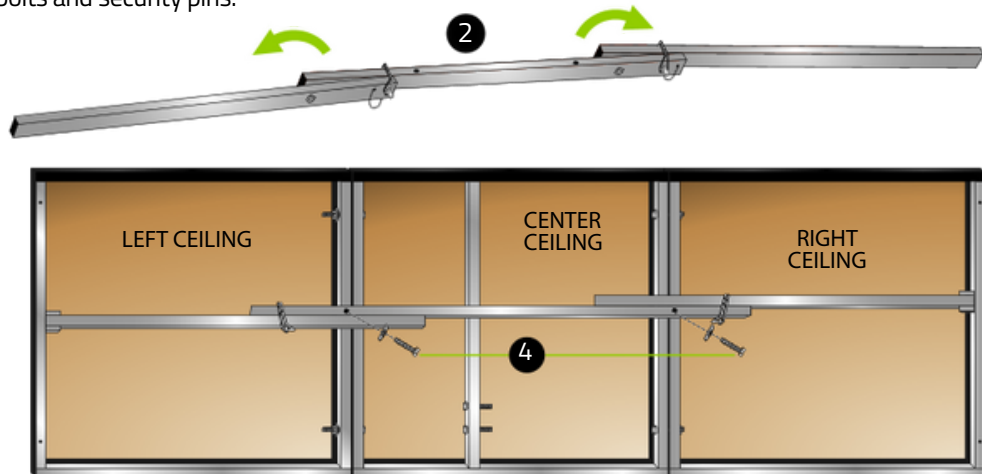
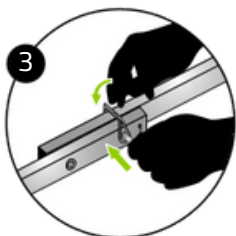
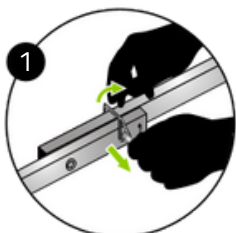
3 Using the nuts, fix the right ceiling to the right top wall.



4 Fix the bottom wall panels to the top wall panels with the nuts by removing the bottom wall covers (Velcro).



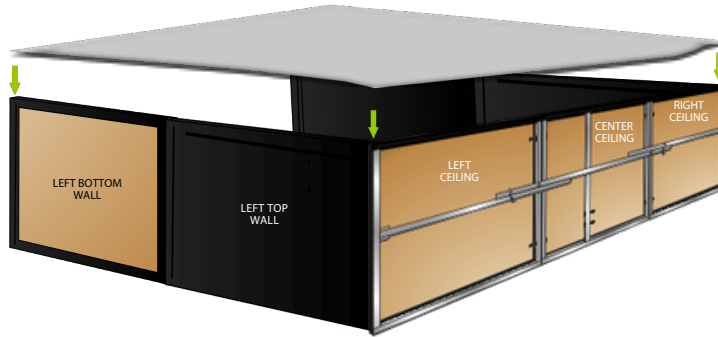
5 Assemble the ceiling truss with bolts and security pins.



IT IS IMPORTANT TO COMPLETE THIS STEP BEFORE LIFTING THE STRUCTURE.

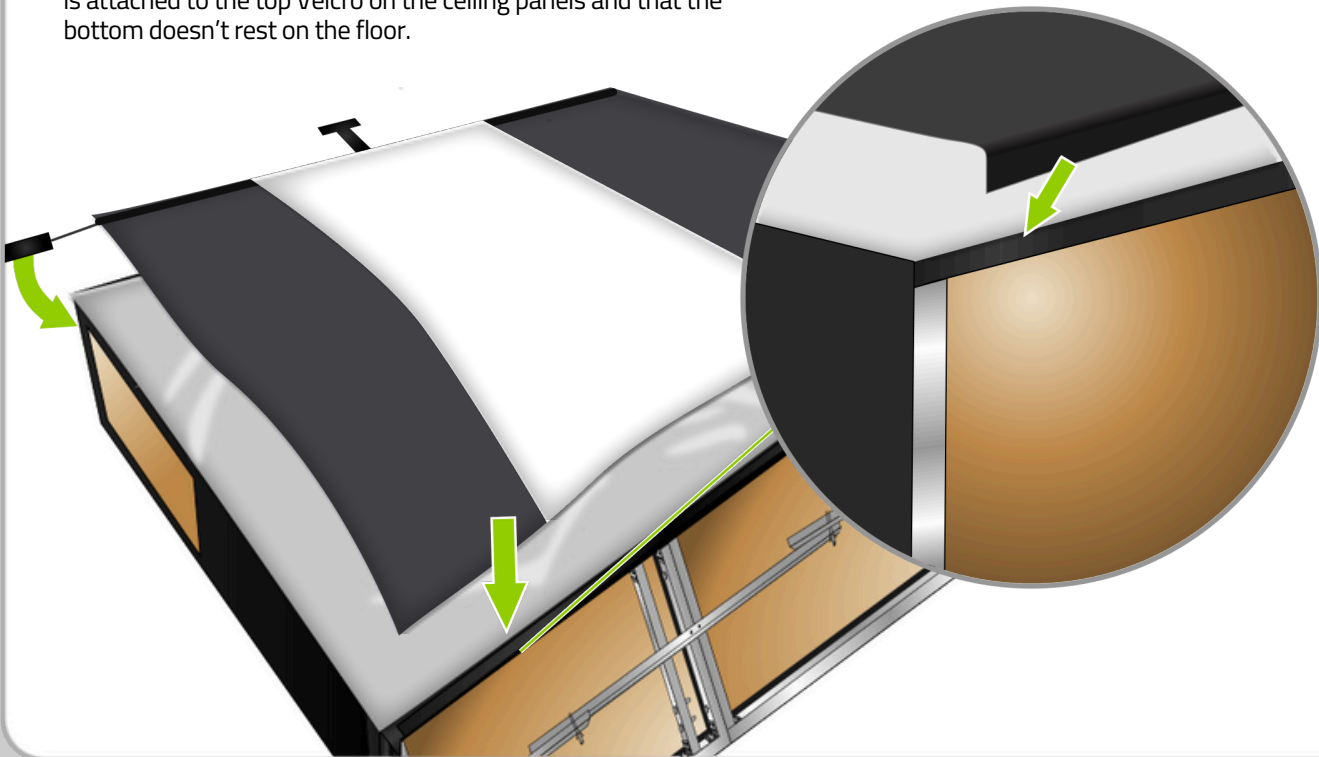
6

Attach the white screen to the structure.



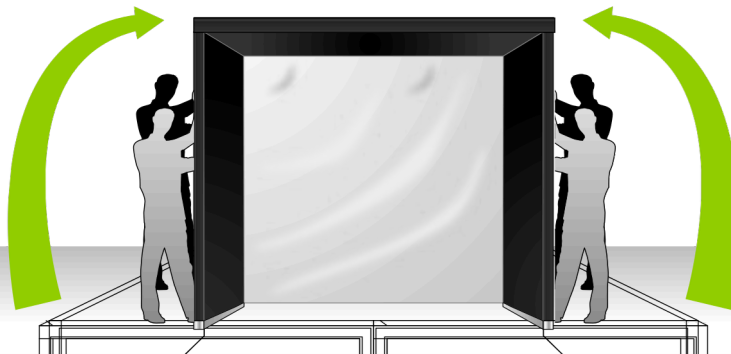
7

Attach the black impact netting over the white screen. Make sure it is attached to the top Velcro on the ceiling panels and that the bottom doesn't rest on the floor.



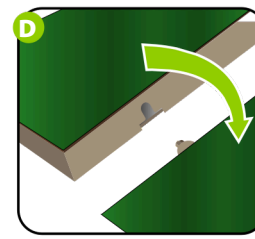
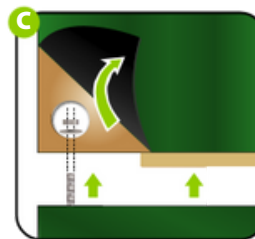
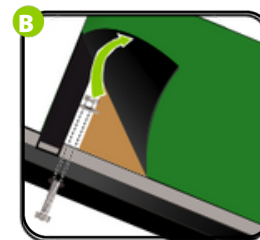
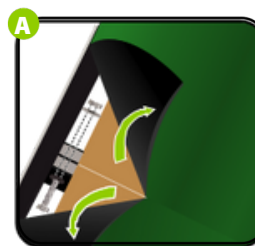
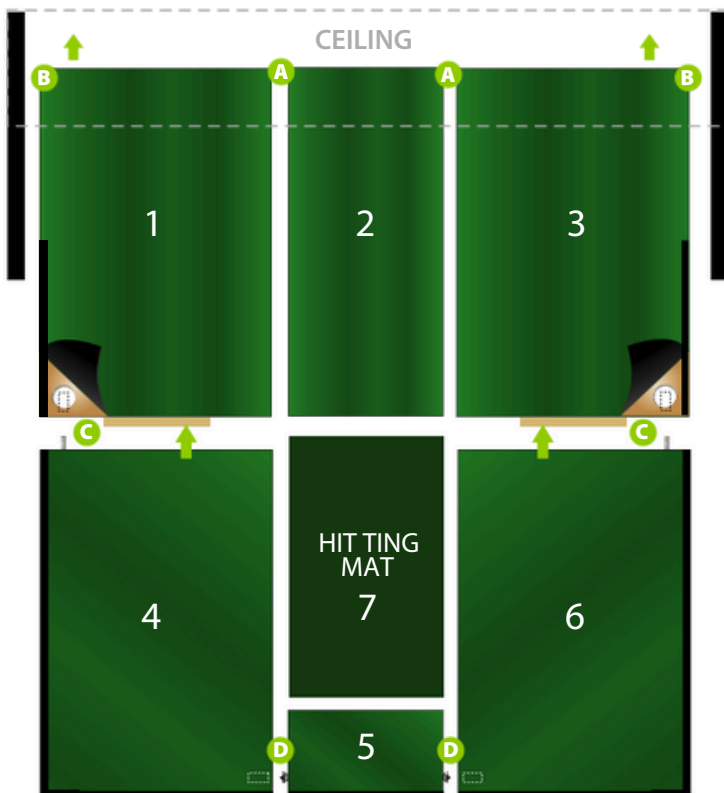
8

Lift the structure with 4 people.



1

Install the floor sections in order (1 to 7). A and B you will need bolts washers and nuts. C you will need washers and nuts.

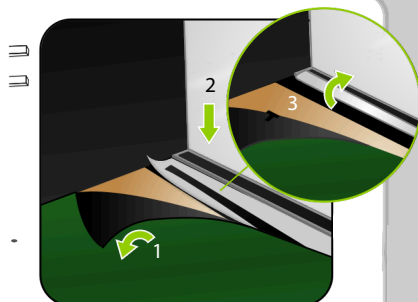


2

Step 1
Lift green carpet.

Step 2
Stretch the white screen behind and under the aluminum bar and reach for it through the space.

Step 3
Stick it on the aluminum bar velcro.



HALF-WALL INSTALLATION

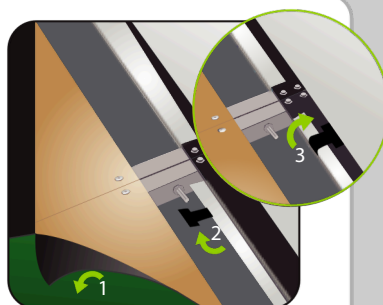
Attach the half-wall panels to the structure with washers and nuts.

3

Step 1
Lift green carpet.

Step 2
Stretch the black netting behind and under the aluminum bar and attach it on the remaining half of the aluminum bar using the T shaped Velcro.

Step 3
Stick it on the remaining half of the aluminum bar velcro.

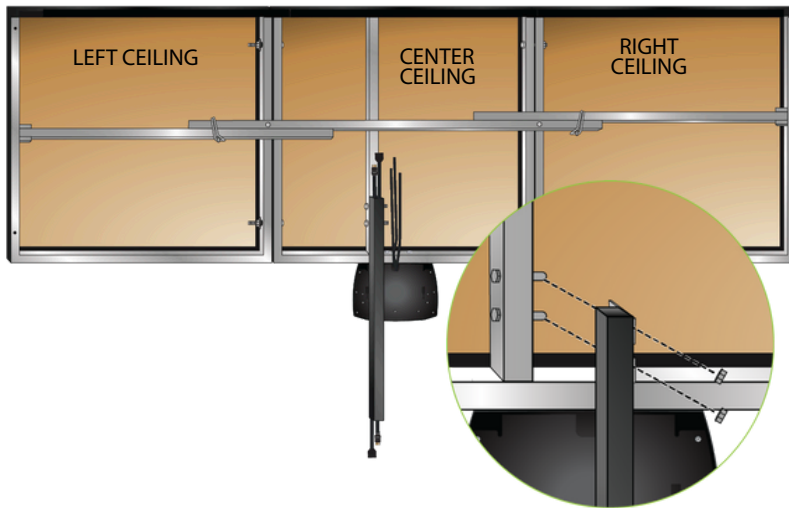


1

PROJECTOR BEAM INSTALLATION

Attach the projector beam to the ceiling structure with washers and nuts.

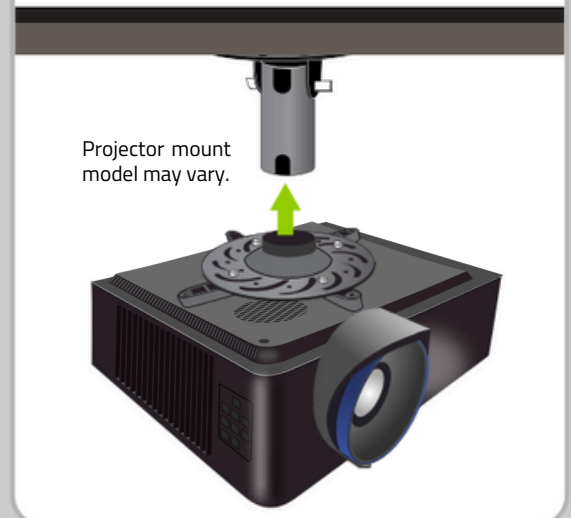
*If installed on the ceiling, refer to Appendix A for the right position.



2

PROJECTOR INSTALLATION

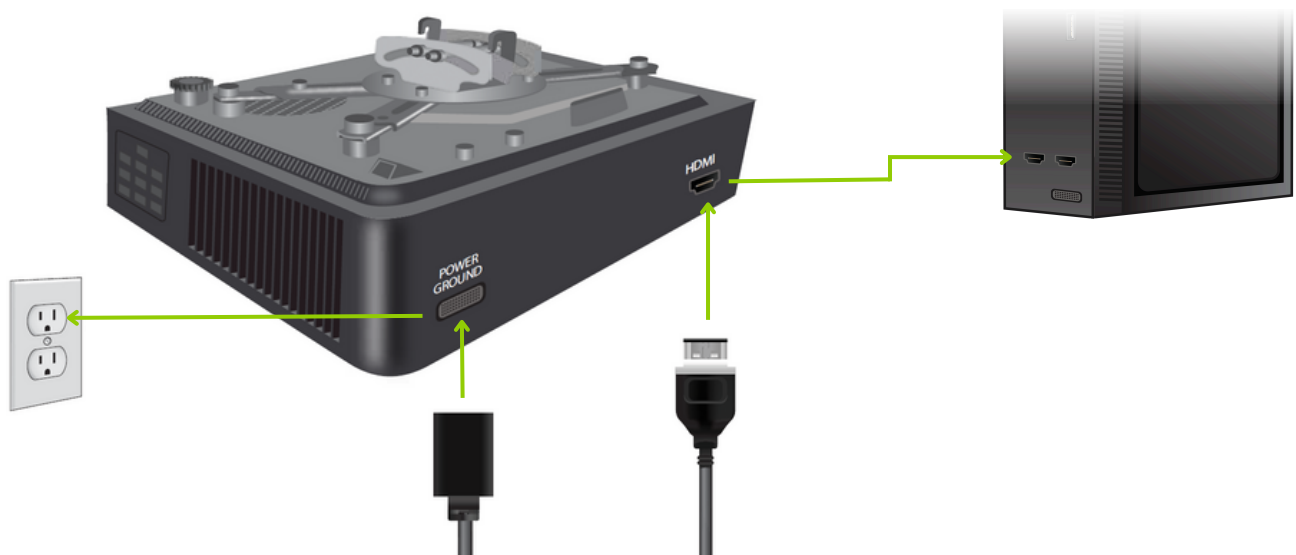
Attach the projector on the projector mount. Refer to the instruction sheet inside the projector box.



3

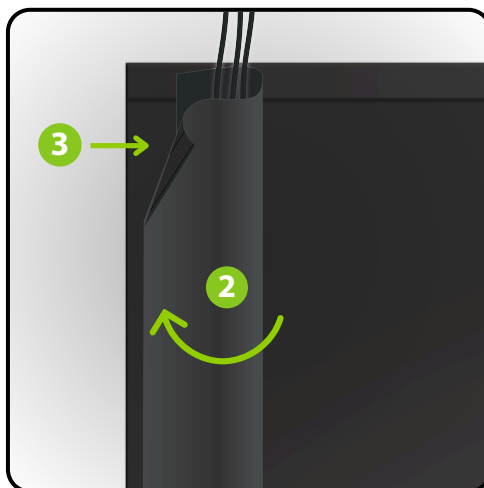
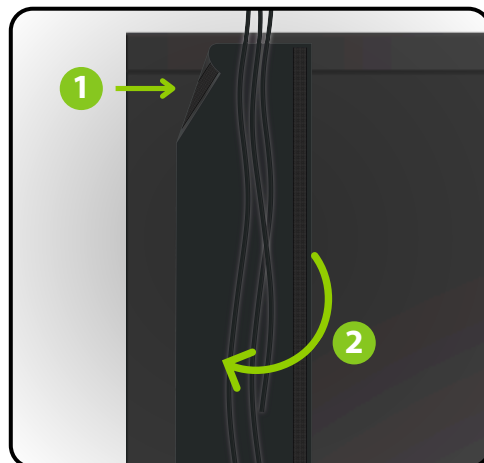
PROJECTOR CABLE CONNECTIONS

Plug the HDMI cable to the HDMI port on your projector and on your PC. Connect the power cable to the ground terminal and your electrical outlet. Refer to Appendix B for your projector adjustments.

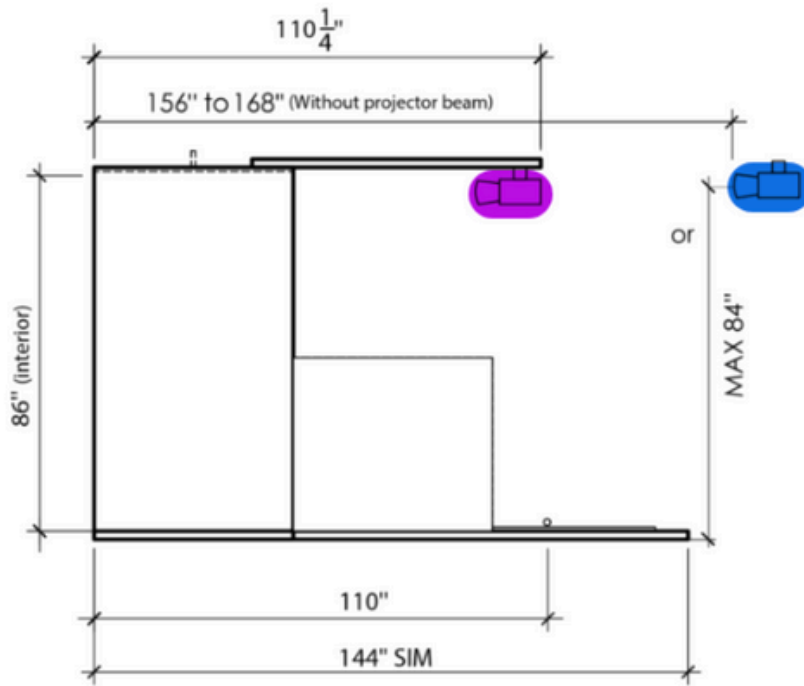


WIRE COVER

Stick one side of the wire cover to the structure using the Velcro. Gather your wires inside the wire cover and, forming a loop over the wires, stick the second side of the wire cover just in front of your first Velcro.



PROJECTOR POSITION WITHOUT PROJECTOR BEAM



BENQ LH600ST PROJECTOR AJUSTEMENTS

TABLE OF CONTENTS

- | | |
|--|--|
| 1. Select the correct HDMI Source | 5. Display / Aspect Ratio / 16:10 |
| 2. System / Language | 6. Display / Image Resize / Digital Shrink and Shift |
| 3. Settings / Projector Installation / Front Ceiling | 7. Display / Corner fit |
| 4. Picture / Golf | 8. Zoom and Focus |

1. SELECT THE CORRECT HDMI SOURCE

STEP 1

Turn on the projector and press the 'Source' button on the remote control.

STEP 2

Use the arrows to navigate to the appropriate HDMI input (HDMI 1 or HDMI 2) and press 'OK' to select.

2.SYSTEM / LANGUAGE

STEP 1

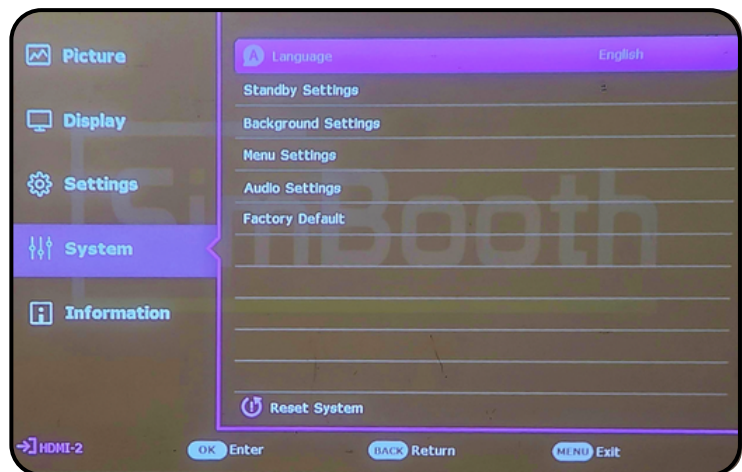
Press the 'Menu' button on the remote control.

STEP 2

Go to 'System' then 'Language'.

STEP 3

Select the desired language for the projector interface.



3. SETTINGS / PROJECTOR INSTALLATION / FRONT CEILING

STEP 1

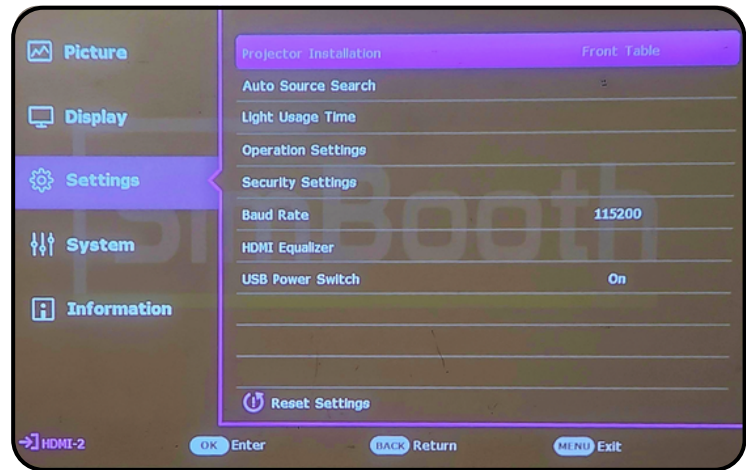
Press the 'Menu' button on the remote control.

STEP 2

Go to 'Settings'.

STEP 3

Select 'Projector Installation' and set it to 'Front Ceiling'.



4. PICTURE / GOLF

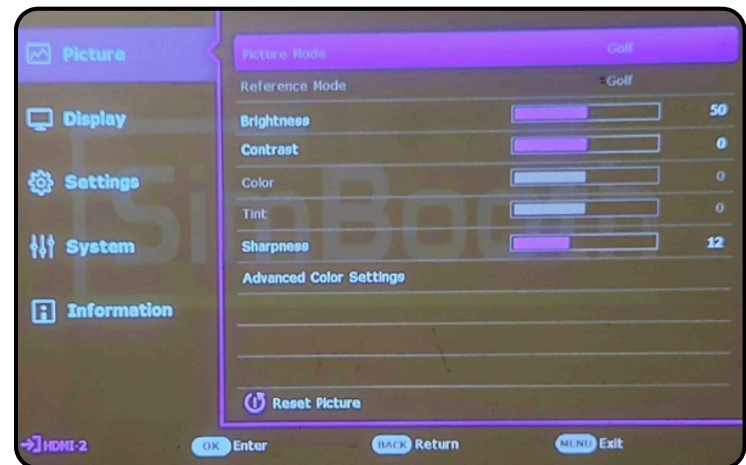
STEP 1

Press the 'Menu' button on the remote control.

STEP 2

Go to 'Picture' then select the 'Golf' mode in 'Picture mode'

This mode optimizes colors for golf simulators, making greens and blues more vivid.



5. DISPLAY / ASPECT RATIO / 16:10

STEP 1

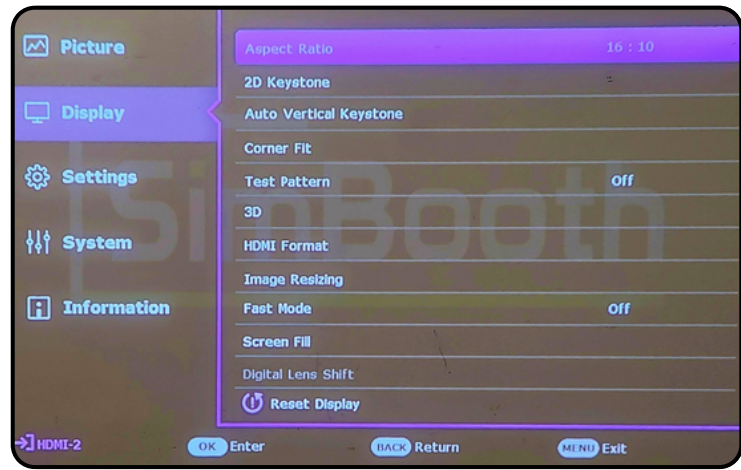
Press the 'Menu' button on the remote control.

STEP 2

Go to 'Display' then 'Aspect Ratio'.

STEP 3

Select the '16:10' format to adjust the image to this ratio.



6. DISPLAY / IMAGE RESIZE / DIGITAL SHRINK AND SHIFT

STEP 1

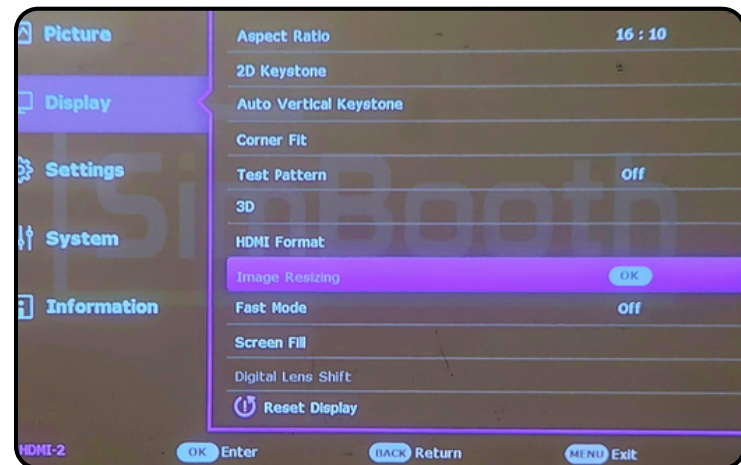
Press the 'Menu' button on the remote control.

STEP 2

Go to 'Display' then 'Image Resize'.

STEP 3

Select 'Digital Shrink and Shift' to adjust the size and position of the projected image.



7. DISPLAY / CORNER FIT

STEP 1

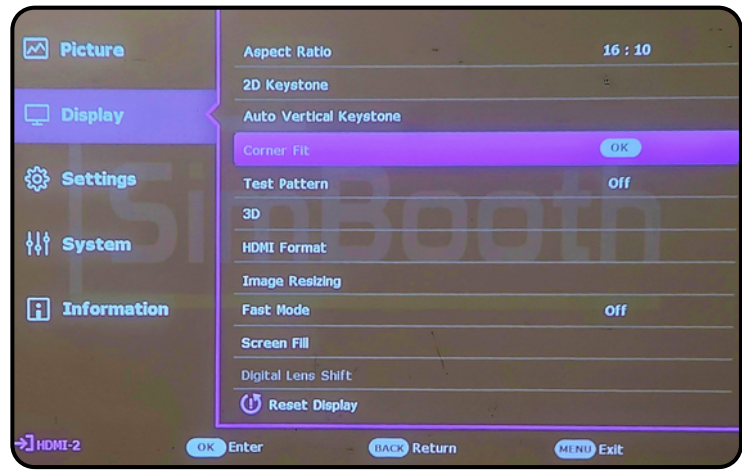
Press the 'Menu' button on the remote control.

STEP 2

Go to 'Display' then 'Corner Fit'.

STEP 3

Use the arrows to adjust each corner of the image to correct any distortion and achieve a perfectly aligned image.



8. ZOOM AND FOCUS

ZOOM

Turn the zoom ring on top of the lens to adjust the size of the projected image.



FOCUS

Use the focus ring, also located on top of the lens, to adjust the sharpness of the image. Turn the ring until the image is clear and sharp.

