



INSTALLATION GUIDE

SIMBOOTH KIT 1

TABLE OF CONTENTS

Important information	1
PC specifications	2
Parts list	3-4
Structure installation	5-7
Floor installation	8
Half walls installation	8
Electronics installation	8
Cable connections	10
IDRA II calibration and software installation	11
Appendix A	12
Appendix B	13-16



**WARNING**

PLEASE READ THE FOLLOWING BEFORE USE.

FAILURE TO FOLLOW THE INSTRUCTIONS COULD RESULT IN SERIOUS INJURY, PROPERTY DAMAGE, AND/OR VOID THE DEVICE WARRANTY.

- 1.** Do NOT install IDRA II in a location where its operating temperature may be exceeded. Excessive temperatures may damage the launch monitor. Recommended operating temperature range is 0°C – 50°C (32°F – 122°F).
- 2.** Install IDRA II in a room free of excessive dust and humidity to prevent the lens or optical components of IDRA II from becoming clouded or dirty.
- 3.** Do NOT attempt to disassemble, repair, or modify IDRA II. Doing so may result in fire, electrical shock, or injury. Contact our support team if any problems occur with the launch monitor.
- 4.** Make sure the hitting zone is not located in direct sun exposure.
- 5.** Be aware of your surroundings and use cautiously with children around.
- 6.** Do NOT install IDRA II outside. This device is only designed for indoor use.
- 7.** Do NOT touch the LED light as it may cause burns, and avoid looking directly at the light to prevent potential eye damage.

PC SPECIFICATIONS WITH GSPRO

Requirement	Minimum	Recommended
Processor	Intel i7 10th Gen + 16 logical processors	Intel i7 10th Gen + 24 logical processors
Storage	512 GB	1 TB
GPU	Nvidia GeForce RTX 20 series	Nvidia GeForce RTX 40 series
RAM memory	16 GB	32 GB
USB Ports	2 USB 3.0 ports are required	
Internet	High-speed Internet is required	

PC SPECIFICATIONS WITH E6 CONNECT

Requirement	Minimum	Recommended
Processor	Intel i7 10th Gen + 16 logical processors	
Storage	512 GB	
GPU	Nvidia GeForce RTX 20 series	Nvidia GeForce RTX 30 series
RAM memory	16 GB	
USB Ports	2 USB 3.0 ports are required	
Internet	High-speed Internet is required	



AMD PROCESSORS ARE NOT SUPPORTED.

DO NOT USE USB CABLE EXTENSION BETWEEN YOUR PC AND YOUR IDRA II.

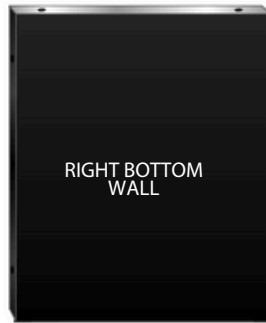
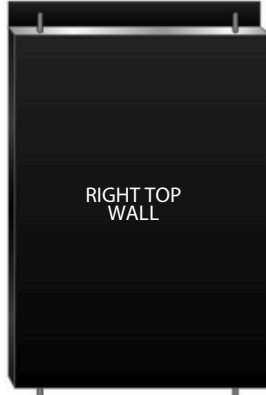
PARTS LIST

WALL PANELS

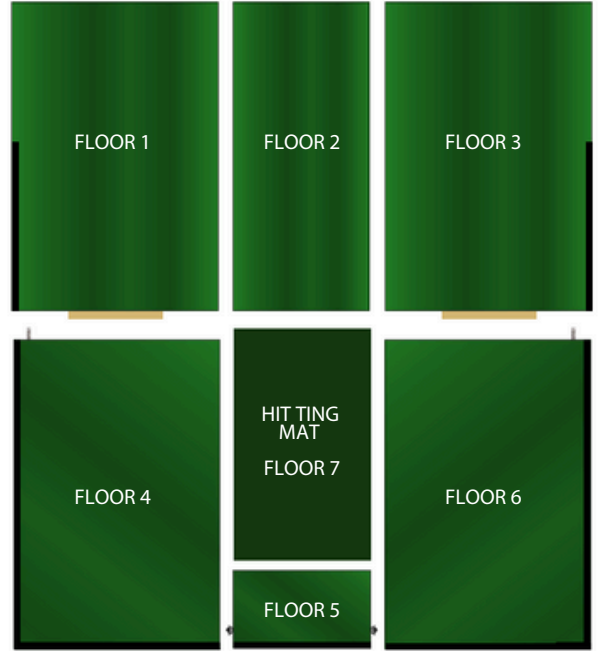
LEFT WALLS



RIGHT WALLS



FLOOR PANELS



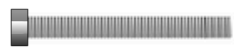
CEILING PANELS



PARTS LIST

ACCESSORIES

Bolts



3-1/2" (6x)

Washer (44x)



Nuts (28x)



Hitting mat



Black impact screen



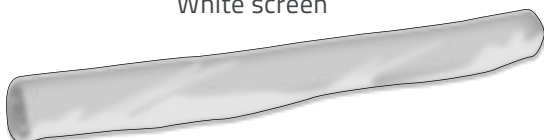
Ceiling truss



Projector and remote



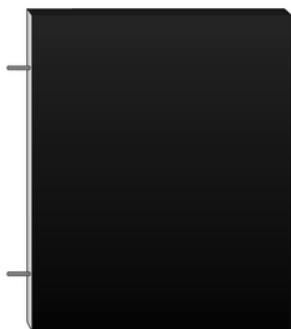
White screen



Tees (10x)



Half wall (2x)



Projector beam



LAUNCH MONITOR

IDRA II AI launch monitor



With power cable and two USB camera cables (1x)

Calibration board (1x)



Wireless remotely operated switch (1x)
(Only included in North America)



For illustration purposes only. Model may vary.

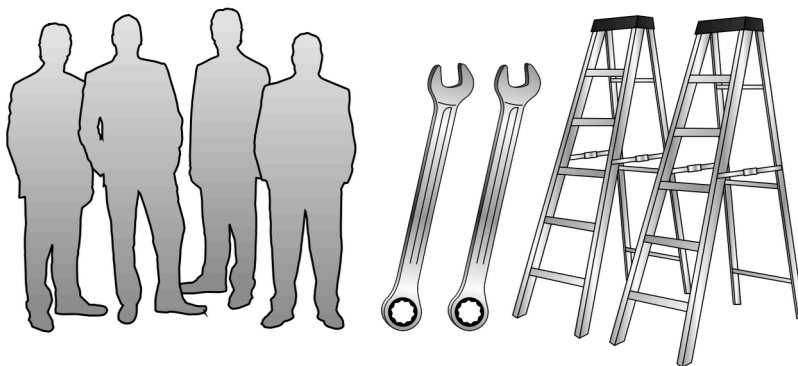
Nuts (2x)



END OF PARTS LIST

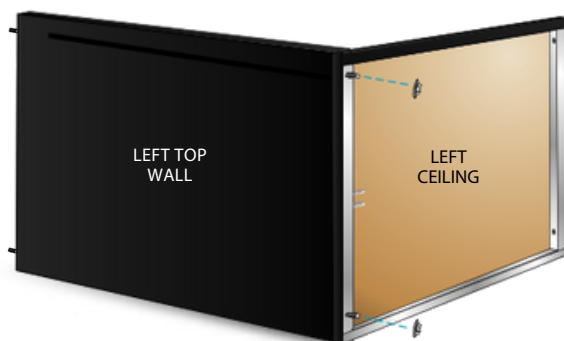
BEFORE STARTING

You will need 4 people, two ladders, and two 1/2" wrenches.



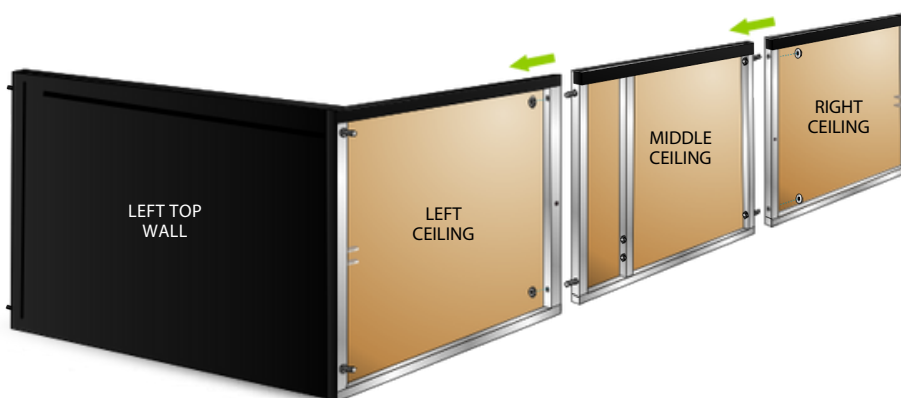
1

Fix the left top wall to the left ceiling with the nuts.



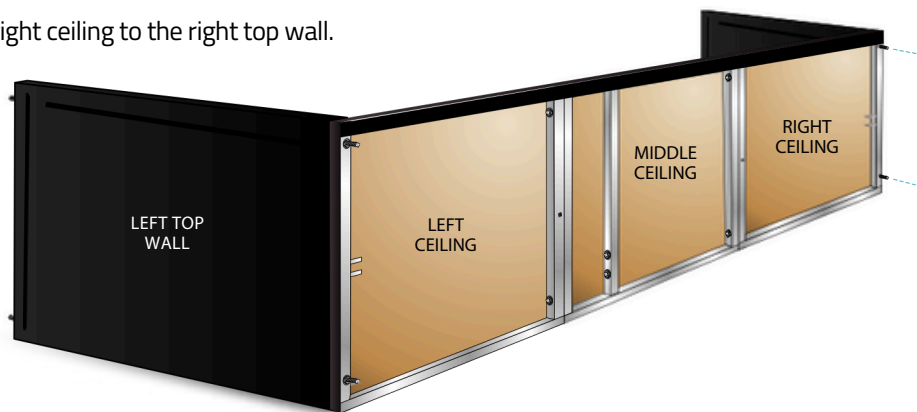
2

Using the nuts, fix the middle ceiling to the left ceiling, then fix the right ceiling to the middle ceiling.



3

Using the nuts, fix the right ceiling to the right top wall.



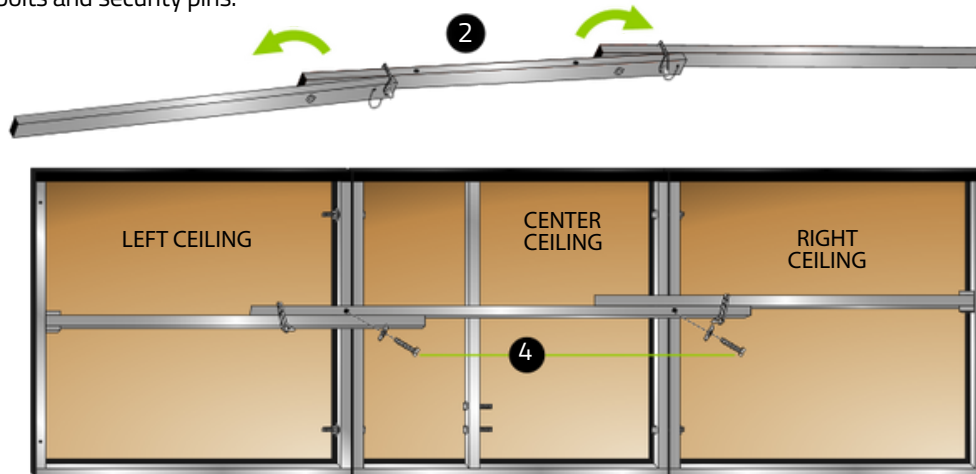
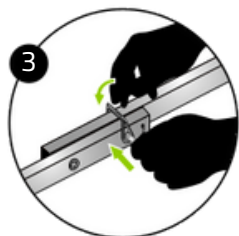
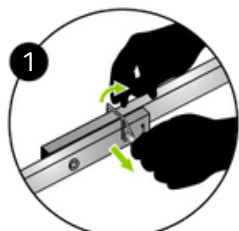
4

Fix the bottom wall panels to the top wall panels with the nuts by removing the bottom wall covers (Velcro).



5

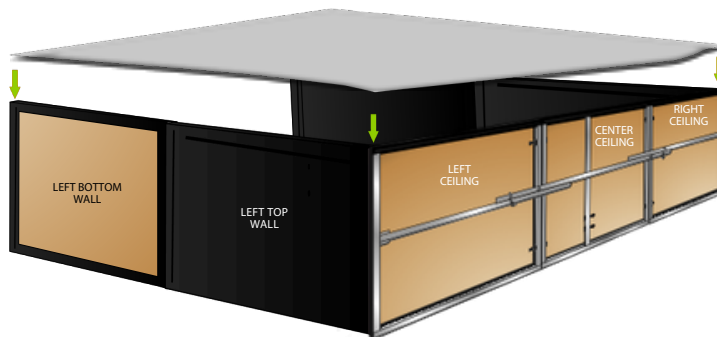
Assemble the ceiling truss with bolts and security pins.



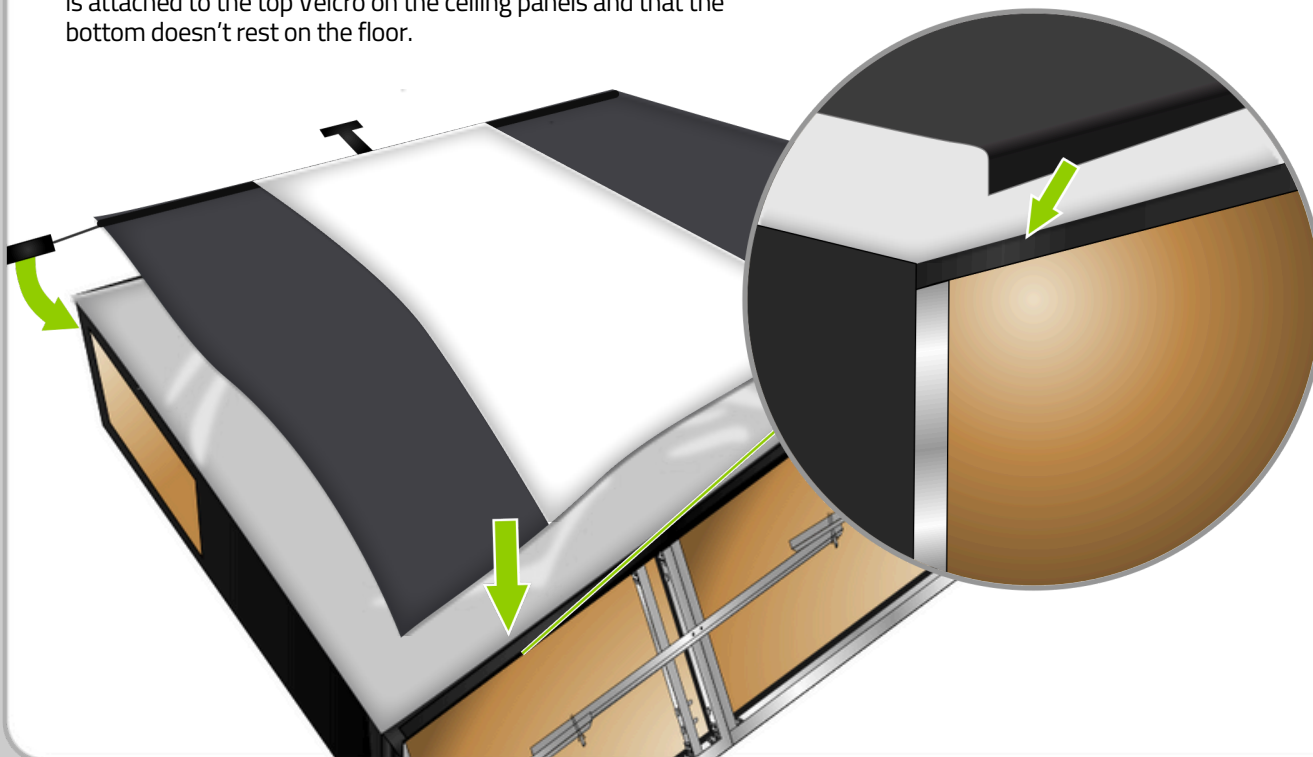
IT IS IMPORTANT TO COMPLETE THIS STEP BEFORE LIFTING THE STRUCTURE.

6

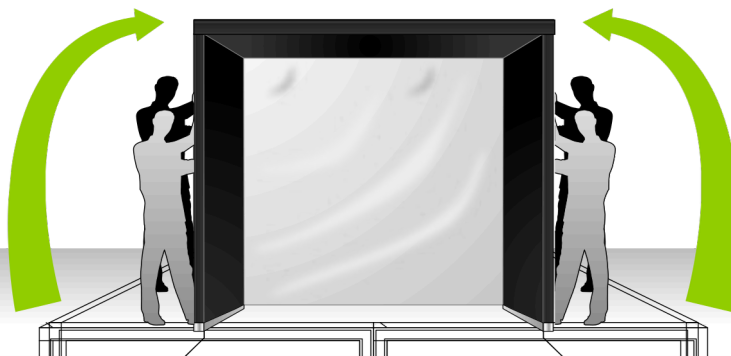
Attach the white screen to the structure.

**7**

Attach the black impact netting over the white screen. Make sure it is attached to the top Velcro on the ceiling panels and that the bottom doesn't rest on the floor.

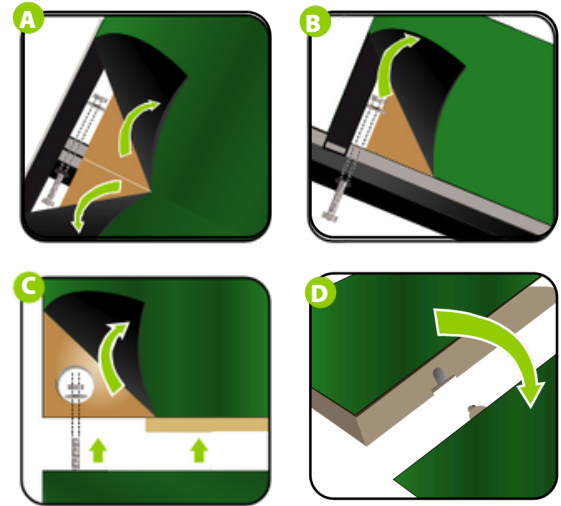
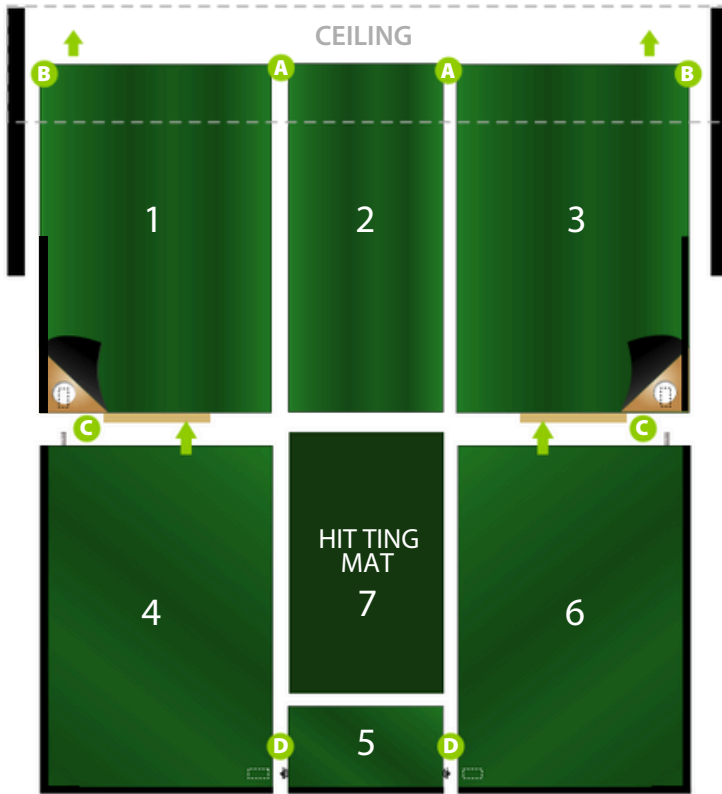
**8**

Lift the structure with 4 people.



1

Install the floor sections in order (1 to 7). A and B you will need bolts washers and nuts. C you will need washers and nuts.

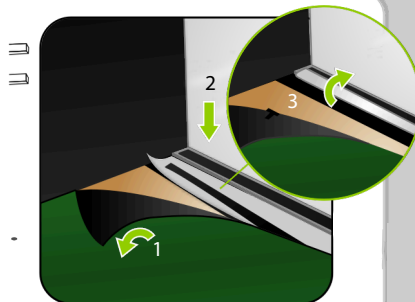


2

Step 1
Lift green carpet.

Step 2
Stretch the white screen behind and under the aluminum bar and reach for it through the space.

Step 3
Stick it on the aluminum bar velcro.



HALF-WALL INSTALLATION

Attach the half-wall panels to the structure with washers and nuts.

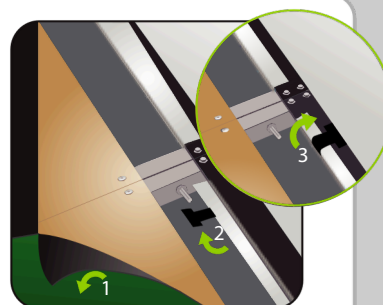


3

Step 1
Lift green carpet.

Step 2
Stretch the black netting behind and under the aluminum bar and attach it on the remaining half of the aluminum bar using the T shaped Velcro.

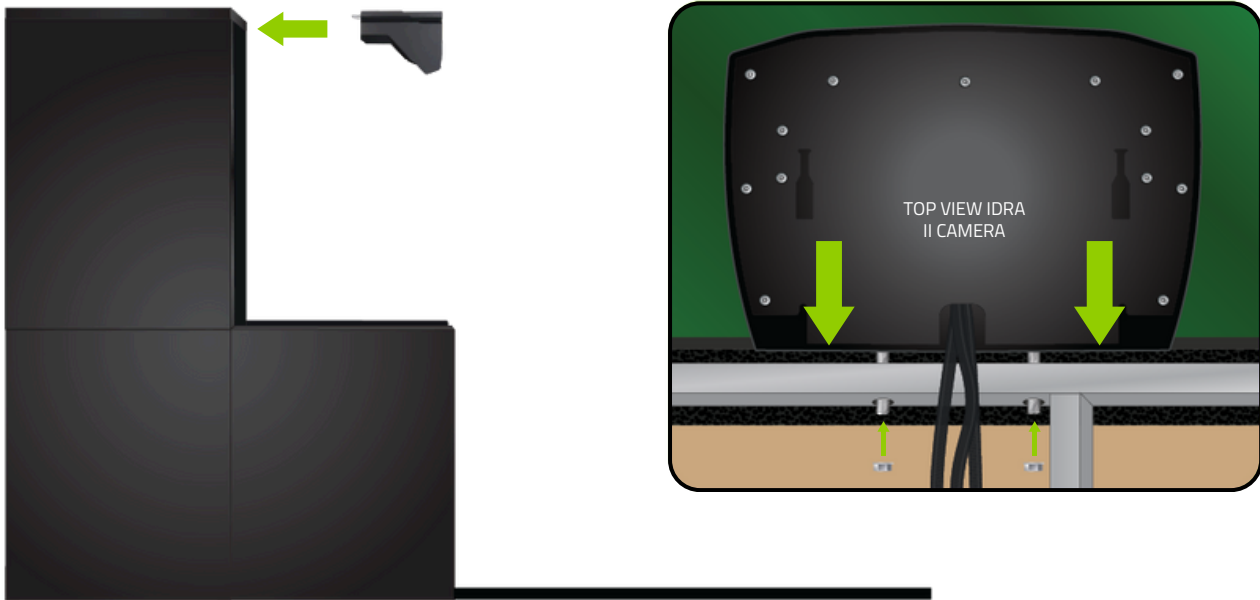
Step 3
Stick it on the remaining half of the aluminum bar velcro.



1

IDRA II INSTALLATION

Climb on a ladder and fix the IDRA II camera through the holes that are located at the center the structure. Then, secure it tightly with two nuts on the other side.

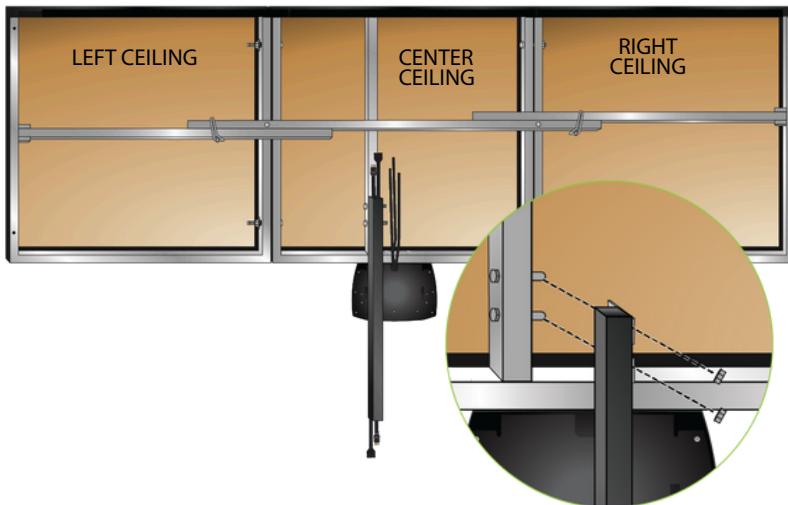


2

PROJECTOR BEAM INSTALLATION

Attach the projector beam to the ceiling structure with washers and nuts.

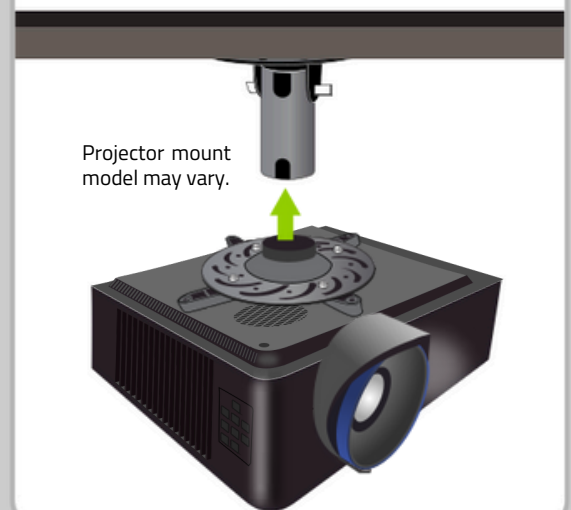
*If installed on the ceiling, refer to Appendix A for the right position.



3

PROJECTOR INSTALLATION

Attach the projector on the projector mount. Refer to the instruction sheet inside the projector box.



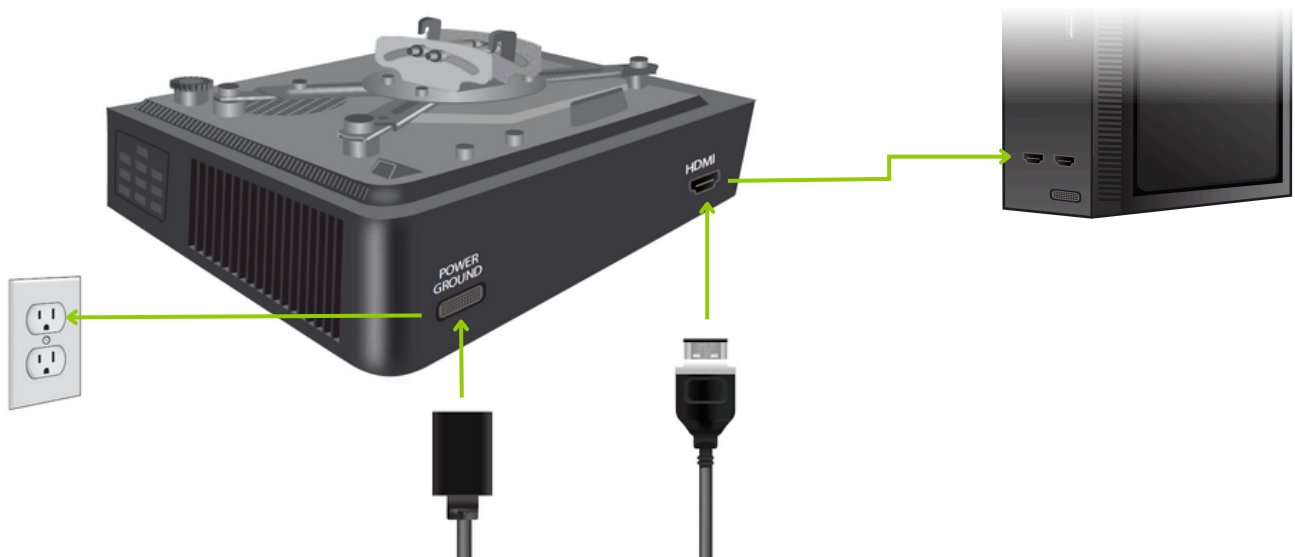
IDRA CABLE CONNECTIONS

Connect the power cable (country-specific) to the wireless remotely operated switch. Connect your wireless remotely operated switch to your electrical outlet. Plug the two USB camera cables to your 3.0 USB SS port on your PC. Ensure that there is no tension on the USB cables.



PROJECTOR CABLE CONNECTIONS

Plug the HDMI cable to the HDMI port on your projector and on your PC. Connect the power cable to the ground terminal and your electrical outlet. Refer to Appendix B for your projector adjustments.



GOLFIN LAUNCHER INSTALLATION AND IDRA II CALIBRATION

Follow these steps to complete your installation:

STEP 1

Ensure your computer is connected to the Internet.

STEP 2

Confirm that you have purchased the necessary software. IDRA II is compatible with GSPro and E6 Connect.

STEP 3

Visit www.teamviewer.com, download, and install the latest version of TeamViewer Host.

STEP 4

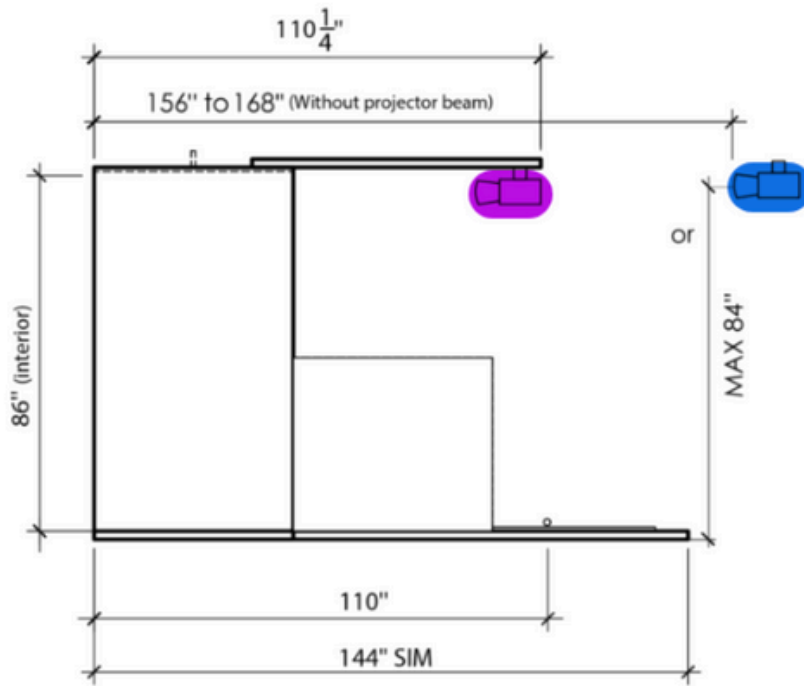
Schedule an appointment with our support team on the day of installation to finalize the setup and configuration of your IDRA II camera.

**CLICK HERE TO
BOOK AN
APPOINTMENT**



<https://outlook.office365.com/owa/calendar/RSPTechnicalAssistance@golfinsim.com/bookings/>

PROJECTOR POSITION WITHOUT PROJECTOR BEAM



BENQ LH600ST PROJECTOR AJUSTEMENTS

TABLE OF CONTENTS

- | | |
|--|--|
| 1. Select the correct HDMI Source | 5. Display / Aspect Ratio / 16:10 |
| 2. System / Language | 6. Display / Image Resize / Digital Shrink and Shift |
| 3. Settings / Projector Installation / Front Ceiling | 7. Display / Corner fit |
| 4. Picture / Golf | 8. Zoom and Focus |

1. SELECT THE CORRECT HDMI SOURCE

STEP 1

Turn on the projector and press the 'Source' button on the remote control.

STEP 2

Use the arrows to navigate to the appropriate HDMI input (HDMI 1 or HDMI 2) and press 'OK' to select.

2.SYSTEM / LANGUAGE

STEP 1

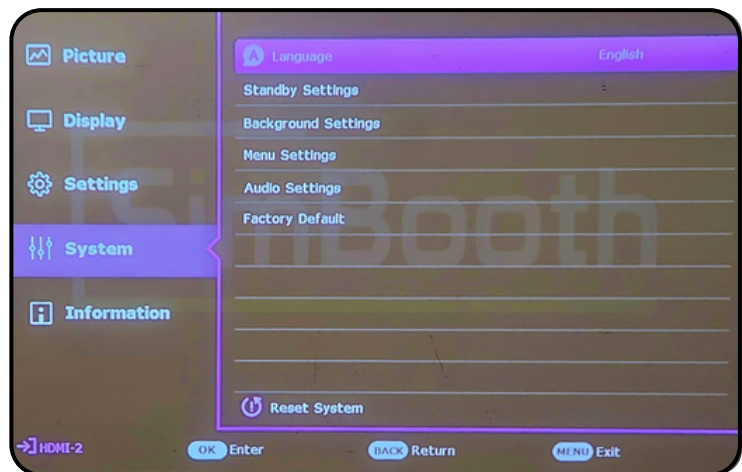
Press the 'Menu' button on the remote control.

STEP 2

Go to 'System' then 'Language'.

STEP 3

Select the desired language for the projector interface.



3. SETTINGS / PROJECTOR INSTALLATION / FRONT CEILING

STEP 1

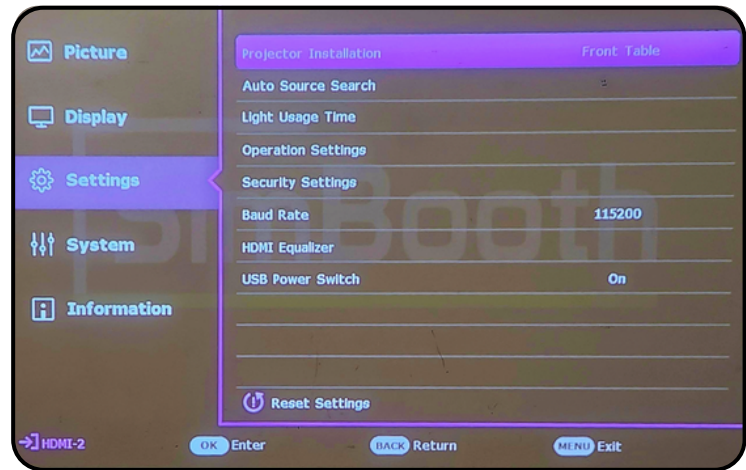
Press the 'Menu' button on the remote control.

STEP 2

Go to 'Settings'.

STEP 3

Select 'Projector Installation' and set it to 'Front Ceiling'.



4. PICTURE / GOLF

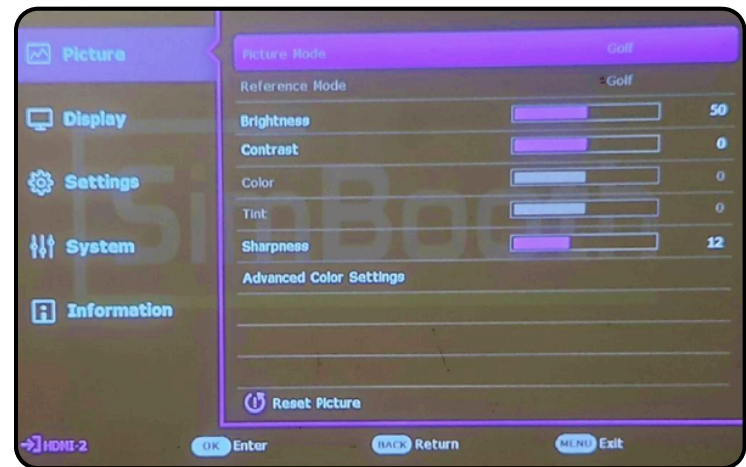
STEP 1

Press the 'Menu' button on the remote control.

STEP 2

Go to 'Picture' then select the 'Golf' mode in 'Picture mode'

This mode optimizes colors for golf simulators, making greens and blues more vivid.



5. DISPLAY / ASPECT RATIO / 16:10

STEP 1

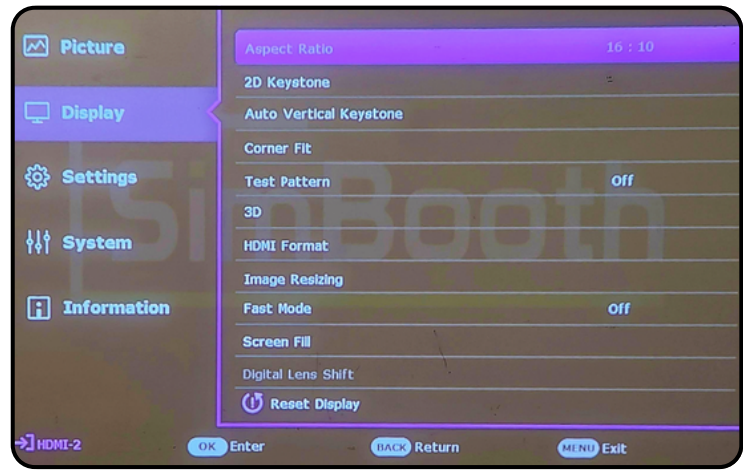
Press the 'Menu' button on the remote control.

STEP 2

Go to 'Display' then 'Aspect Ratio'.

STEP 3

Select the '16:10' format to adjust the image to this ratio.



6. DISPLAY / IMAGE RESIZE / DIGITAL SHRINK AND SHIFT

STEP 1

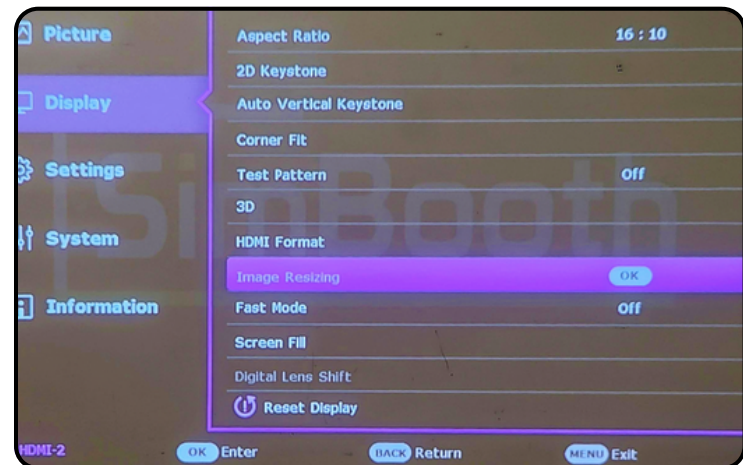
Press the 'Menu' button on the remote control.

STEP 2

Go to 'Display' then 'Image Resize'.

STEP 3

Select 'Digital Shrink and Shift' to adjust the size and position of the projected image.



7. DISPLAY / CORNER FIT

STEP 1

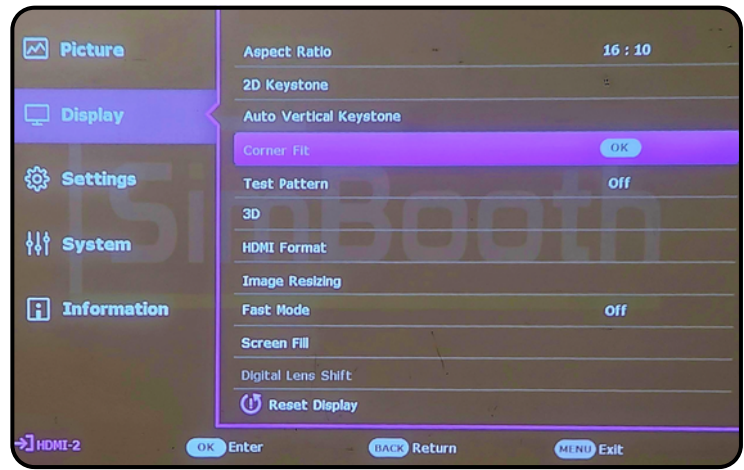
Press the 'Menu' button on the remote control.

STEP 2

Go to 'Display' then 'Corner Fit'.

STEP 3

Use the arrows to adjust each corner of the image to correct any distortion and achieve a perfectly aligned image.



8. ZOOM AND FOCUS

ZOOM

Turn the zoom ring on top of the lens to adjust the size of the projected image.



FOCUS

Use the focus ring, also located on top of the lens, to adjust the sharpness of the image. Turn the ring until the image is clear and sharp.

