



INSTALLATION GUIDE
SIMBOOTH 1.0

TABLE OF CONTENTS

INSTALLATION

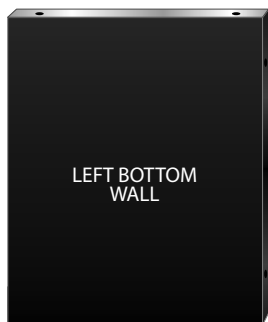
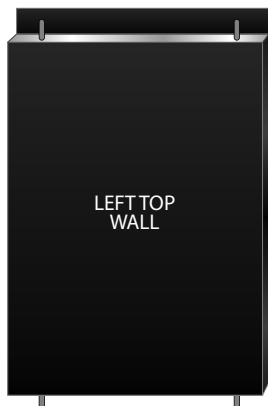
Parts list	3-4
Structure assembly	5-7
Floor installation	8
Optional (Half-wall, rafter and projector)	9



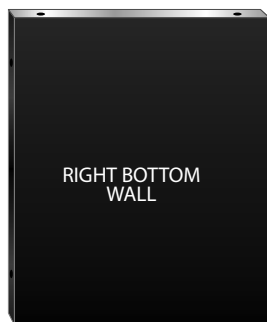
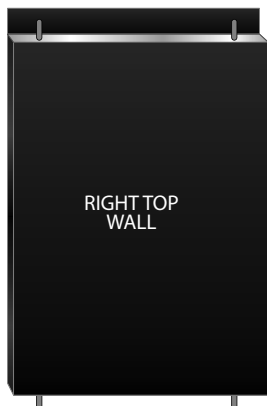
PARTS LIST

WALL PANELS

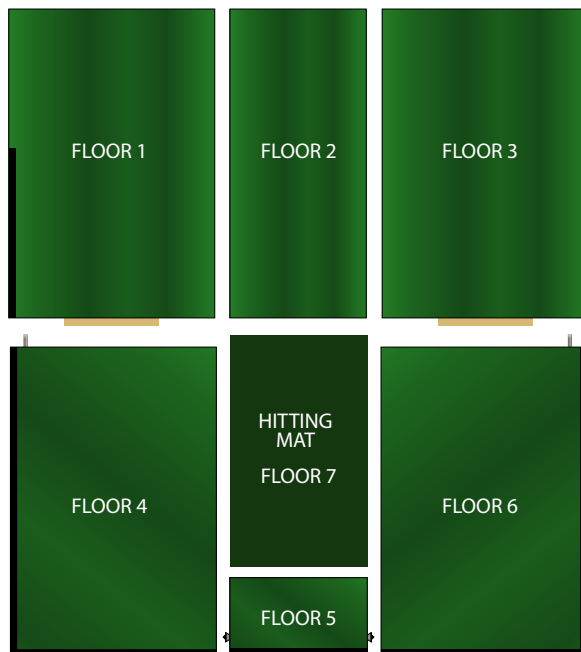
Left wall



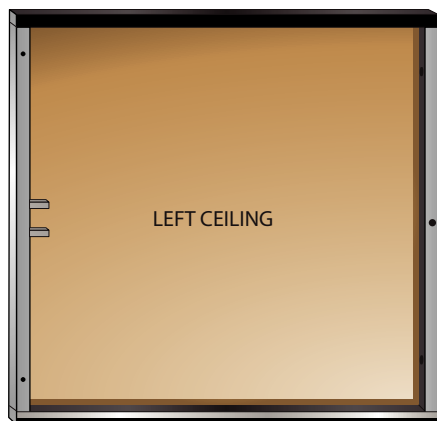
Right wall



FLOOR PANELS



CEILING PANELS



PARTS LIST

ACCESSORIES

Bolts



3-1/2" (6x)

Washer (44x)



Nuts (28x)



Hitting mat



Black impact screen



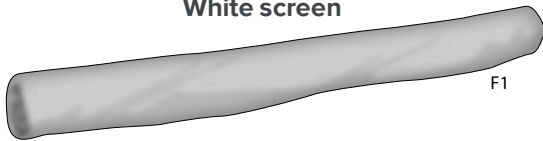
Ceiling truss



Shime
(Under the hitting mat)



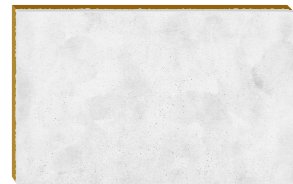
White screen



Tees (10x)

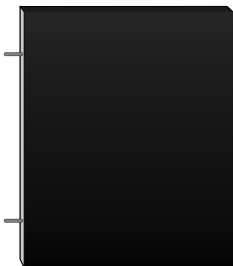


Shime
(Under the hitting mat)



OPTIONAL

Half wall (2x)



Projector and remote

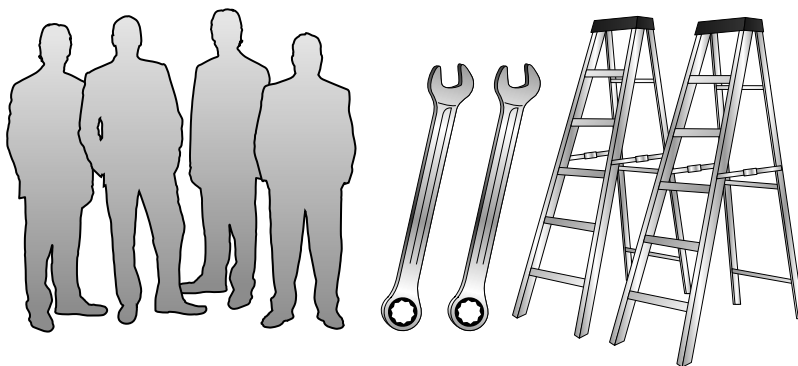


Rafter

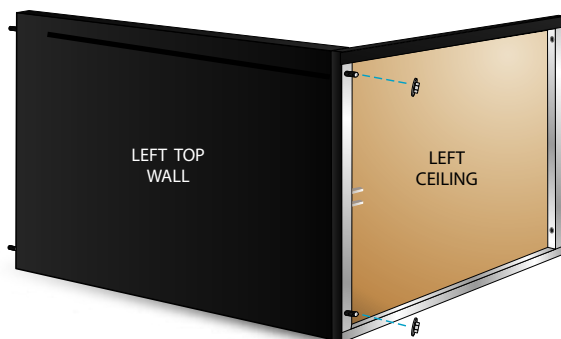


BEFORE STARTING

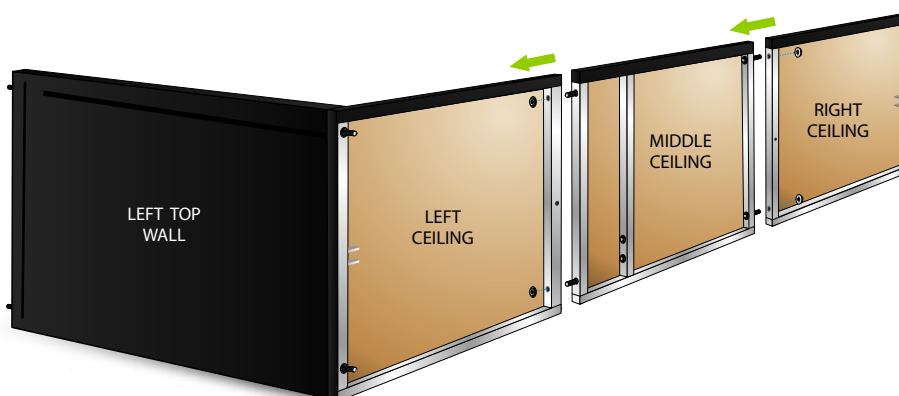
You will need four people, two ladders, and two 1/2" wrenches.

**1**

Fix the left top wall to the left ceiling with the nuts.

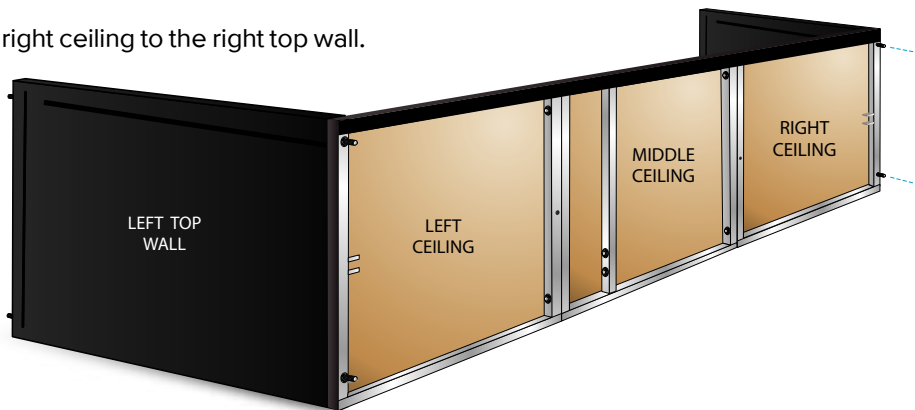
**2**

Using the nuts, fix the middle ceiling to the left ceiling, then fix the right ceiling to the middle ceiling.



3

Using the nuts, fix the right ceiling to the right top wall.



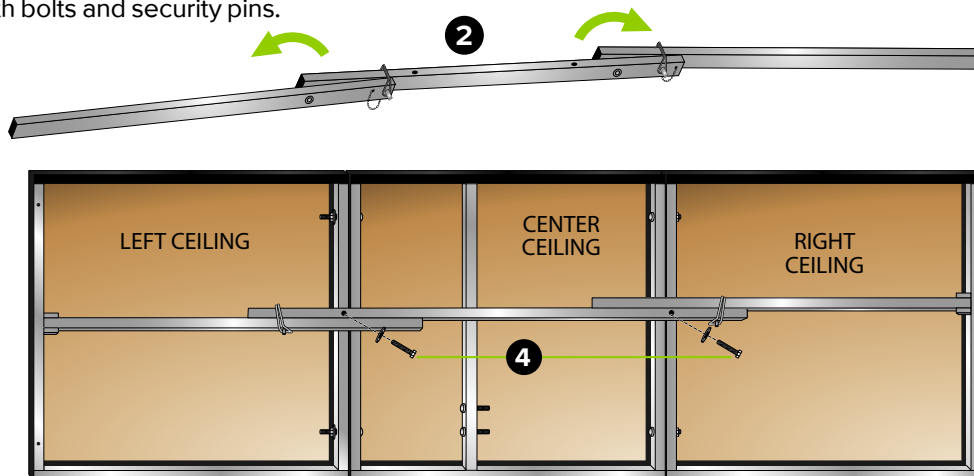
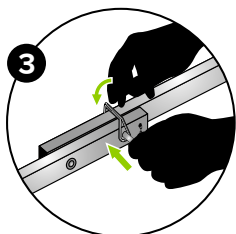
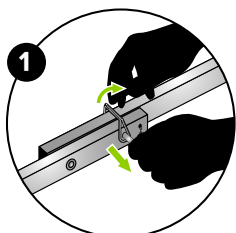
4

Fix the bottom wall panels to the top wall panels with the nuts by removing the bottom wall covers (Velcro).



5

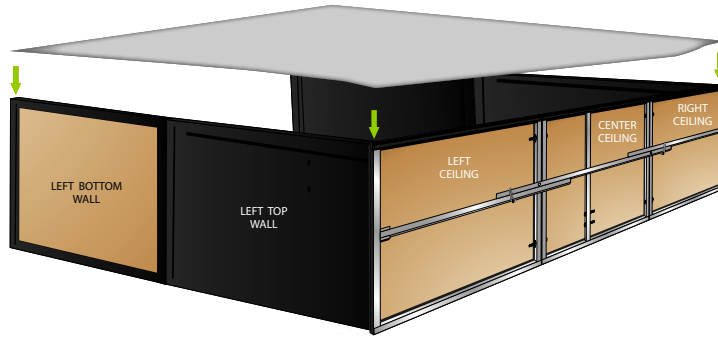
Assemble the ceiling truss with bolts and security pins.



IT IS IMPORTANT TO COMPLETE THIS STEP BEFORE LIFTING THE STRUCTURE.

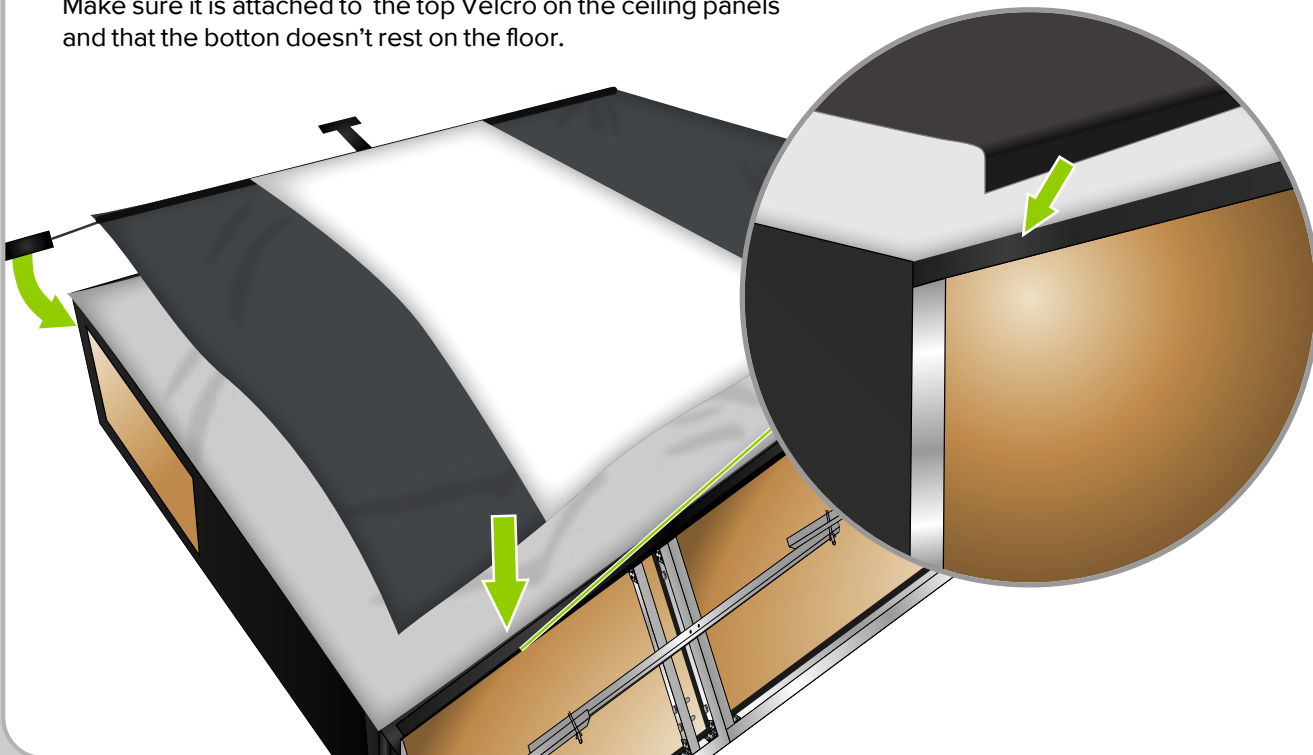
6

Attach the white screen to the structure.



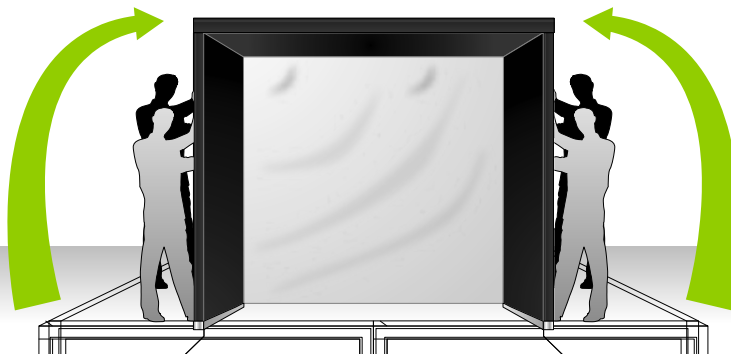
7

Attach the black impact netting over the white screen. Make sure it is attached to the top Velcro on the ceiling panels and that the bottom doesn't rest on the floor.



8

Lift the structure with four people.

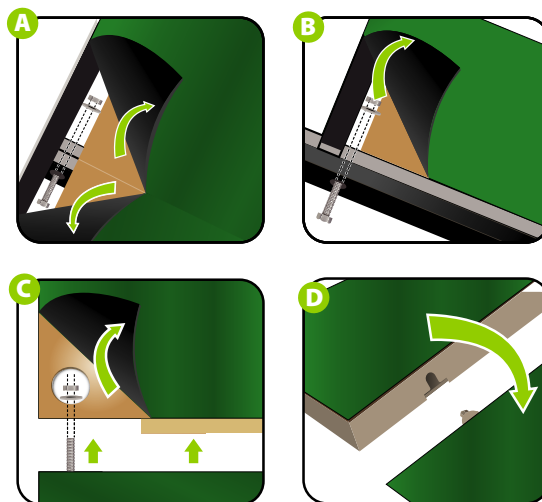
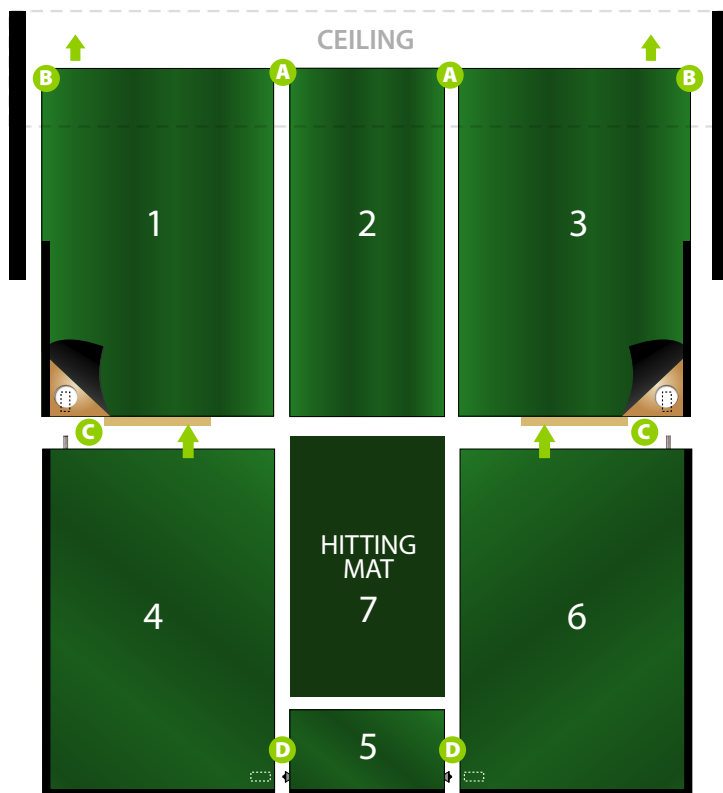


END OF STRUCTURE
ASSEMBLY SECTION

1

Install the floor sections in order (1 to 7).

A and **B** you will need bolts washers and nuts. **C** you will need washers and nuts.



2

Step 1

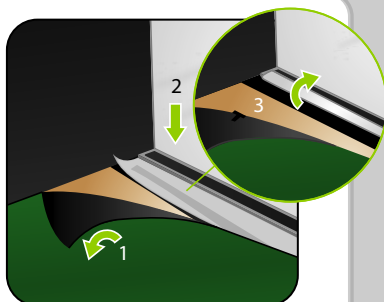
Lift green carpet.

Step 2

Stretch the white screen behind and under the aluminum bar and reach for it through the space.

Step 3

Stick it on the aluminum bar velcro.



4



3

Step 1

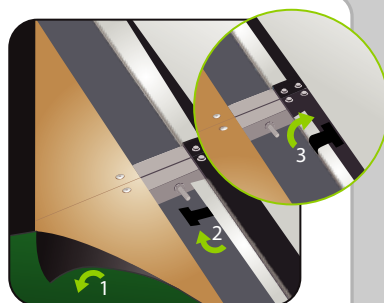
Lift green carpet.

Step 2

Stretch the black netting behind and under the aluminum bar and attach it on the remaining half of the aluminum bar using the T shaped Velcro.

Step 3

Stick it on the remaining half of the aluminum bar velcro.



END OF FLOOR INSTALLATION SECTION

1

HALF-WALL INSTALLATION

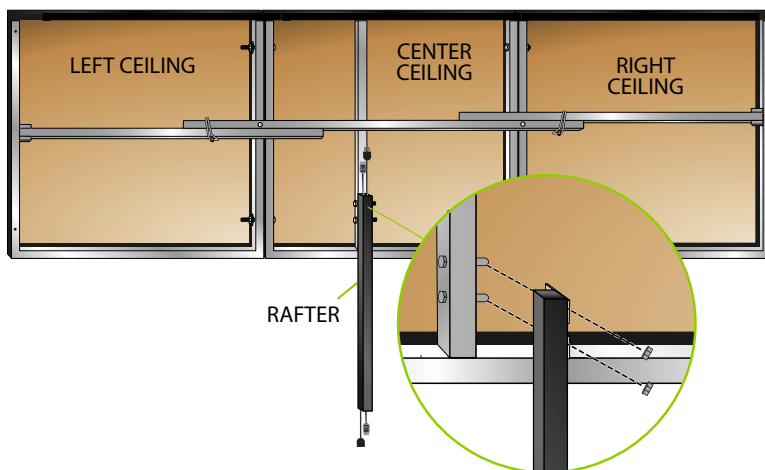
Attach the half-wall panels to the structure with washers and nuts.



2

RAFTER INSTALLATION

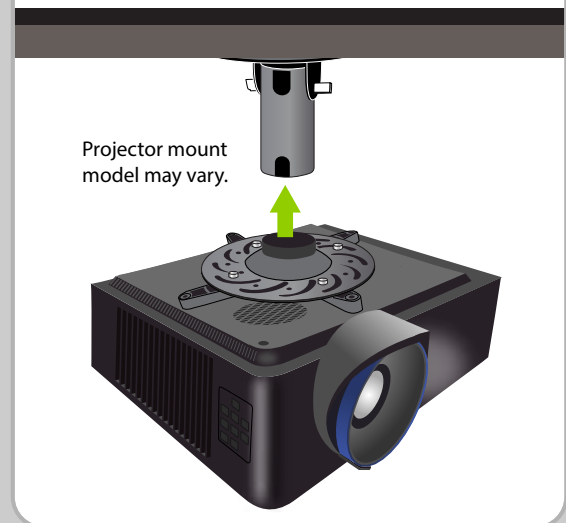
Attach the rafter to the ceiling structure with washers and nuts.



3

PROJECTOR INSTALLATION

Attach the projector on the projector mount. Refer to the instruction sheet inside the projector box.



END OF OPTIONAL INSTALLATION SECTION